

*Trauma Informed Oregon*

# Trauma Informed Care



Fall 2022

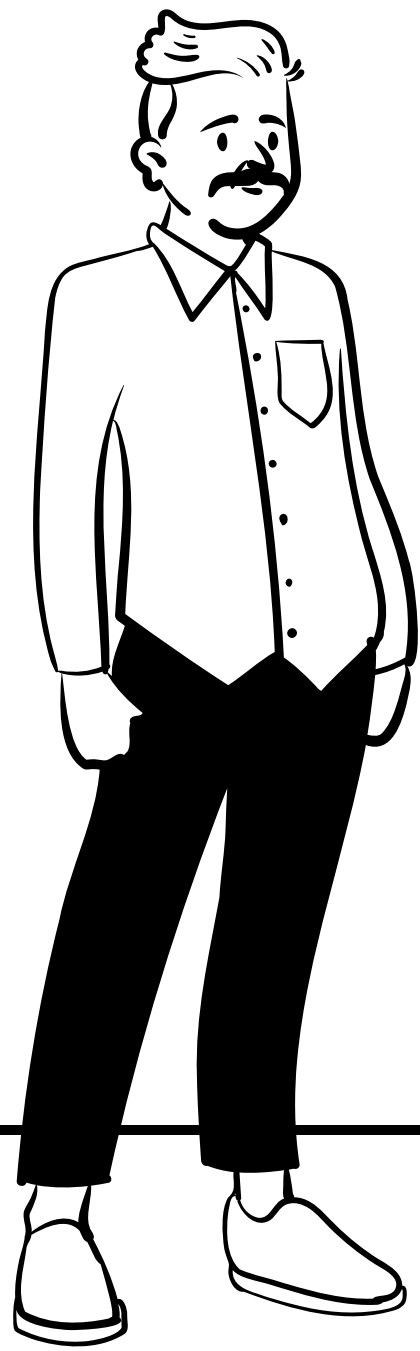
# What is TIC and why is everyone talking about it?



# Trauma Informed Care

"Trauma Informed Care is a **strengths based framework** that is grounded in an understanding of and responsiveness to the impact of trauma, that emphasizes physical, psychological, an emotional safety for both providers and survivors, and that creates opportunities for survivors to rebuild a sense of control and empowerment."

*Hopper, Bassuk, & Olivet, 2010*



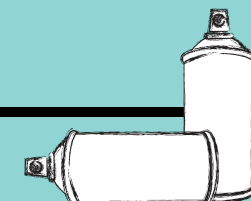
# For Rs of Trauma Informed Care

*Recognizes the signs and symptoms of trauma in others*

*Realizes the widespread impact of trauma and understand the potential paths for recovery*

*Responds by fully integrating knowledge about trauma into policies, procedures and practices*

*Actively resists re-traumatization*



# What is the difference between TIC and Trauma Specific Services



# TIC v/s TSS

## *Trauma Informed Care*

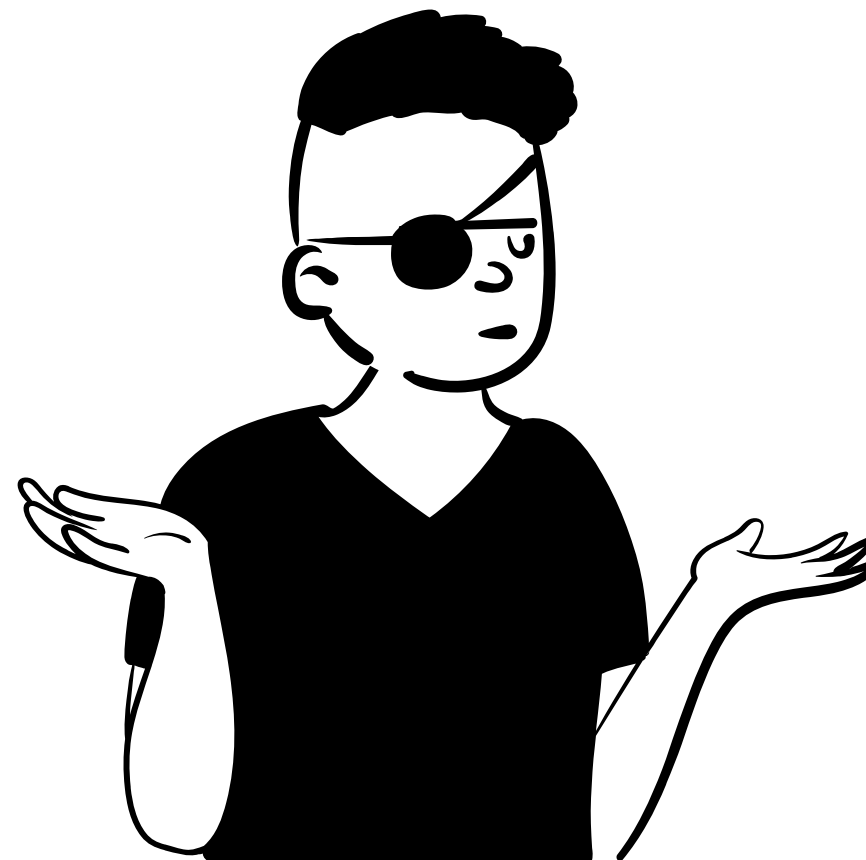
Approach, based on the knowledge of trauma, aimed at ensuring environments and services are safe, empowering and healing for both service users and the staff that provides them

- Guide policy, practice, procedure
- Corrective emotional experiences
- Focus on workforce wellness
- About organizational culture

## *Trauma Specific Services*

Program, intervention or therapeutic services aimed at treating the symptoms or conditions resulting from trauma

- Focused on symptoms
- Promotes healing
- Teaches skills
- Psychological empowerment, mind-body connection, other modalities



# What does TIC looks like?

## *With whom?*

Schools (prek to post grad)

Hospitals & health services

Health visitors

Park Rangers

Law enforcement

Libraries

Summer counselors

Government agencies

## *Doing what?*

- Foundational learning and capacity building
- Establishing accountability
- Workforce wellness
- Reviewing HR procedures
- Architecture / physical design of spaces
- Reviewing policies and procedures
- Recruiting and retaining diverse staff
- Investment priorities

*Trauma Informed Oregon*

# Trauma Informed Care



Fall 2022