



# Workforce challenges in providing services for older adults and people with disabilities

---

**Nakeshia Knight-Coyle, Director**

ODHS Office of Aging and People with Disabilities

September 22, 2022

# Overview

---

**Long-term care providers, and the direct-care workforce, are essential in providing services to older adults and people with disabilities.**

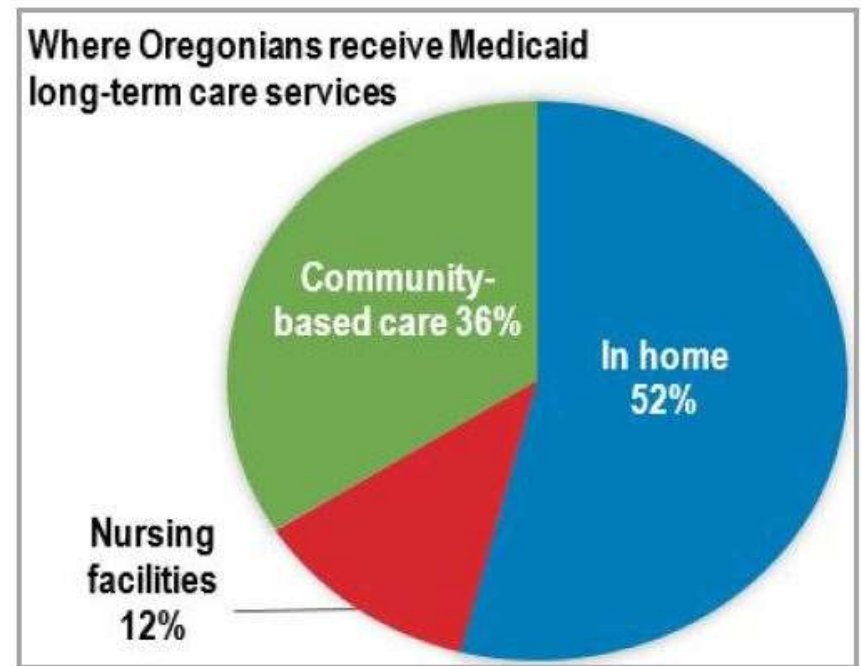
Roughly 44,500 people, including Medicaid recipients and those who are private pay, reside in APD-licensed settings. Oregon currently licenses about:

- 130 nursing facilities;
- 560 assisted living and residential care facilities; and
- 1,400 adult foster homes.

## Overview continued

### Of the consumers receiving Medicaid long-term services and supports:

- About 19,000 receive services in their homes;
- 12,000 in community-based care settings such as assisted living; and
- 4,000 in nursing facilities.



# Meet the workforce

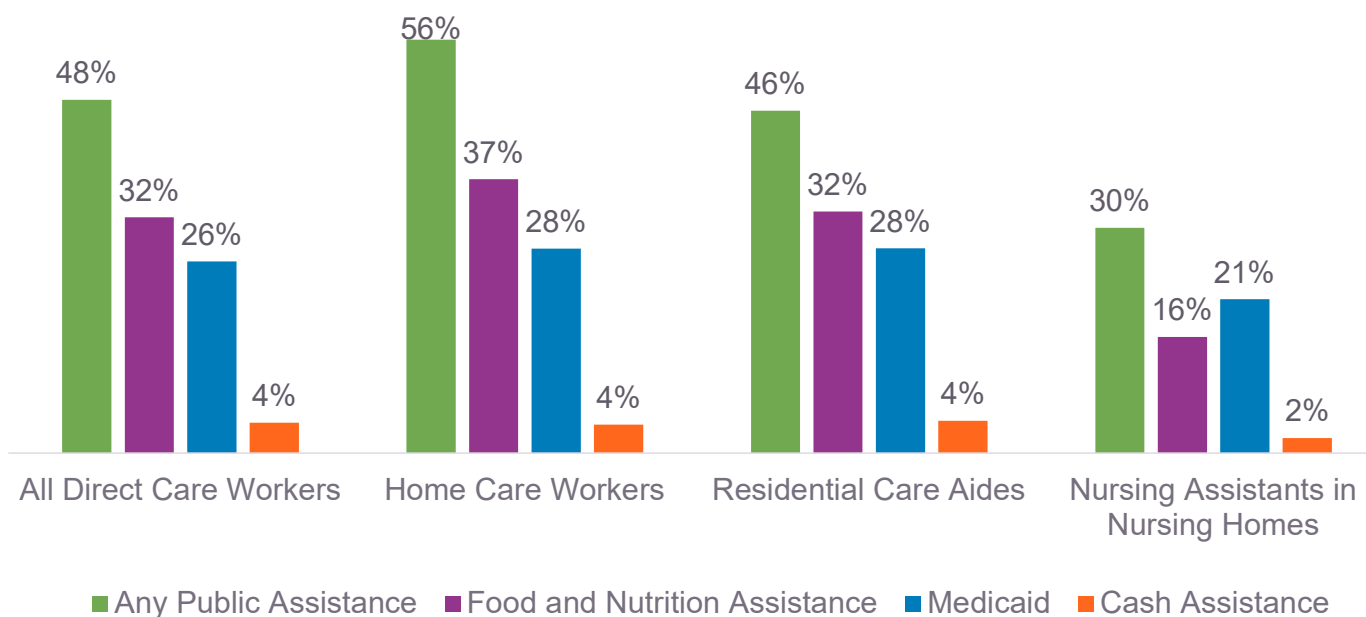
---

- Nearly one in four direct-care workers in Oregon are **age 55+**.
- 81% of Oregon's direct-care workers are **women**.
- One in three direct-care workers in Oregon are **people of color**.

Source: Ruggles, Steven, Sarah Flood, Ronald Goeken, Megan Schouweiler, and Matthew Sobek. 2022. *IPUMS USA: Version 12.0*. <https://doi.org/10.18128/D010.V12.0>; analysis by PHI (September 2022).

# Meet the workforce continued

Nearly half of Oregon's direct-care workers rely on public assistance.



Source: Ruggles, Steven, Sarah Flood, Ronald Goeken, Megan Schouweiler, and Matthew Sobek. 2022. *IPUMS USA: Version 12.0*. <https://doi.org/10.18128/D010.V12.0>; analysis by PHI (September 2022).

# How the pandemic affected care providers

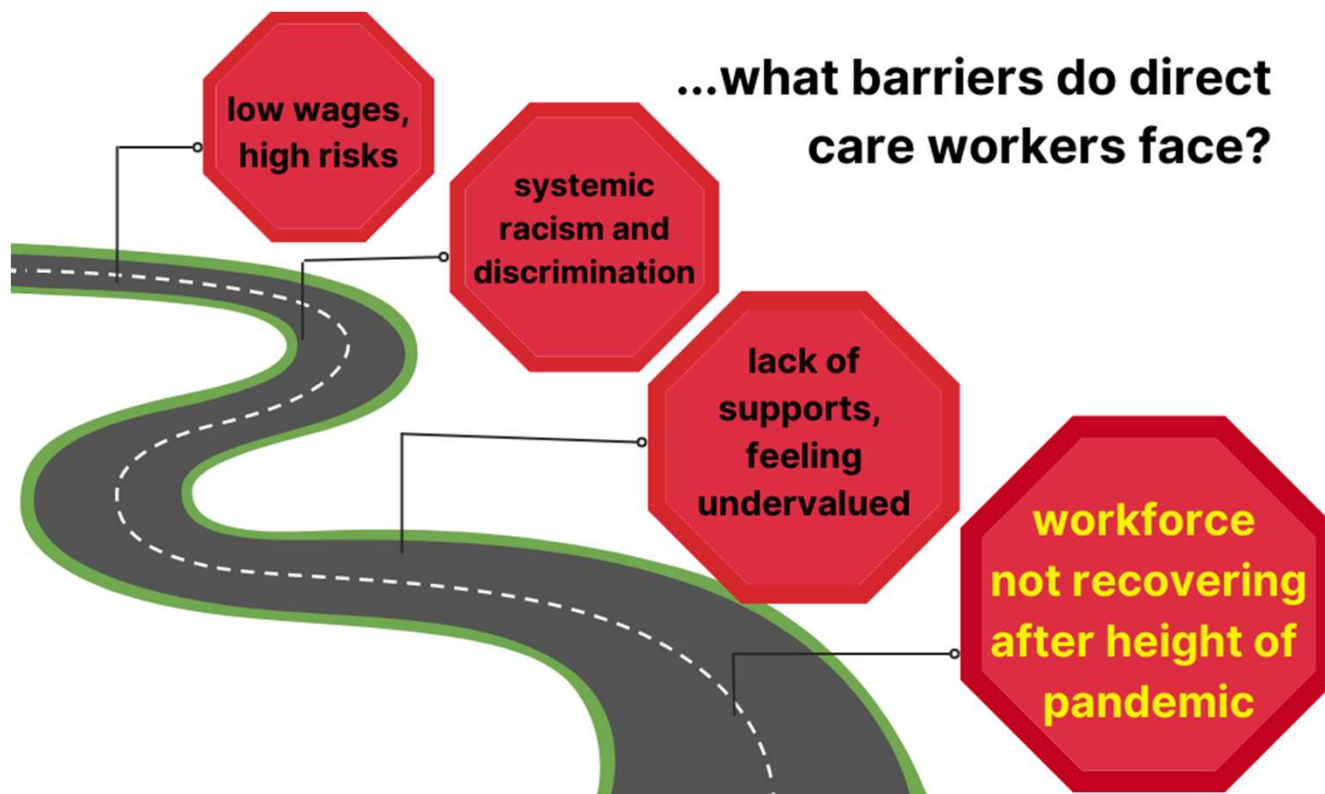
---

- The COVID-19 pandemic **exacerbated gaps in the continuum of care** in Oregon and contributed to ongoing **capacity issues** in health care and long-term care facilities.
- **Workforce shortages** and **inadequate provider reimbursement rates** are contributing to these gaps.
- Emergency Board funding, if approved, will offer a short-term fix, but systemic issues will still need to be addressed through **longer-term solutions**.



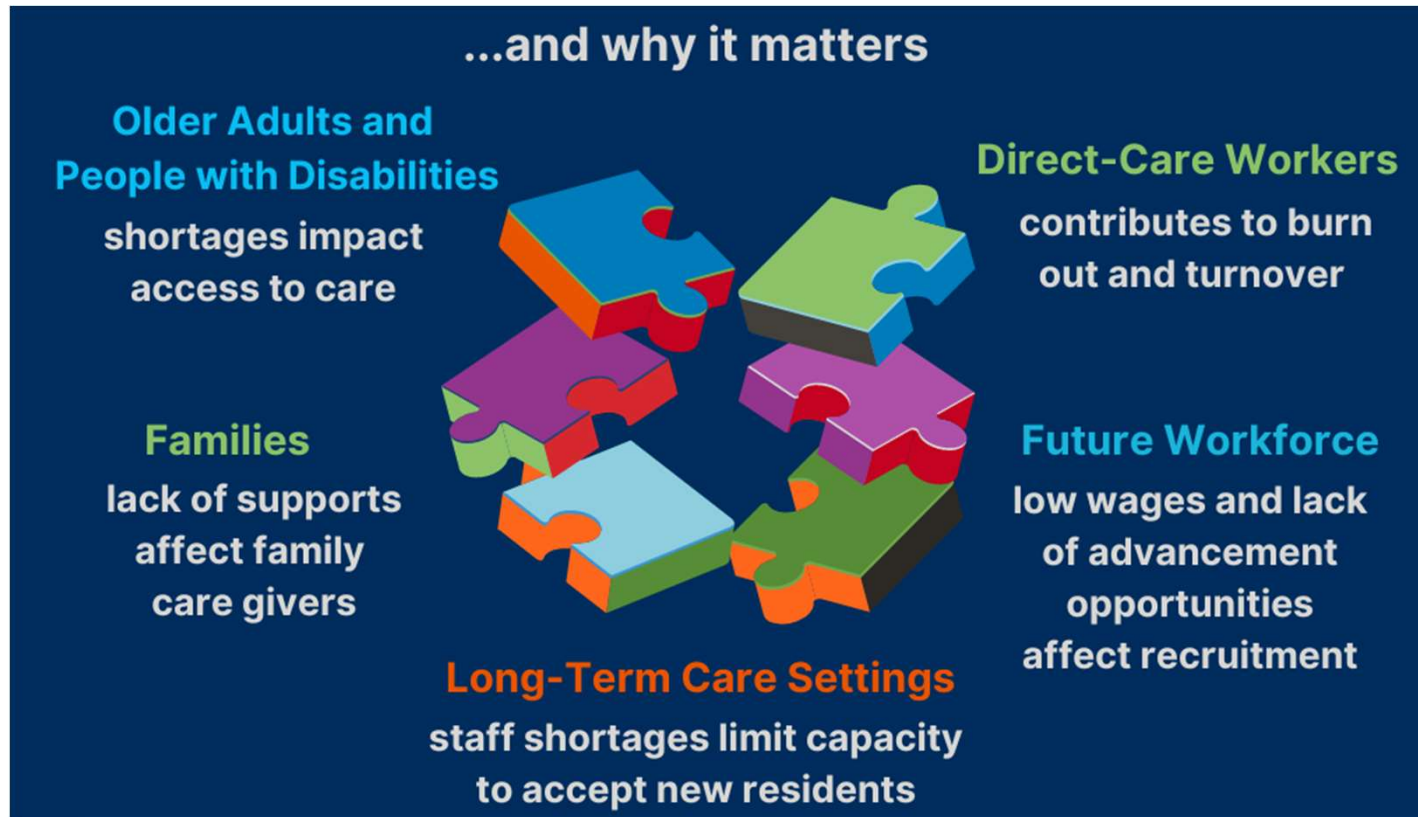
# Workforce issues

---





# Who is affected





# Supporting people through multiple channels

---



# Milestones and future goals

