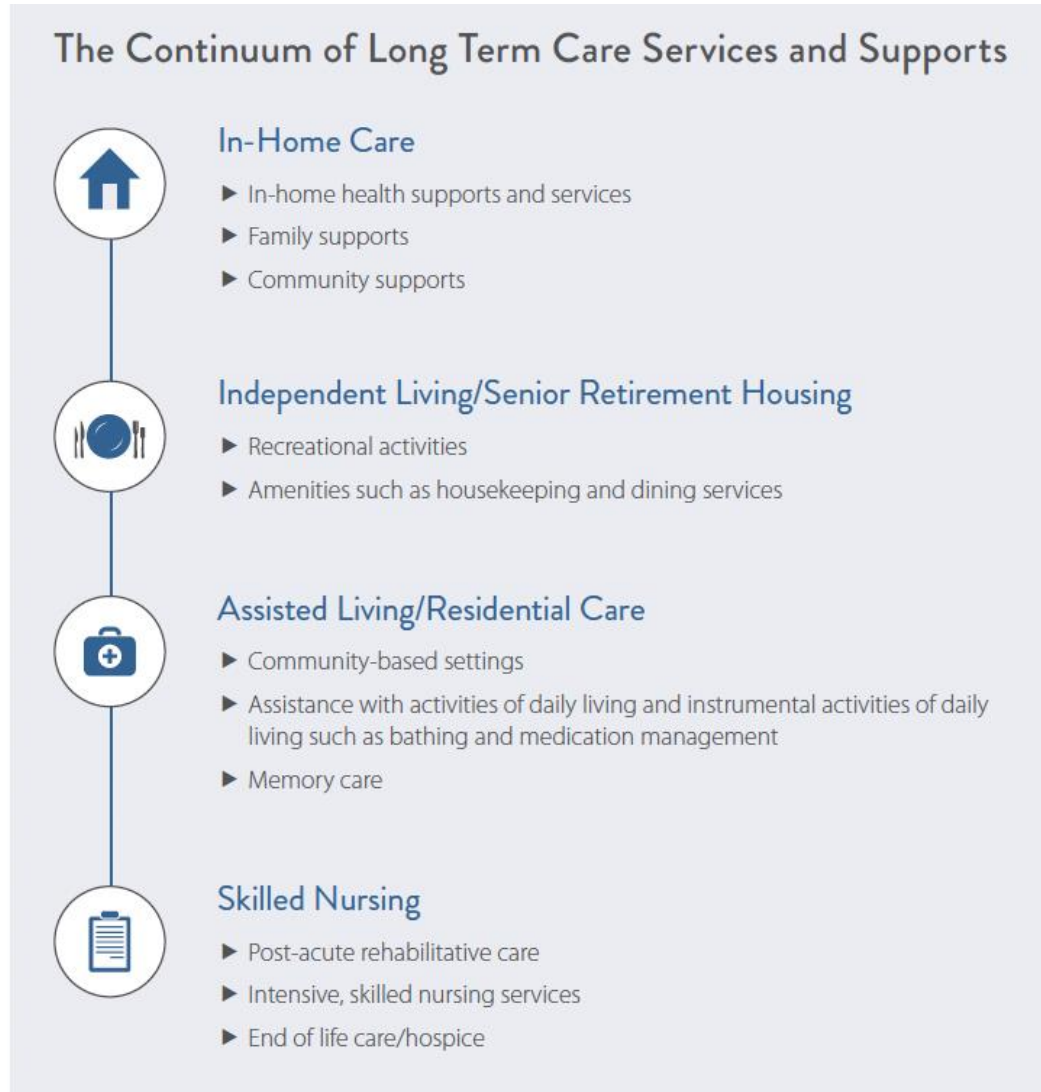


The Continuum of Long Term Care

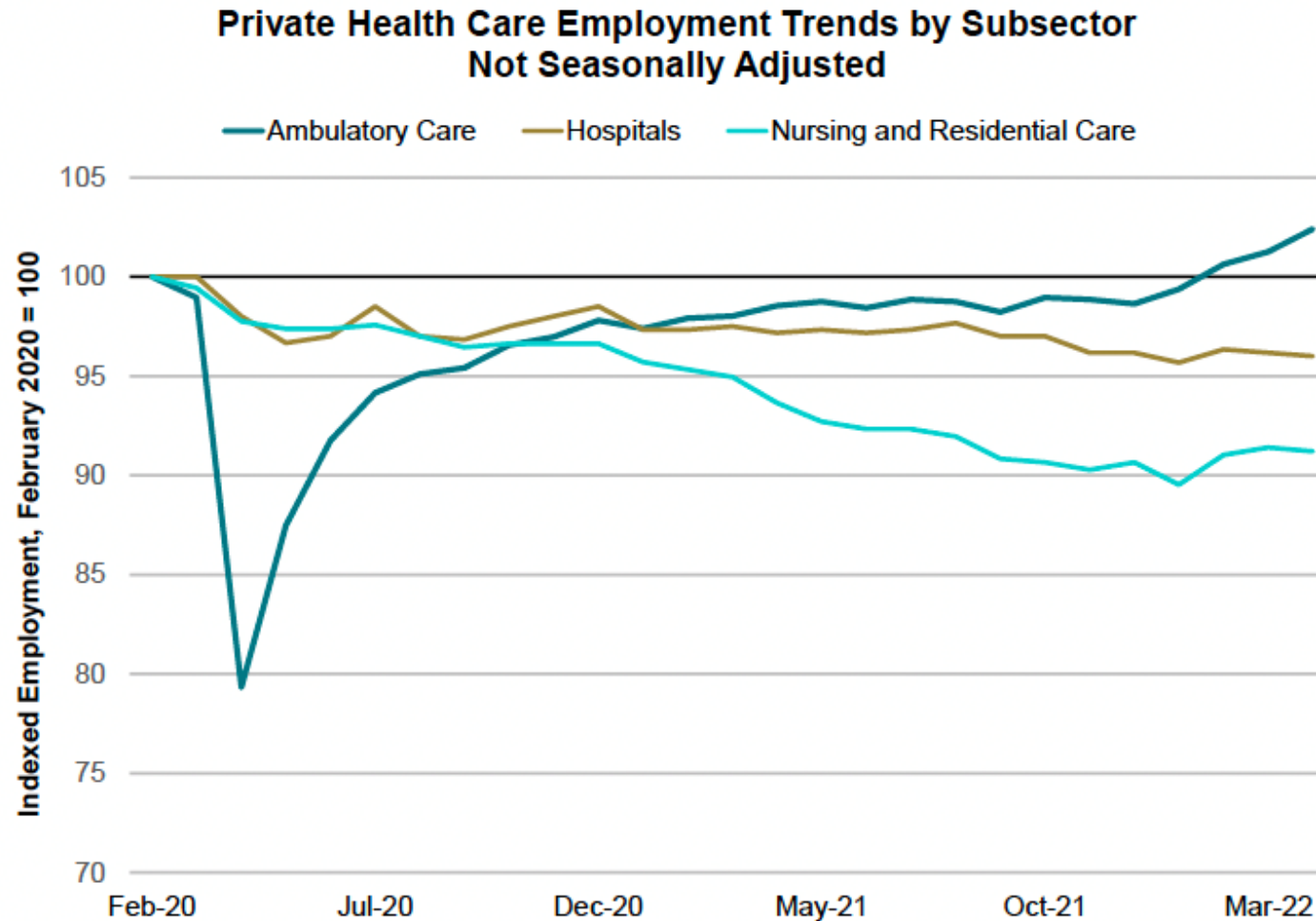


Long Term Care Providers & Oregonians Served

PROVIDER TYPE	NUMBER OF SERVICE PROVIDERS	OREGONIANS SERVED (IN 2021)
Adult Foster Homes ¹⁹	1,354	5,180
Nursing Facilities ²⁰	131	6,758
Assisted Living/Residential Care ²¹	336	15,146
Memory Care ²²	224	6,023
Independent Living	200	12,000+
In-Home Care Agencies ²³	186	9,300+
Home Care Commission Workers ²⁴	17,000+	20,000+
TOTAL	19,441+	74,407+

Workforce Challenges – Deeper & More Sustained in LTC

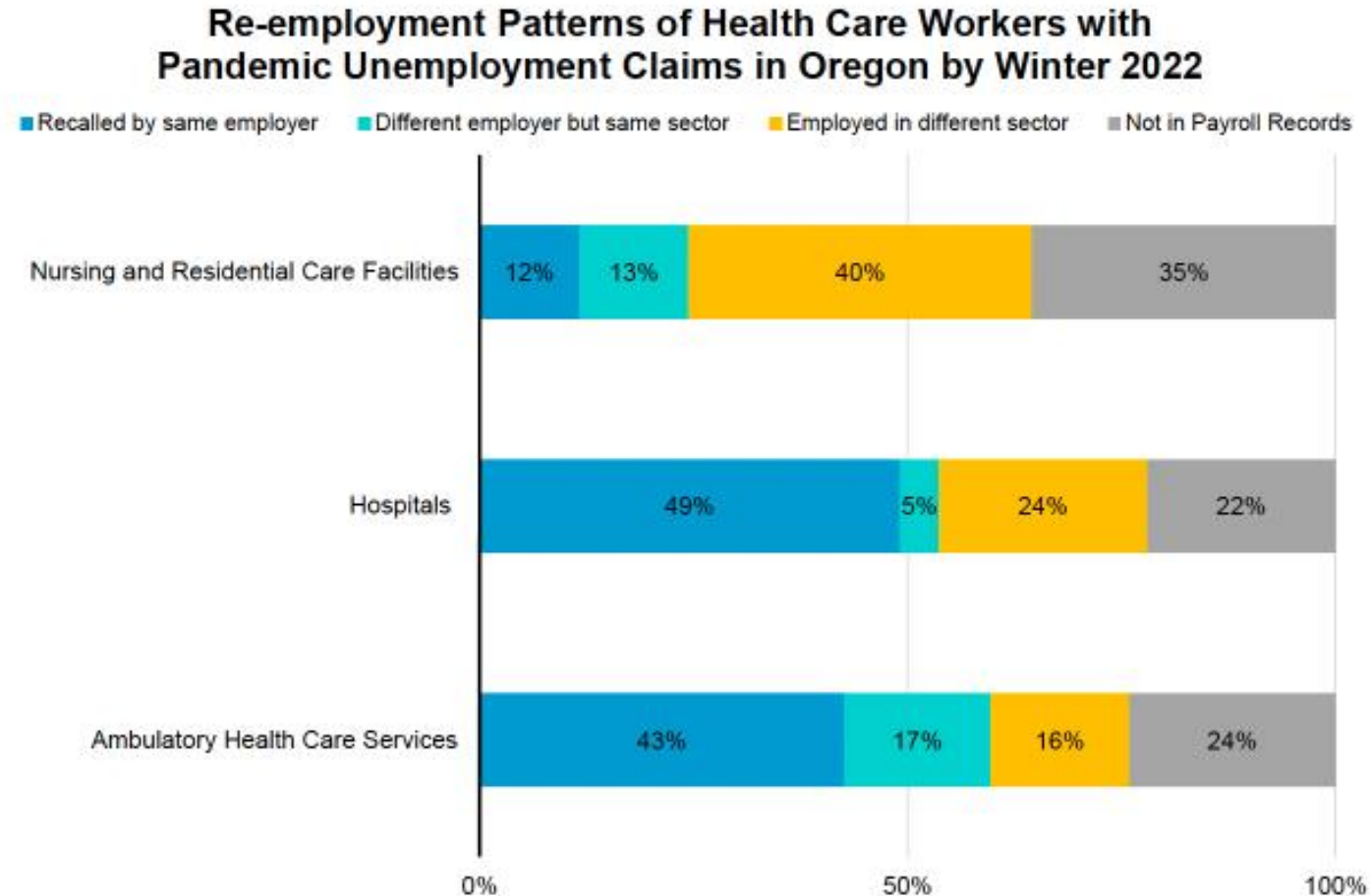
Employment Trends Varied Within Health Care



Source: Oregon Employment Department, Current Employment Statistics

Workforce Challenges – Deeper & More Sustained in LTC

Re-Employment Patterns Varied Within Health Care



Source: Oregon Employment Department, Unemployment Insurance Records