



Senate Natural Resources and Wildfire Recovery Committee

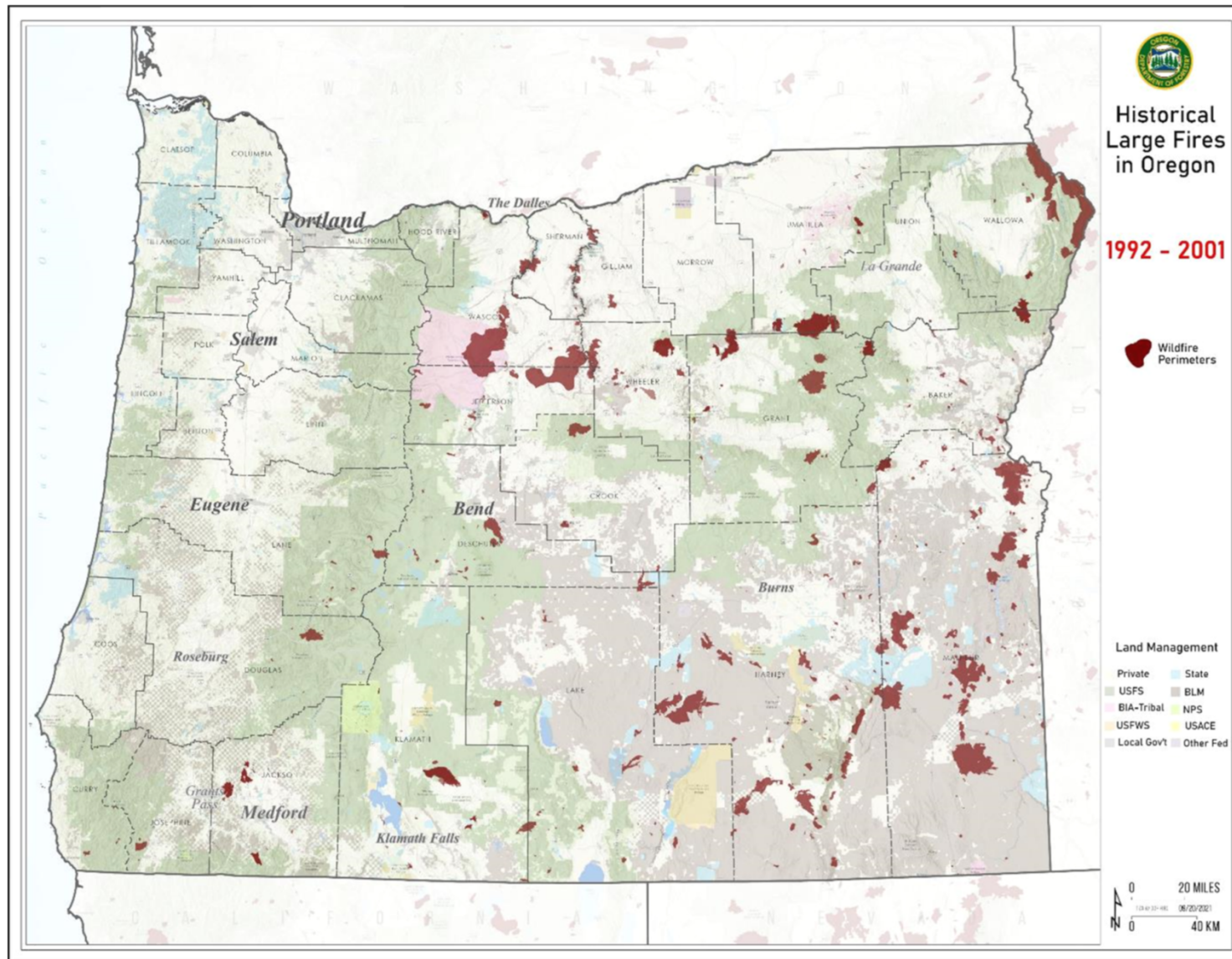
September 22, 2022

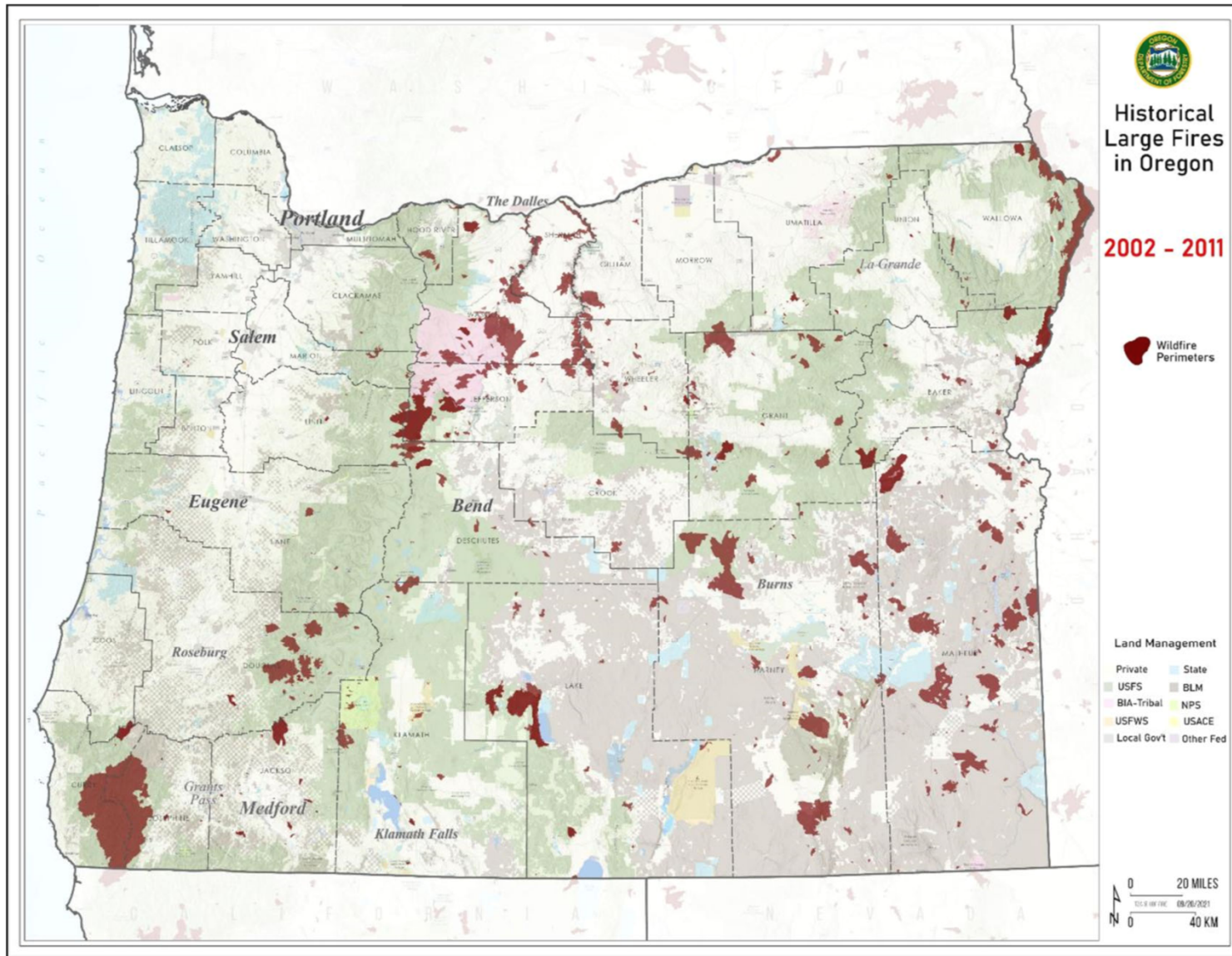
“Implementation of Oregon’s Wildfire Programs”

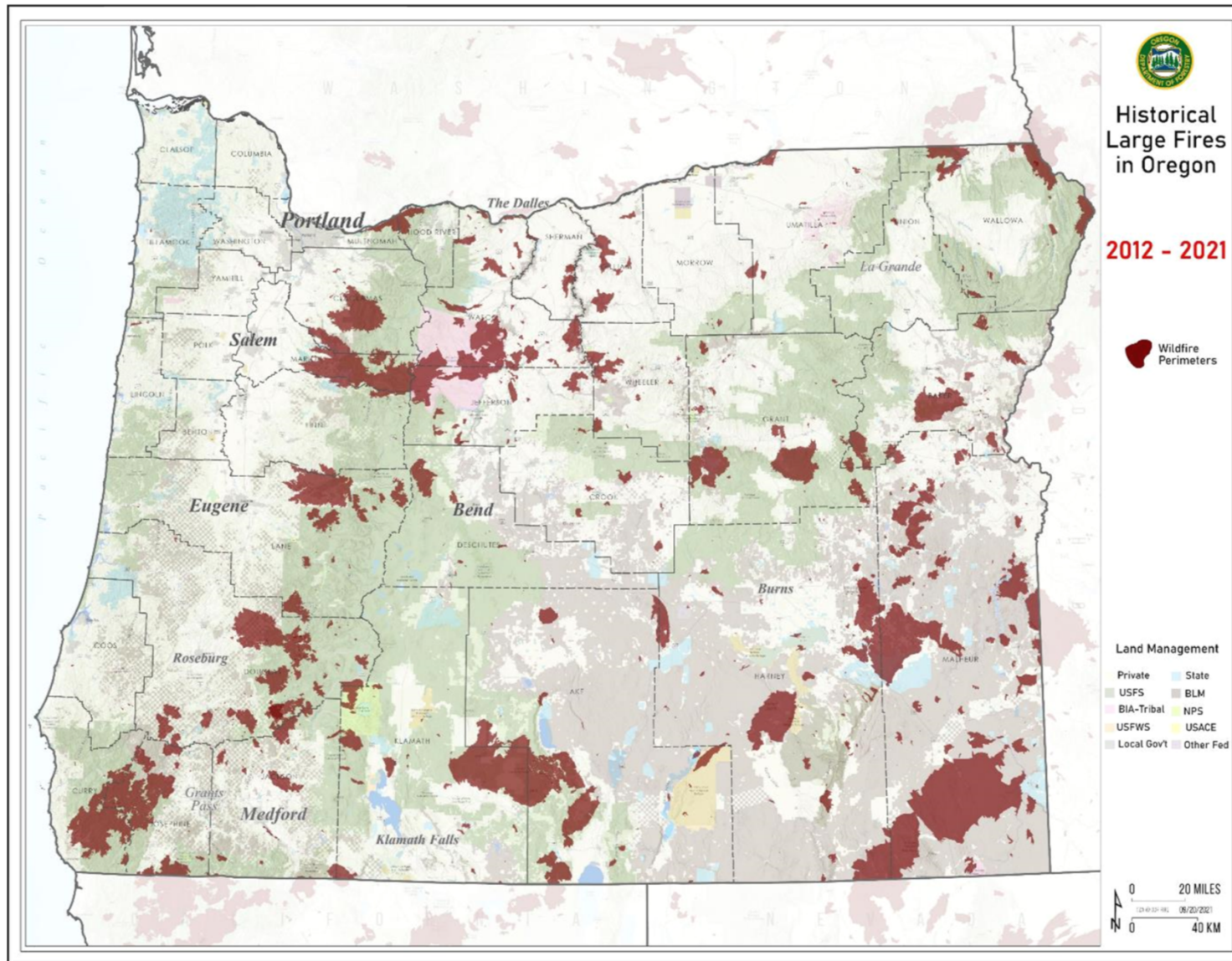
Doug Grafe, Wildfire Programs Director

Mark Bennett, Wildfire Programs Advisory Council Chair





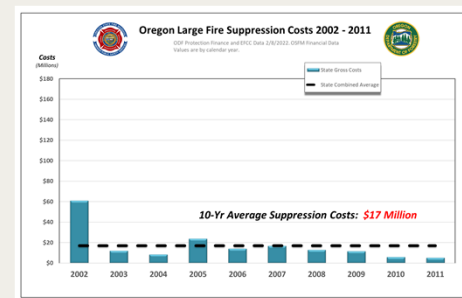




The True Cost of Wildfire

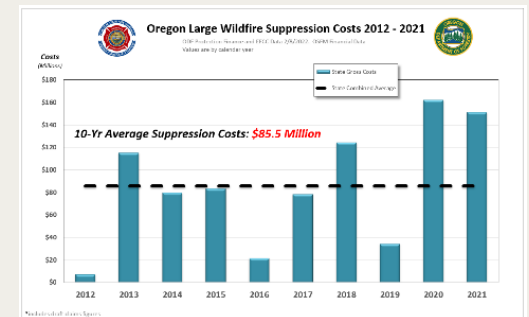
- Significant social, economic, and environmental implications:
 - Losses: Infrastructure, Cultural Resources, Tourism, Smoke and Health Impacts, Transportation & Power Interruptions, Watersheds, Wildlife Habitat, Timber, Agriculture, Recreation,
 - Recovery: Following the 2020 Labor Day Fires: Oregon Legislature passes HB 5006 - \$480 million
- Studies showing over 10X the costs of suppression
 - Headwater Economics: Suppression at 9% of total
 - Western Forestry Leadership Coalition: 2-30X
 - National Institute of Standards & Technology: 2-50X

Suppression Costs increase - 5x



\$17 Million Avg.
2002-2011

\$85 Million Avg.
2012-2021

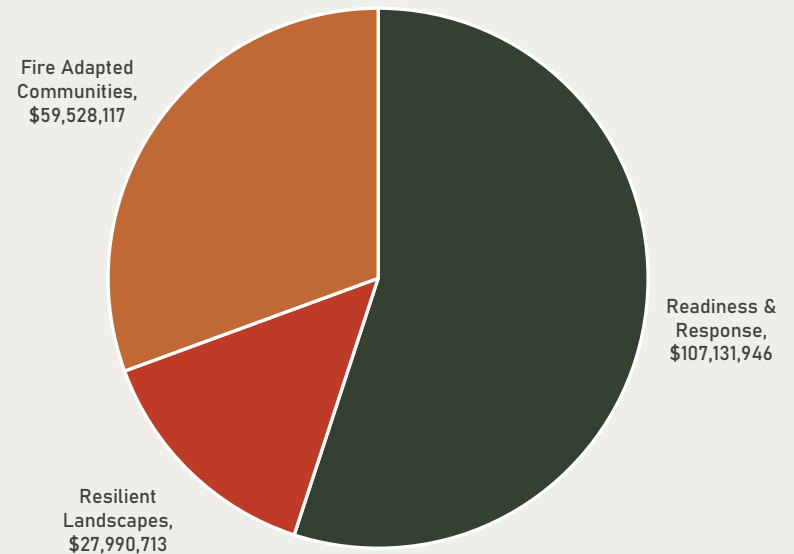





Oregon Takes Action

- 2019: Governor's Council on Wildfire Response
 - Over 100 Volunteers produce 37 recommendations
 - Anchored in the National Cohesive Wildfire Strategy:
 - Adequate Response
 - Resilient Landscapes
 - Fire Adapted Communities
- 2021: Oregon Legislature passes Senate Bill 762
 - \$195 million investment
 - Creates the Wildfire Programs Director and Advisory Council
 - 1st Council Report due October

SB 762 Investment Distribution (\$195 Million)
National Cohesive Wildfire Strategy - Tenants





Electric System Advancements

(Section 1-6)

- Public Utility Commission
Wildfire Workshops
- Utility Wildfire Protection Plans
 - 3, Investor-Owned Plans
 - 30, Consumer Owned Plans
- Shared Intelligence:
 - Wildfire Detection Cameras
 - Weather and Fire Modeling Analytics
- **Public Safety Power Shut-off**
 - Critical & Effective Wildfire Prevention Strategy



2022 Labor Day Wildfire Event: September 9-10
25-30 MPH Sustained – Gusts 60MPH – 36 Hour Event

“Wildfire Crisis Averted – through Prevention (PSPS)”

Cedar Creek Fire grows 60,000 acres over 36-hour wind event and forces
evacuation of Oakridge: over 3000 residence

Landscape Resiliency

(Section 18, 24, 25)

- Treatments Mitigate **Catastrophic** Wildfire Risk
- Provides for Fire Fighter Safety & Community Safety
- Restores Ecological Function
- Requires:
 - Sustained Funding and continued Maintenance
 - Prescribed Burning (HB 2571)
 - Cross-boundary Collaboration
- \$20 Million Landscape Scale:
 - 19 projects across 150,000 acres – 2x applicants
- \$5 Million Small woodlands:
 - 20 community projects – 80 applicants



“Landowner fuel treatment that burned during a wildfire in 2021. The treatment prevented the fire from reaching the canopy, protected trees and helped firefighters directly engage the fire front.”

Public Health

(Section 13 -15)

- Community Response Plans

\$1.5 million: 21 Communities, Tribes, Counties and Collaboratives granted to develop smoke programs

- Public Clean Air Spaces

463 air scrubbers being distributed for public clean air spaces

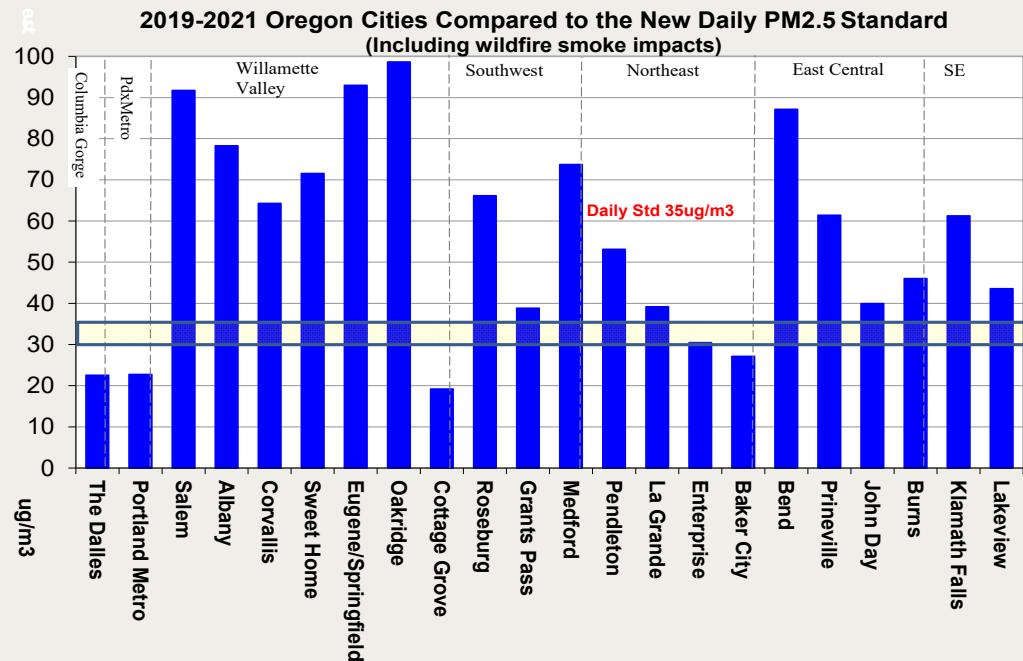
\$4 Million in grants this winter to create public clean air spaces

- Residential Air Filtration Systems

\$5 Million to purchase 5000 units for installation across Oregon

Target – Medicaid recipients with smoke vulnerabilities

- Comprehensive Approach



Oregon **Exceeds** National Air Quality Standards
With Catastrophic Wildfire Smoke Accounted For

“This is our new reality, and we must protect public health”

Our 10-year average annual acres burned is 720,000

We are adapting to “living with fire and wildfire smoke”, but we can not accept the **catastrophic** outcomes from wildfire



Oregon Conservation Corps

(Section 21-23)

- Engaging with youth programs to reduce wildfire fuels
- Supporting at-risk communities
- Establishing Defensible Space to Safely Deploy Fire Engines to Protect Homes During Wildfire.
- \$9 million deployed across thirteen projects
 - Seeking \$1 million in matching dollars
- Over 400 youth engaged



Testimonials:

Jae McDonald 8/25/2022: "I'm so grateful for the work they performed. I was so overwhelmed with doing it myself. Thanks to the crew as well!"

Keiran Hadley 4/12/2022: "The experiences that I have had during my time as a 'Community Wildfire Protection Corps' Crew Supervisor and Program Coordinator at Northwest Youth Corps have been the most important and foundational ones that I have had yet."



Wildfire Risk Mapping

(Section 18, 24, 25)

- To identify our communities most at risk from catastrophic wildfire
- Directs resources to protect Oregonians
 - Defensible Space
 - Hardening of Homes
- \$25 Million Community Risk Reduction Fund
 - Administered by Oregon State Fire Marshal
- Federal: Community Wildfire Defense Grant Program
 - Up to \$10 Million per project

October
To
February

- ODF transfers all information learned from public engagement to OSU
- OSU to review mapping lessons learned and update map, including new models
- BCD & OSFM complete code development language
- All: Build Community Engagement & Education Strategy with Community Leadership

March
To
September

- ODF/OSU: Delivers Draft Map Publicly
- All: Implement Community Engagement & Education Strategy with Communities and the Public.
- OSU: Make any map adjustments identified from the 4 months of public engagement.
- ODF: Focus on wildfire during fire season

October
To
December

- ODF/OSU: Delivers a Final Map - October 1
- ODF: Sends out notifications and administers 60-day Appeals Process
- All: Complete Process by 2023



Advancing Wildfire Programs in Oregon

“Living with Fire – 720,000 acres” – Must Reduce the **Catastrophic** Nature of Fire

- Prevention – Reduce Human Caused Fires
- Reduce Fire Behavior Through Landscape Resiliency – Restoring Forest and Range Health
 - Increased Prescribed Fire
- Home and Community Defense Measures
 - Defensible Space, Home Hardening, Land use considerations
- Protecting Public Health
- Adequate Response

Minimize Suppression and Recovery Costs and Losses: Infrastructure, Community, Cultural Resources, Tourism, Health Impacts, Transportation & Power Grid Damages, Watersheds, Wildlife Habitat, Timber, Agriculture, Recreation, Economy

Federal Bi-partisan Infrastructure Investments & Jobs Act

- Increased (All Lands) Landscape Resiliency – Collaborative Forest Restoration Grants: \$11.7 Million
- Increased Federal land Resiliency – across all federal lands
- Community Wildfire Defense Grant Program: \$10 Million max per grant, \$200 Million/Year for Five Years Nationally
- Electrical Grid Resiliency and Reliability: \$50 Million to Oregon
- Wildland Fire Mitigation & Management Commission: Guides Future Dollars – Three Oregon Members

Public **Private** Partnerships

- Philanthropy



Thank you

Mark Bennett, Wildfire Programs Advisory Council Chair:

[Governor of Oregon : Wildfire Programs Advisory Council : Policies : State of Oregon](#)

Doug Grafe, Wildfire Programs Director

Office of Governor Kate Brown

doug.c.grafe@oregon.gov

Cell: (503) 689 2040

