



Education Subcommittee
Joint Emergency Board

Ben Tate, OLDC Director

*An overview of the Oregon
Longitudinal Data
Collaborative program*

September 21st, 2022

Oregon Longitudinal Data Collaborative. Who we are



The **Oregon Longitudinal Data Collaborative (OLDC)** is an inter-agency program located in the Higher Education Coordinating Commission.

The program conducts cross-sector research *examining the impact of education programs, policies, and investments* to help individuals and communities in Oregon thrive.

The **Statewide Longitudinal Data System (SLDS)** is the data system that *matches administrative data collected* by state agencies in order to provide cross-sector, longitudinal data that can be used in research and reporting.



OLDC. Our history

Pre-2015 History

- The SLDS as a concept was discussed in state government as early as 2009.
- It was included in the initial statute that created the Oregon Education Investment Board in 2011.
- Review of pre-2015 documents shows many different concepts were presented and discussed but no definitive plan developed.

2015

Senate Bill 215 directs the Chief Education Office to develop an integrated, statewide data system that contains student-level outcomes from all public educational institutions

2016

The Legislature approves funding for the IT Project

2018

IT Project completes in June; transition from project to program begins

2019

Transition reveals significant limitations in design and student coverage that prevent initial goals from being realized

Key issues identified include:

- Existing project governance structure insufficient for partner agencies' oversight
- Data in system was matched but tracked only some students' outcomes
- Data presentation system was very narrow and not adaptable

OLDC. Recent history, data and design limitations overcome

2020

External contractor **brought in and confirmed limitations**

Solution: Limited team overcame data limitations & increased flexibility (see 'Four Foundational Changes' on the right). Progress steady but slow due to small team size (pandemic budget crisis meant only 3 of 9 positions filled).

2021

Program **positions reduced** from 9 to 6 FTE

Incorporated new data from Teacher Standards and Practices Commission
Developed matched datasets for partner agency reports:

- ODE and TSPC for Educator Preparation Programs
- ODE, HECC and OED for federal reporting on K-12 CTE programs

2022

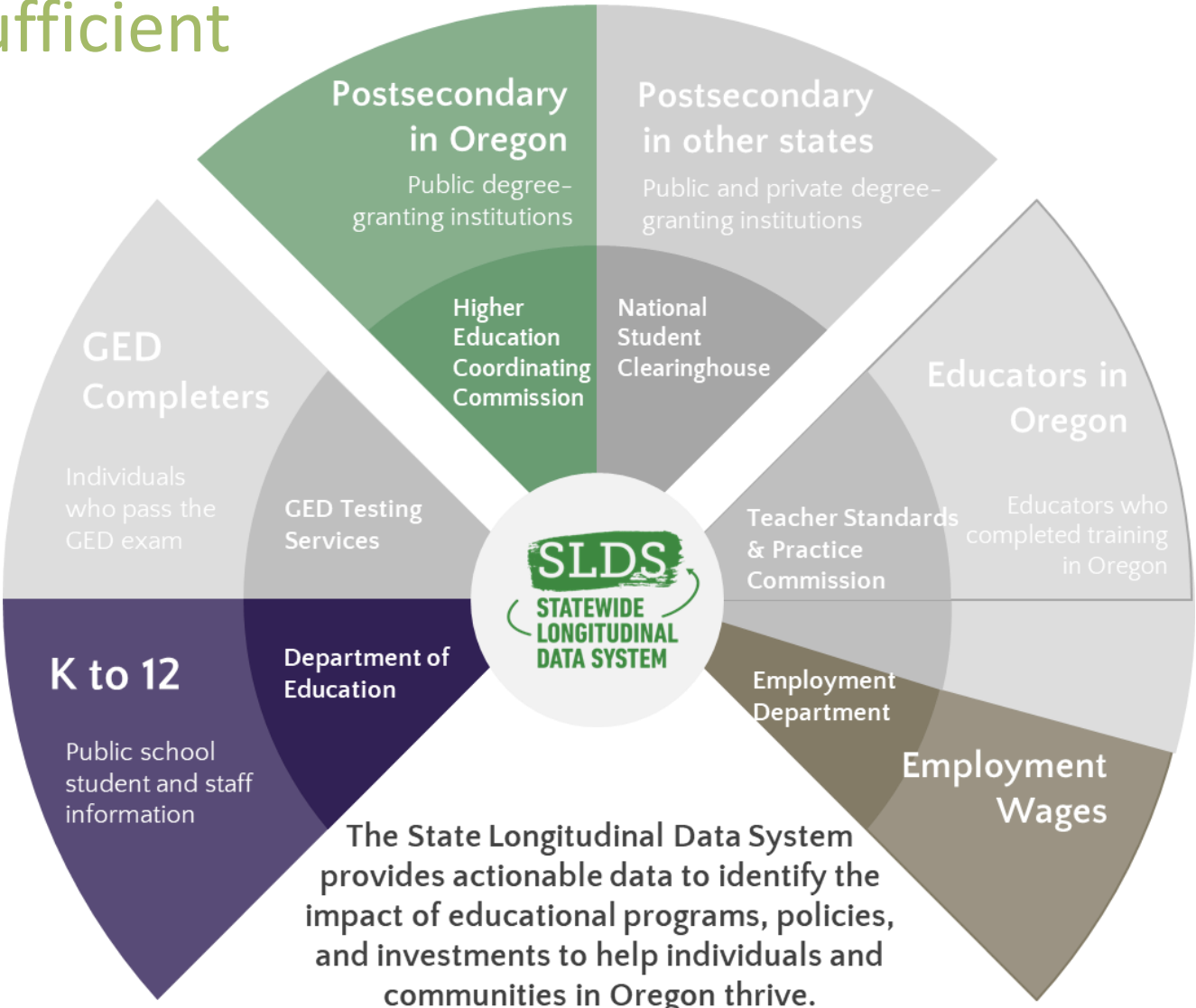
Current Status: **All 6 positions filled** and managing a portfolio of products

- Data provided for postsecondary Equity Briefs
- Data provided for ODE SB744 Report on postsecondary outcomes
- Data provided for ODE research study on 9th grade on track indicator
- 3 public reports: Education Pathway, SLDS Overview, Healthcare Shortage Study

Four foundational changes stabilized the data and design for use

- ✓ Establishment of robust, cross-agency governance structure
- ✓ Complete picture of all Oregon students by adding necessary data sources
- ✓ Expanded ability to match between sources
- ✓ Updated design to allow flexible access to matched data by research staff

OLDC. Initial data and data partners limited and insufficient



Initial Partnerships

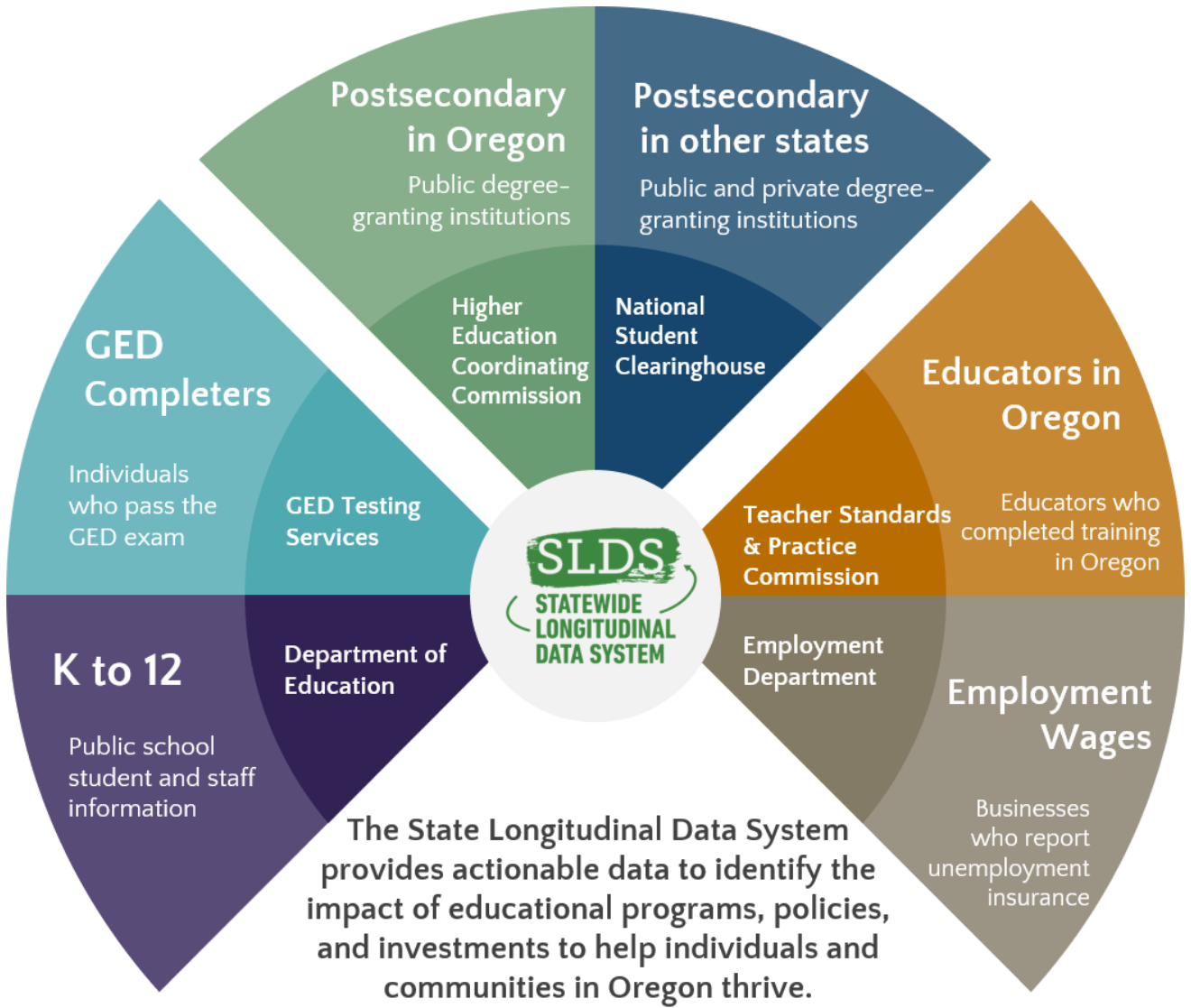
ODE
K-12 student and staff data collections

HECC
Community colleges and public universities

OED
Wages, matching only 10-15%



OLDC. *Current data and data partners*



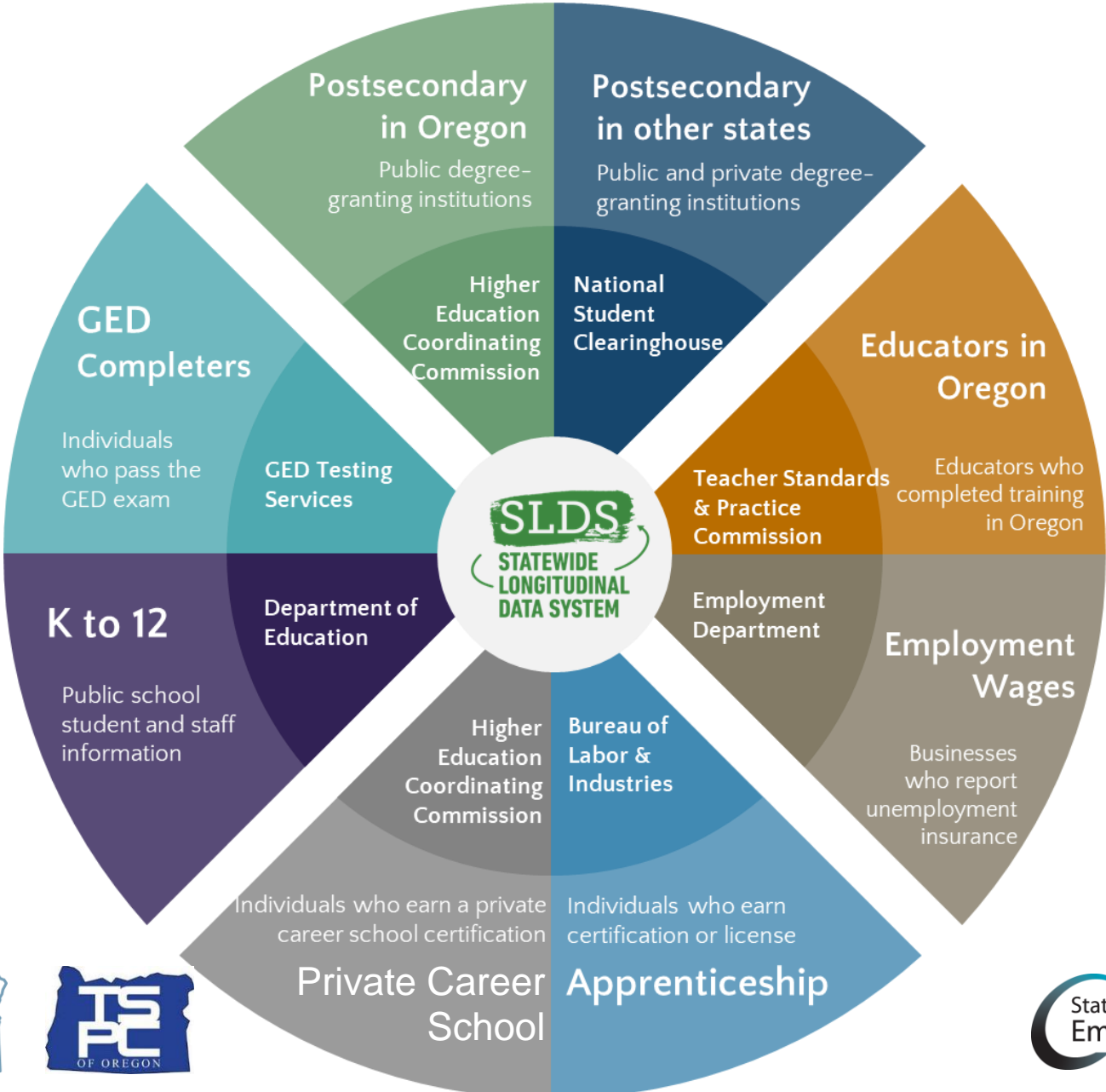
The State Longitudinal Data System provides actionable data to identify the impact of educational programs, policies, and investments to help individuals and communities in Oregon thrive.

Current Partnerships

- ODE
K-12 student and staff data collections
- HECC
Community colleges and public universities
- OED
Wages, now matching 70-75%
- GED
GED Completers
- NSC
National enrollment and degree data
- TSPC
Teacher Licensure Recommendation



OLDC. *Future data and data partners*



Future Partnerships

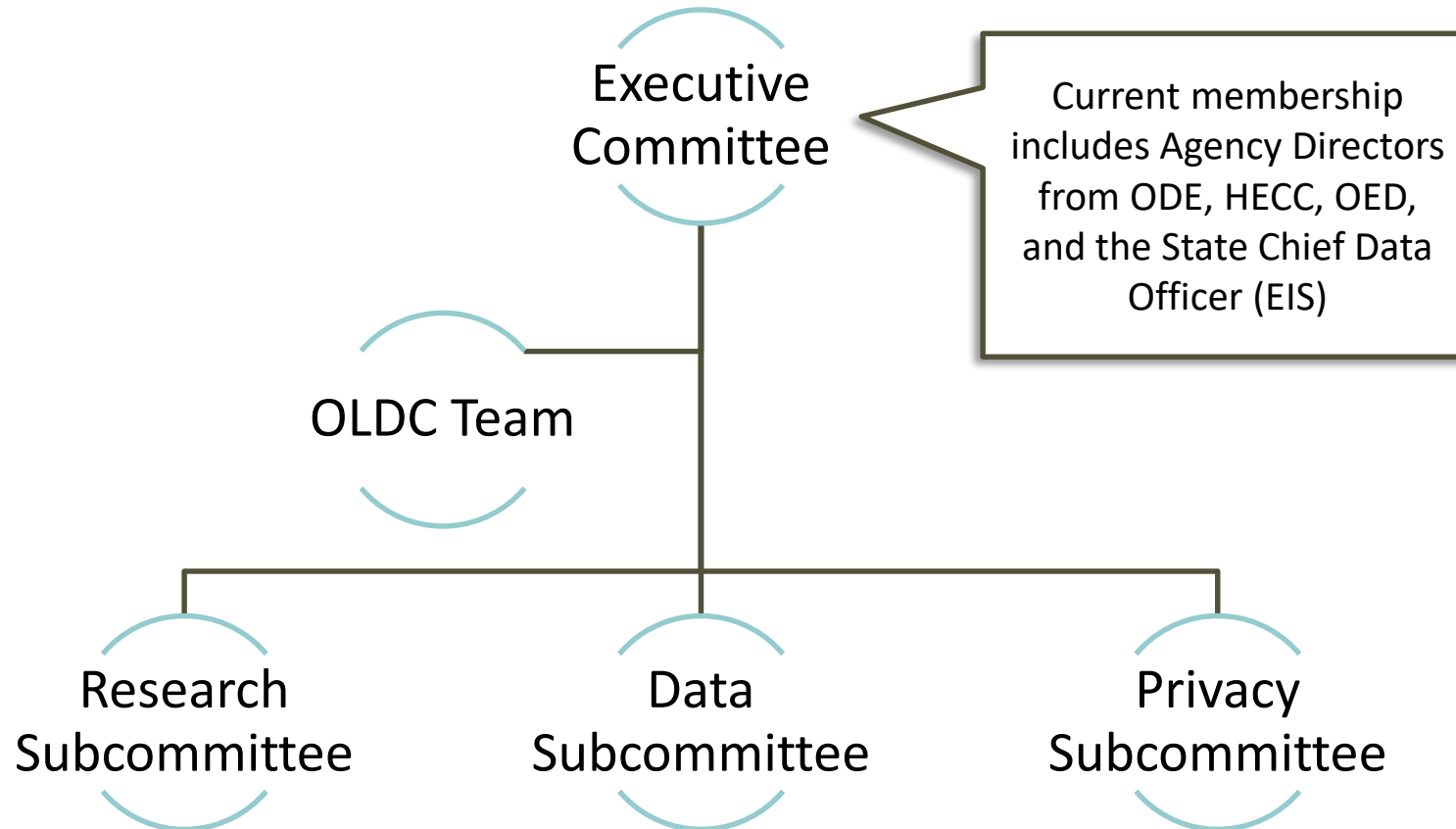
BOLI
Apprenticeship data

HECC
Private Career School

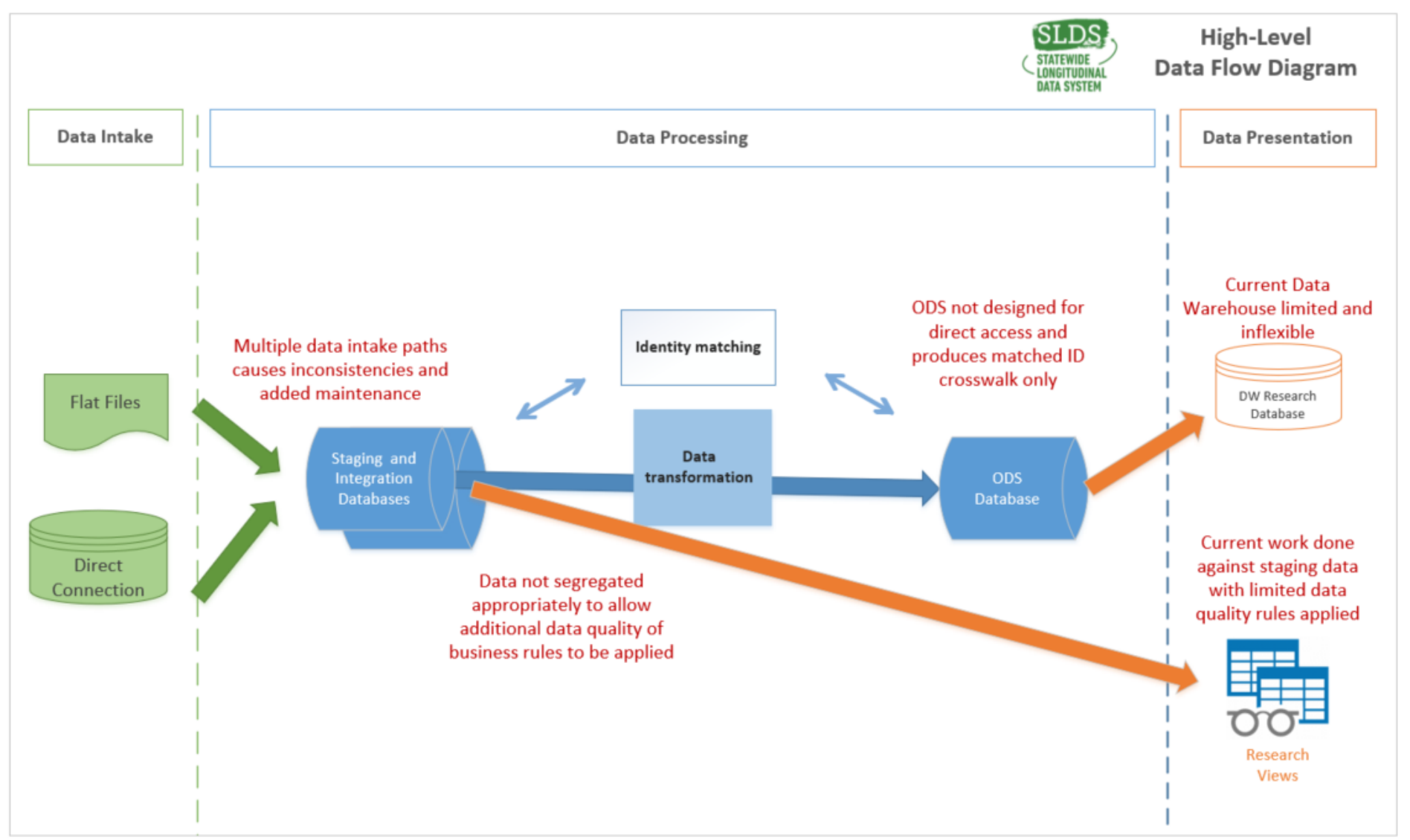
These next data sources will expand our research to include additional non-degree credentials reflecting the additional pathways students take outside of college or university



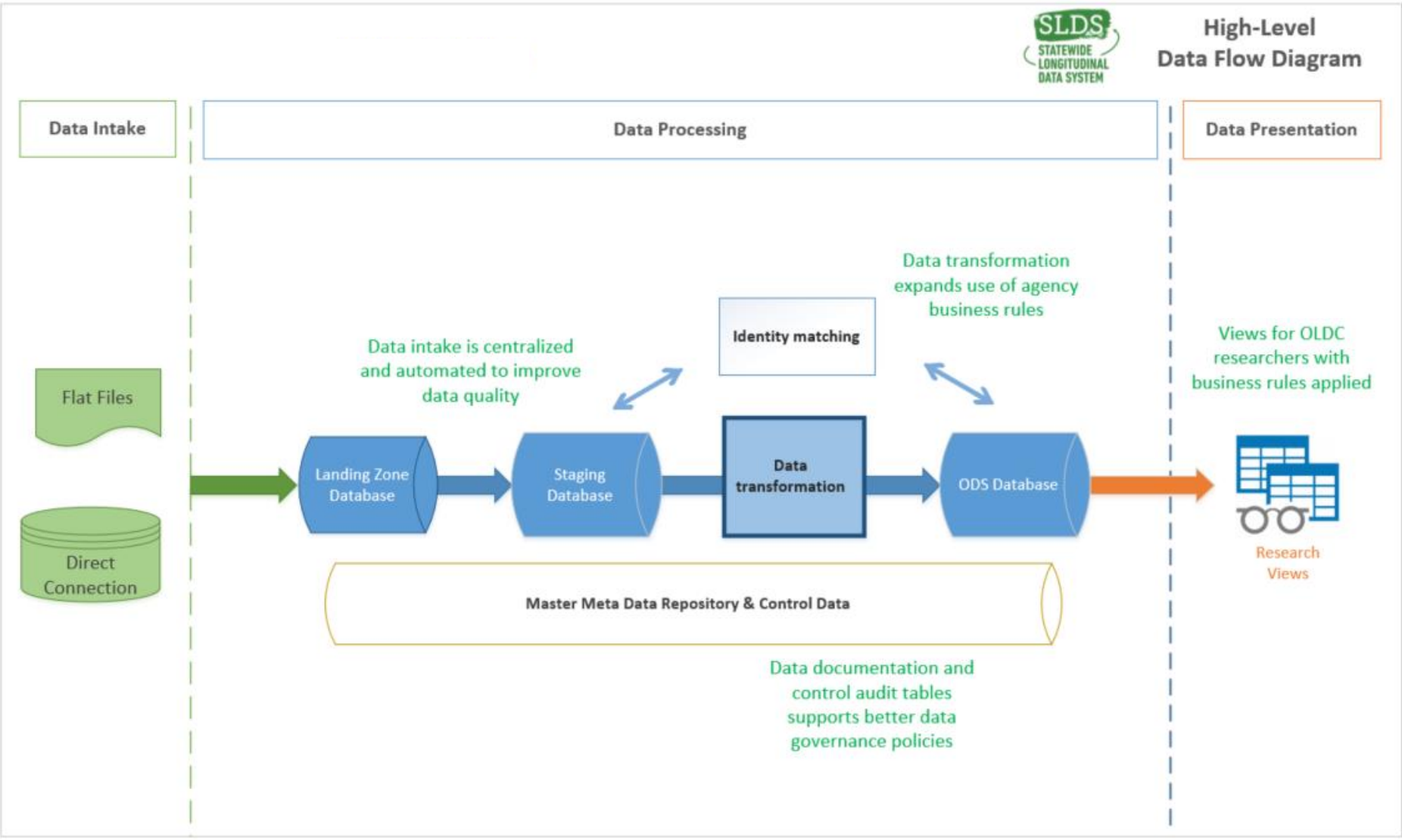
OLDC. Program governance structure ensures agency trust



OLDC. Initial data flow design limited quality and reporting ability



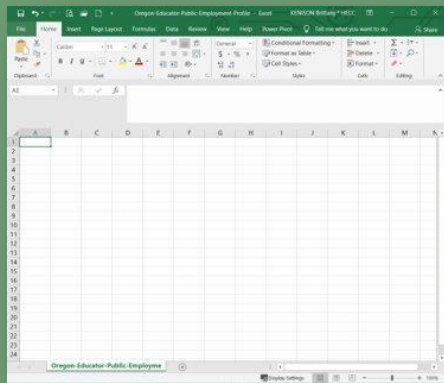
OLDC. Current data flow design enables range of reports



OLDC. Data products we provide



Raw Data File/ Curated Data File



Derived Data Report



Research Study



OLDC. The Research Agenda



2022-23 Research Agenda

Introduction - The Oregon Longitudinal Data Collaborative (OLDC) provides actionable data to identify the impact of educational programs, policies, and investments to help individuals and communities in Oregon thrive.¹ This Research Agenda identifies the specific intended outcomes for 2022-23 and the projects that will support those outcomes. Utilizing the OLDC managed Statewide Longitudinal Data System (SLDS) to connect the K-12, Postsecondary and Workforce systems, in order to understand how these systems interact and impact each other. OLDC places a high value on integrity, transparency and equity. We acknowledge that the projects and objectives listed here impact far more than state agency staff and as such we need to include a wider range of voices into the process. OLDC is committed to identifying and including community voice into all aspects of the research and reporting process.

Scope – This research agenda aligns with statewide, program and governance goals, objectives, and values.

Alignment to Statewide Data Goals to the statewide data goals established by the Oregon Data Strategy.²

Alignment to Governance Objectives - The intended outcomes and projects listed here must align with the scope of the OLDC program. Each outcome and project must:

- Link data from two of more data partners (K-12, Teachers, Postsecondary, Apprenticeship or Workforce)
- Be longitudinal in nature
- Not duplicate current projects or initiatives data partner agencies are already doing

¹ https://www.oregon.gov/highered/research/Documents/SLDS-mission%20vision%20values_2019%20poster.pdf
² <https://www.oregon.gov/das/OSCIO/Pages/DataStrategy.aspx#principles>

- The agenda is developed and published annually (*September to August*)
- Data products are approved by the Executive committee with input and recommendation from the Research and Data subcommittees as well as consultation with the Privacy subcommittee
- Ad-hoc data requests are reviewed by Research subcommittee



OLDC 2021-22 Research Agenda Included 9 Projects

Name	Type	Status
Educator Prep Program	Raw Data File	Complete
CTE Data File	Curated Data File	Complete
SB744 Data File	Raw Data File	Complete
HECC Equity Briefs	Raw Data File	Complete
ODE IES Grant	Raw Data File	Complete
Education Pathway	Data Report	Complete
SLDS Overview	Data Report	Complete
Educator Prep Program	Data Report	Complete
Healthcare Shortage Study	Research Study	Complete



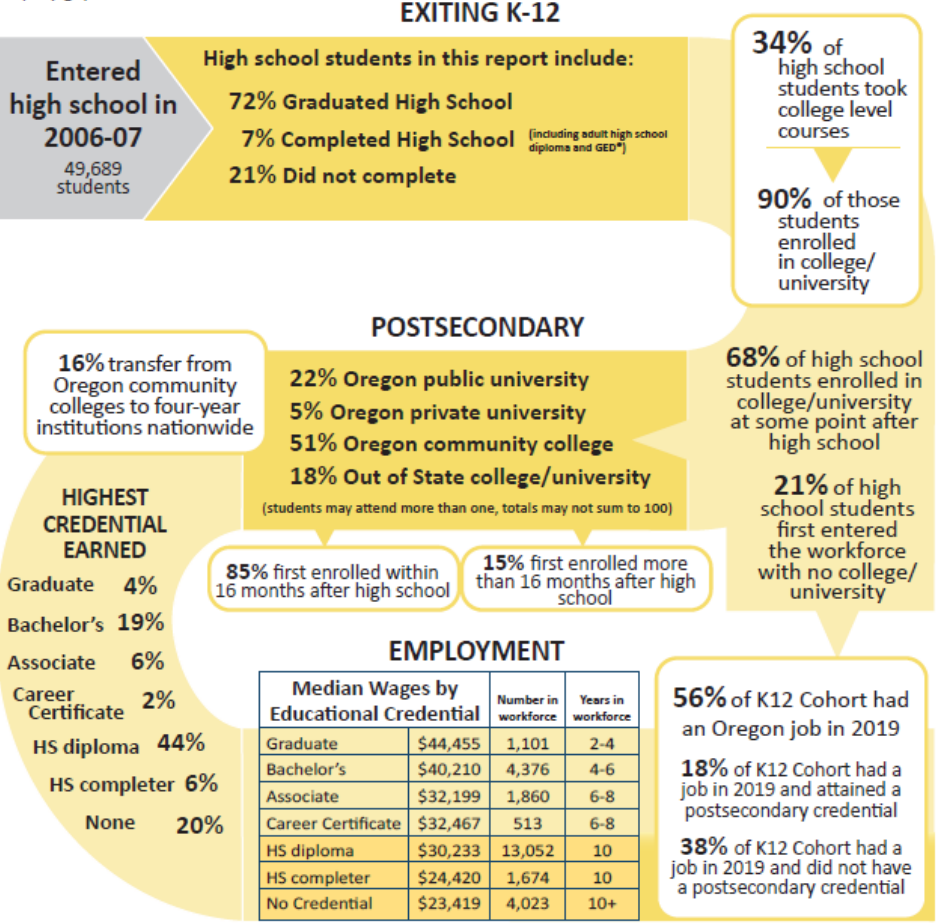
OLDC. Product Example – Education Pathway



Where Are They Now?

Educational Pathways in Oregon

Students in Oregon travel many different paths through the K-12, GED®, postsecondary, and employment systems. This illustration highlights the outcomes for all students who were freshmen in an Oregon public high school in 2006-07, regardless of which path they take after leaving high school. This report illuminates the many paths students take to earning educational credentials and what their wage outcomes are. All data listed reflect the enrollment and education credentials as of the end of the 2019-2020 academic year and wages earned in 2019. Future reports will investigate how this progress varies across the state and where equity gaps exist.



Education Pathway Report

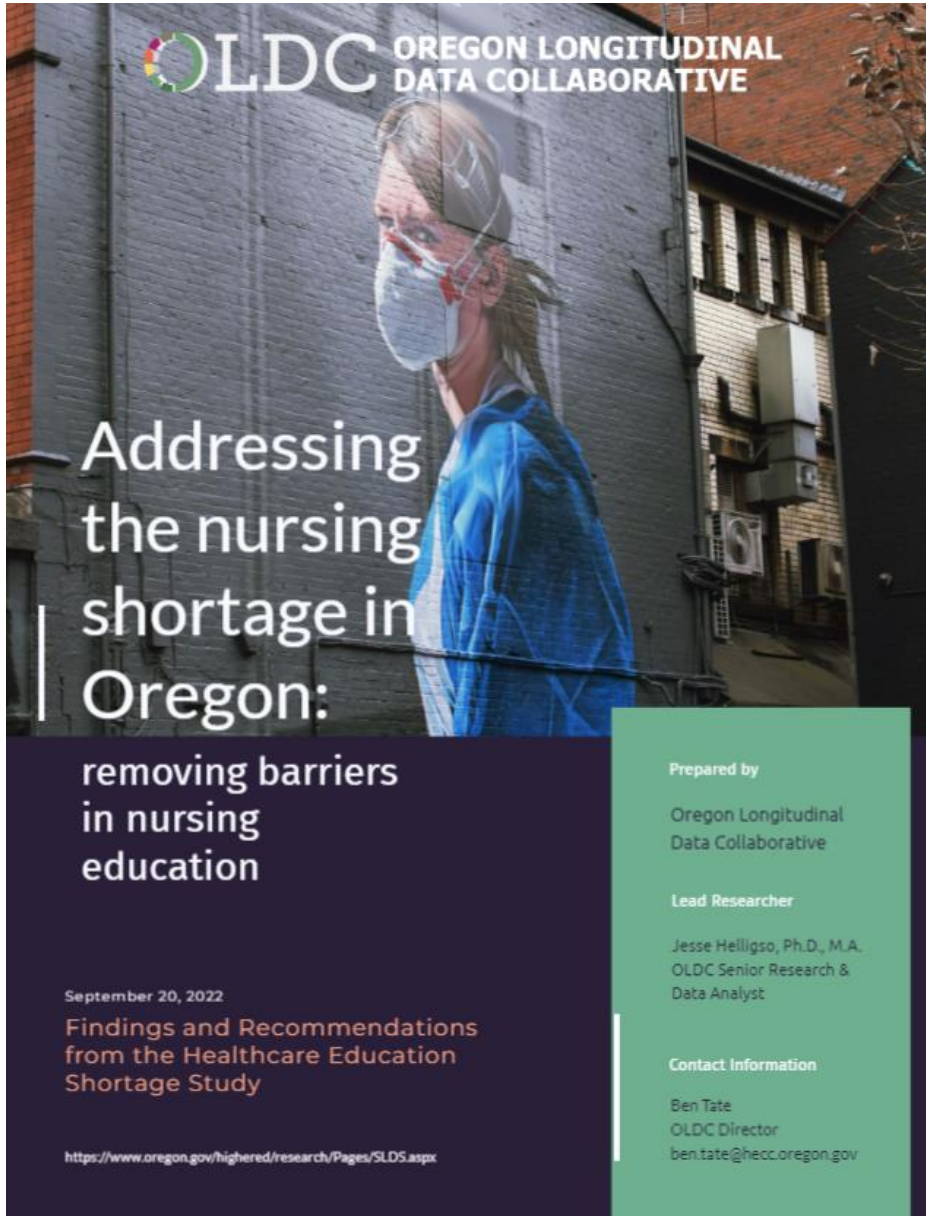
Infographic depicting the education pathways of students in a single K-12 graduating cohort from cradle to career, identifying key entries and achievement in postsecondary and workforce.

Beyond results, project clarified unique contribution of longitudinal metrics, which differ from agency reporting.

These next versions of this report will be interactive and allow views of outcomes by gender, race/ethnicity and rural/urban.



OLDC. Product Example – Healthcare Shortage Study



OLDC OREGON LONGITUDINAL DATA COLLABORATIVE

Addressing the nursing shortage in Oregon:

removing barriers in nursing education

September 20, 2022
Findings and Recommendations from the Healthcare Education Shortage Study

<https://www.oregon.gov/highered/research/Pages/SLDS.aspx>

Prepared by
Oregon Longitudinal Data Collaborative

Lead Researcher
Jesse Helligso, Ph.D., M.A.
OLDC Senior Research & Data Analyst

Contact Information
Ben Tate
OLDC Director
ben.tate@hecc.oregon.gov

Healthcare Shortage Study

- Oregon ranks last in the continental U.S for number of nursing graduates per capita across public institutions.
- Plenty of qualified students apply to the nursing programs in Oregon – about 5,400, but only 19% are accepted.

This study delves into the factors causing this shortage and recommends a series of steps to address these issues.

OLDC New Research Agenda for 2022-23 Includes Another 10 Projects

Name	Type
Educator Shortage Study	Research Study
Interactive Student Pathways	Data Report
Higher Education Equity Report	Data Report
Economic Mobility Study	Research Study
CTE Impact Study	Research Study
K-12 to Postsecondary Report (HB2147)	Raw Data File
Workforce Outcomes Report	Data Report
Oregon Educator Public Employment Report	Annual Refresh
CTE Federal Reporting	Annual Refresh
SLDS Overview Report	Annual Refresh



Thank you!

