

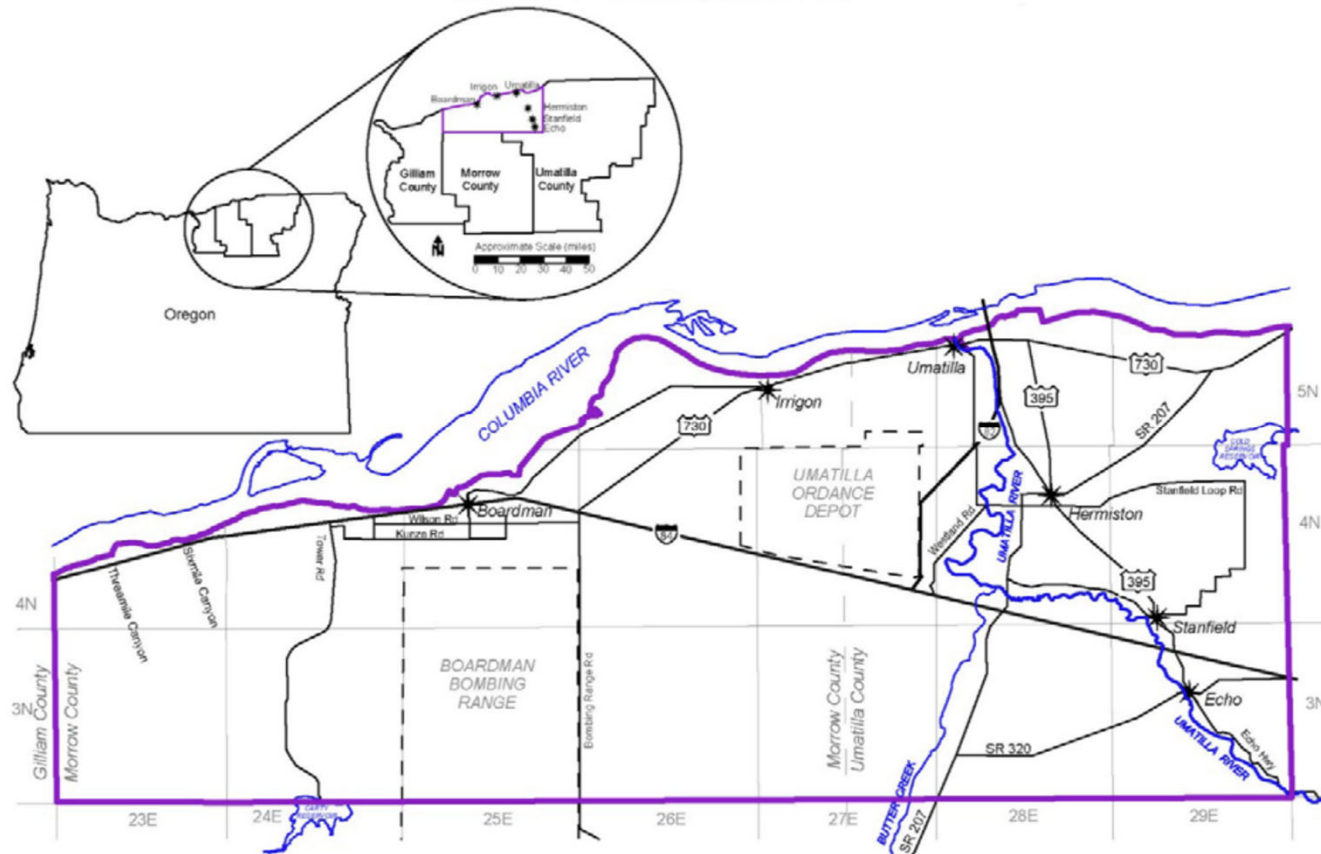
Lower Umatilla Basin Groundwater Management Area and Port of Morrow

Presentation to the House Interim Committee on Agriculture,
Land Use and Water

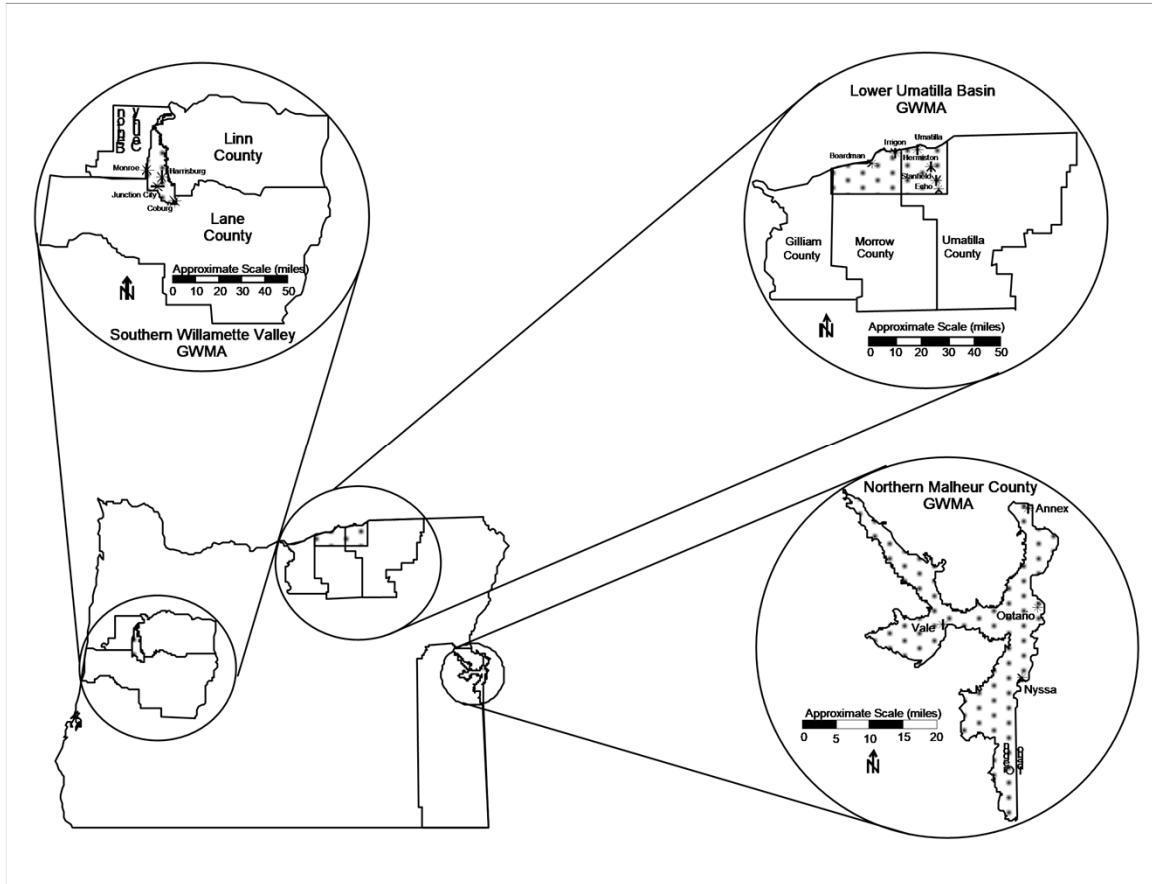
Leah Feldon, Deputy Director, Oregon DEQ

Sept. 21, 2022

Lower Umatilla Basin Groundwater Management Area



Oregon's Three Groundwater Management Areas



1. Lower Umatilla Basin
2. Northern Malheur County
3. Southern Willamette Valley

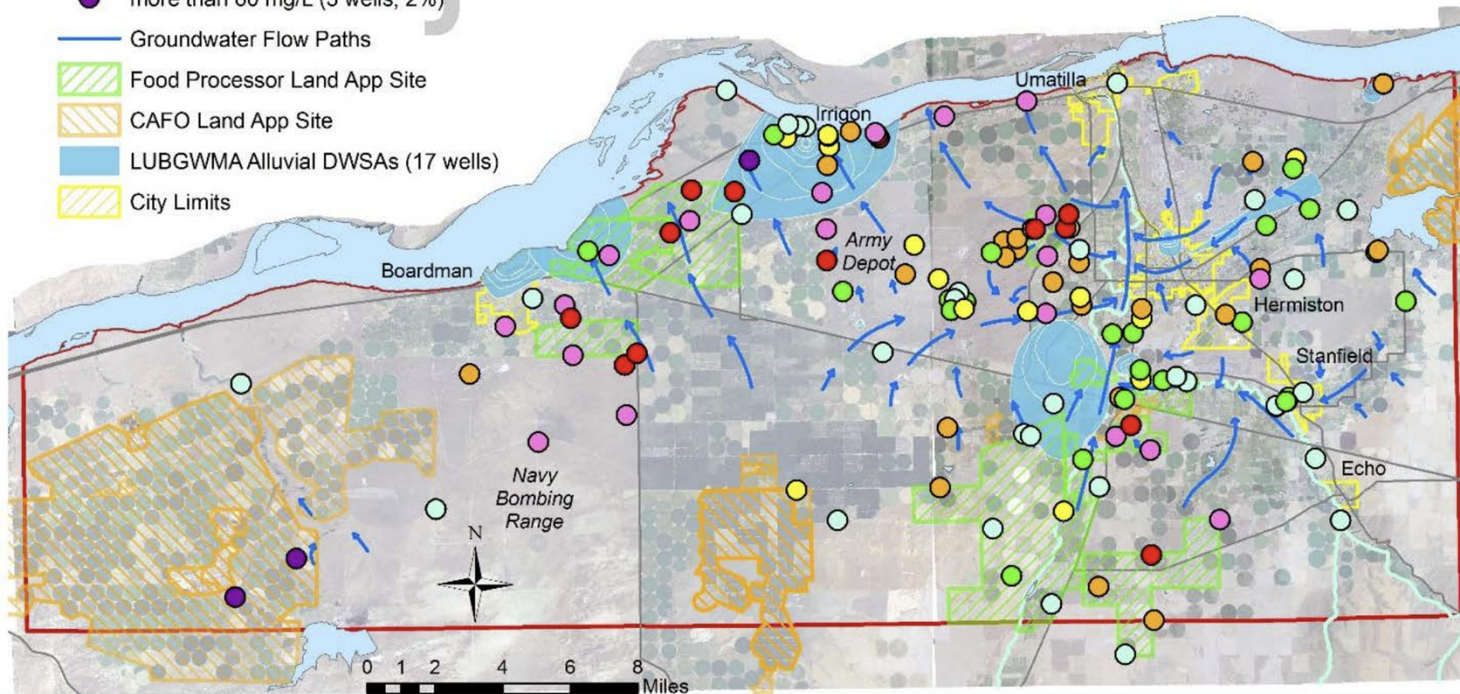
Figure 2-9
 Fourth Synoptic Sampling Event Nitrate Results
 Second LUBGWMA Action Plan

Legend

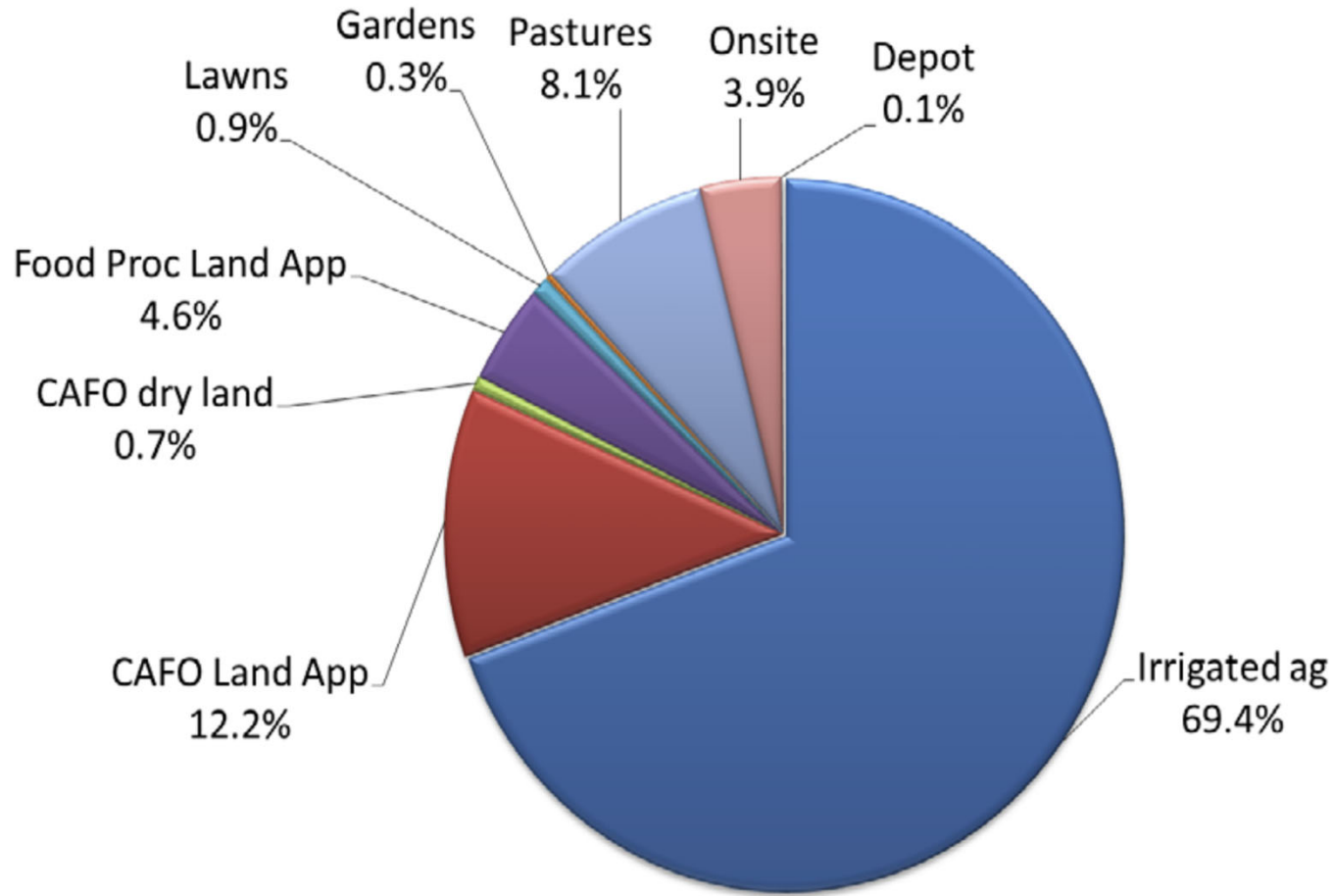
- less than 3 mg/L (33 well; 25%)
- 3 to 7 mg/L (26 wells; 20%)
- 7 to 10 mg/L (15 wells; 11%)
- 10 to 20 mg/L (22 wells; 17%)
- 20 to 40 mg/L (19 wells; 14%)
- 40 to 60 mg/L (14 wells; 11%)
- more than 60 mg/L (3 wells; 2%)

44% Exceed 10 mg/L Drinking Water Standard
 55% Exceed 7 mg/L GWMA Trigger Level

- Groundwater Flow Paths
- ▨ Food Processor Land App Site
- ▨ CAFO Land App Site
- ▨ LUBGWMA Alluvial DWSAs (17 wells)
- ▨ City Limits



Estimation of Nitrogen Leached to Groundwater Second LUBGWMA Action Plan



Port of Morrow and DEQ permitting



- Collects wastewater from food processors
- Water is nitrogen-rich
- DEQ permit allows beneficial reuse of water for irrigation

Path forward for the region

Two distinct but related paths:

- 1. Short/medium-term:** Immediate public health need – provide safe drinking water (OHA/Counties)
- 2. Long-term:** Minimize excess nitrate loading and reduce concentrations in groundwater to safe levels (DEQ/ODA/Counties/LUBGWMA Committee)