



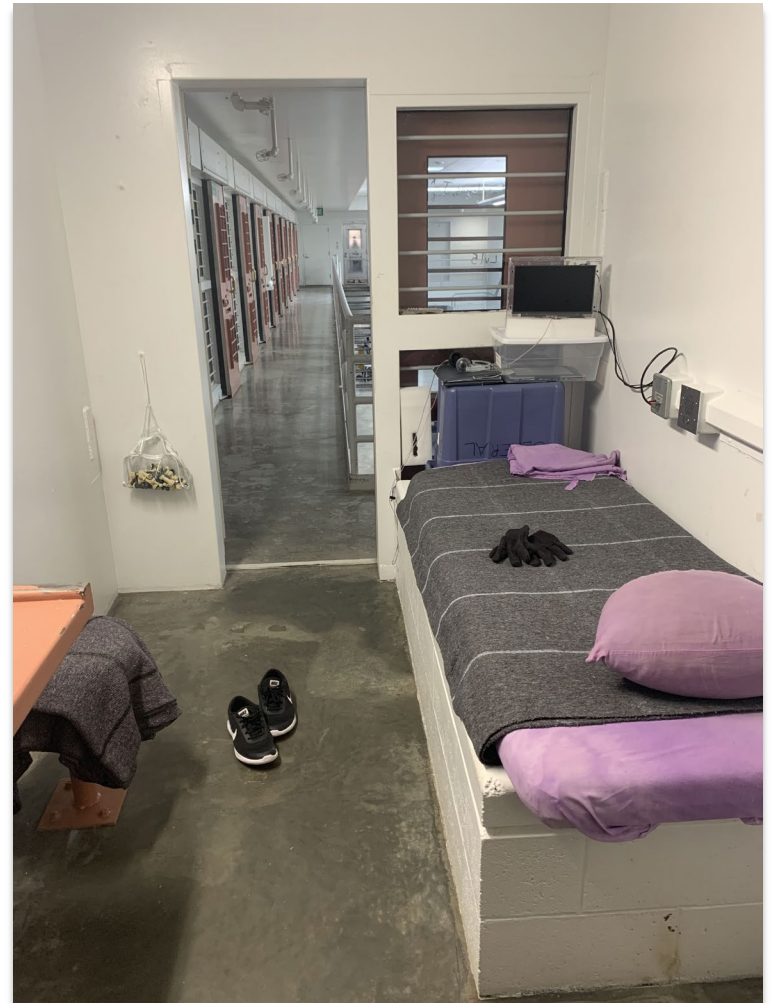
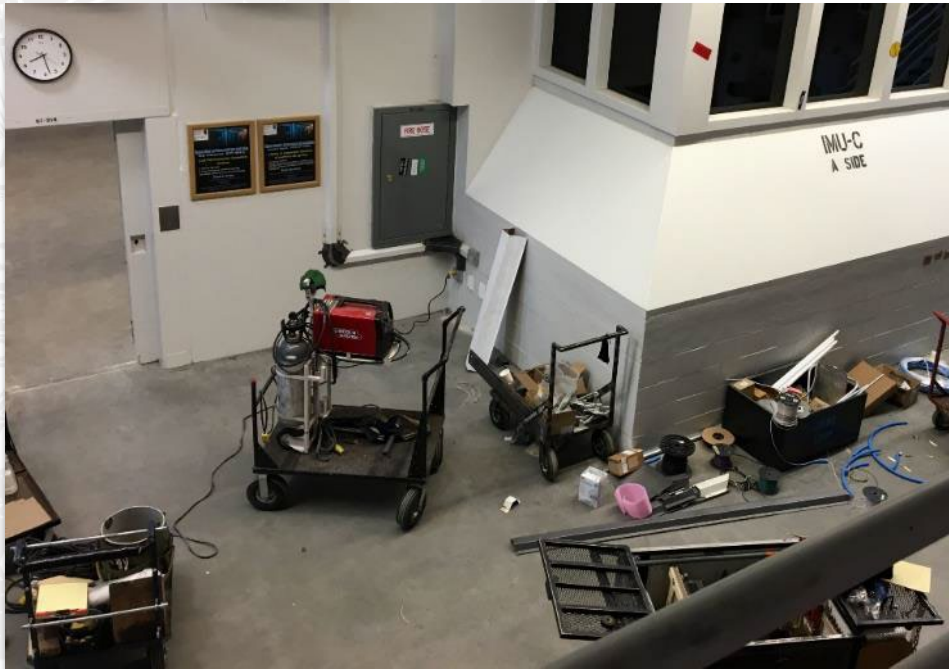
SPECIAL HOUSING

THE OREGON DEPARTMENT OF CORRECTIONS

Heidi Steward, Acting Director

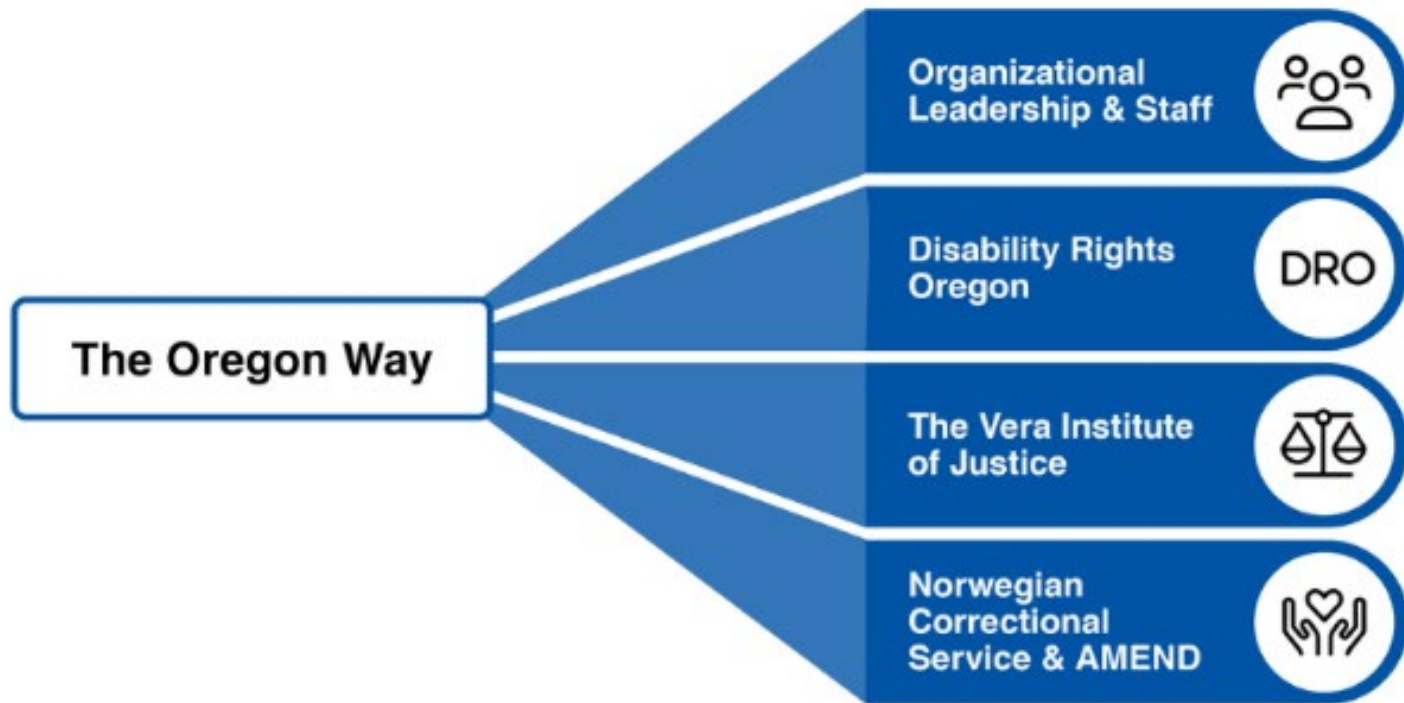
Mandi Perry, Special Housing Administrator

THE OREGON WAY AND SPECIAL HOUSING REFORM

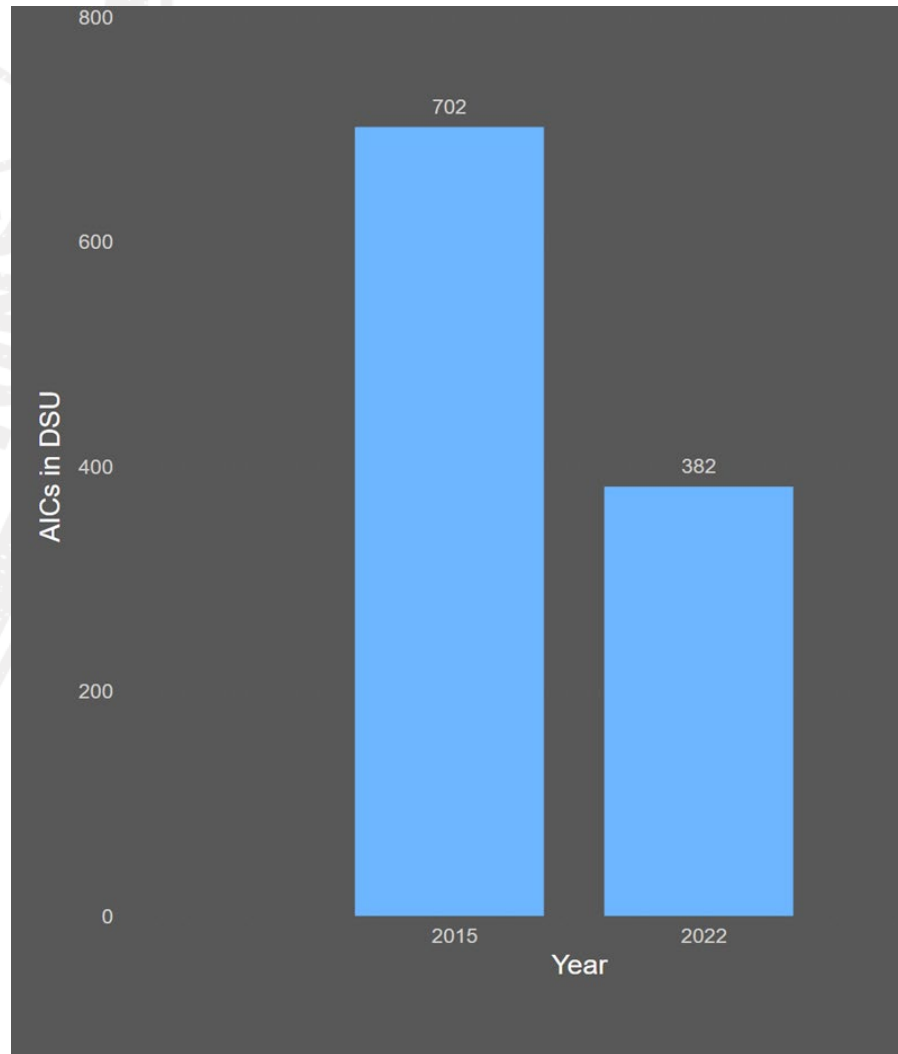


HISTORY OF SPECIAL HOUSING REFORM AT DOC

Transformational Partnerships for Oregon Department of Corrections



REDUCTION IN DSU BEDS SINCE VERA



HEARINGS MATRIX CHANGES

12/15/20 Hearings Matrix

Exhibit 1
MAJOR VIOLATION GRID

	#	Rule	
I	2.05	AIC Assault I	DSU: 120 days max LOP: 28 days max Fine: \$200 max
	1.01	Arson	
	2.03	Assault of the Member of the Public	
	4.15	Compromising an Employee	
	4.05	Disturbance	
	4.10	Distribution I	
	1.15	Drug Possession	
	4.20	Escape I	
	2.15	Extortion I	
	2.40	Hostage Taking	
	4.33	Possession of an Electronic Device	
	4.25	Possession of an Escape Device	
	4.30	Possession of a Weapon	
	4.35	Racketeering	
2.20	Sexual Assault/Abuse		
2.01	Staff Assault I		
4.45	Unauthorized Organization I		
II	2.06	AIC Assault II	DSU: 60 days max LOP: 28 days max Fine: \$100 max
	1.10	Contraband I	
	4.11	Distribution II	
	4.21	Escape II	
	2.16	Extortion II	
	4.04	Leave Violation	
	2.25	Sexual Harassment	
	2.02	Staff Assault II	
III	2.07	AIC Assault III	DSU: 28 days max LOP: 28 days max Fine: \$75 max
	4.01	Disobedience of an Order I	
	2.10	Disrespect I	
	2.30	Non-Assaultive Sexual Activity	
	1.05	Property I	
	4.40	Unauthorized Area I	
	4.46	Unauthorized Organization II	
1.25	Unauthorized Use of Info Systems I		
IV	2.45	Body Modification	DSU: 14 days max LOP: 14 days max Fine: \$50 max
	1.11	Contraband II	
	4.02	Disobedience of an Order II	
	2.11	Disrespect II	
	3.01	False Information to Employees I	
	3.05	Forgery	
	3.15	Fraud	
	3.10	Gambling	
	1.20	Possession of Body Modification Par.	
	1.26	Unauthorized Use of Info Systems II	

Prior to 12/15/20 Hearings Matrix

Exhibit 1

MAJOR VIOLATION GRID INMATES MISCONDUCT HISTORY SCALE						
	#	Rule	A 6 or More Prior Major Violations Within the Last 2 Yrs.	B 4-5 Prior Major Violations Within the Last 2 Yrs.	C 2-3 Prior Major Violations Within the Last 2 Yrs.	D 0-1 Prior Major Violations Within the Last 2 Yrs.
I	1.01	Arson	DSU: 120 days LOP: 28 days max Fine: \$200 max Time Reduction: Mandatory	DSU: 90-120 days LOP: 28 days max Fine: \$200 max Time Reduction: Mandatory	DSU: 60-120 days LOP: 28 days max Fine: \$200 max Time Reduction: Mandatory	DSU: 60-120 days LOP: 28 days max Fine: \$200 max Time Reduction: Mandatory
	4.15	Compromising an Employee				
	4.05	Disturbance				
	4.10	Distribution I				
	1.15	Drug Possession				
	4.20	Escape I				
	2.15	Extortion I				
	2.40	Hostage Taking				
	2.05	Inmate Assault I				
	4.33	Possession of an Electronic Device				
	4.25	Possession of an Escape Device				
	4.30	Possession of a Weapon				
	4.35	Racketeering				
	2.20	Sexual Assault				
2.01	Staff Assault I					
4.45	Unauthorized Organization I					
II	1.10	Contraband I	DSU: 30-60 days LOP: 28 days max Fine: \$100 max	DSU: 30-45 days LOP: 28 days max Fine: \$100 max	DSU: 25-35 days LOP: 21 days max Fine: \$100 max	DSU: 20-30 days LOP: 21 days max Fine: \$100 max
	4.11	Distribution II				
	4.21	Escape II				
	2.16	Extortion II				
	2.06	Inmate Assault II				
	2.25	Sexual Coercion				
	2.02	Staff Assault II				
III	2.45	Body Modification	DSU: 14-28 days LOP: 28 days max Fine: \$75 max	DSU: 14-21 days LOP: 21 days max Fine: \$75 max	DSU: 7-14 days LOP: 14 days max Fine: \$75 max	DSU: 14 days max LOP: 14 days max Fine: \$75 max
	4.01	Disobedience of an Order I				
	2.10	Disrespect I				
	2.07	Inmate Assault III				
	2.30	Non-Assaultive Sexual Activity				
	1.20	Possession of Body Modification Par.				
	1.05	Property I				
	4.04	Transitional Leave Violation				
	4.40	Unauthorized Area I				
	4.46	Unauthorized Organization II				
1.25	Unauthorized Use of Info Systems I					
IV	1.11	Contraband II	DSU: 14 days max LOP: 14 days max Fine: \$50 max	DSU: 14 days max LOP: 10 days max Fine: \$50 max	DSU: 10 days max LOP: 10 days max Fine: \$50 max	DSU: 7 days max LOP: 10 days max Fine: \$50 max
	4.02	Disobedience of an Order II				
	2.11	Disrespect II				
	3.01	False Information to Employees I				
	3.05	Forgery				
	3.15	Fraud				
	3.10	Gambling				
	2.35	Sexual Solicitation				
1.26	Unauthorized Use of Info Systems II					

HEARINGS MATRIX CHANGES

	#	Rule	
VI	(4)	(c) Disobedience III	Fine : \$25 max Seg : 0-7 days LOP : 7-14 days
	(2)	(f) Disrespect III	
	(4)	(p) Unauthorized Organization III	
VII	(1)	(c) Property II	Fine : \$15 max Seg : 0-5 days LOP : 7-10 days
	(3)	(c) False Information II	
	(3)	(e) Gambling	
VIII	(1)	(f) Contraband III	Fine : \$10 max Seg : 0-3 days LOP : 0-7 days
	(4)	(m) Unauthorized Area II	

Prior to 2009



	#	Rule	
V	4.03	Disobedience III	LOP:10 days max Fine: \$25 max
	2.12	Disrespect III	
	1.06	Property II	
VI	1.12	Contraband III	LOP: 7 days max Fine: \$15 max
	3.02	False Information to Employees II	
	4.41	Unauthorized Area II	

2009

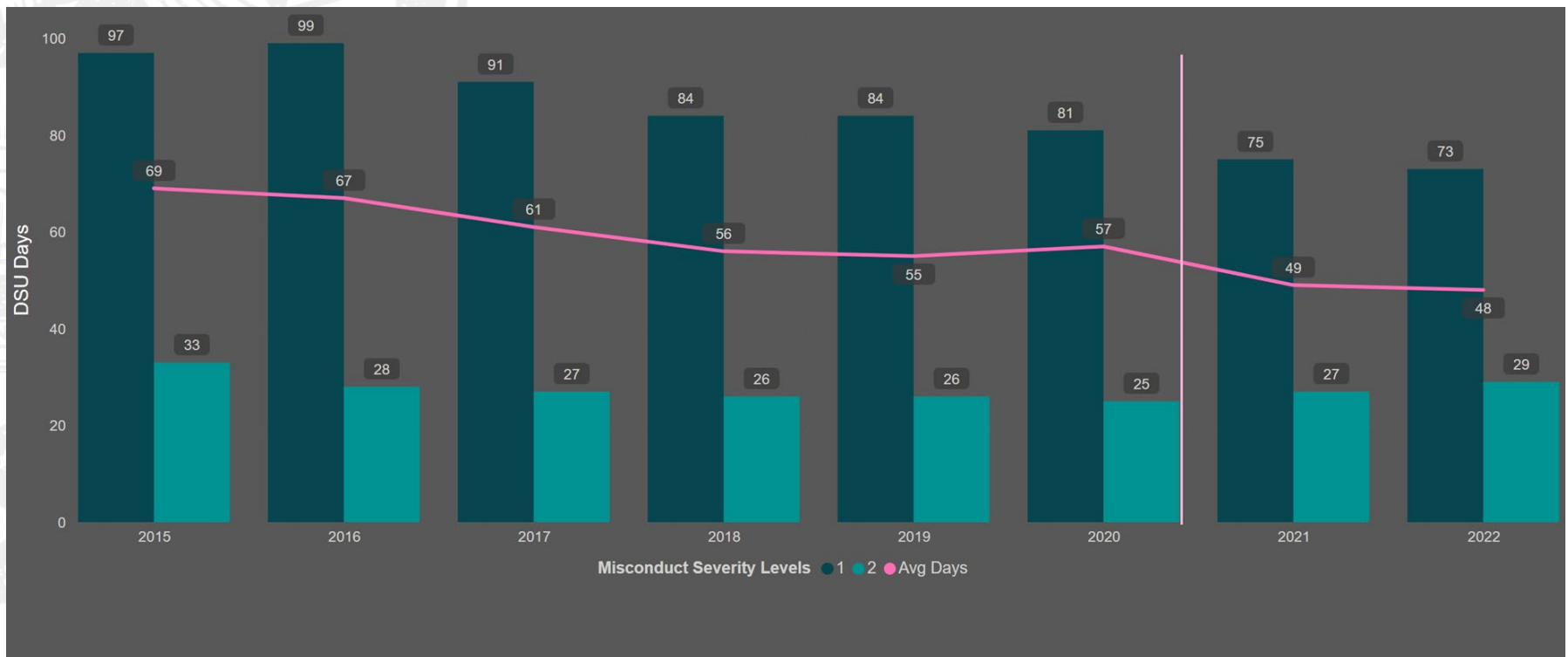


2020

	#	Rule	
V	4.03	Disobedience III	LOP:10 days max Fine: \$25 max
	2.12	Disrespect III	
	1.06	Property II	
VI	1.12	Contraband III	LOP: 7 days max Fine: \$15 max
	3.02	False Information to Employees II	
	4.41	Unauthorized Area II	

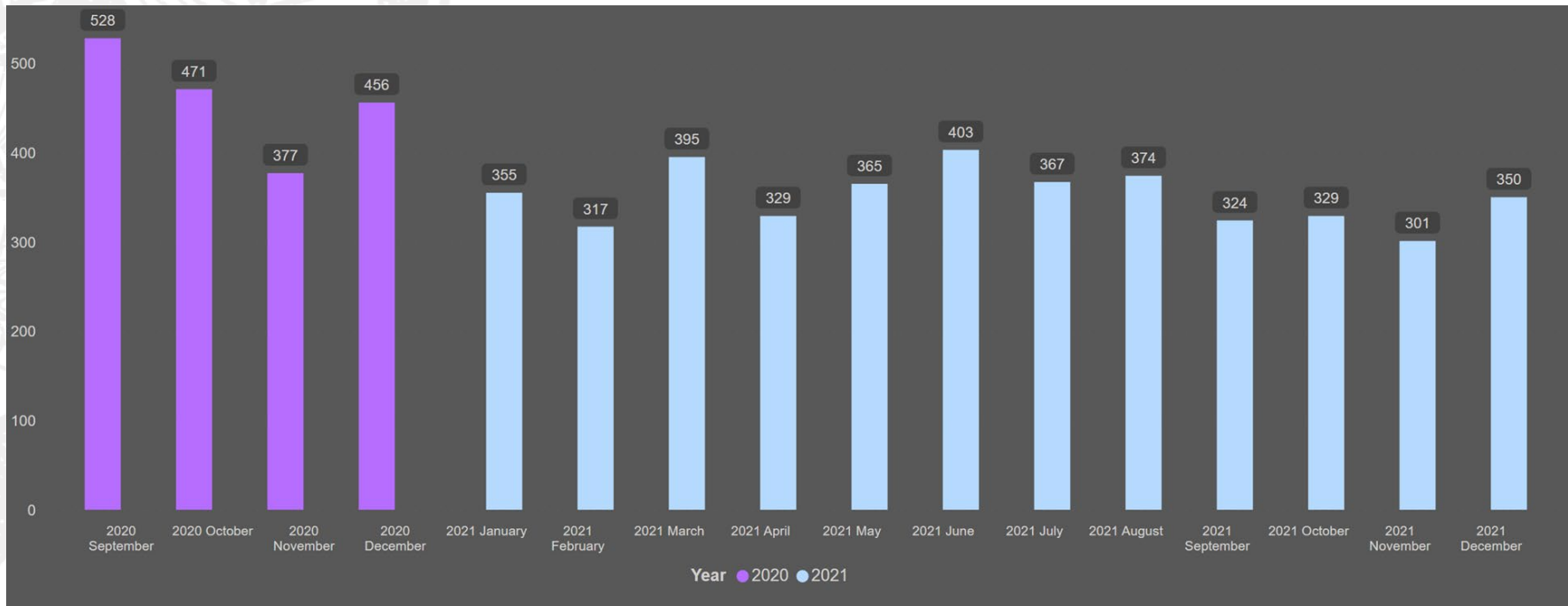
SHORT-TERM CHANGES

Average DSU Length of Stay



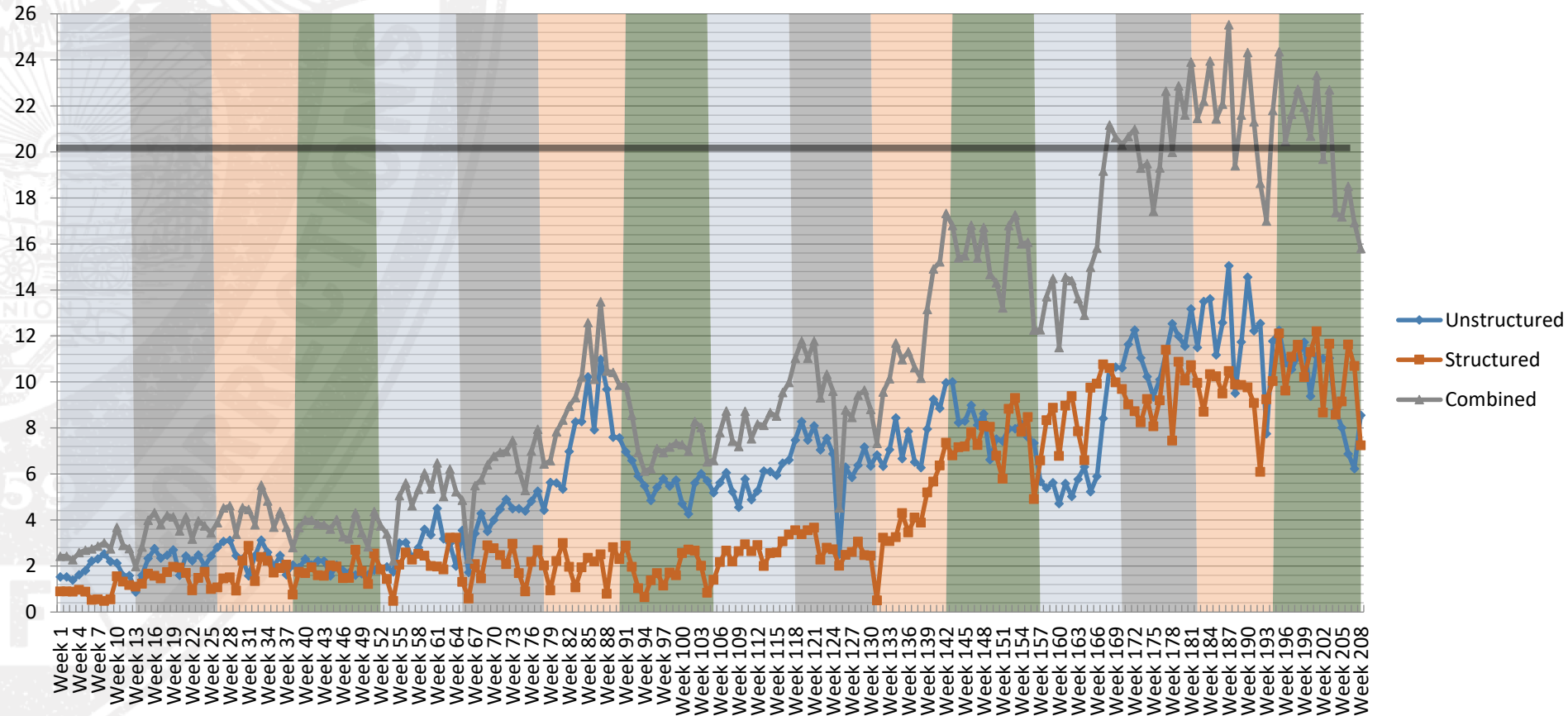
SHORT-TERM CHANGES

DSU Sanctions Imposed per Month

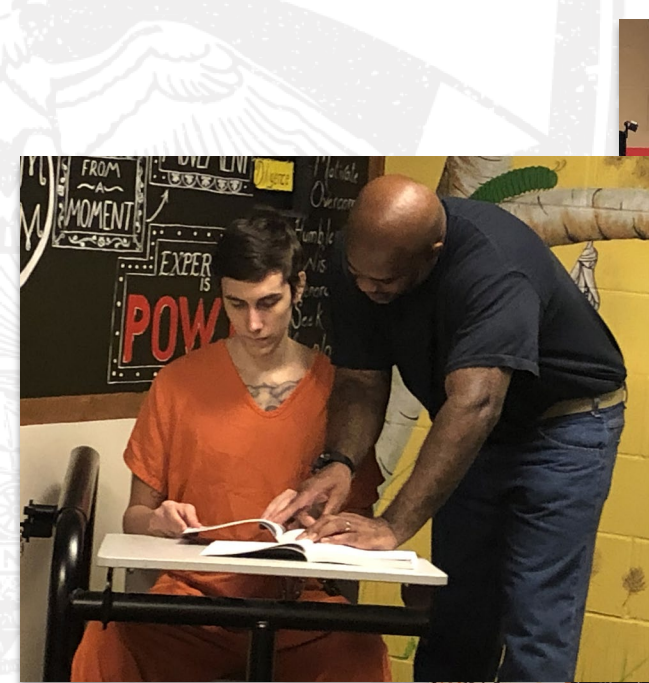


SHORT-TERM CHANGES – OUT OF CELL TIME

Structured, Unstructured, and Combined Out of Cell Time (Q1-2016 to Q4-2019)



LONG-TERM CHANGES



TRCI's peer-to-peer mentorship program in DSU.

QUESTIONS?

- Heidi Steward – Heidi.R.Steward@doc.Oregon.gov
- Mandi Perry - Mandi.C.Perry@doc.Oregon.gov