

---

# COVID-19 Update

*House Interim Special Committee On COVID-19  
Response*

June 3, 2022

Patrick Allen  
Director

The logo for the Oregon Health Authority. It features the word "Oregon" in a smaller, orange, serif font above the word "Health" in a large, blue, serif font. Below "Health" is the word "Authority" in a smaller, orange, serif font. A thin blue horizontal line is positioned between "Health" and "Authority".

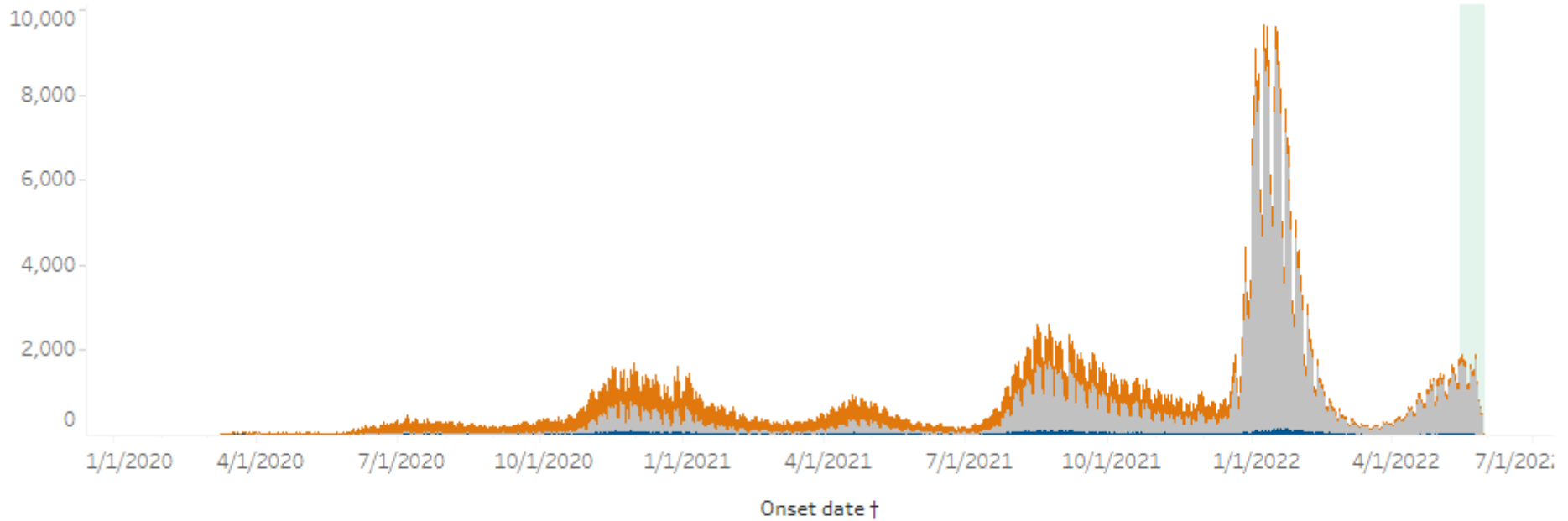
Oregon  
Health  
Authority

# Oregon COVID-19 Cases and Deaths

Total	
Cases	
Total	765,449
per 100k	18,148
Rank	2 <sup>nd</sup> lowest (median: 25,964)
Deaths	
Total	7,635
per 100k	181
Rank	9 <sup>th</sup> lowest (median: 303)

Last 7 Days	
Cases	
Total	10,082
per 100k	239
Rank	37 <sup>th</sup> lowest (median: 175)
Deaths	
Total	37
per 100k	0.9
Rank	38 <sup>nd</sup> lowest (median: 0.6 )

# Oregon's Epi Curve

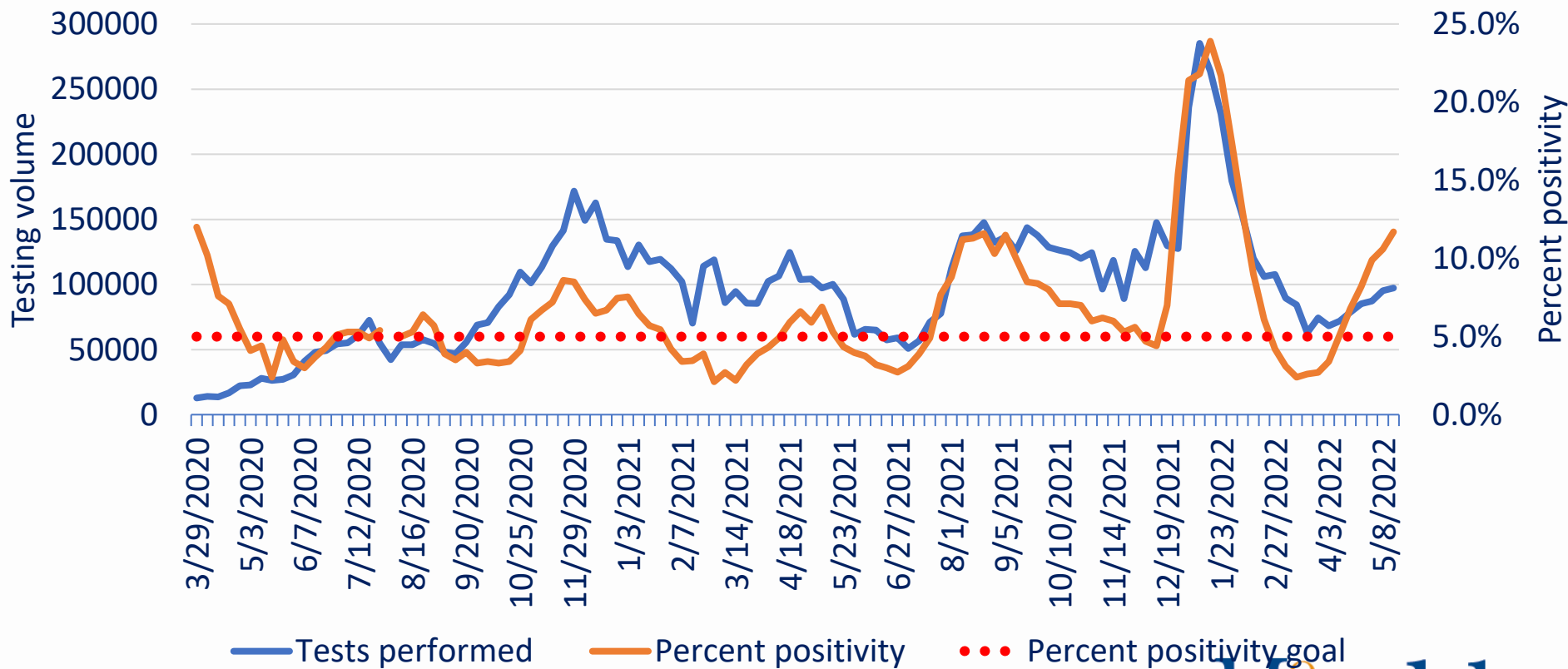


Note: The shaded area shows the past 17 days. Not all people who got sick during this time period have been reported yet to OHA.

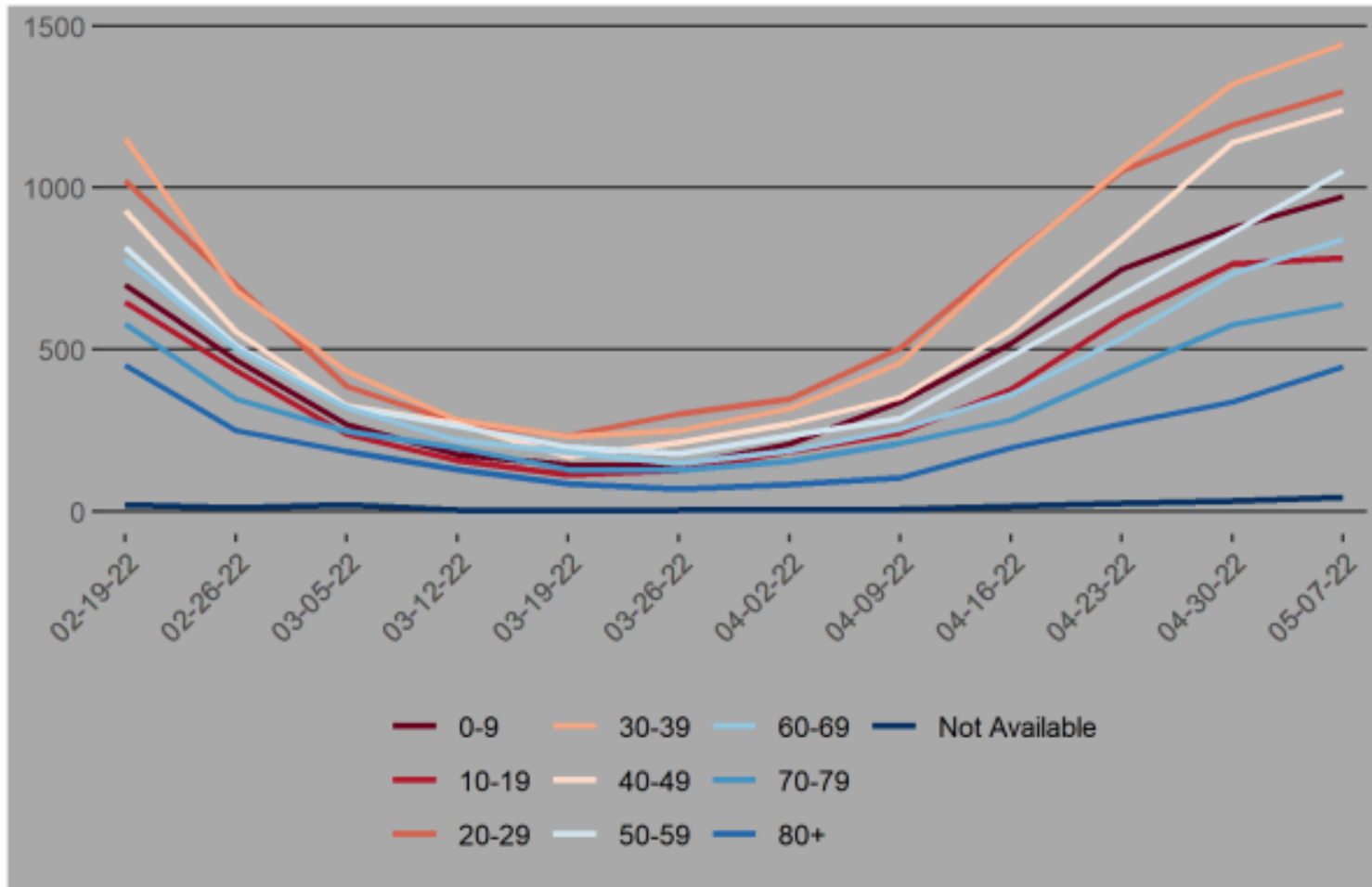
■ Not Hospitalized      ■ Hospitalization unknown      ■ Hospitalized during illness

# Testing volume and % positivity trends

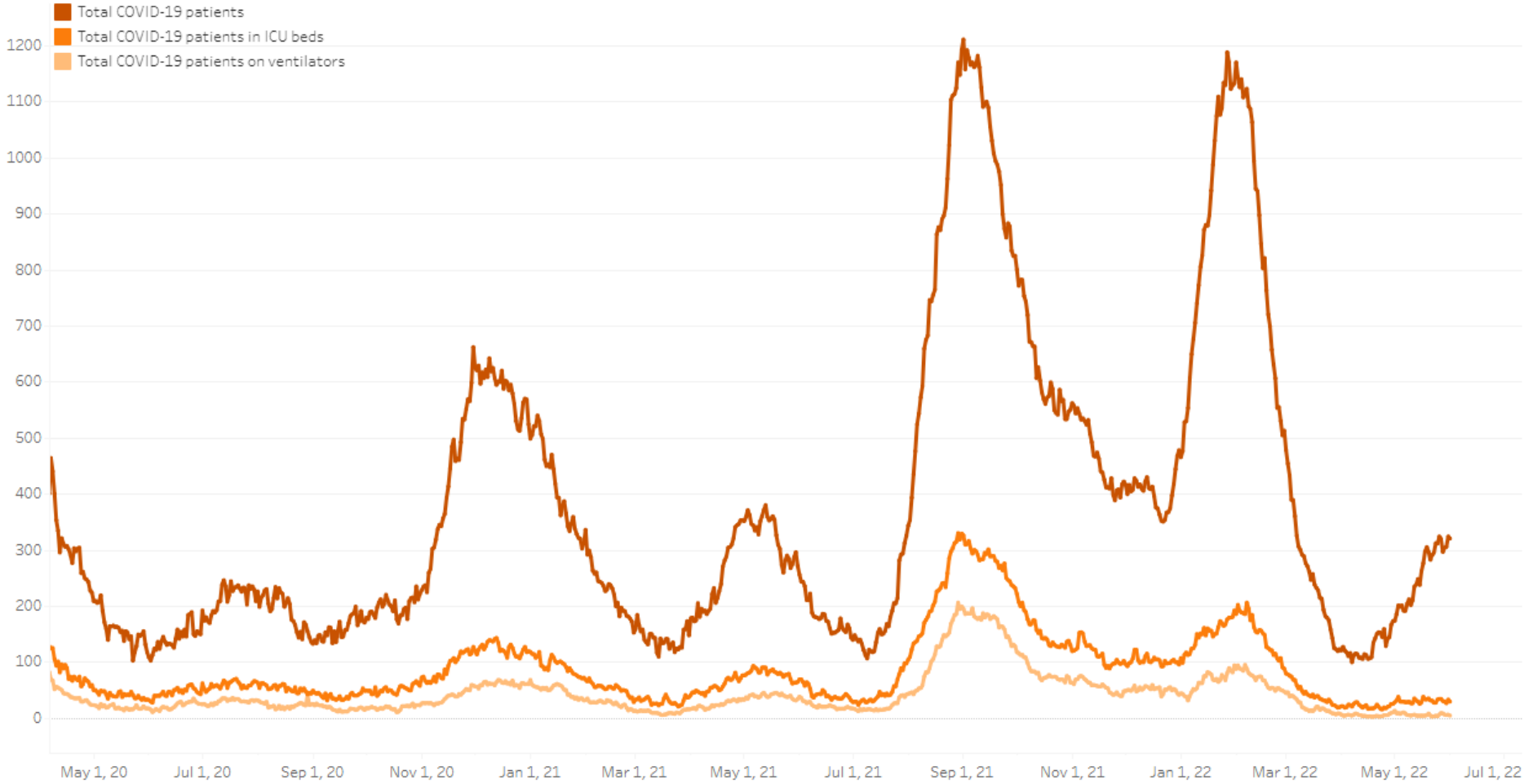
- From 5/15-5/21, estimated testing volume was stable at **97,000** and percent positivity increased to **11.7%**



# Recent Cases by Age and Week of Onset

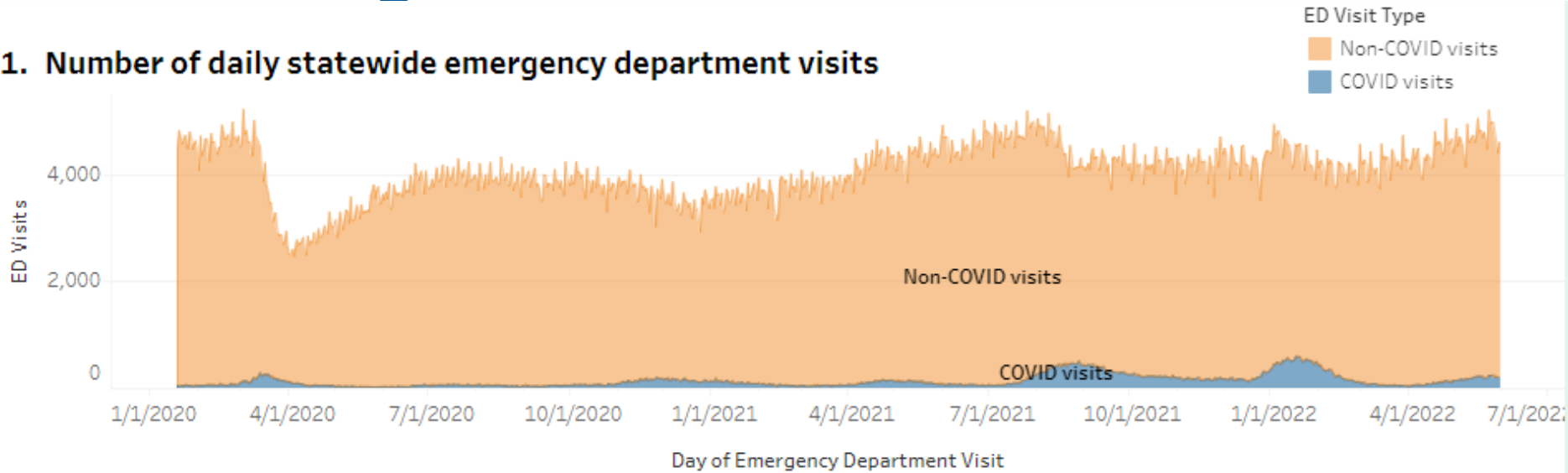


# Hospital Trends by Severity



# Percentage of Statewide ED Visits for

## 1. Number of daily statewide emergency department visits



## 2. Percentage of statewide emergency department visits for COVID-19-like illness (CLI) by day

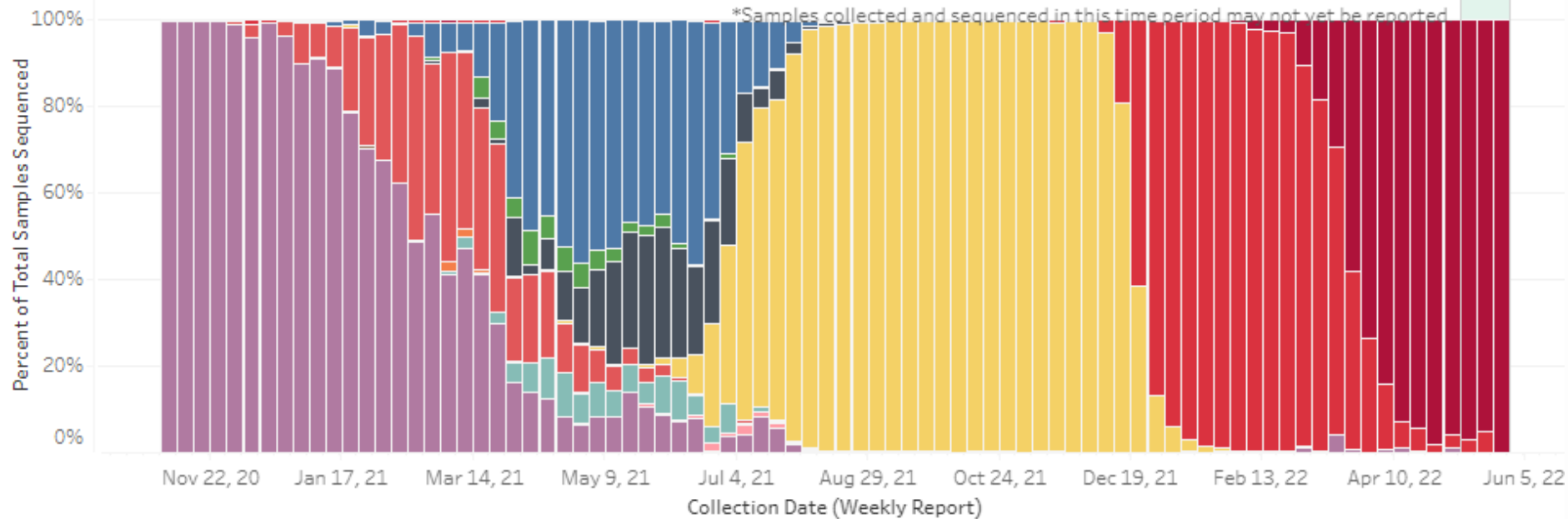


# Variant Update

## Lineage

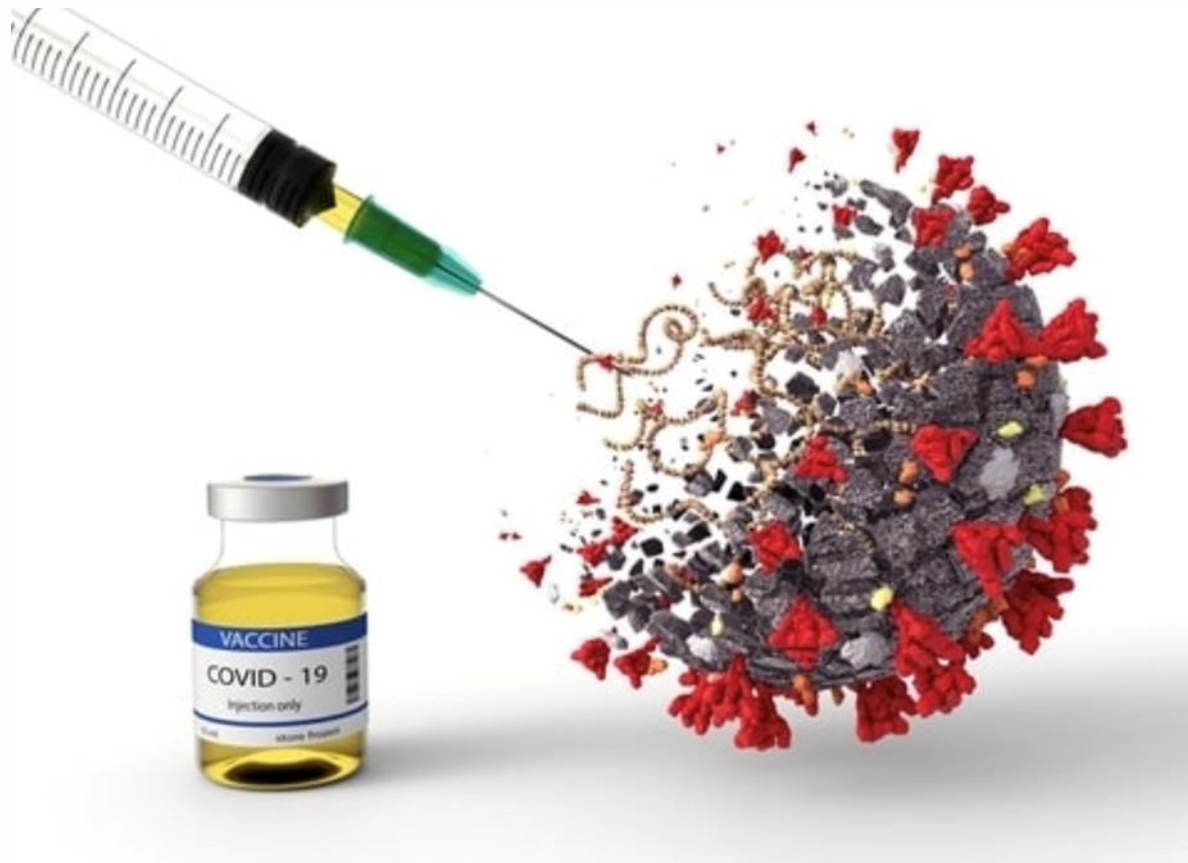


## Lineage Prevalence Over Time

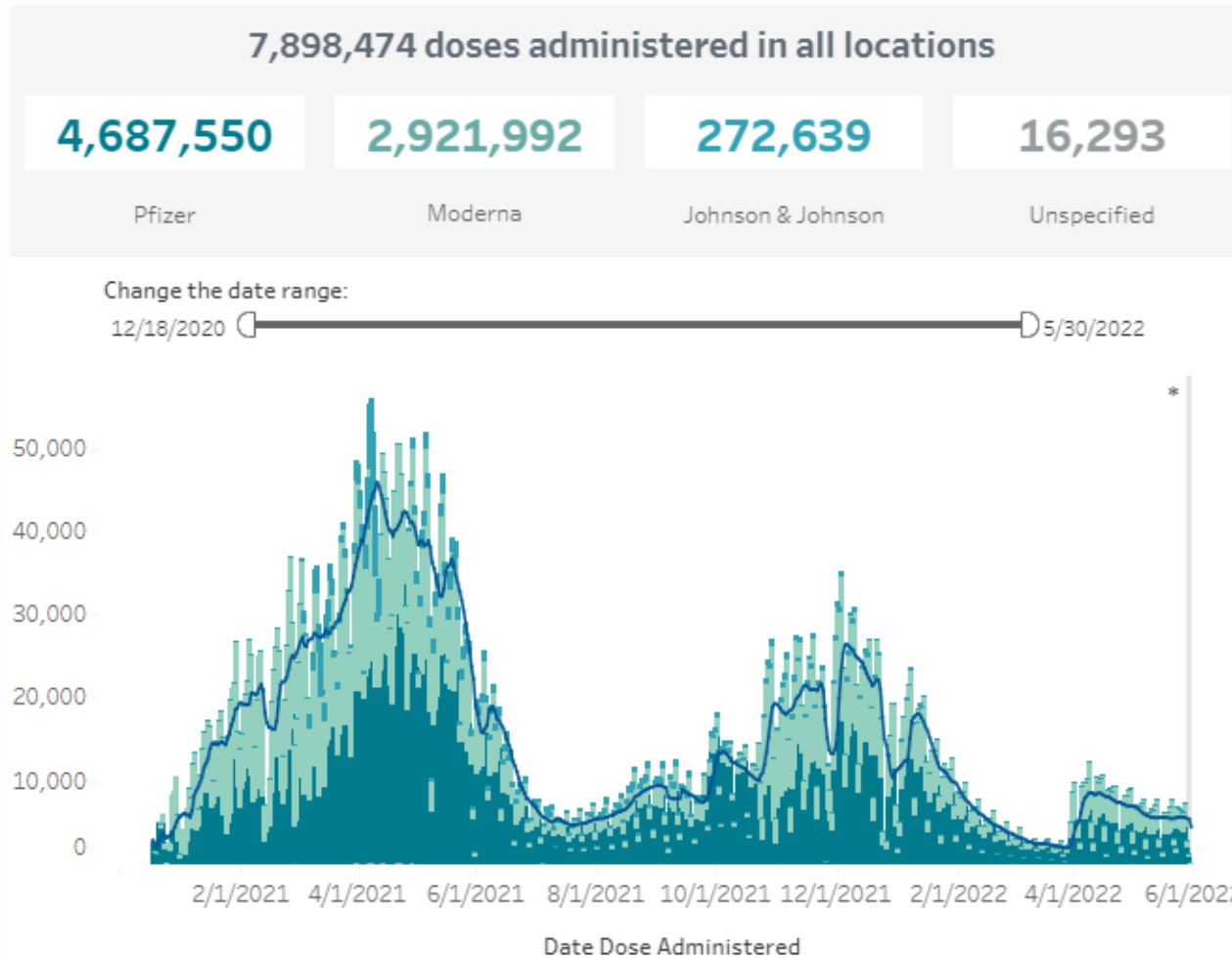




# COVID-19 Vaccination Update



# COVID-19 Vaccine Doses Administered by Day

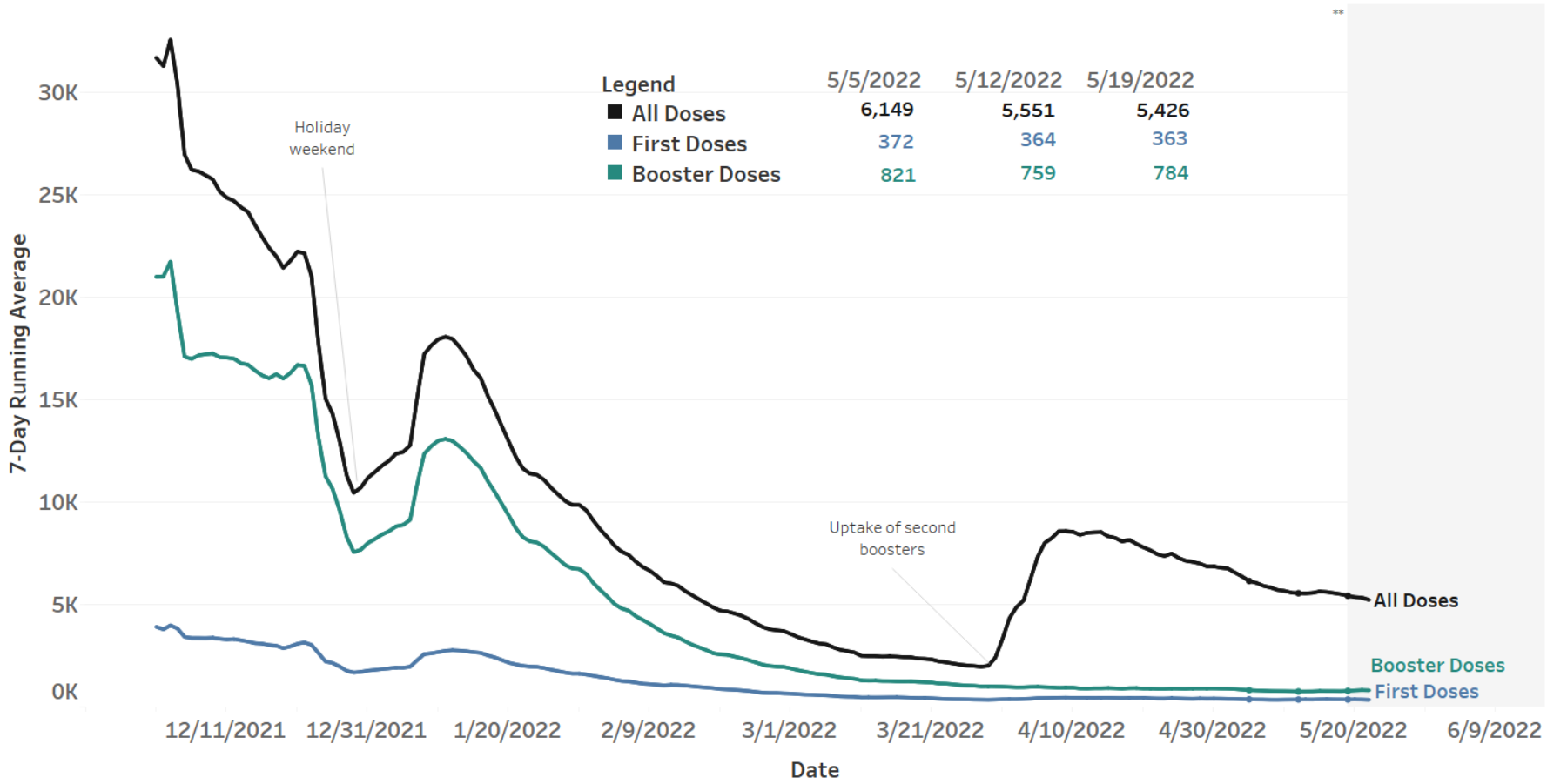


Source:

<https://public.tableau.com/profile/oregon.health.authority.covid.19#!/vizhome/OregonCOVID-19VaccinationTrends/OregonCountyVaccinationTrends>

# 7-Day Running Averages: Total Doses Administered and First Doses and Extra Doses

ALERT IIS, All Ages



Data current as of 12:01am 5/23/2022

View dose administrations online [here](#) and [here](#)  
 View averages of people initiated online [here](#)

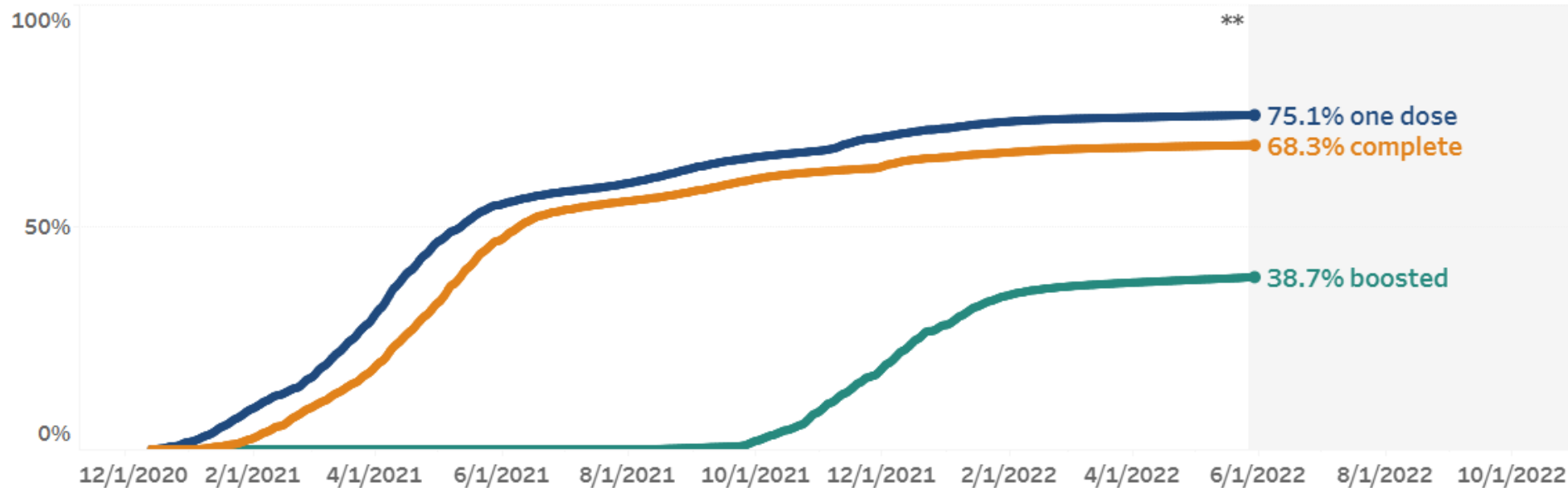


# Percent of People Living in Oregon Vaccinated

75.1% have initiated COVID-19 vaccination and have received at least one dose of any COVID-19 vaccine.\*

68.3% have completed their primary series, or have received 1 dose of Johnson & Johnson, 2 doses of Moderna, or 2 doses of Pfizer vaccines.

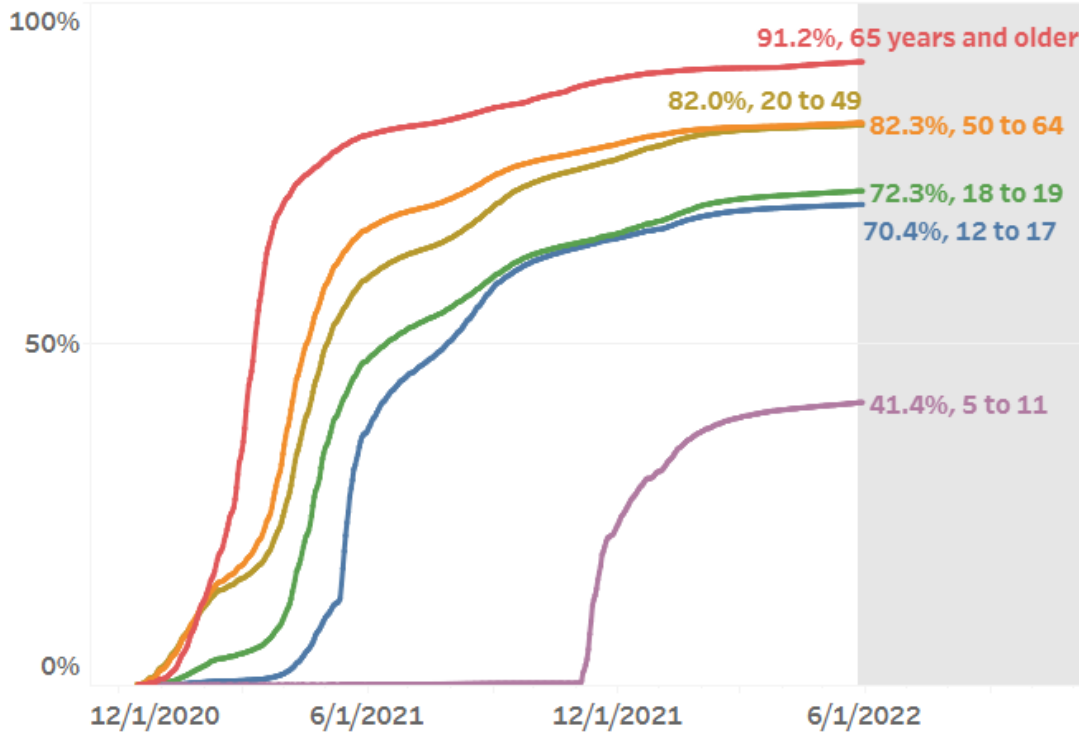
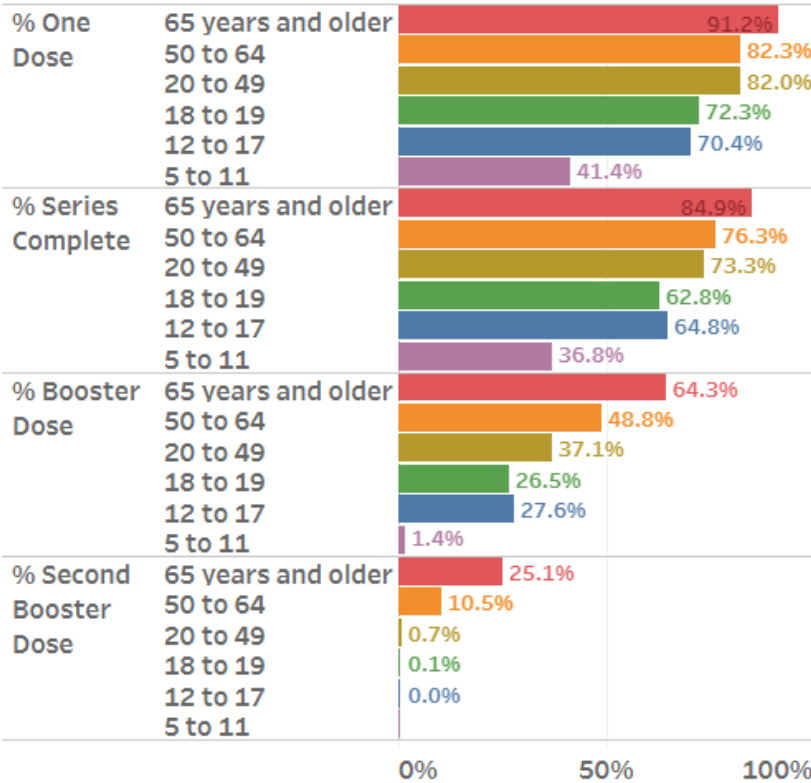
38.7% have received a booster of any COVID-19 vaccine in addition to completing their primary series.



Source:

[https://public.tableau.com/profile/oregon.health.authority.covid.19?utm\\_medium=email&utm\\_source=govdelivery#!/vizhome/OregonCOVID-19VaccineEffortMetrics/StatewideProgress](https://public.tableau.com/profile/oregon.health.authority.covid.19?utm_medium=email&utm_source=govdelivery#!/vizhome/OregonCOVID-19VaccineEffortMetrics/StatewideProgress)

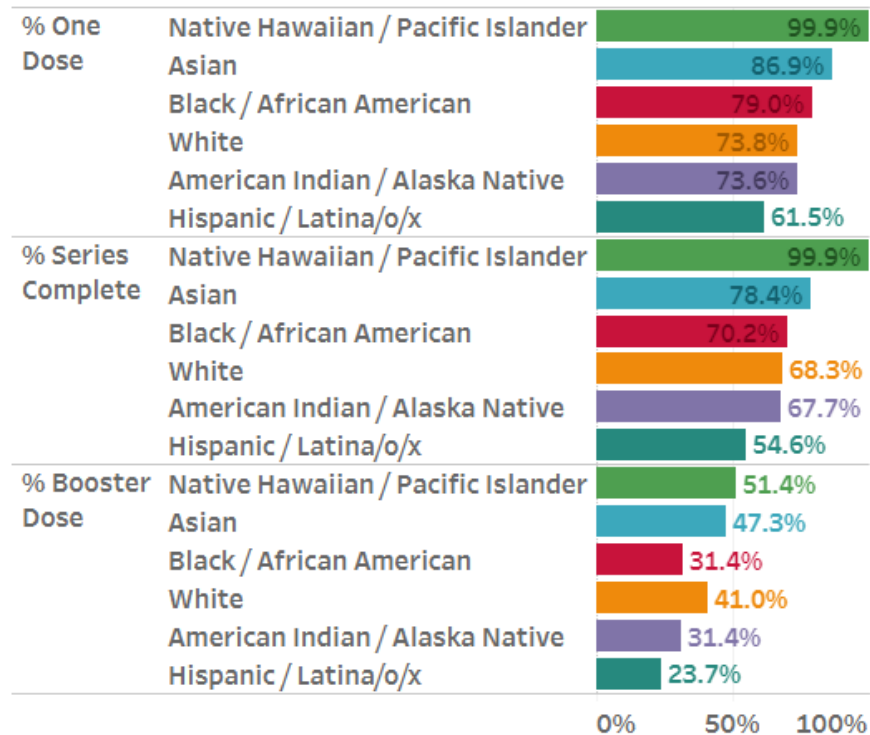
# Vaccines Administered Over Time by Age



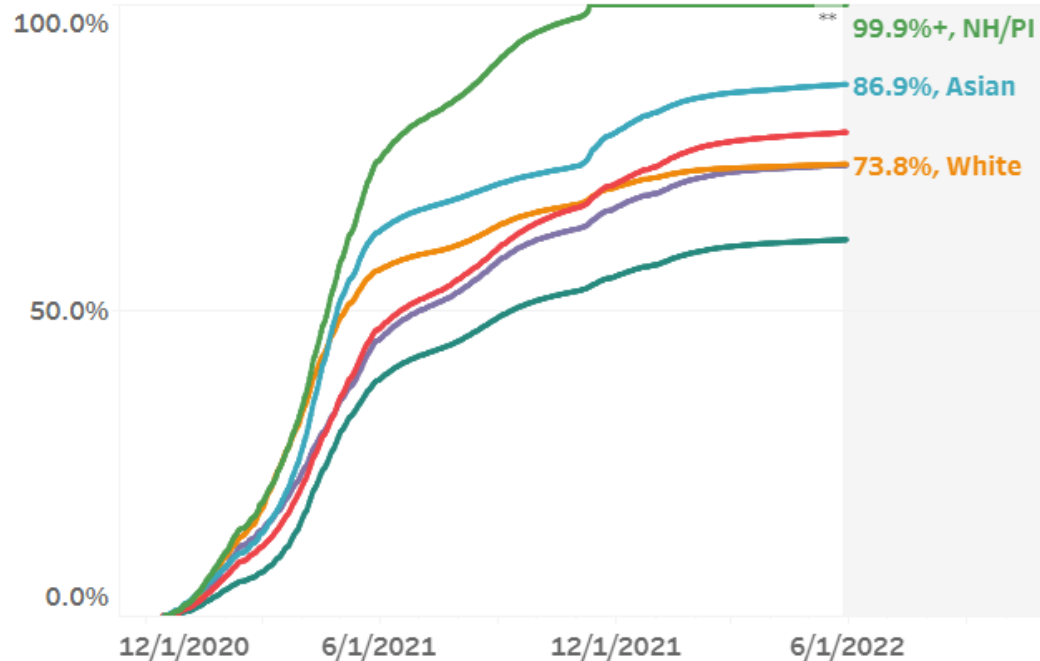
Source:

[https://public.tableau.com/profile/oregon.health.authority.covid.19?utm\\_medium=email&utm\\_source=govdelivery#!/vizhome/OregonCOVID-19VaccineEffortMetrics/StatewideProgress](https://public.tableau.com/profile/oregon.health.authority.covid.19?utm_medium=email&utm_source=govdelivery#!/vizhome/OregonCOVID-19VaccineEffortMetrics/StatewideProgress)

# Vaccines Administered by Race/Ethnicity



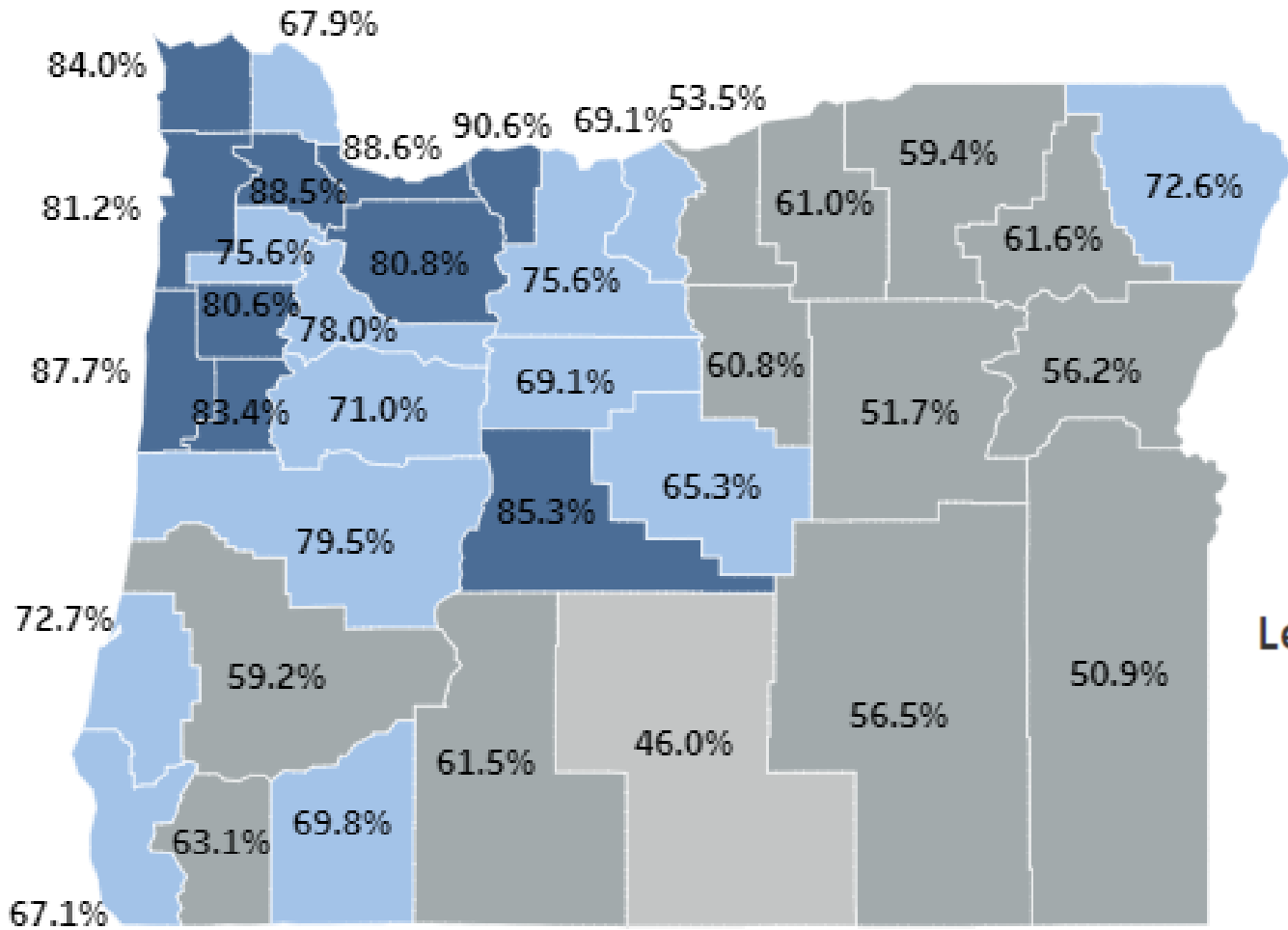
People of all ages



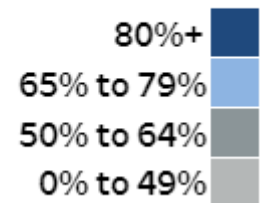
Source:

[https://public.tableau.com/profile/oregon.health.authority.covid.19?utm\\_medium=email&utm\\_source=govdelivery#!/vizhome/OregonCOVID-19VaccineEffortMetrics/StatewideProgress](https://public.tableau.com/profile/oregon.health.authority.covid.19?utm_medium=email&utm_source=govdelivery#!/vizhome/OregonCOVID-19VaccineEffortMetrics/StatewideProgress)

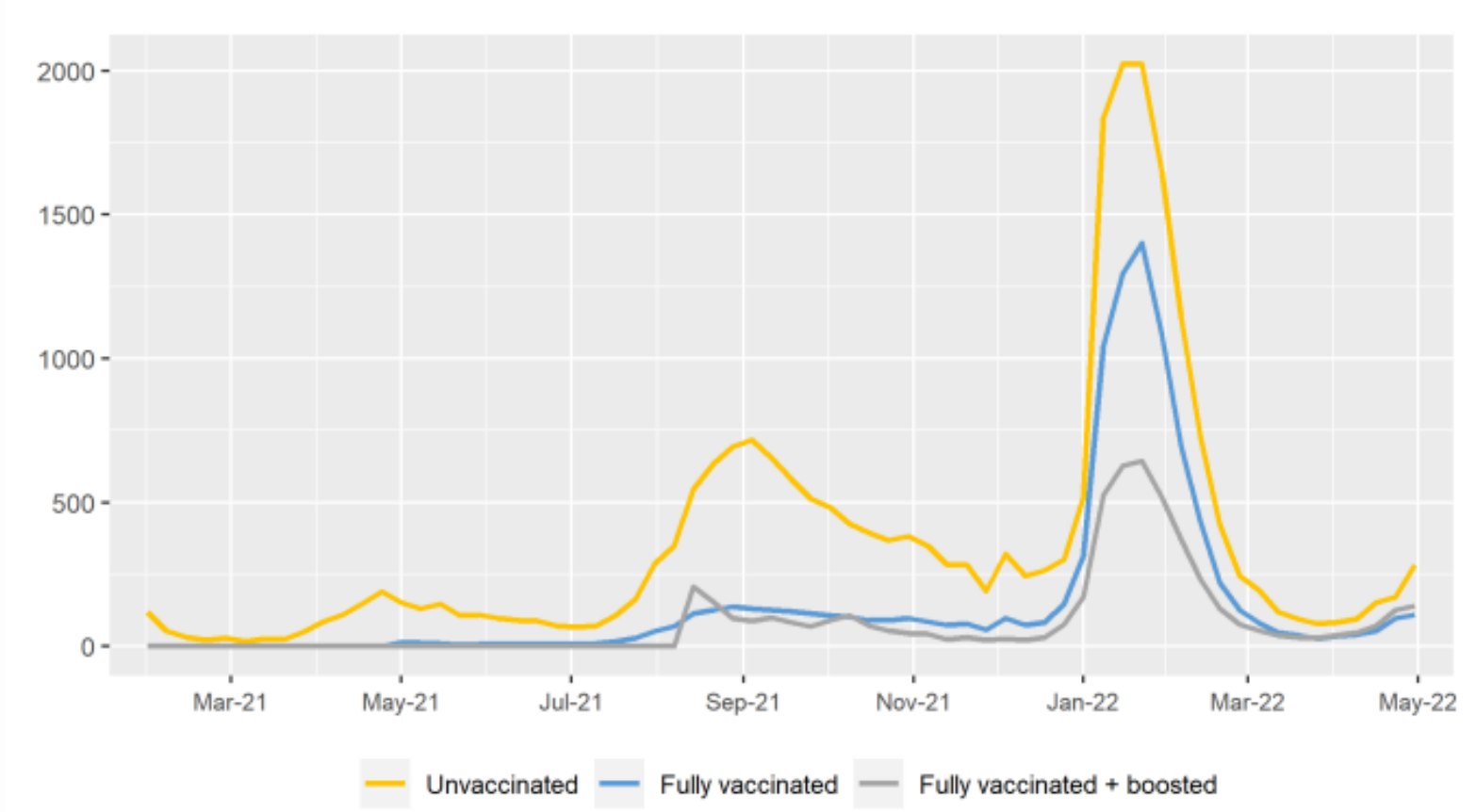
# County Vaccination Rates



Legend



# COVID-19 Cases per 100,000 per Week in Adults, by Vaccination Status





# Thank You!