

Joint Interim Committee On The Interstate 5 Bridge

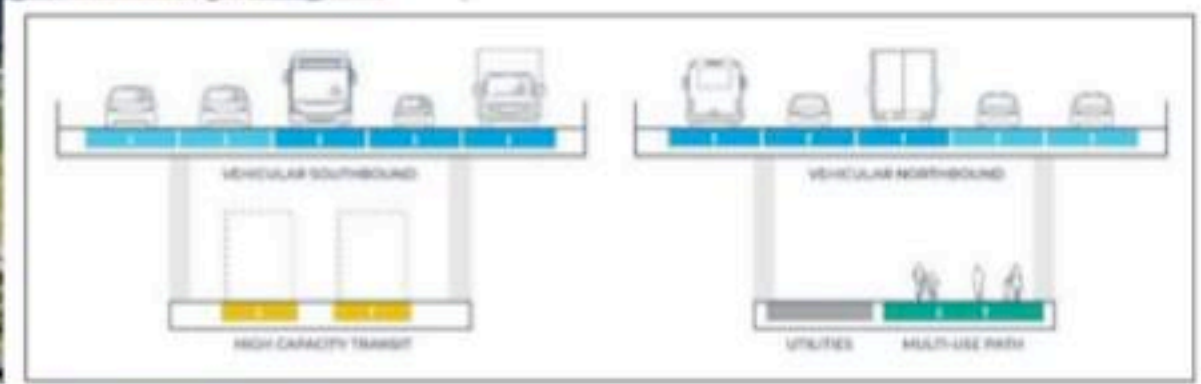
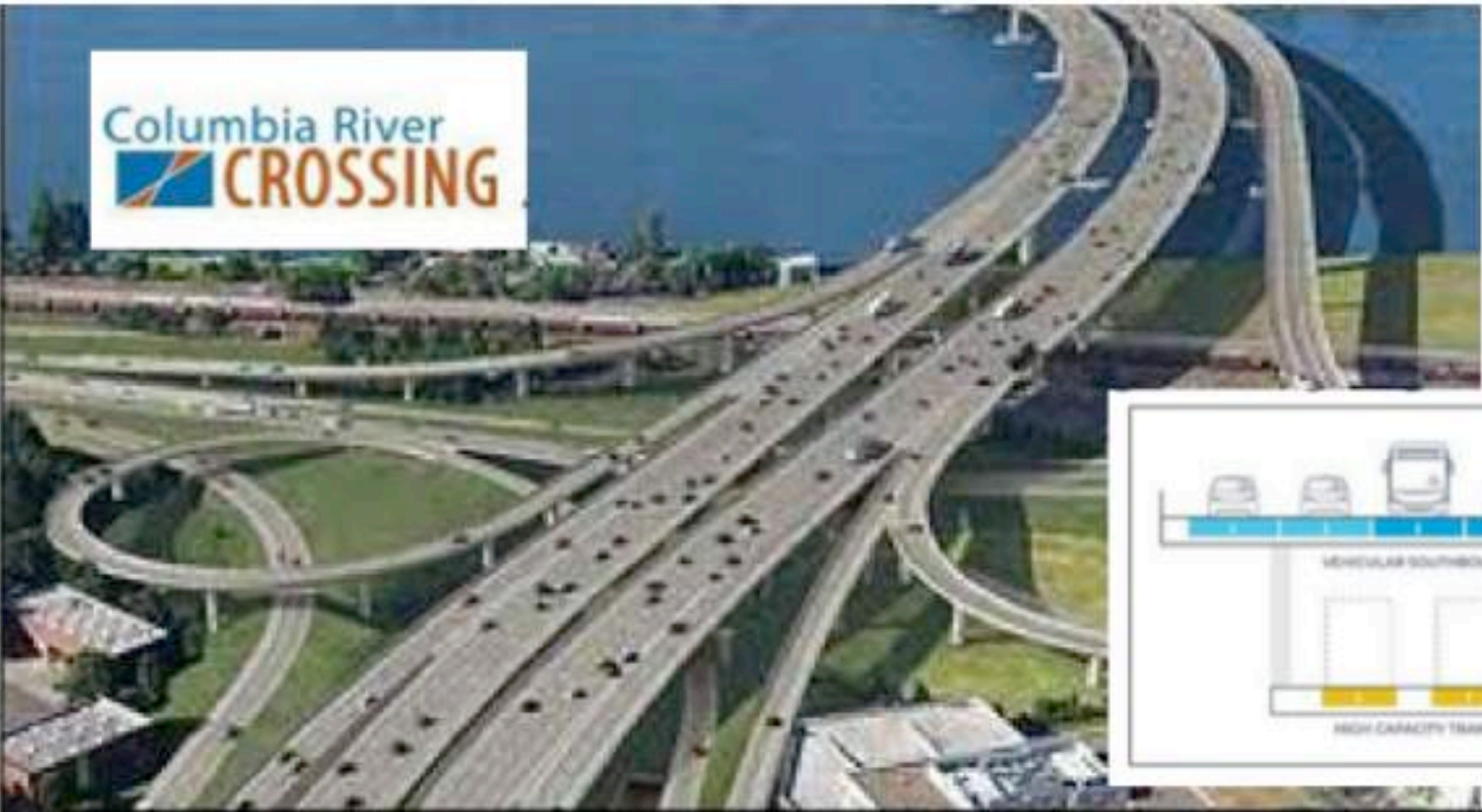
The IBR high bridge options at the Columbia riverbank need to come down 100 feet. This required a massive new \$500 million interchange. **No elevations or grades are identified on the IBR graphics.**

An immersed tunnel will come up at the Columbia riverbank from -20 feet. This will allow it to connect to the current interchange. This will cost less, will be faster to build, and have much less negative impact on Vancouver and the Columbia riverfront.

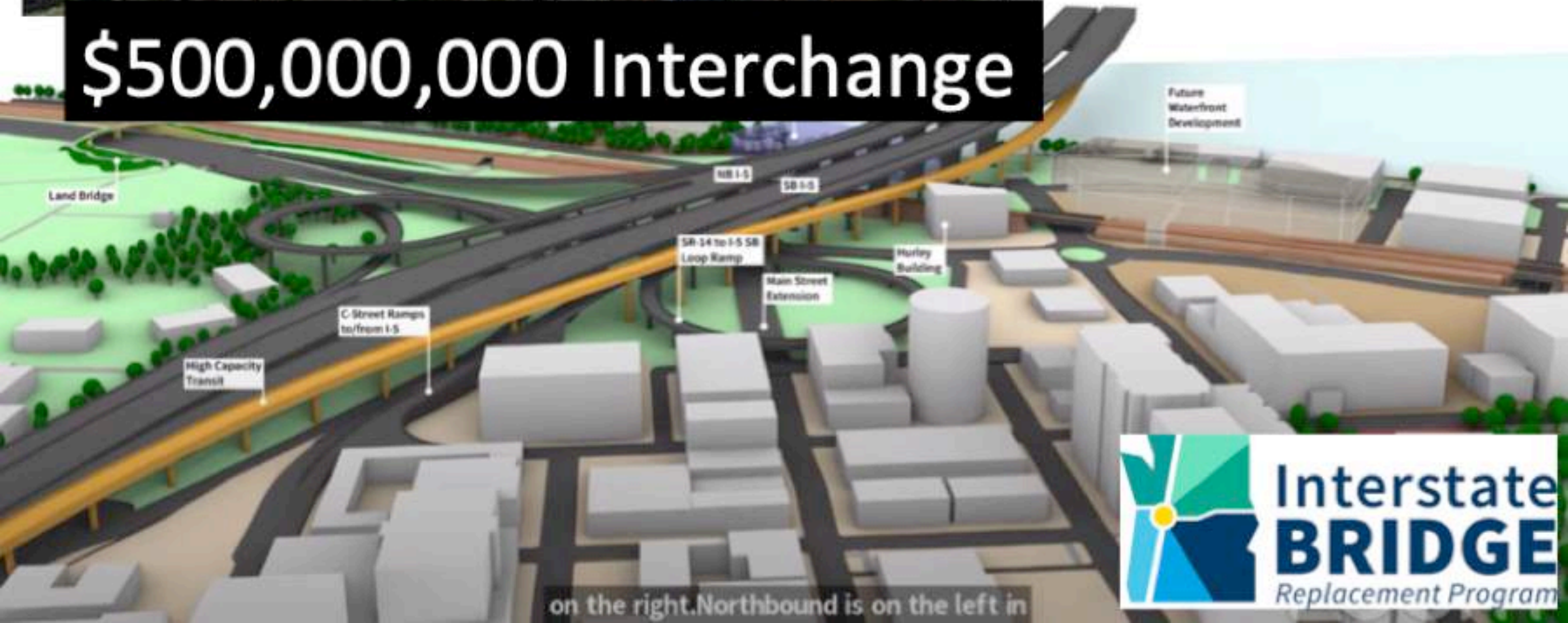
Immersed tunnel example entrances; Hong Kong has 6 immersed tunnels, Sydney has 2 immersed tunnels.

Respectfully
Bob Ortblad MSCE, MBA

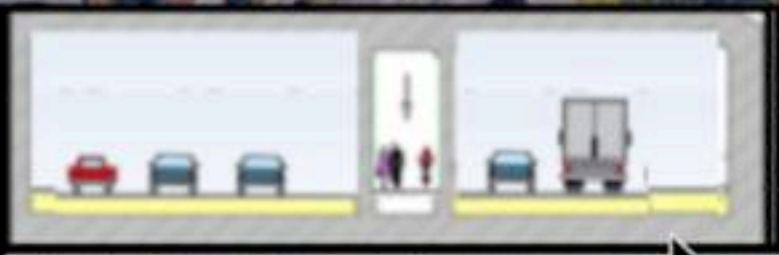
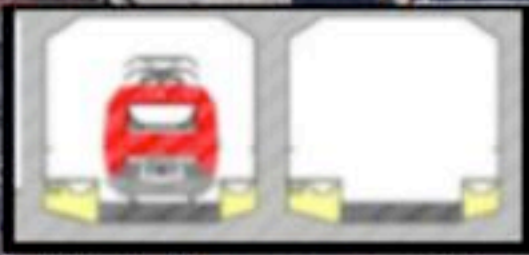
Columbia River
CROSSING



\$500,000,000 Interchange



on the right. Northbound is on the left in



Open Ramp

Cut & Cover

+19'

500'

3.9%

500'



+5 water

-20



Sydney



Hong Kong

Immersed Tunnel Entrances

