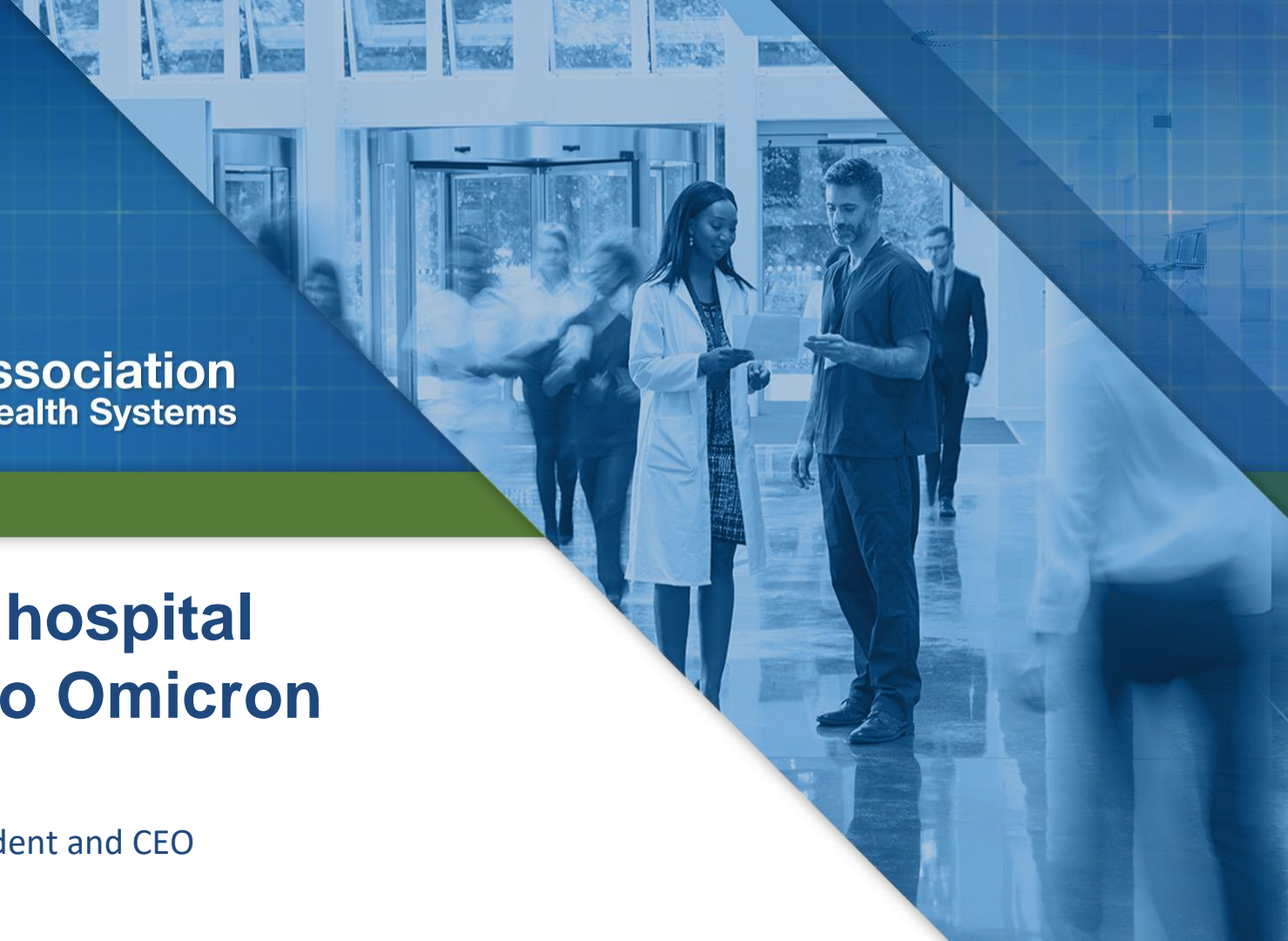




# Update on hospital response to Omicron

January 13, 2022

Becky Hultberg, President and CEO



# Current situation

## Hospital employees overwhelmed by omicron

Oregon announces long-awaited crisis care standards for hospitals as COVID-19 numbers rise

Doctors fear health care collapse amid omicron surge

Many hospitals across the country are in crisis as cases surge and staff

BETH MOLE - 1/10/2022, 3:44 PM

Dec 17, 2021 - Health  
Weight of COVID pushing health care workforce to breaking point

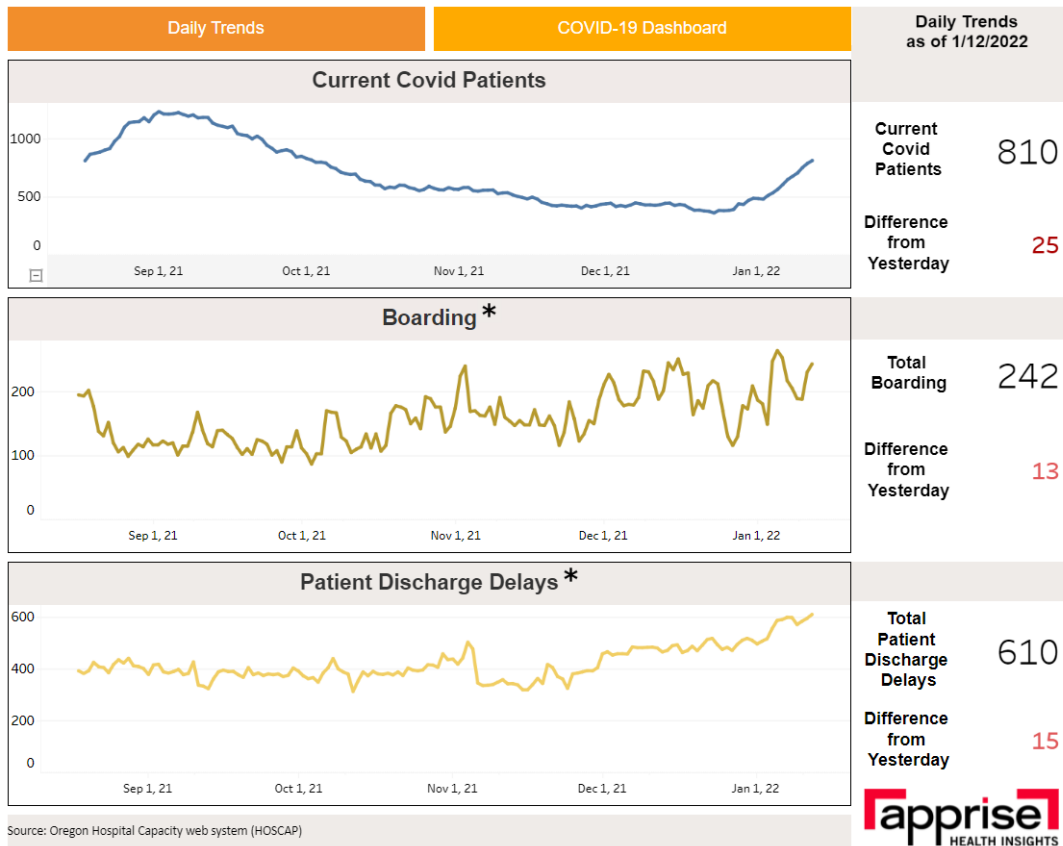


***Doctors and Nurses Are 'Living in a Constant Crisis' as Covid Fills Hospitals***

Hospitalizations across the country have increased 20 percent in two weeks, taxing already exhausted health care workers as the United States confronts the Omicron variant.

# System under stress = impacts on patient care

- Beyond the four walls of the hospital
  - Backstop for public health (i.e. 2021 vaccination campaign)
  - Backstop when other systems fail (behavioral health, state hospital, post-acute care)
- Factors impacting patient care
  - Discharge delays
  - Workforce shortages
  - Growing administrative & regulatory burden
  - Increasing costs creating financial instability



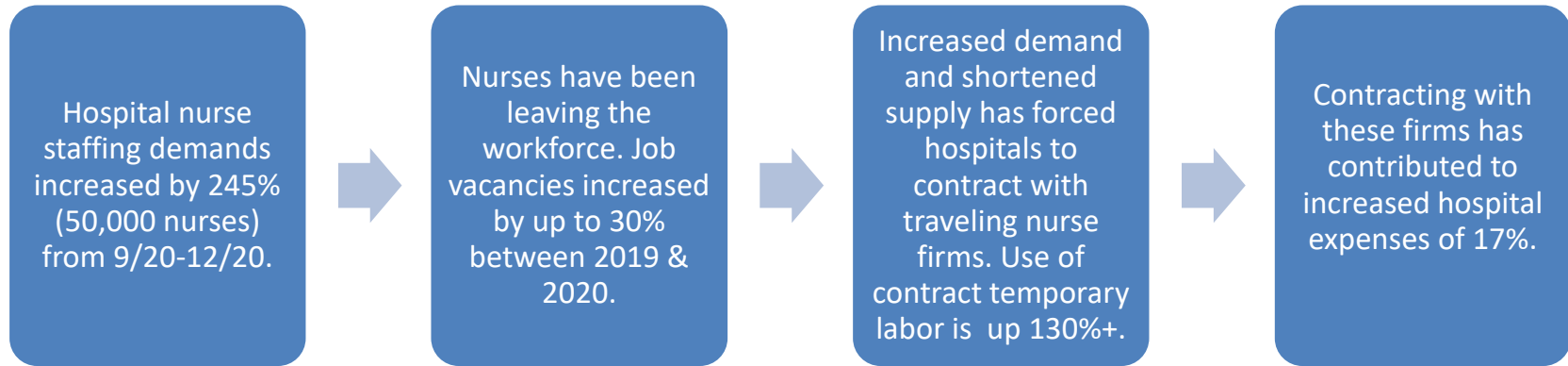
Source: Oregon Hospital Capacity web system (HOSCAP)



## ED boarding & discharge delays:

- EDs on divert
- Beds not available for others in the community who need care
- Patients are in care settings that don't meet their needs
- Patients need support (such as housing, behavioral health)

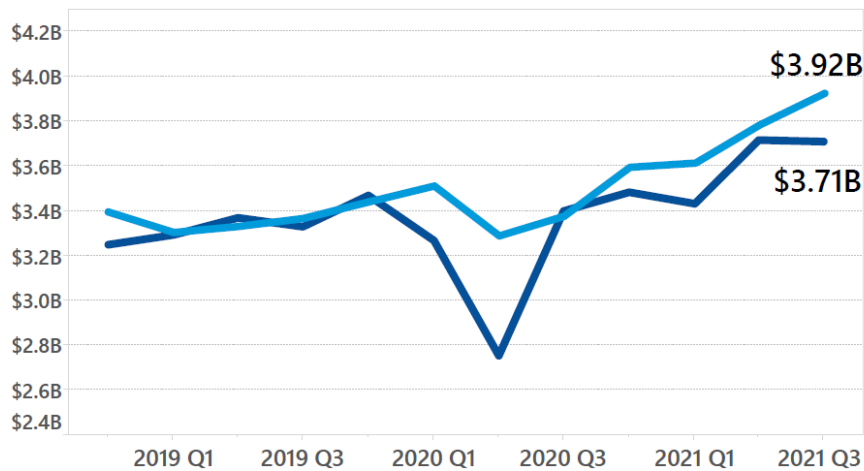
# Health care workforce shortage



# Ability to maintain staffing & services



Net Patient Revenue vs Total Operating Expense





# What can we do?

- Engage with hospital leaders and support their efforts to focus on patient care.
- Promote policy that supports the immediate delivery of care.
- Begin the conversation about how COVID-19 is reshaping health care delivery.
- What are the implications for the future of health care in Oregon?



**Thank You**