

LC 278, LC 276, LC 251: THE PRIVATE FOREST ACCORD

Jason Miner
Office of Governor Kate Brown

Sean Stevens
Oregon Wild

Heath Curtiss
Hampton Lumber

Presentation Map

1/12/22

1. Background and Basics
2. Riparian Areas
3. Steep Slopes and Roads
4. Small Forestland Owners
5. Categories of Funding

Background and Basics

- The Private Forest Accord is an agreement between private parties struck at the direction of the Legislature (SB1602) now converted to three pieces of legislation for the 2022 Session.
- The PFA legislation proposes the most comprehensive update to the Forest Practices Act since 1971 with the goal of providing certainty to the forest industry and aquatic species by qualifying for a federal Habitat Conservation Plan and Incidental Take Permit.

Background and Basics

- The legislative package anticipates that the state will apply for an receive an HCP with a term of 50 years.
- The PFA package includes a longer bill including the forest policy updates (LC 278), a second bill for a small forestland owner tax credit (LC 276), and an update to the harvest tax to partially fund mitigation (LC 251).

Riparian Areas

OREGON FOREST ACCORDS

CURRENT vs. PROPOSED STREAM BUFFER RULES*

NON-FISH STREAM
No-Cut Zones
(perennials that flow into fish streams)

0 ft

← Loggers can cut right down to the edge of non fish streams, impacting fish downstream.

FISH STREAM
No-Cut Zones
(small, medium and large streams)

20+ ft

→ As little as 20 ft on small streams and up to 70ft on some larger streams.

50-75 ft
(for up to 1,150 ft)

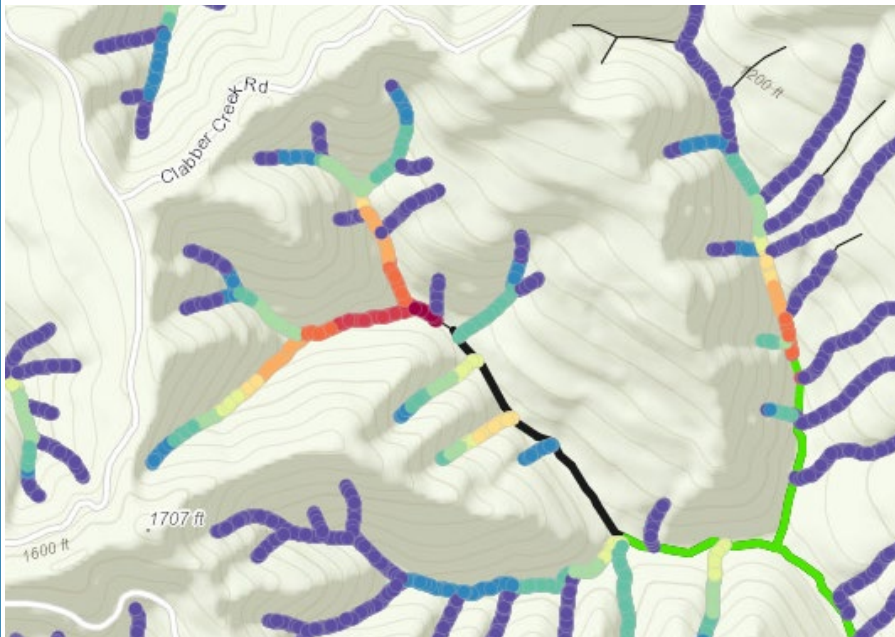
← **25 ft** is required on many seasonal streams (for varying distances)

100-110 ft

* Comparison of current and proposed changes to stream buffers on westside private forests

Steep Slopes

Traversal Paths



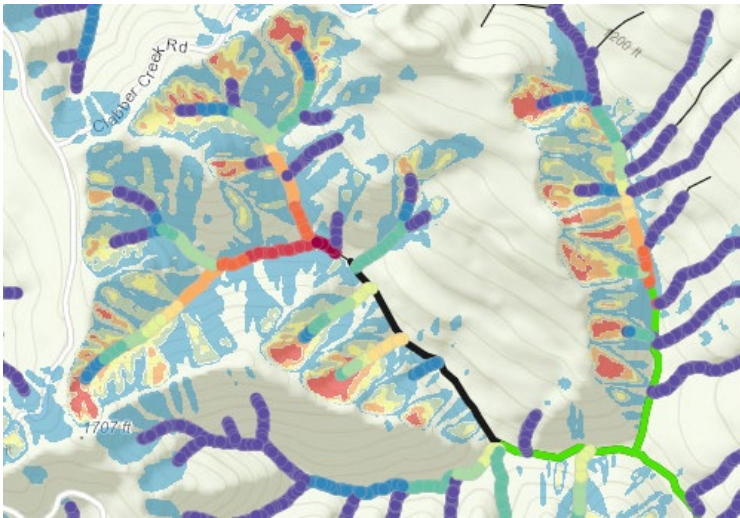
100%



Buffer top 50% (red through yellow), all red otherwise clipped to 1000'

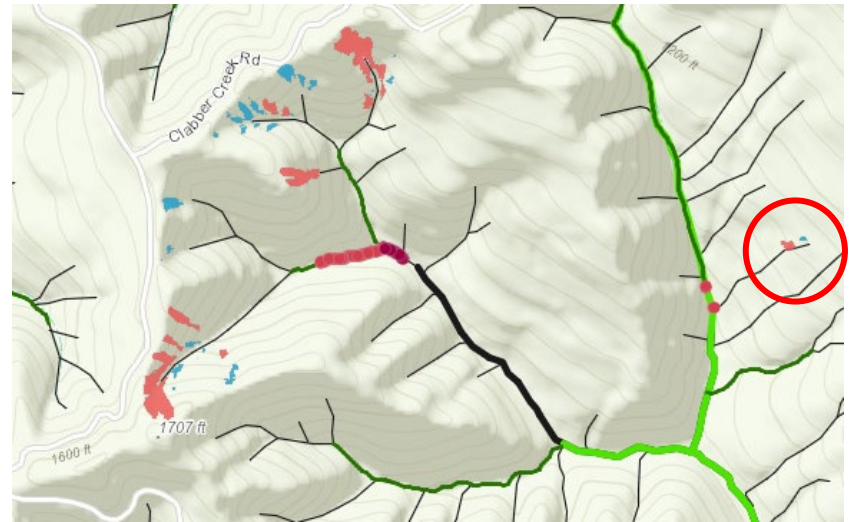
Steep Slopes

Initiation sites – Screens 1 and 2



Initiation sites that make up all the delivered sediment

Screen 1 – Only in basins with a top 20% debris flow traversal path (red)

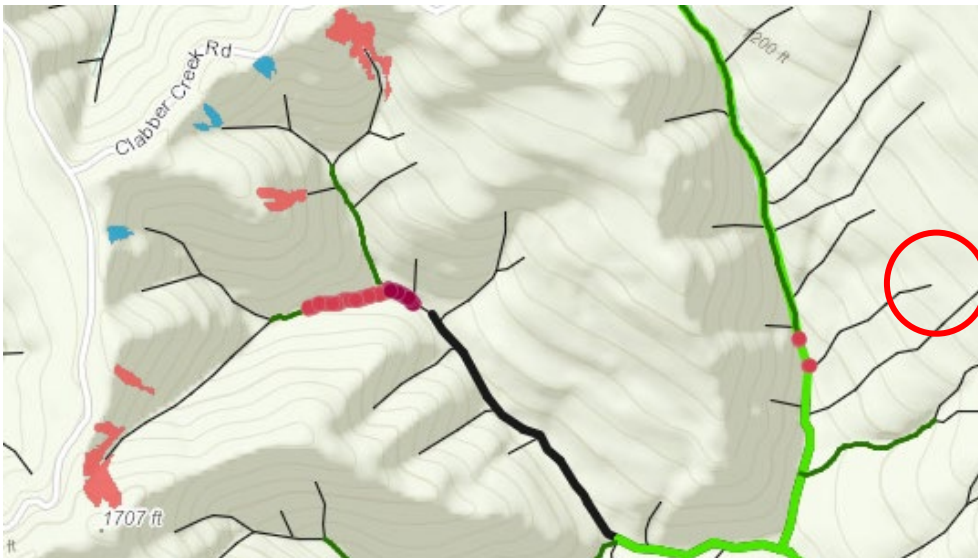


Screen 2 - Only initiation sites that make up the top 33% of sediment (red and blue)

Steep Slopes

Initiation sites - Screens 3 and 4

Screen 3 – Greater than ¼ acre



Screen 4 – Operability

1. Must protect 50% of the polygons
2. Prioritize higher risk (red) polygons
3. Prioritize larger polygons
4. Adjustments to distribution and location for safety concerns
5. Yarding through a buffered higher risk (red) polygon is prohibited

Categories of Funding

1. Application, Implementation, and Data Support for Reforms

Examples:

- a. HCP Application
- b. Fish presence modeling, steep slopes modeling
- c. Compliance and Enforcement
- d. Field Surveying
- e. Small Landowner Support
- f. Roads modeling and evaluation
- g. Adaptive Management support
- h. FERNS upgrade

2. Small Forestland Owner Tax Credit

- a. Value of timber retained over the minimum prescription.
- B. 50 year restriction on harvest.

3. Mitigation Funding

- a. Private Forest Contribution
- b. State Contribution