
COVID-19 Update

Senate Interim Committee on Health Care

January 11, 2021

Patrick Allen
Director

The logo for the Oregon Health Authority. It features the word "Oregon" in a smaller, orange, serif font positioned above the word "Health". "Health" is written in a large, blue, serif font. Below "Health", the word "Authority" is written in a smaller, orange, serif font. A thin blue horizontal line is positioned between "Health" and "Authority".

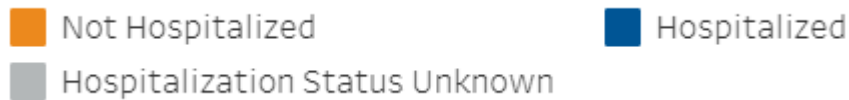
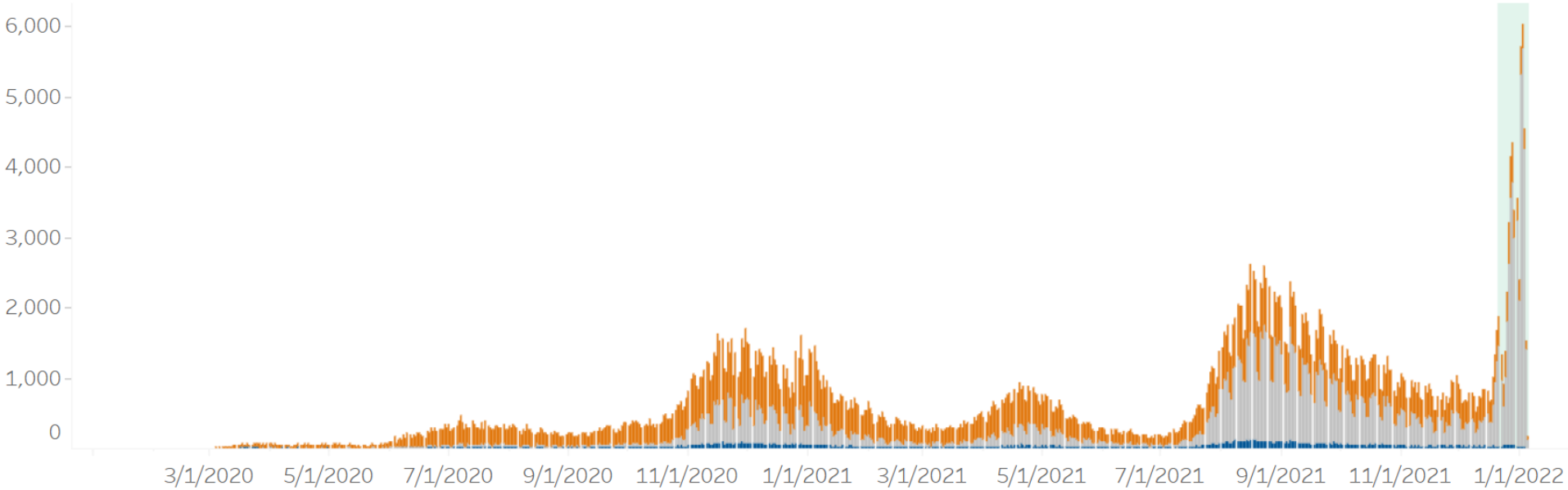
Oregon
Health
Authority

Oregon COVID-19 Cases and Deaths

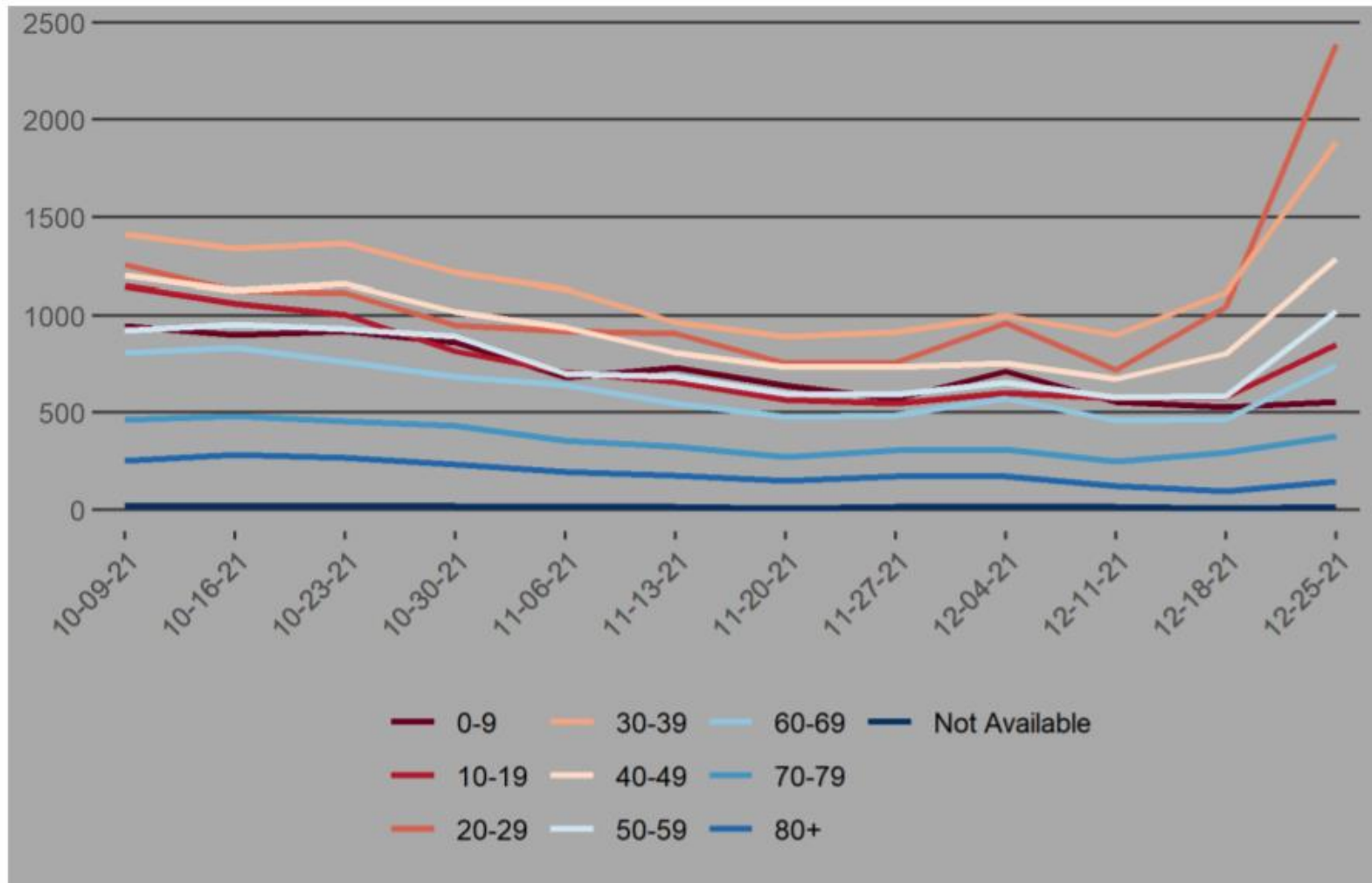
Total	
Cases	
Total	459,700
per 100k	10,899
Rank	2 nd lowest (median: 18,868)
Deaths	
Total	5,761
per 100k	136
Rank	7 th lowest (median: 263)

Last 7 Days	
Cases	
Total	38,437
per 100k	911.3
Rank	11 th lowest (median: 1,073.5)
Deaths	
Total	106
per 100k	2.5
Rank	16 th lowest (median: 3.9)

Oregon's Epi Curve

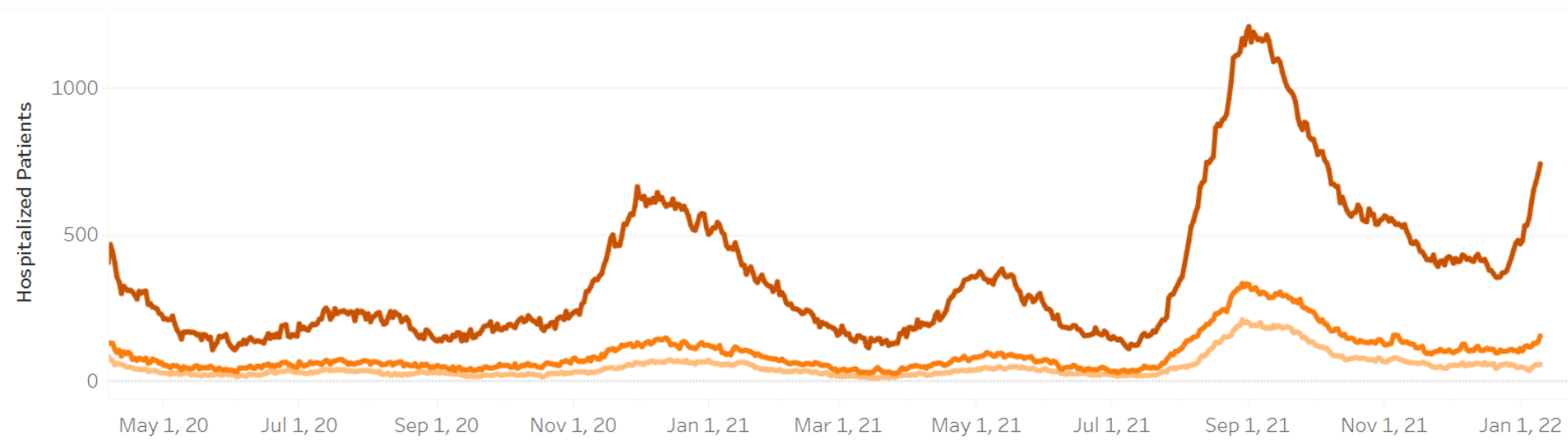


Recent Cases by Age and Week of Onset

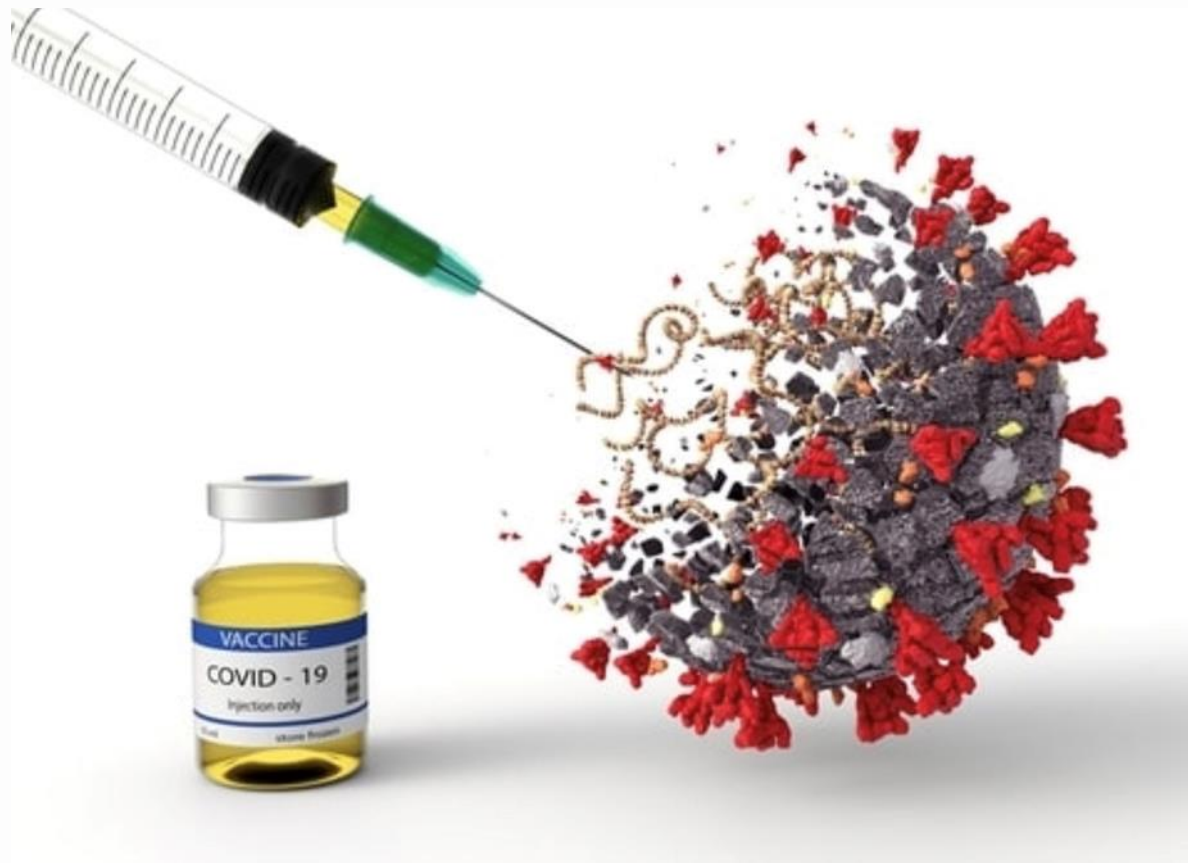


Hospital Trends by Severity

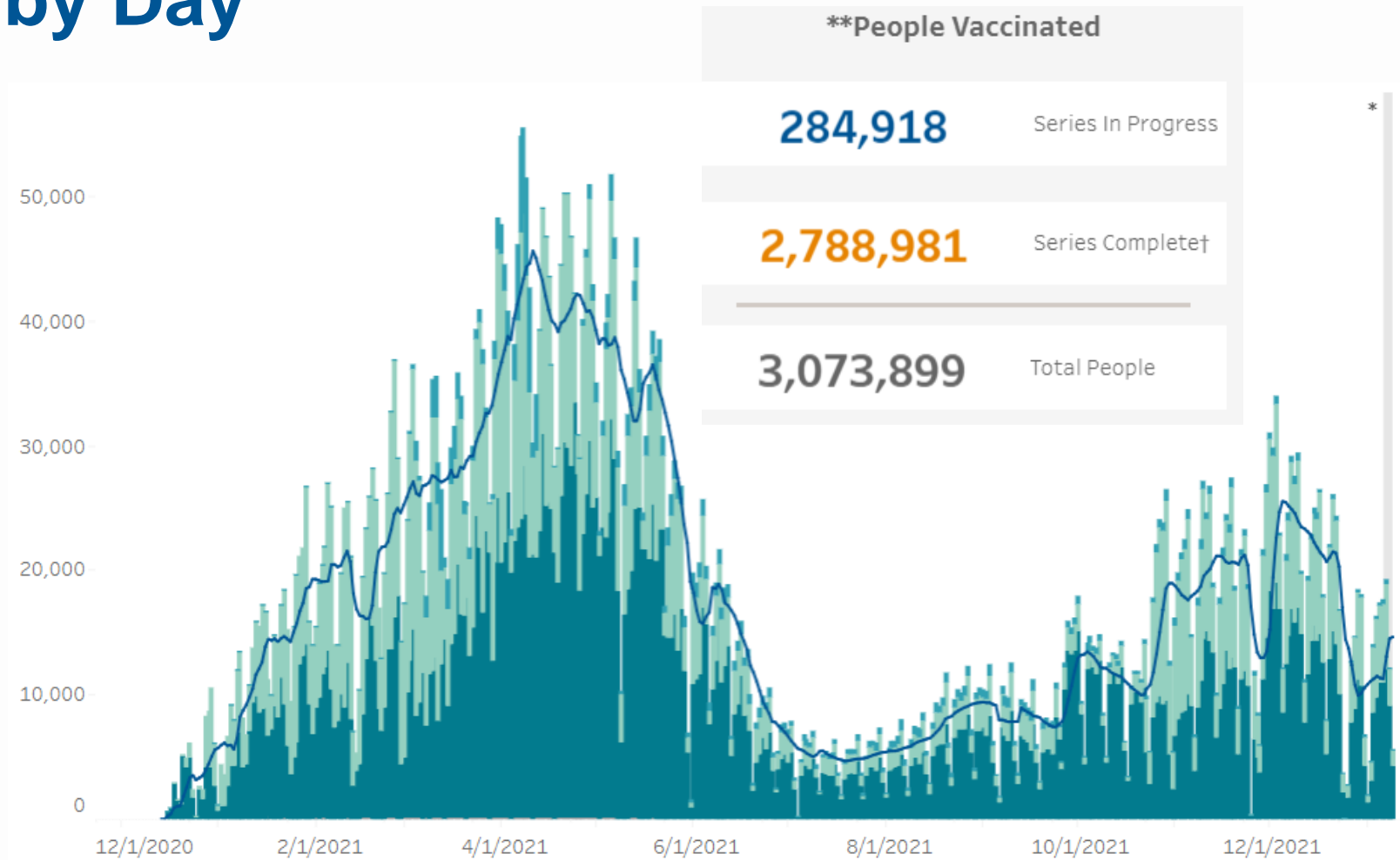
- Total COVID-19 patients
- Total COVID-19 patients in ICU beds
- Total COVID-19 patients on ventilators



COVID-19 Vaccination Update



COVID-19 Vaccine Doses Administered by Day

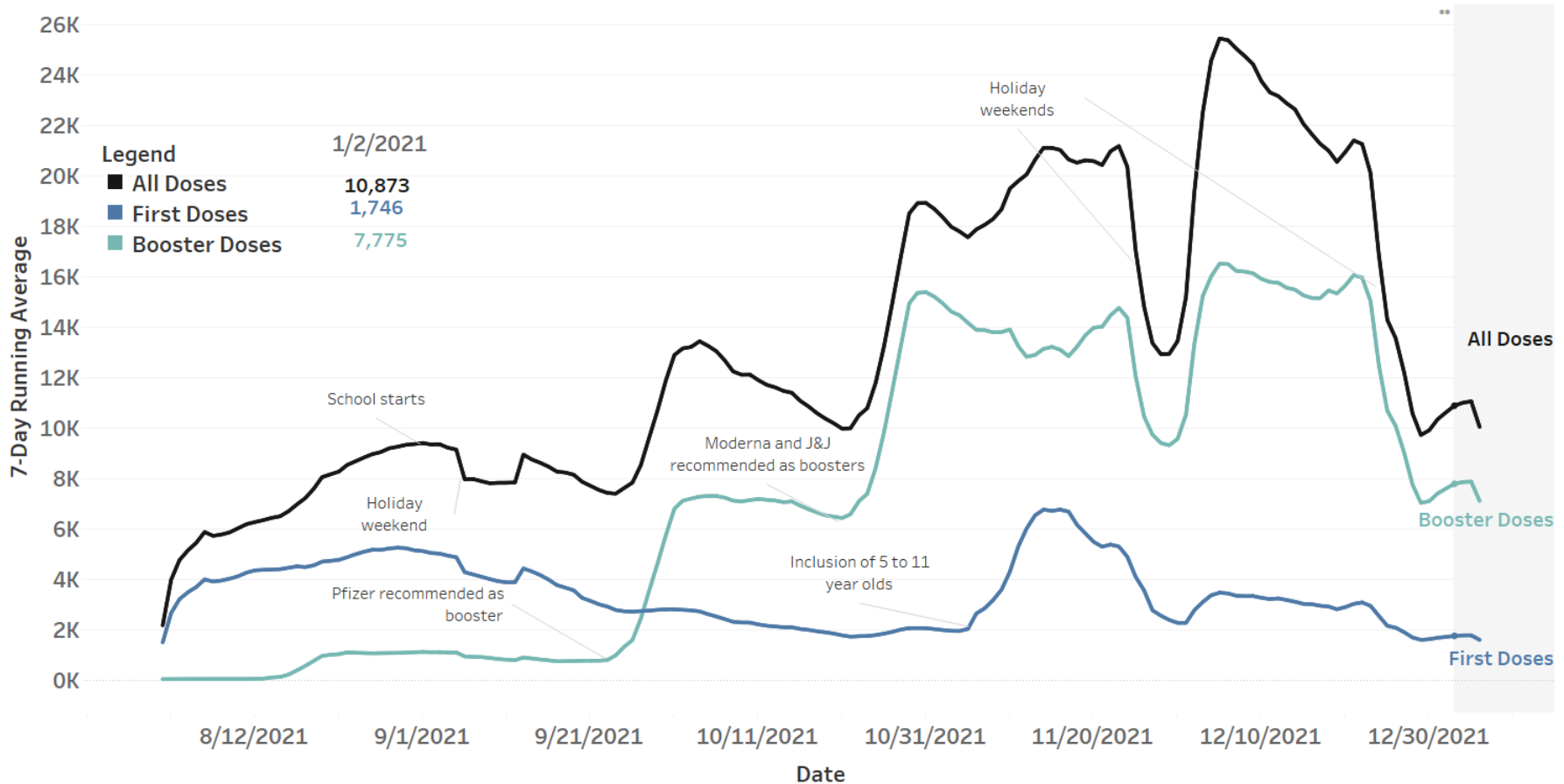


Source:

<https://public.tableau.com/profile/oregon.health.authority.covid.19#!/vizhome/OregonCOVID-19VaccinationTrends/OregonCountyVaccinationTrends>

7-Day Running Averages: Total Doses Administered and First Doses and Extra Doses

ALERT IIS, All Ages



Data current as of 12:01am 1/6/2022

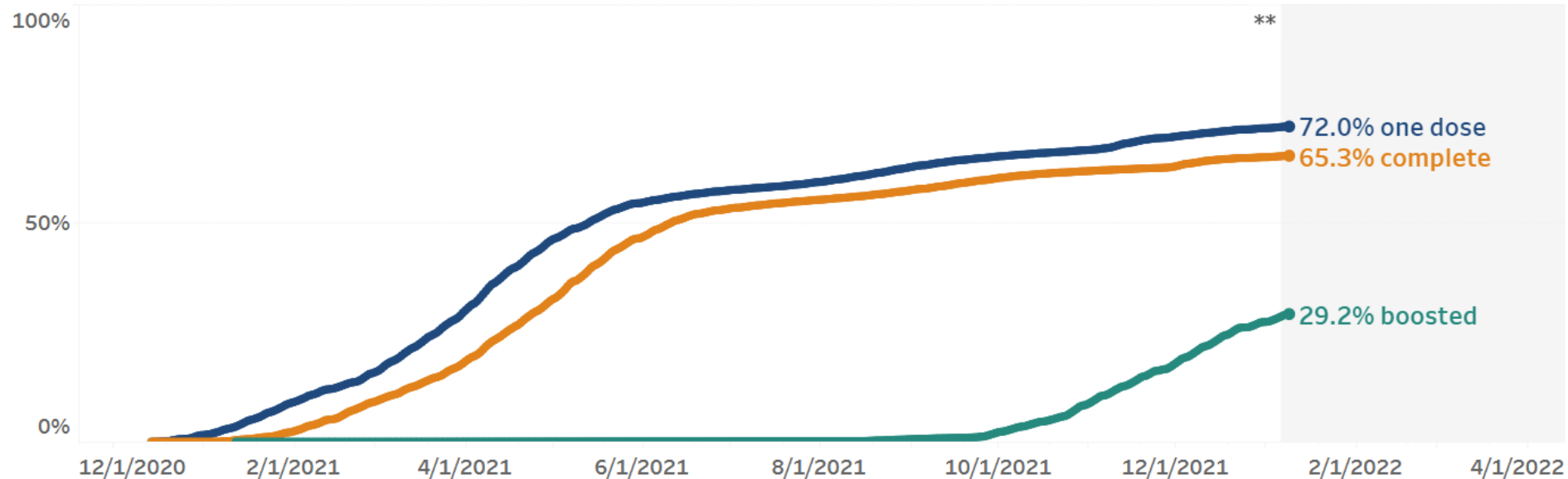
View dose administrations online [here](#) and [here](#)
View averages of people initiated online [here](#)

Percent of People Living in Oregon Vaccinated

72.0% have initiated COVID-19 vaccination and have received at least one dose of any COVID-19 vaccine.*

65.3% have completed their primary series, or have received 1 dose of Johnson & Johnson, 2 doses of Moderna, or 2 doses of Pfizer vaccines.

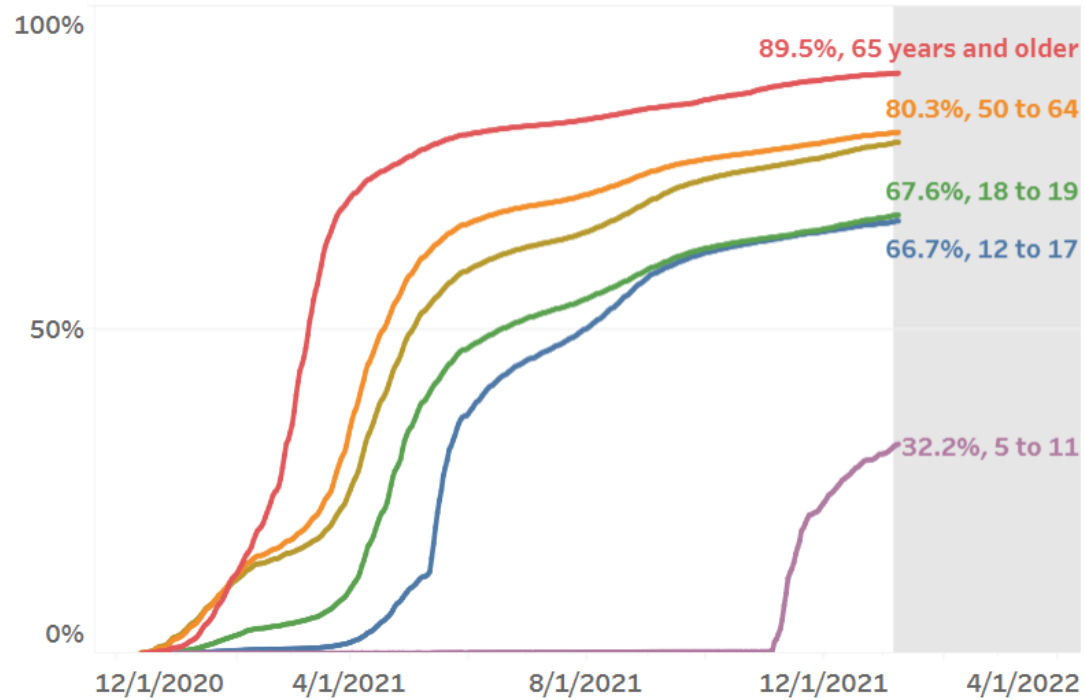
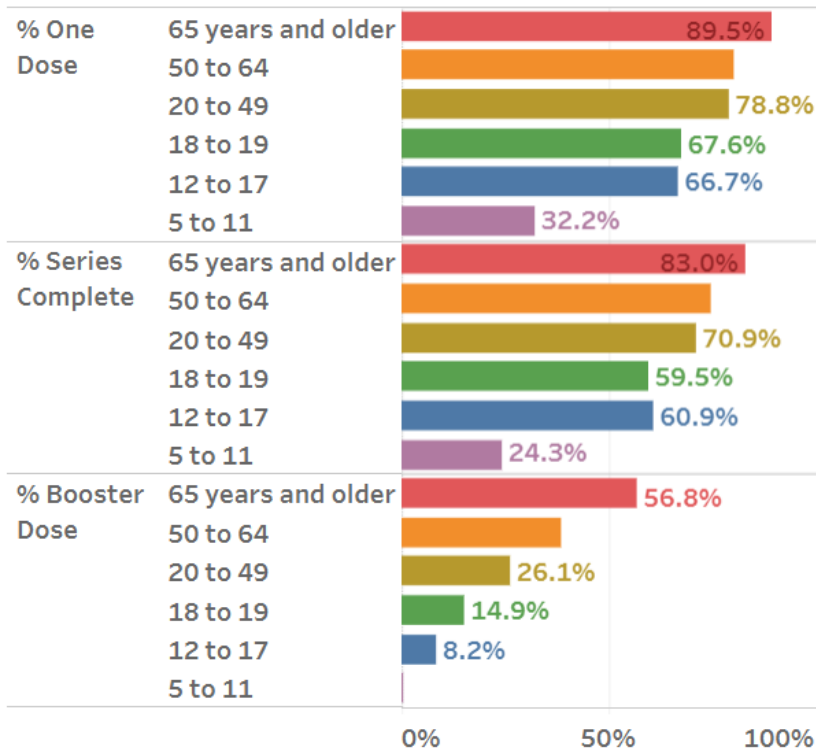
29.2% have received a booster of any COVID-19 vaccine in addition to completing their primary series.



Source:

https://public.tableau.com/profile/oregon.health.authority.covid.19?utm_medium=email&utm_source=govdelivery#!/vizhome/OregonCOVID-19VaccineEffortMetrics/StatewideProgress

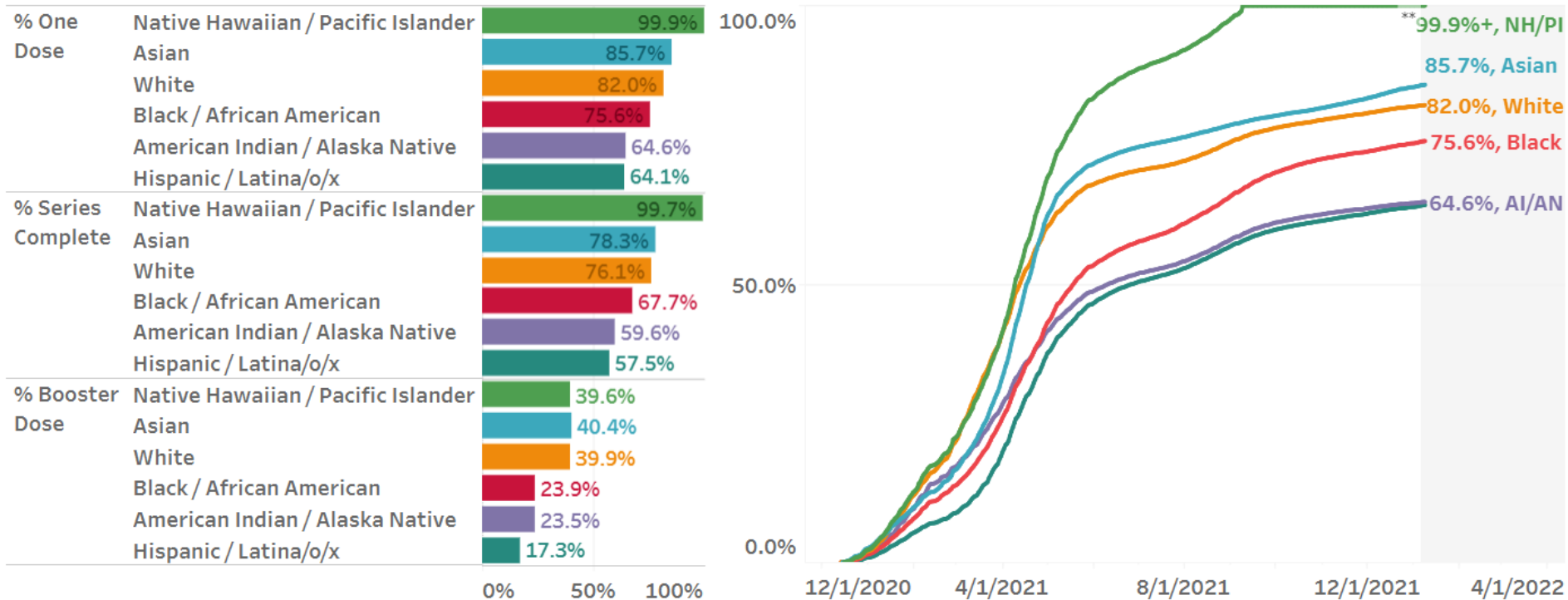
Vaccines Administered Over Time by Age



Source:

https://public.tableau.com/profile/oregon.health.authority.covid.19?utm_medium=email&utm_source=govdelivery#!/vizhome/OregonCOVID-19VaccineEffortMetrics/StatewideProgress

Vaccines Administered by Race/Ethnicity



Source:

https://public.tableau.com/profile/oregon.health.authority.covid.19?utm_medium=email&utm_source=govdelivery#!/vizhome/OregonCOVID-19VaccineEffortMetrics/StatewideProgress



County Vaccination Rates

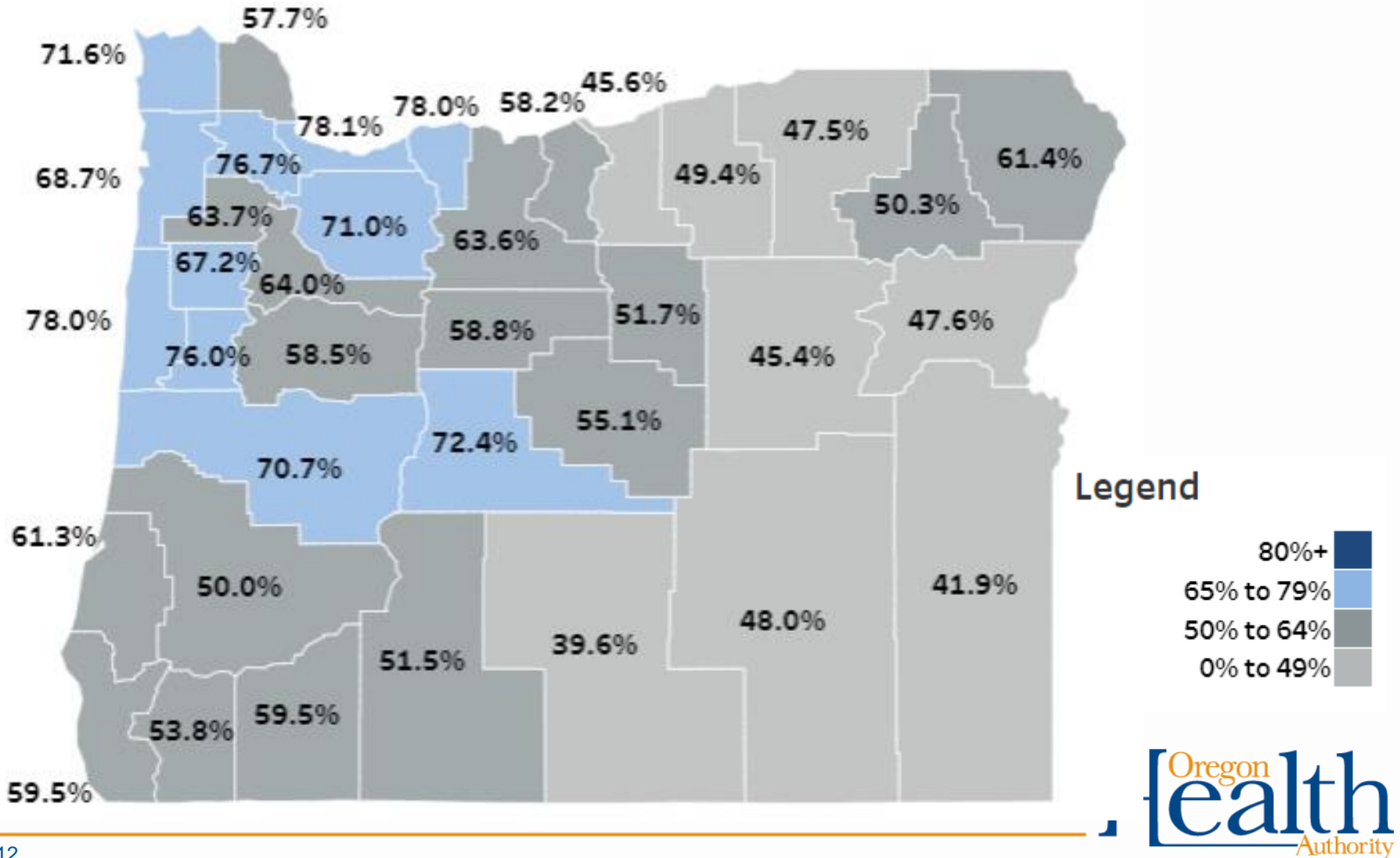
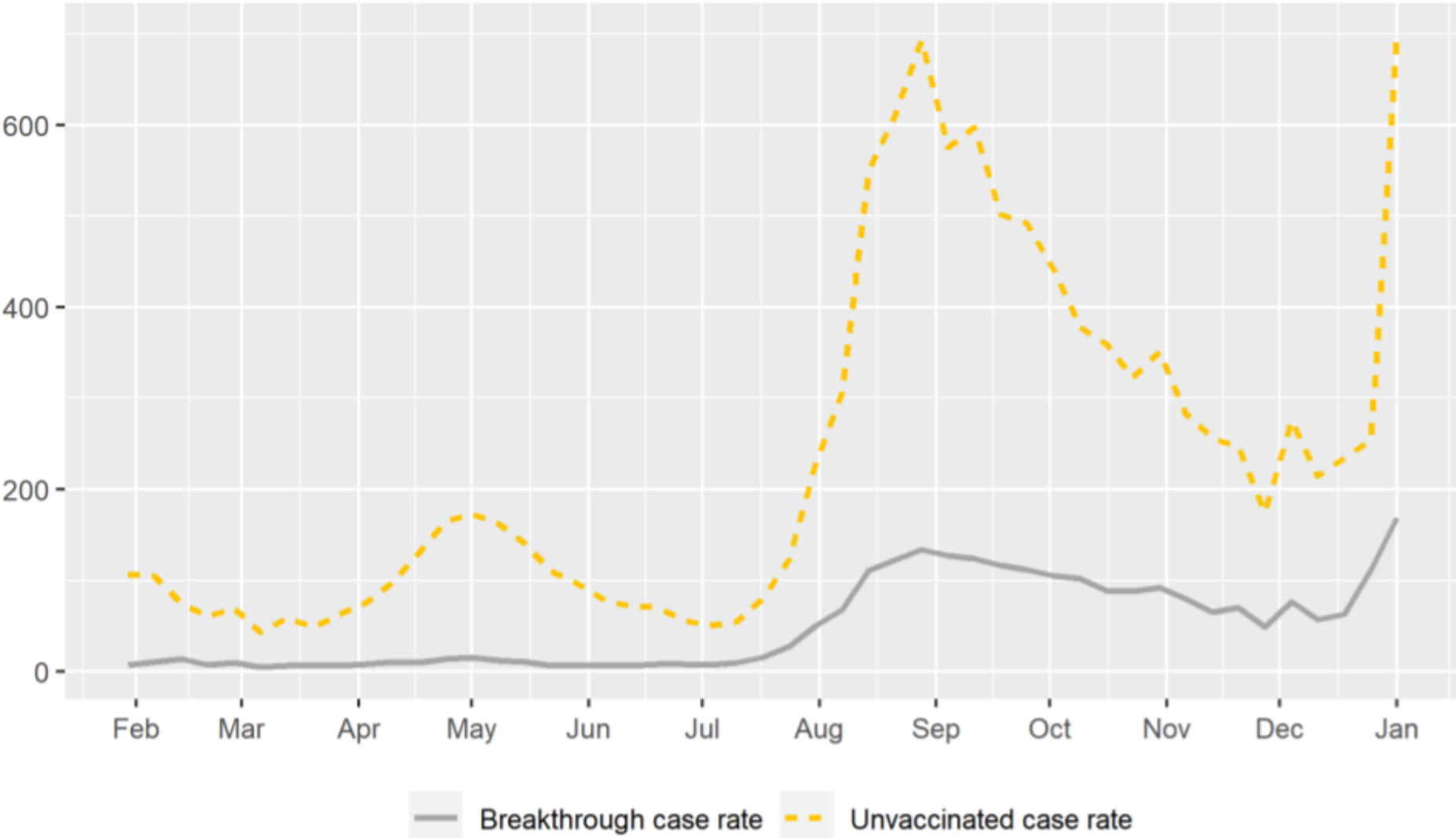
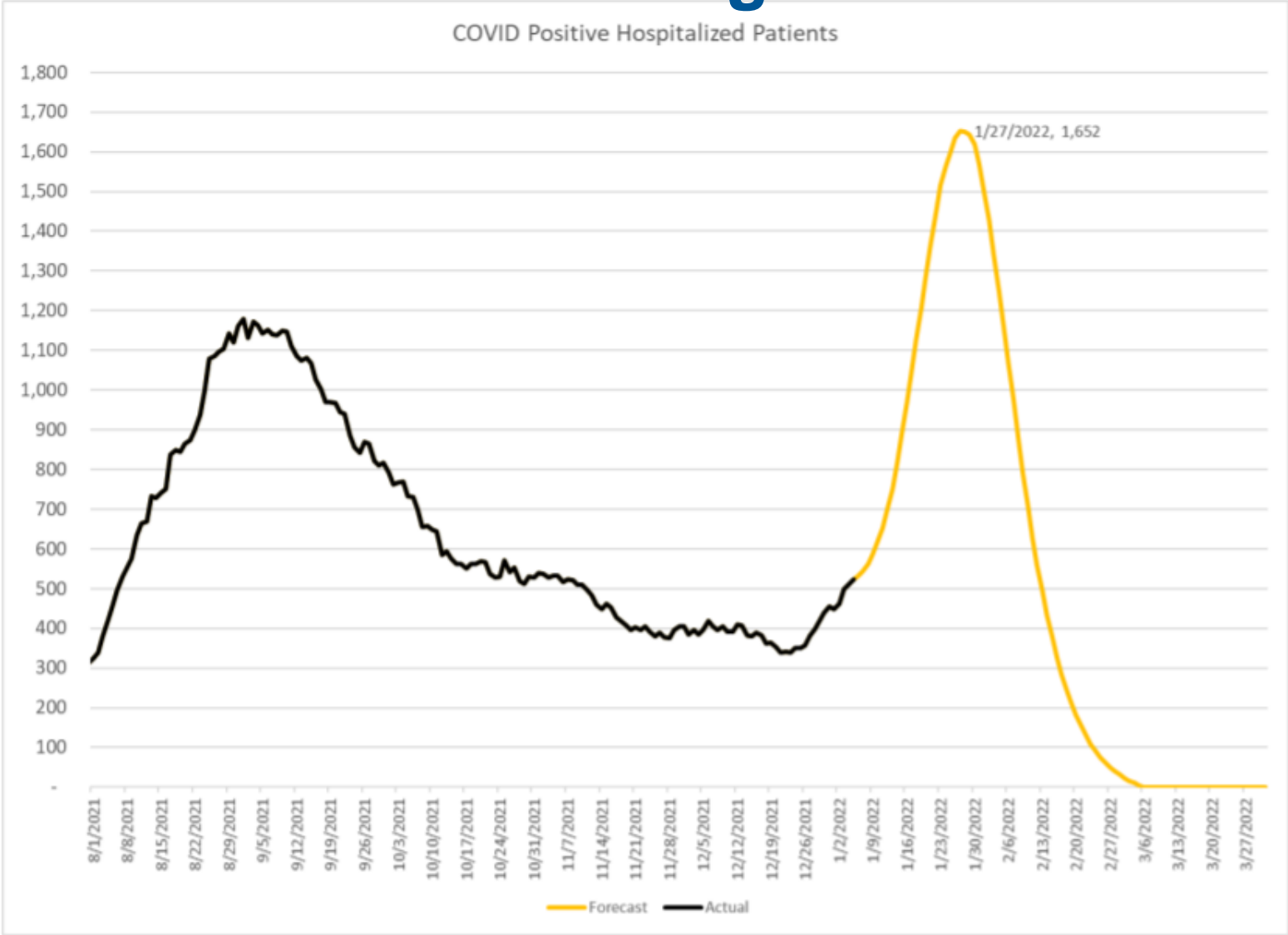


Figure 1. COVID-19 cases per 100,000 per week, by vaccination status

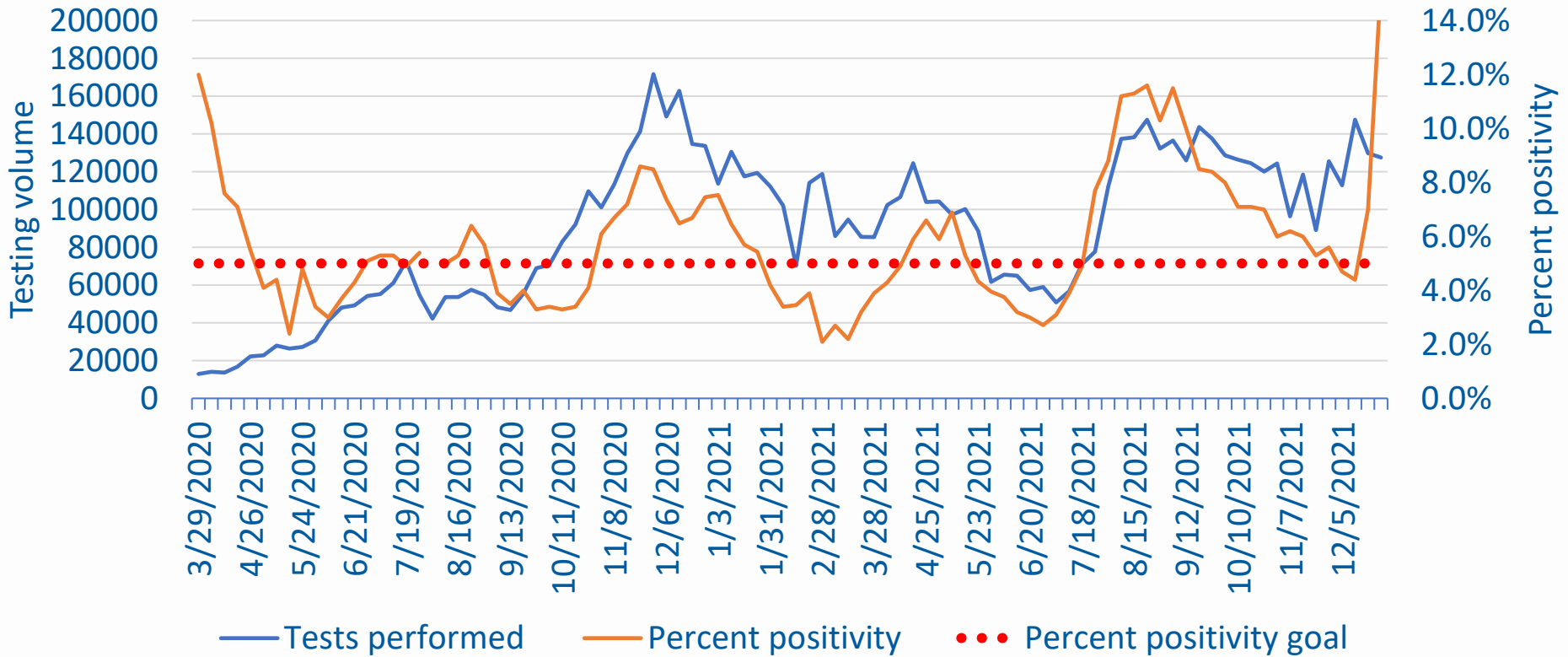


Updated OHSU Modeling



Testing volume and % positivity trends

- From 12/26-1/1, estimated testing volume was stable at **127,000** and percent positivity skyrocketed to **15.4%** (goal $\leq 5\%$)



iHealth self-tests

- 6 million test kits (12 million tests) purchased
- Rapid, point-of-care antigen tests
- Authorized for ages 2-14 with adult supervision; 15+ without
- Instructions in English & Spanish
- No reporting required



Oregon testing strategy for self-tests

- **Goals**
 - **Provide and expand testing access to vulnerable populations** disproportionately affected by COVID-19
 - **Support testing of critical frontline hospital staff**
 - **Expand test-to-stay in K-12 settings**
- Distribution focused on partners serving these populations who do not have access to our current Abbott BinaxNOW supplies under CLIA waiver
 - Homeless service sites
 - Head Start, Preschool Promise and Relief Nurseries
 - CBOs
 - MSFWs
 - LPHAs and tribal communities
 - Frontline hospital workers

Test-to-stay expansion

- Modified quarantine
- 2 tests over 5 days
- Self-tests offer a second option for K-12 settings unable to offer testing through Abbott BinaxNOW

Isolation and Quarantine Updates

- New CDC guidelines published January 4th.
 - Provides some clarification on changes to the five-day isolation and quarantine recommendations announced last week.
 - Masking is heavily promoted in the guidance.
 - The shorter timeframes for the public do not apply to certain high risk settings – carceral settings, healthcare, shelters, and cruise ships, but do apply to K-12
 - We are incorporating the concepts into our guideline updates to be published approx. January 7th
 - The CDC language around testing at the end of isolation remains permissive but not persuasive.
 - We will develop and promote public communications to encourage testing among people at higher risk

Case Investigation and Contact Tracing

- Pivoting away from active phone call outreach to individual cases and contacts to focus on outbreak response in high-risk settings
- Case Investigation will be “opt-in” with an online-first approach
 - Mobile-friendly self-administered survey for cases
 - Statewide Case Support Hotline that supplements local sources of information and referrals. Estimated go-live mid-week next week.
 - Focus on health education, assistance with the survey, and referrals and resources for people who have COVID (including those with at-home tests)
- We are incorporating these concepts into our guideline updates to be published approx. January 7th

Thank You!