



Presentation to the 2021 Senate Human  
Services Committee for November  
Legislative Days

# OFFICE OF DEVELOPMENTAL DISABILITIES SERVICES

Lilia Teninty, ODDS Director

Nov. 17, 2021

# I/DD System Overview

Introduction to ODDS

Vision and Mission

Accessing ODDS Services

Case Management Entities

Individualized Support Plans

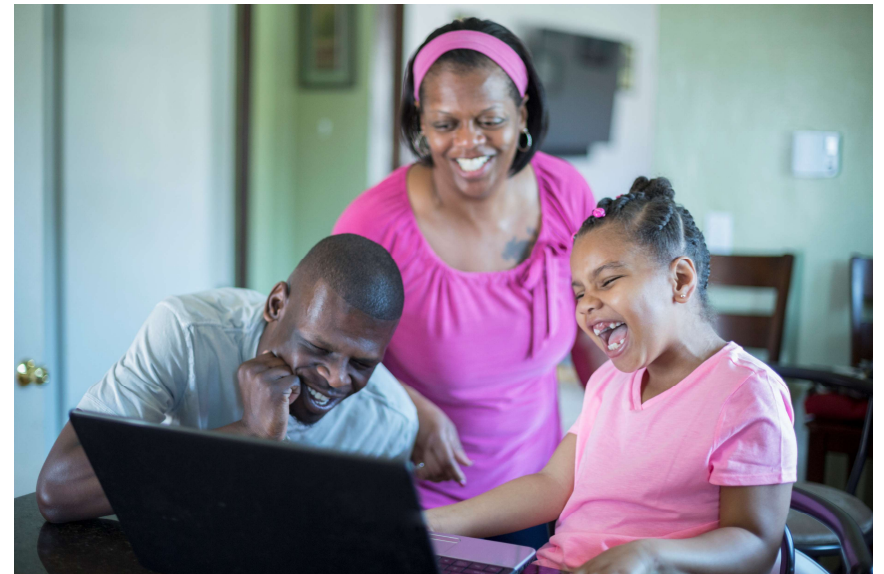
In-Home Services

Questions and Discussion

# Intellectual and Developmental Disabilities (I/DD) System

---

- We support people with I/DD across the lifespan.
- System is built on critical partnerships between the state, local governments, nonprofits, provider agencies, self-advocates and families.
- We serve more than **31,900 people** who have I/DD.
  - 10,000 children
  - 21,900 adults
- In order to be eligible for ODDS services, an individual must:
  - Have an intellectual disability, or
  - Have a developmental disability, and
  - Meet financial eligibility for Medicaid services.



## Our Vision and Mission

---

- **Vision:** People and families access quality supports that are simple to use and responsive to their strengths, needs and choices, while they live and thrive as valued members of their community.
- **Mission:** ODDS, stakeholders and the developmental disabilities community come together to provide services, supports and advocacy to empower Oregonians with intellectual and developmental disabilities to live full lives in their communities.



## Accessing ODDS Services

---



**Community Developmental Disabilities Programs (CDDPs) determine eligibility**

The Eligibility Specialist in a person's CDDP will help with the necessary paperwork and guide a person through the process.

There are CDDPs covering every county in Oregon.

## Case Management Entities (CMEs)

---

### Community Developmental Disabilities Programs (CDDPs)

- 30 CDDPs cover every county in Oregon.
- Services coordinators provide case management services to adults living in home settings, residential facilities and adult foster homes.
- Services coordinators provide case management services to children living in home settings and I/DD foster homes.

### Brokerages

- 14 brokerages statewide.
- Personal agents provide case management services to adults living in home settings.

# Individualized Support Plans

---

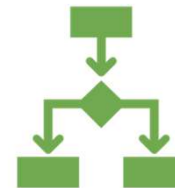
Through an **Individualized Support Plan (ISP)**, a services coordinator or personal agent:



Helps a person identify their desired outcomes and goals.



Assists in addressing assessed needs.



Identifies goals, services, and use of in-home support hours.



Follows up with the person to make sure the ISP is working for them.

# In-Home Services

In-Home Services

In-Home Service Delivery Models

Individual Hires Their Own Personal Support Worker

Public Partnerships (PPL)

Oregon Home Care Commission

Individuals Served by Provider Type

In-Home Service Delivery Models

Agency with Choice



# In-Home Services

---

**In-home services fall under the category of Community Living Supports (CLS) for adults and children living in their own or family home.**

- Everyday activities such as bathing, dressing, shopping, managing money, meal planning and cooking
- Support interacting with peers and making connections in the community
- Help with skills development and promoting independence
- Person chooses Personal Support Workers (PSW), Direct Support Professionals (DSP) or both



# In-Home Service Delivery Models

---

Currently, there are two defined service options for in-home services in Oregon.



Individual hires a Personal Support Worker (PSW) who is:

- Hired by an Employer of Record (which could be a supported person or designee).
- Represented by SEIU.
- Paid at a rate the union bargains.
- Enrolled and trained by the Oregon Home Care Commission.



Individual selects a Provider Agency that:

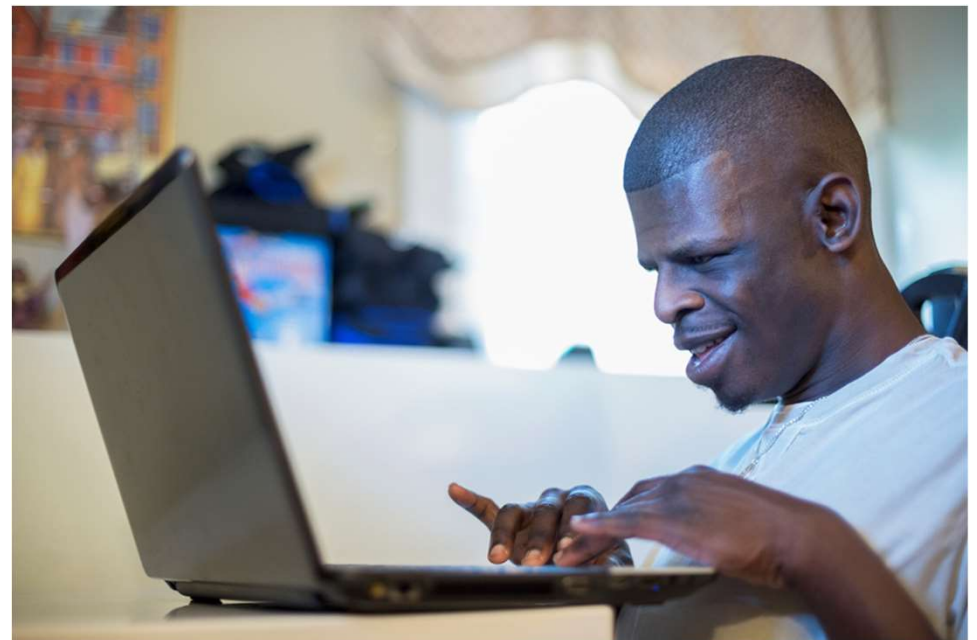
- Employs, hires and manages Direct Support Professionals (DSPs).
- Trains DSPs based on ODDS and state requirements.
- Works with ODDS who pays provider agencies for services based on rate models.
- Determines DSP wages and benefits.
- Operate a variety of business models.

# Individual Hires Their Own Personal Support Worker

---

**An individual or their designee becomes the employer of record (EOR).**

- Applies to the IRS for an Employer Identification Number (EIN)
- Assumes employer responsibility
- Works with a case manager to create a service agreement that describes PSW job duties and services provided
- Recruits and hires qualified PSWs
- Supervises and trains PSWs
- Schedules work of PSWs
- Tracks hours worked and verifies the authorized hours completed by PSWs
- Manages performance and gives feedback to PSWs
- Terminates PSWs, if necessary



## Public Partnerships (PPL)

---

**ODDS contracts with PPLs to manage payroll and other financial services for Personal Support Workers (PSWs) and their employers.**

- Enrollment support
  - Helps individuals and employers enroll in Oregon Financial Management Agent Services (OR FMAS) using prefilled forms
  - Helps Personal Support Workers enroll in OR FMAS using prefilled forms
- Payroll support
  - Runs payroll for PSWs using funds allocated by the legislature for I/DD services
- Tax filing support
  - Handles all employment-related tax requirements for participants



# Oregon Home Care Commission

**The Oregon Home Care Commission supports homecare workers (HCWs), PSWs and individuals receiving services/employers.**

- Provides a statewide registry of HCWs and PSWs
- Provides training opportunities
- Serves as the joint employer for collective bargaining for HCWs and PSWs



# In-Home Service Delivery Models

---

ODDS is planning to define a third service delivery option.



Personal Support Worker  
(PSW)

## **Agency with Choice**

This is a service delivery option in which individuals with I/DD or their designee can select and direct their worker without being the formal employer of record.

Provider Agency

## Agency with Choice

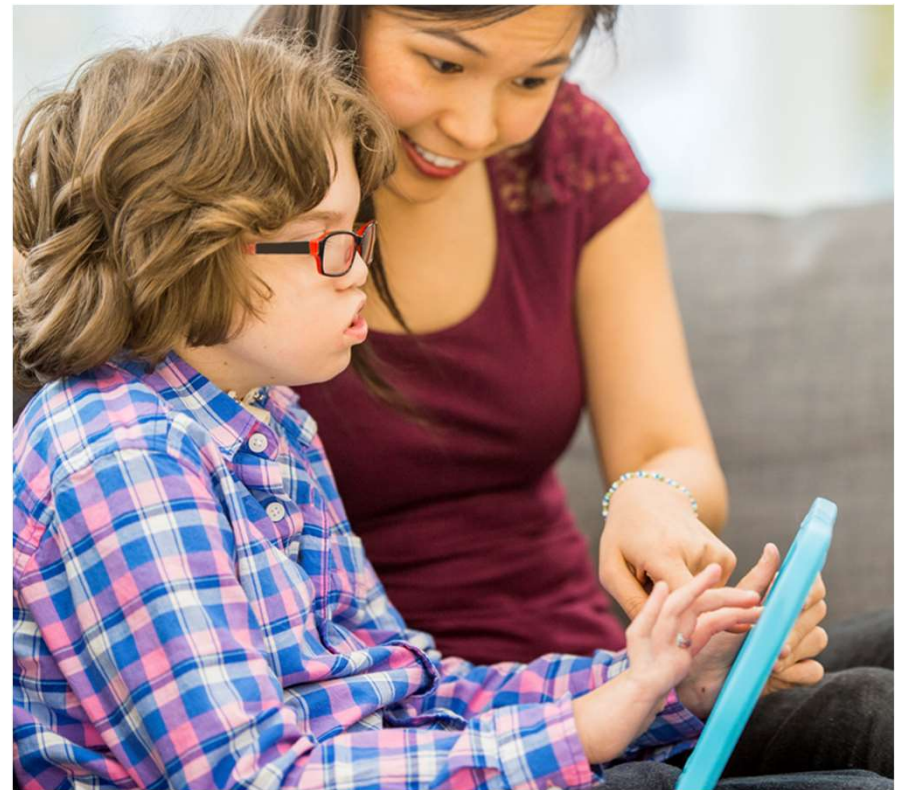
---

**The Agency with Choice is the employer of the worker and provides administrative and employer-related support.**

- Ensures the worker meets minimum qualifications and completes criminal background check
- Provides required training to the worker
- Handles the employment-related paperwork
- Responsible for finances, payroll, billing and reports

**The individual** recruits and selects the worker they want.

**The Agency with Choice** completes the hiring process.





# Questions?

Email us: [DD.DirectorsOffice@dhsosha.state.or.us](mailto:DD.DirectorsOffice@dhsosha.state.or.us)

Sign up for updates:

[https://public.govdelivery.com/accounts/ORDHS/subscribe/new?topic\\_id=ORDHS\\_616](https://public.govdelivery.com/accounts/ORDHS/subscribe/new?topic_id=ORDHS_616)