
COVID-19 Update

*House Interim Special
Committee on COVID-19 Response*

November 17, 2021

Patrick Allen
Director

The logo for the Oregon Health Authority. It features the word "Oregon" in a smaller, orange, serif font above the word "Health" in a large, blue, serif font. Below "Health" is the word "Authority" in a smaller, orange, serif font. A thin blue horizontal line is positioned between "Health" and "Authority".

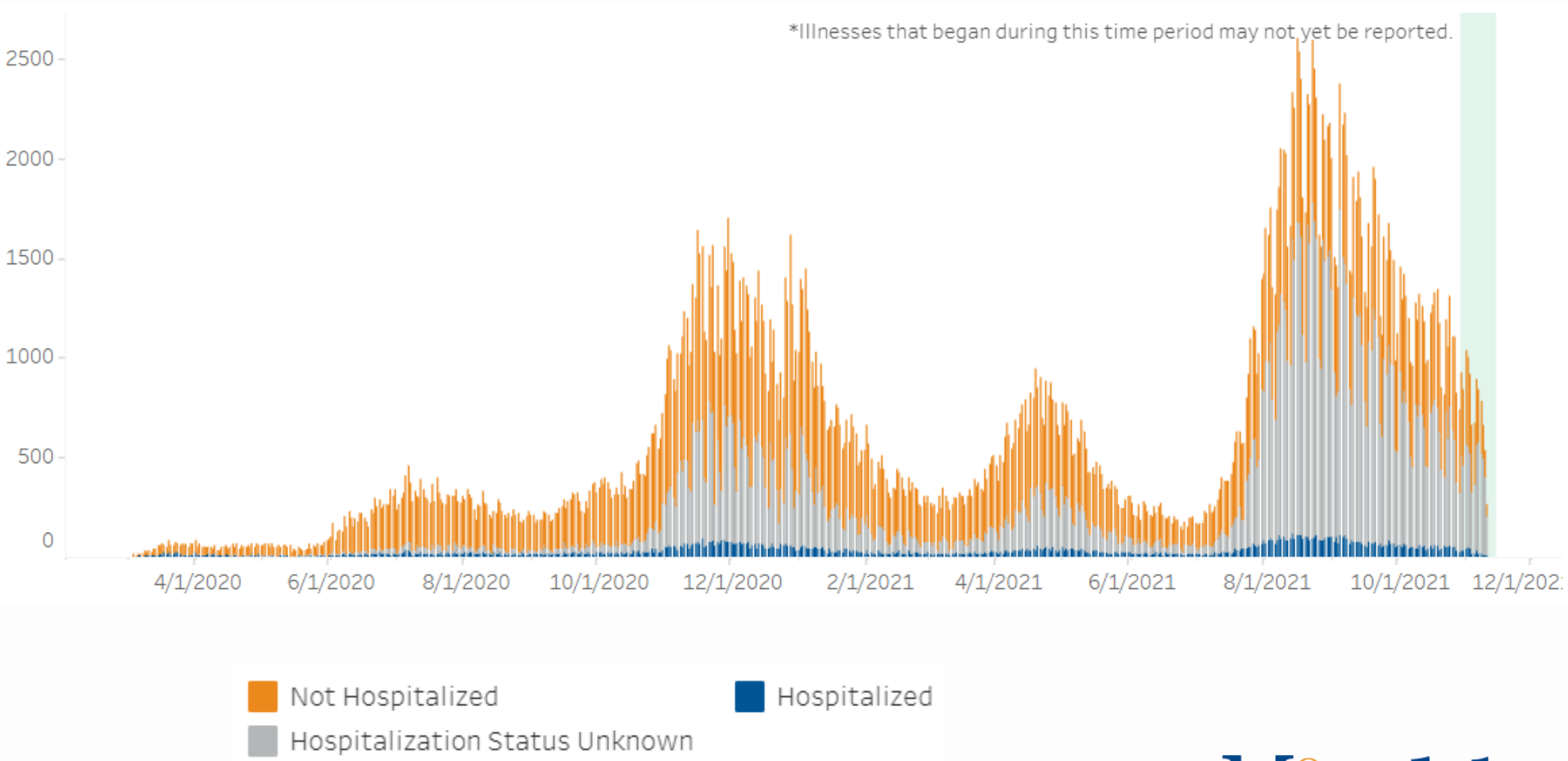
Oregon
Health
Authority

Oregon COVID-19 Cases and Deaths

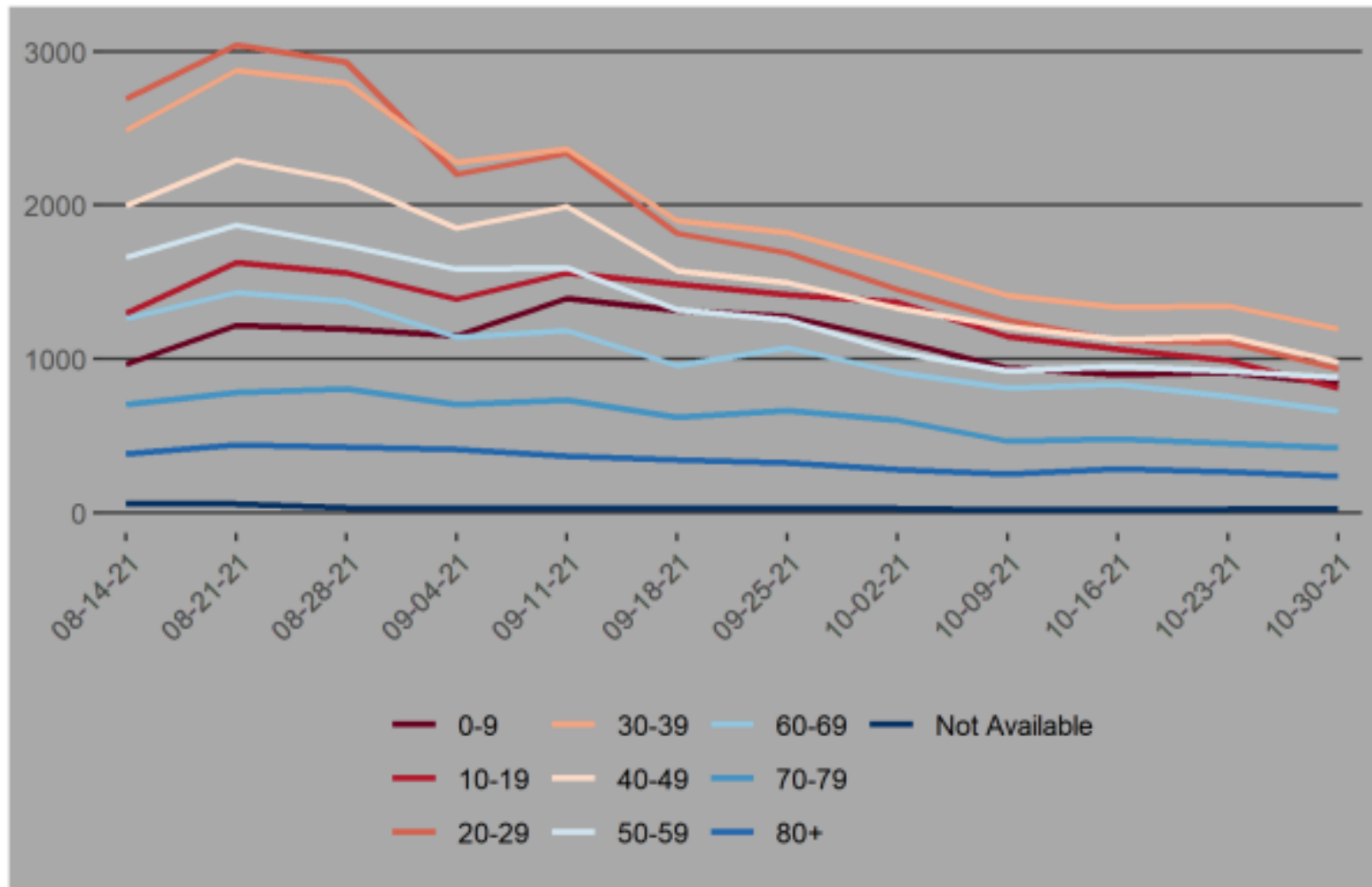
Total	
Cases	
Total	380,092
per 100k	9,012
Rank	4 th lowest (median: 14,244)
Deaths	
Total	4,803
per 100k	113
Rank	6 th lowest (median: 229)

Last 7 Days	
Cases	
Total	5,839
per 100k	138.4
Rank	15 th lowest (median: 207.9)
Deaths	
Total	183
per 100k	4.3
Rank	7 th highest (median: 2.3)

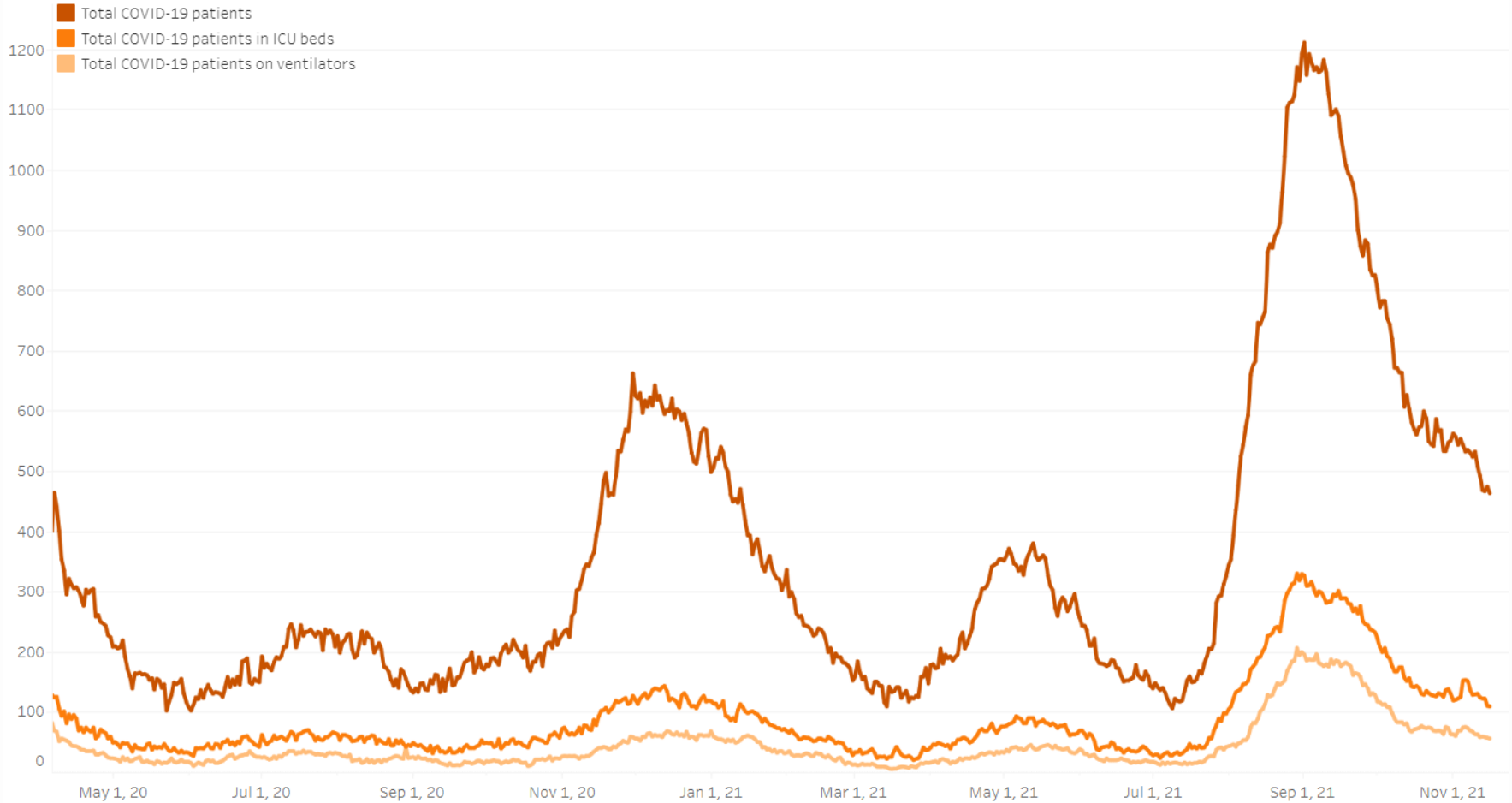
Oregon's Epi Curve



Recent Cases by Age and Week of Onset



Hospital Trends by Severity



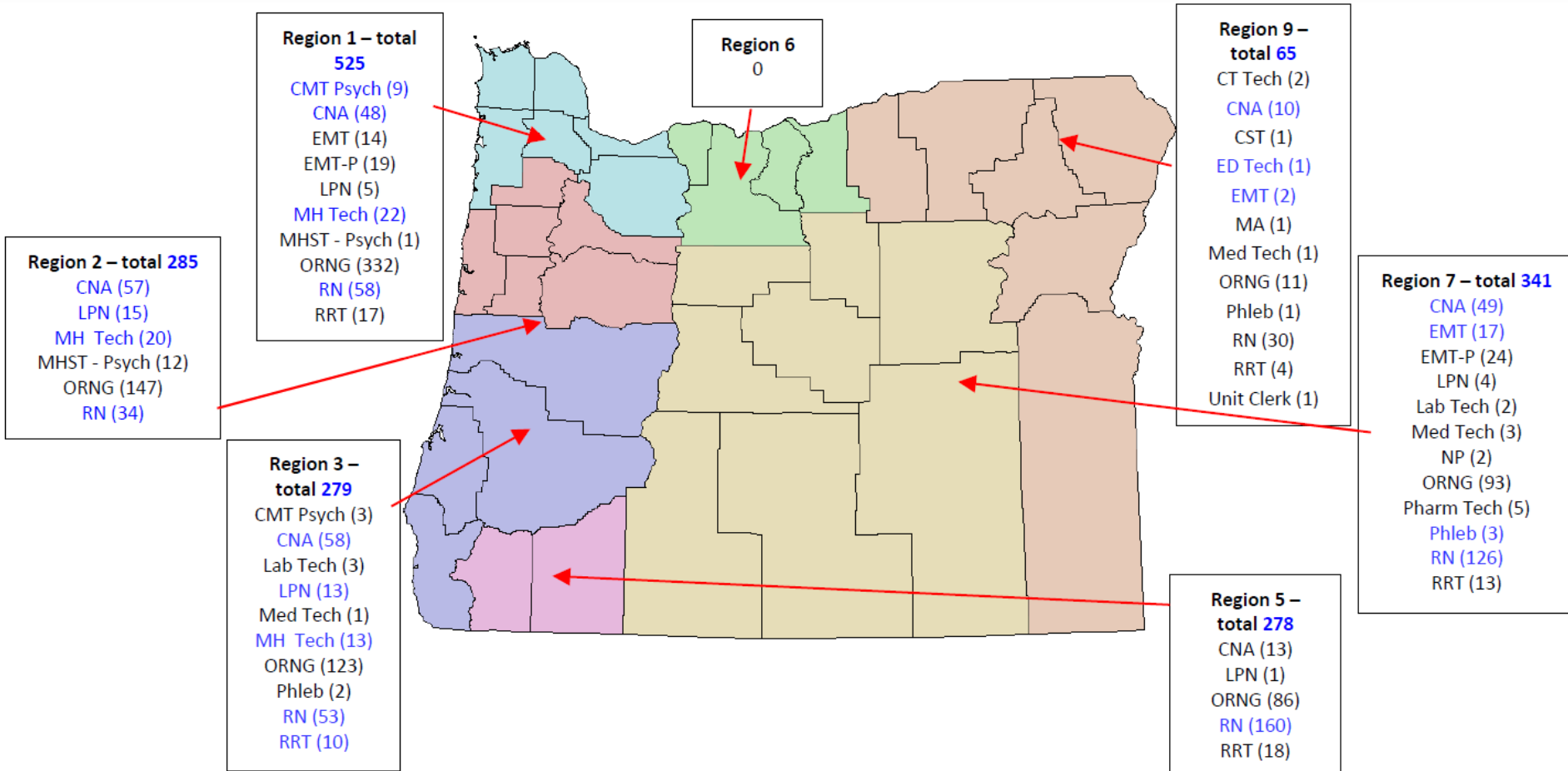
Hospital Capacity Incident Management Team

- Hospitalizations statewide remain very high, despite overall decline in COVID-19 cases
- Collaborating with ODHS regarding filling staffing requests, especially around behavioral health needs, and stabilizing health systems and social services to provide support across continuum of care from an all systems approach
- Evaluating long-term staffing, discharge barriers, and workforce solutions to sustain support for hospitals and care facilities as capacity remains stressed due to ongoing staffing constraints and backlog of acute care needs, surgeries, and other health requirements
- Evaluating resources that may be available for health care organizations that would support frontline health care workers emotional well-being

Hospital Capacity Incident Management Team

- Fulfilling incoming staffing requests and contract amendments, deploying personnel, and working on contract extension requests
- Monitoring workforce capacity following vaccination requirement, resource requests and shortages, funeral home activity, and morgue storage capacity
 - Establishing ongoing communications regarding blood supply shortages and increased demand as facilities return to performing surgeries
 - Bi-Mart pharmacy closures causing critical issues in Region 9
 - Logistics team, CRRU Pharmacy Team and Board of Pharmacy are working on messaging related to pharmacy closures
- Discussing vaccination hub options, including developing long-term care facility (LTCF) vaccination teams
 - Submitting extension for FEMA vaccination teams, including additional staffing for teams

Hospital Capacity Incident Management Team



COVID-19 Vaccination Update



COVID-19 Vaccine Doses Administered by Day

3,438,809

2,130,605

236,012

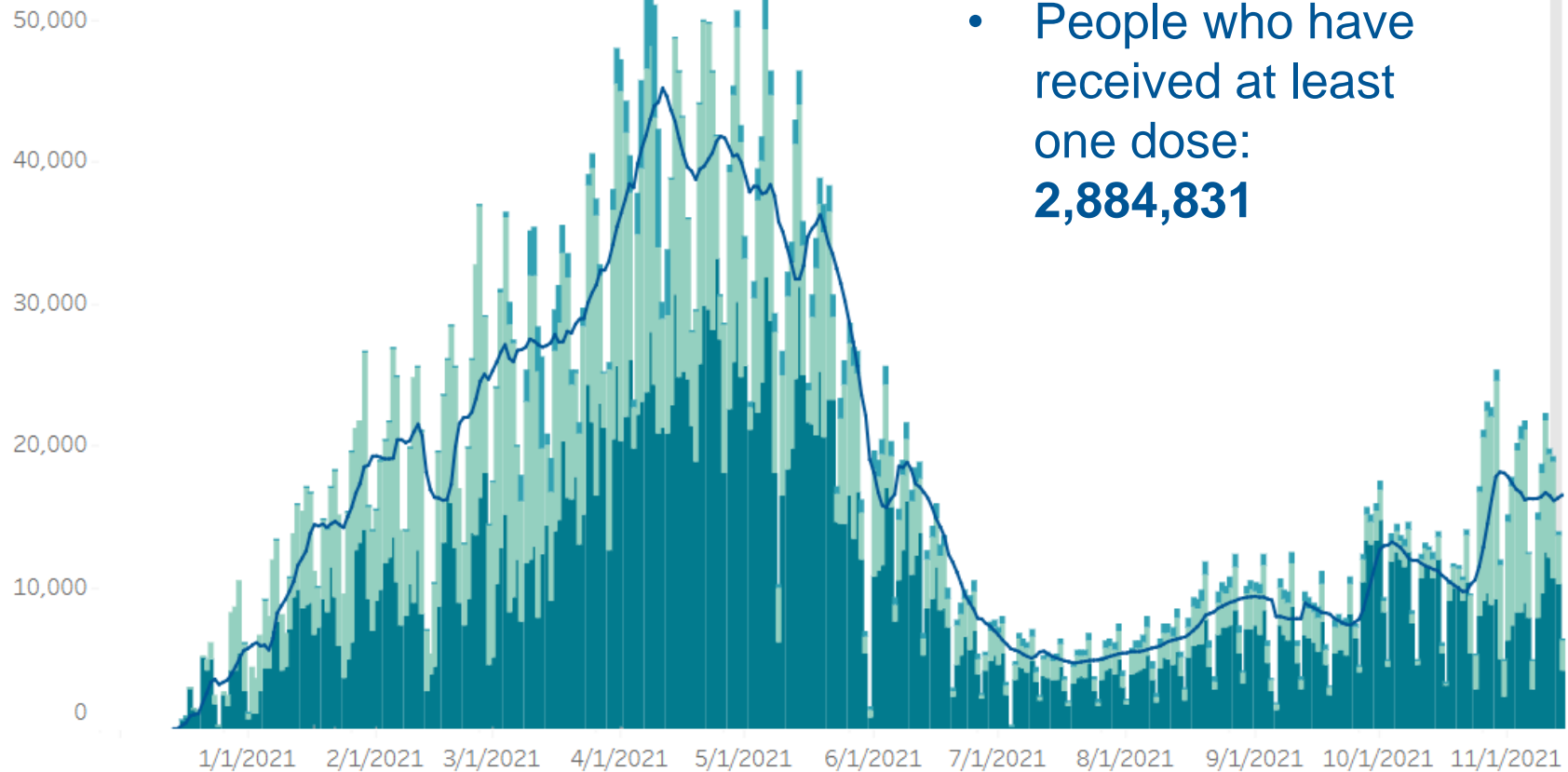
4,581

Pfizer

Moderna

Johnson & Johnson

Unspecified



- People who have received at least one dose: **2,884,831**

Source:

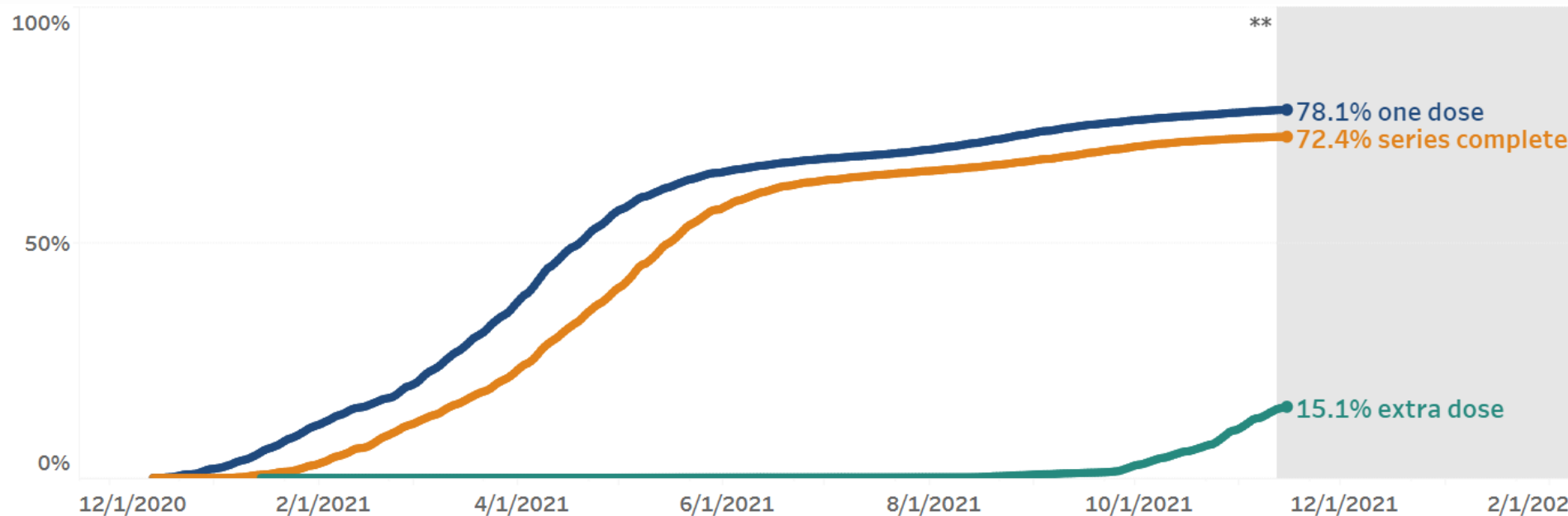
<https://public.tableau.com/profile/oregon.health.authority.covid.19#!/vizhome/OregonCOVID-19VaccinationTrends/OregonCountyVaccinationTrends>

Percent of People Age 18+ Living in Oregon Vaccinated

78.1% have initiated COVID-19 vaccination and have received at least one dose of any COVID-19 vaccine.*

72.4% have completed their primary series, or have received 1 dose of Johnson & Johnson, 2 doses of Moderna, or 2 doses of Pfizer vaccines.

15.1% have received an extra dose of any COVID-19 vaccine in addition to completing their primary series.

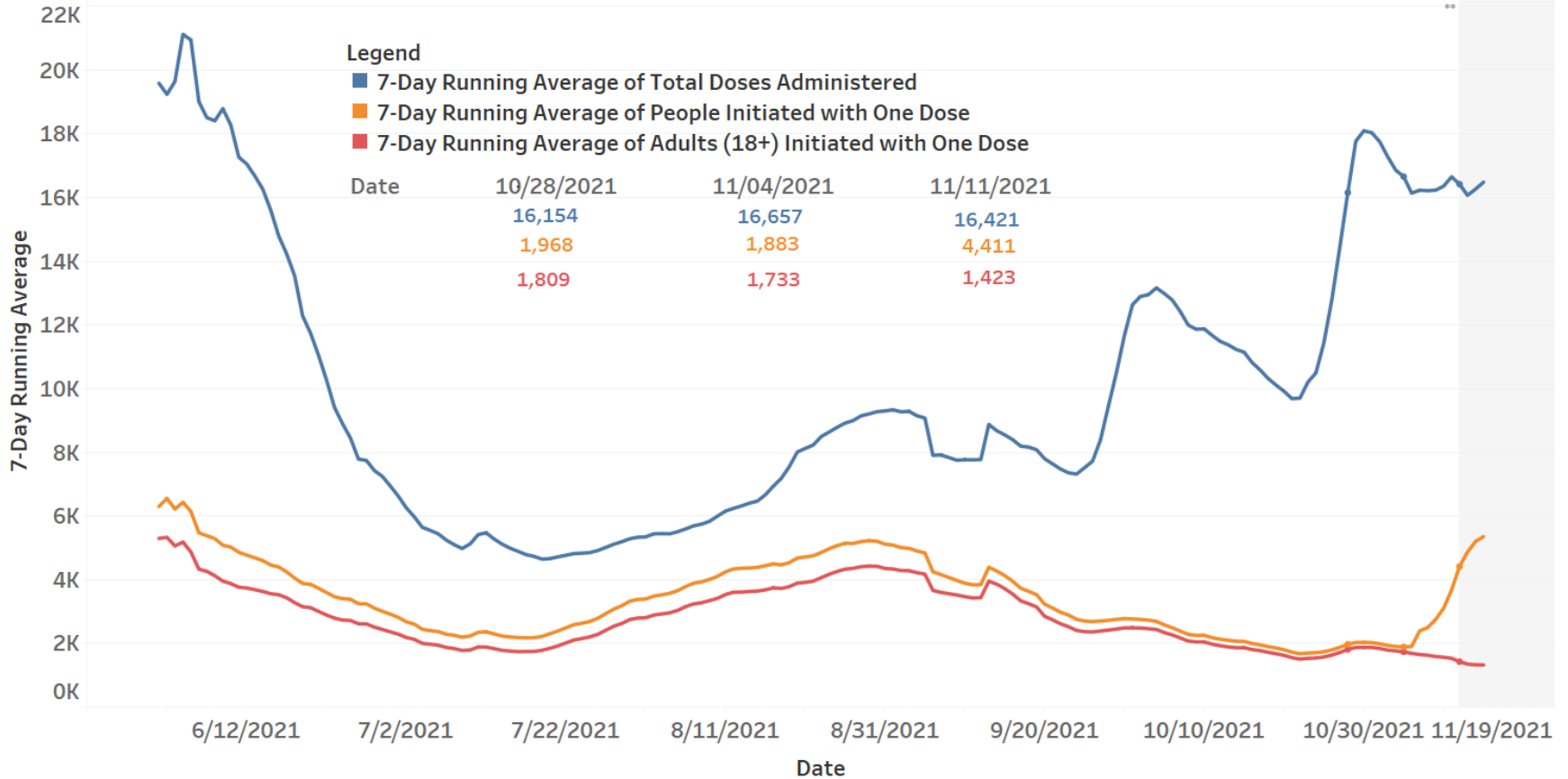


Source:

https://public.tableau.com/profile/oregon.health.authority.covid.19?utm_medium=email&utm_source=govdelivery#!/vizhome/OregonCOVID-19VaccineEffortMetrics/StatewideProgress

7-Day Running Averages: Total Doses Administered and People Initiated with One Dose

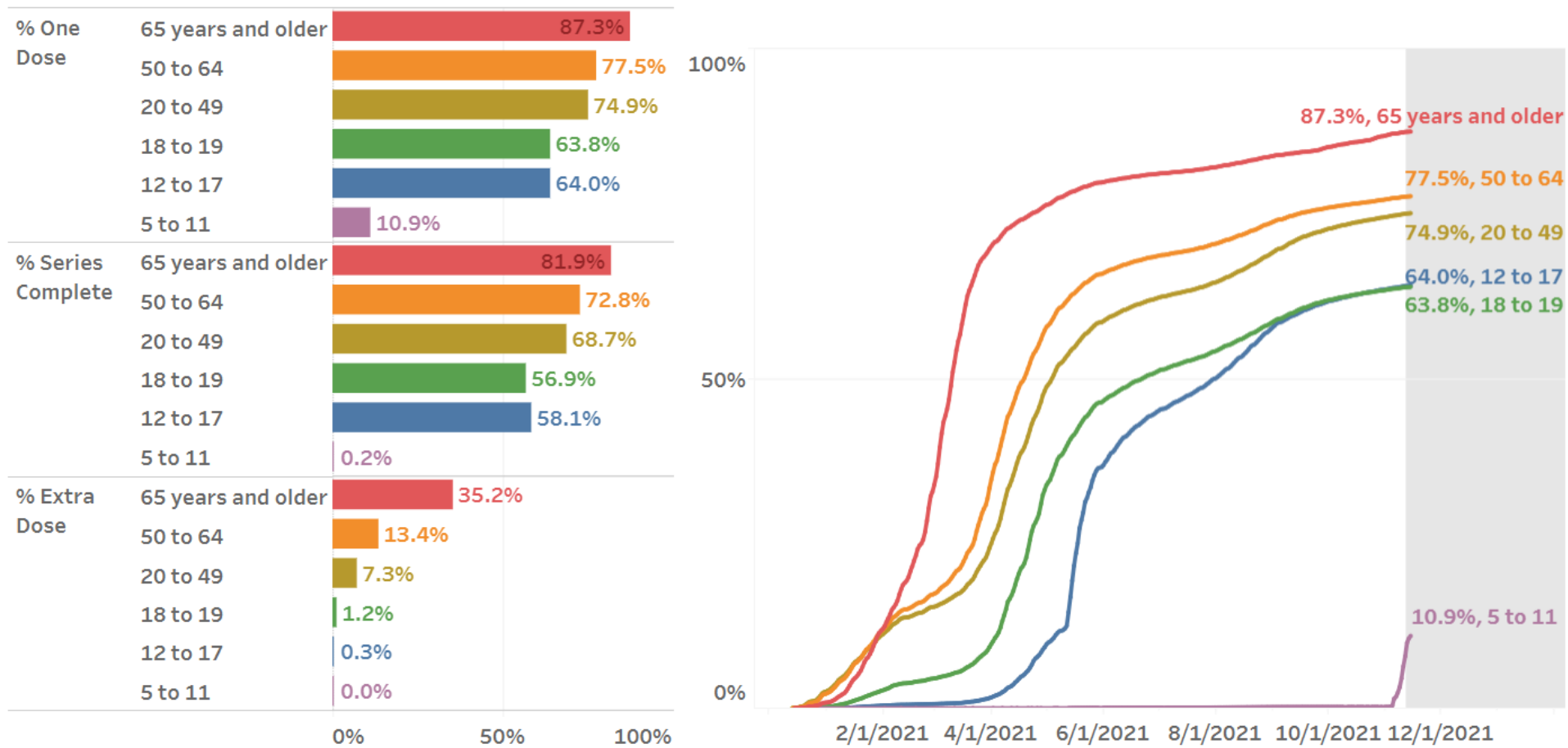
ALERT IIS



Data current as of 12:01am 11/15/2021

View dose administrations online [here](#) and [here](#)
 View averages of people initiated online [here](#)

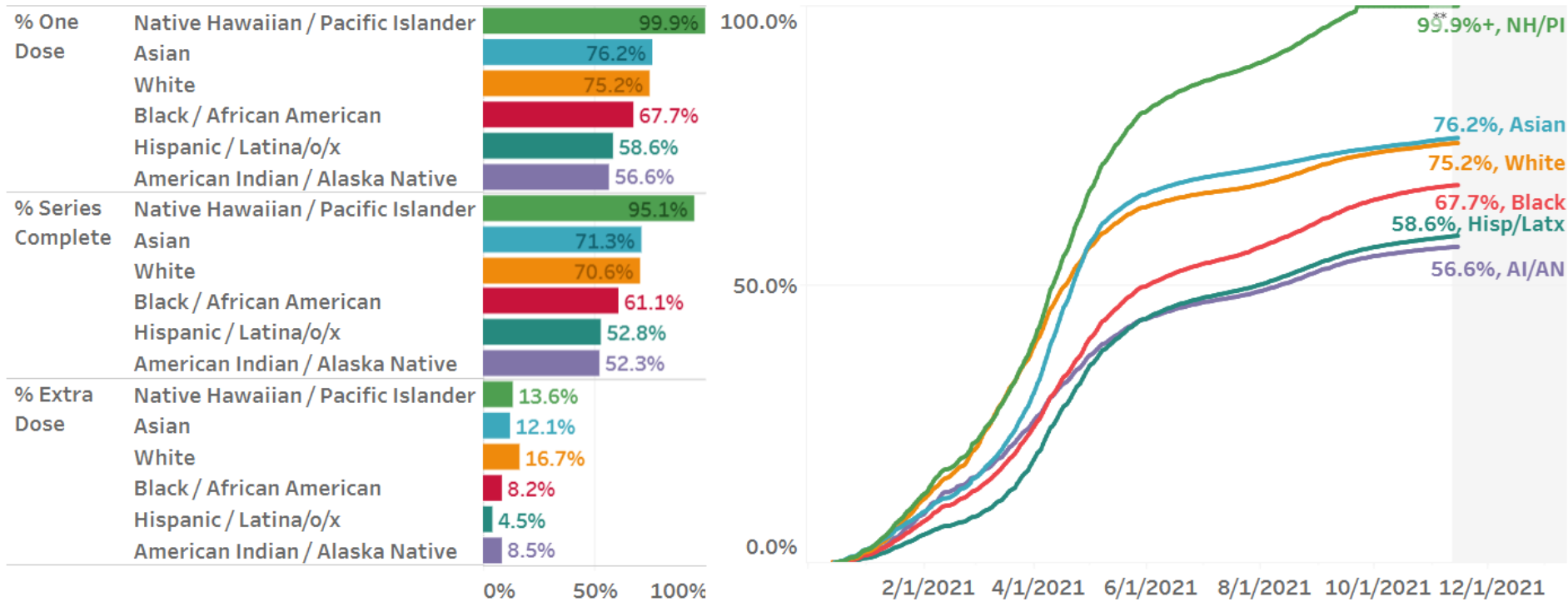
Vaccines Administered Over Time by Age



Source:

https://public.tableau.com/profile/oregon.health.authority.covid.19?utm_medium=email&utm_source=govdelivery#!/vizhome/OregonCOVID-19VaccineEffortMetrics/StatewideProgress

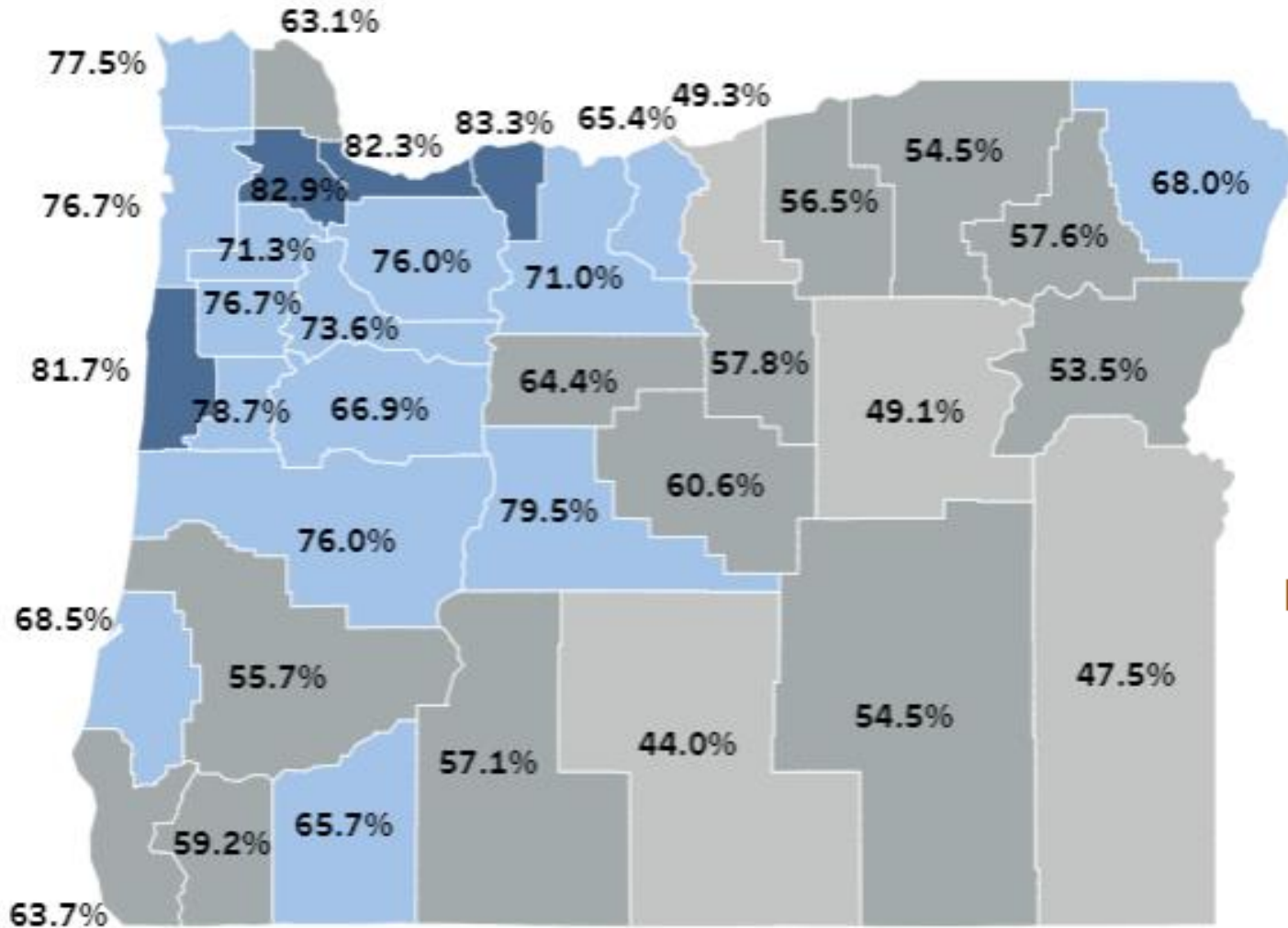
Vaccines Administered by Race/Ethnicity



Source:

https://public.tableau.com/profile/oregon.health.authority.covid.19?utm_medium=email&utm_source=govdelivery#!/vizhome/OregonCOVID-19VaccineEffortMetrics/StatewideProgress

County Vaccination Rates



Legend

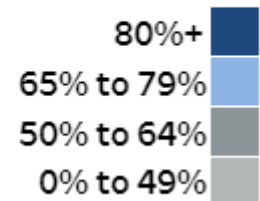
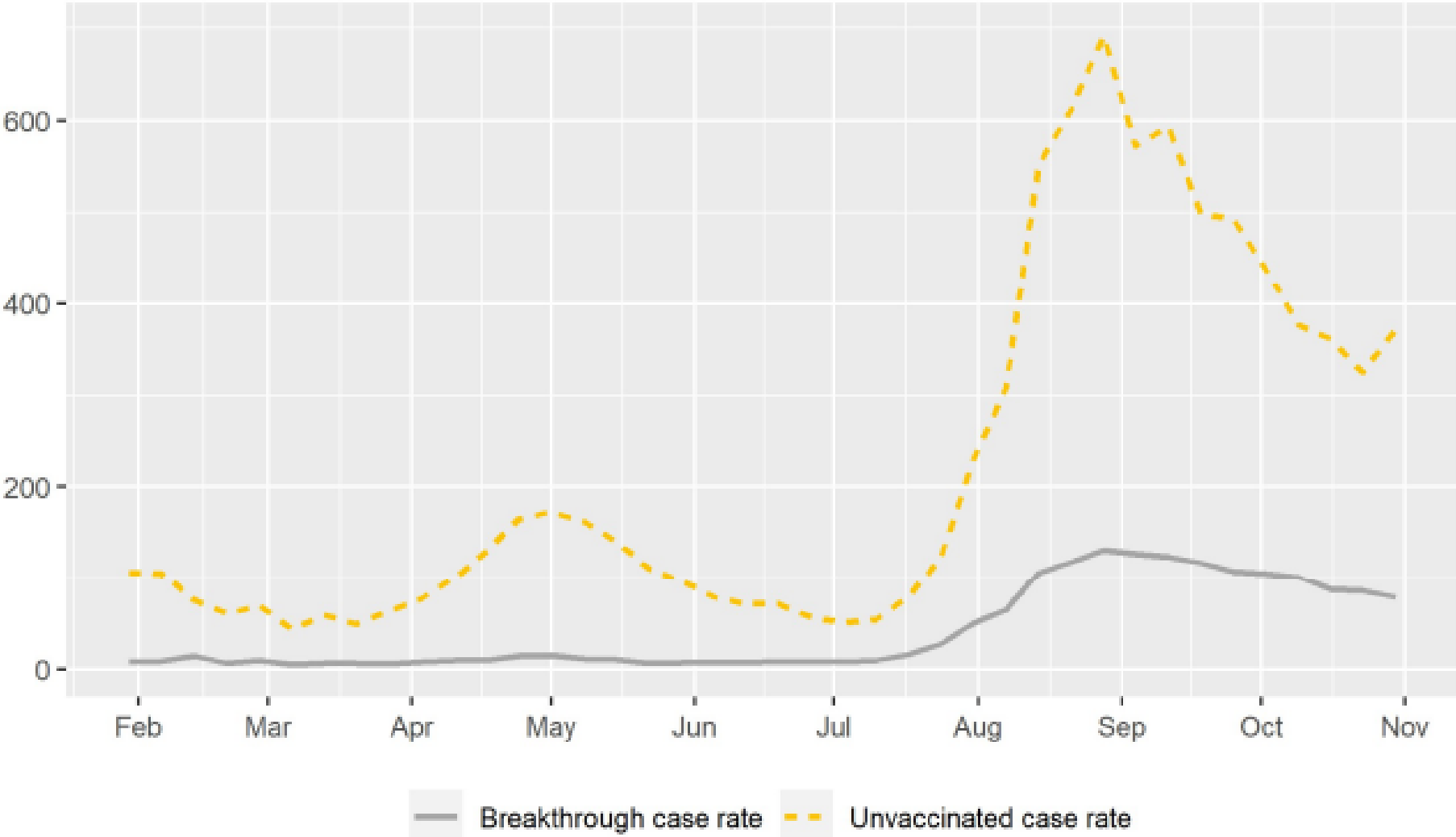
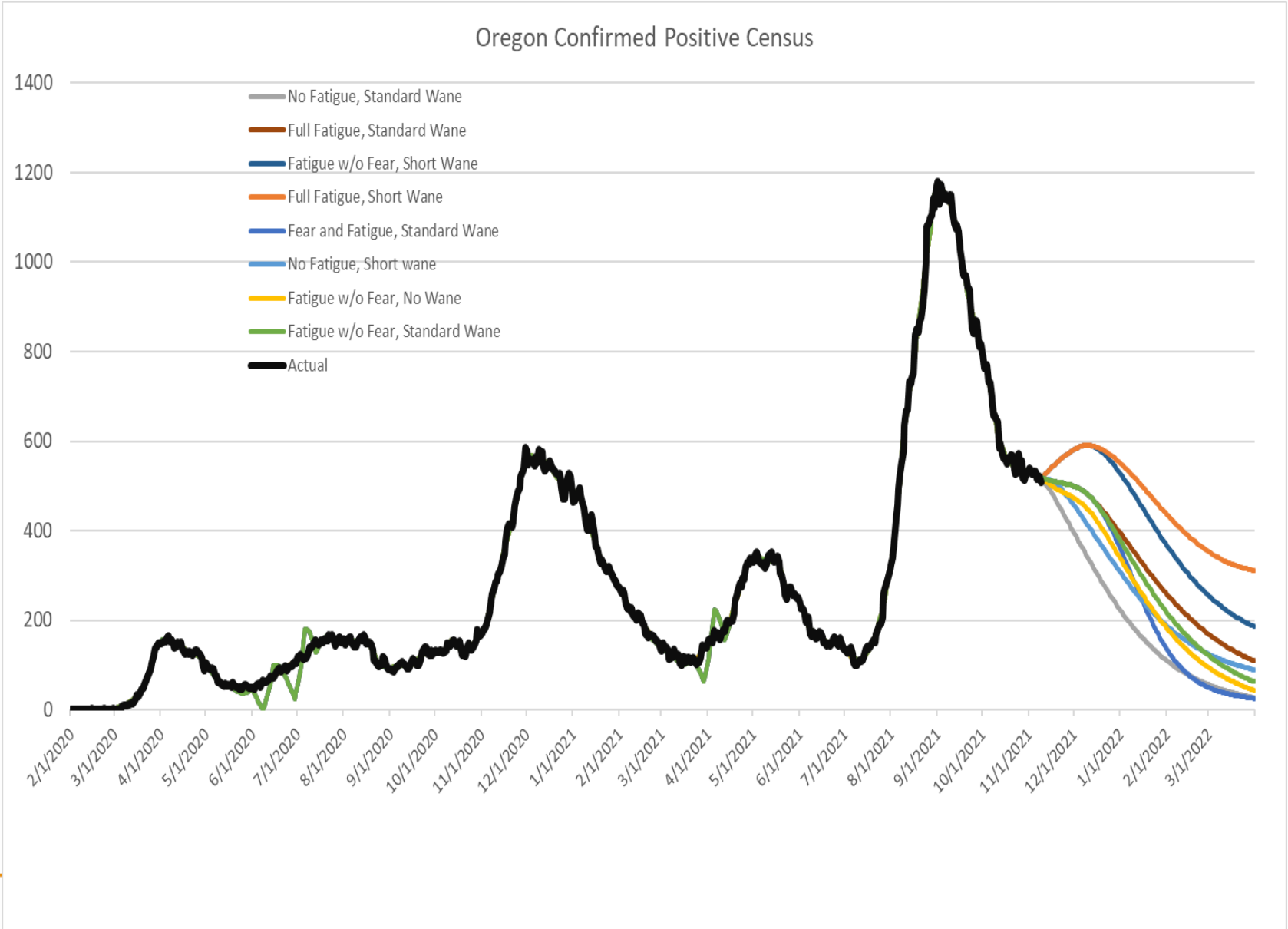


Figure 1. COVID-19 cases per 100,000 per week, by vaccination status



Updated OHSU Modeling



Thank You!