

House Interim Committee on Water

Oregon Drought Status Update



Ryan Andrews

Hydrologist

Water Supply Availability Committee (Chair)

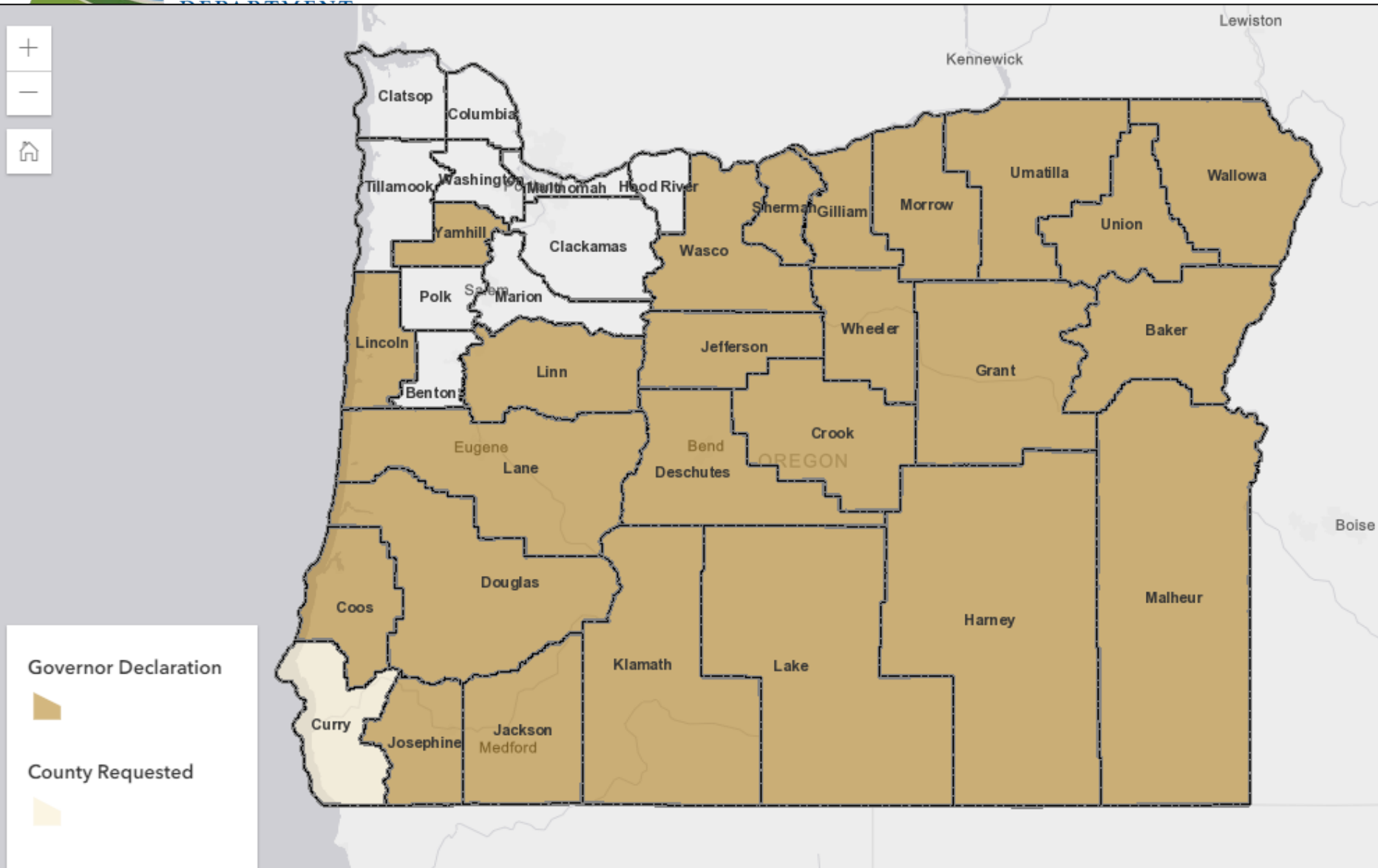
Drought Readiness Council (Co-Chair)

November 17th, 2021

Overview of Conditions

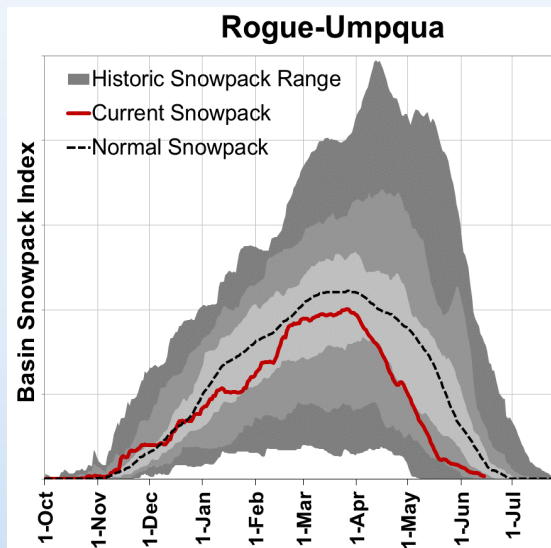
- Second year of multi-year drought event
 - Impacts and severity arrived earlier
- Record low streamflows
 - Reduced water supply for instream and out-of-stream uses
- Historically dry soils
 - Poor vegetative conditions
 - Further exacerbating drought conditions

Drought Declaration Status Map

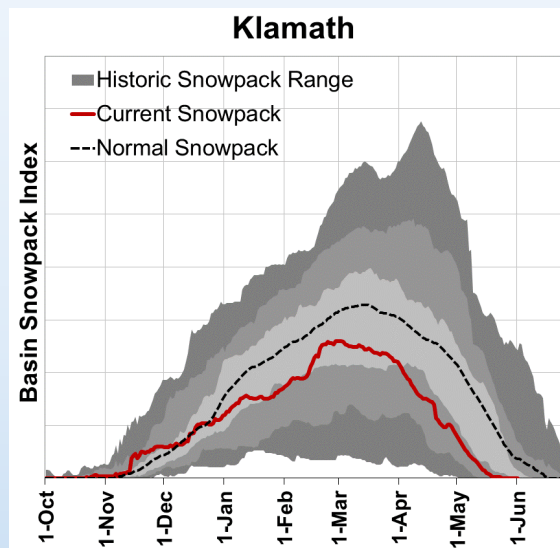


Early Snowpack Meltout

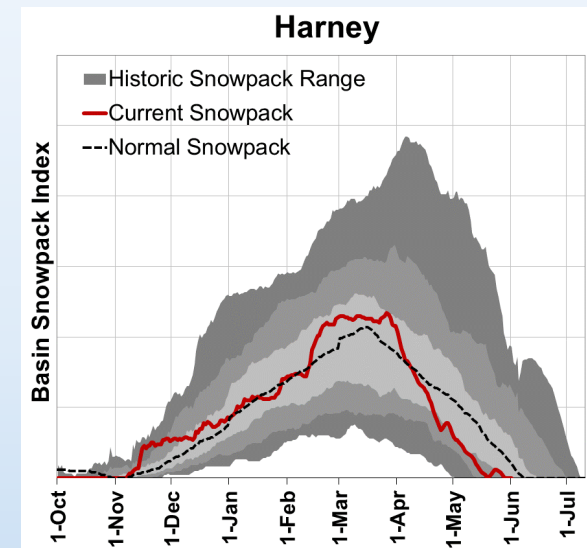
- Rapid, early snowpack meltout occurred in many basins
 - 1 – 4 weeks early
- Reduces summer streamflows and extends summer drought conditions



~ 2 weeks early



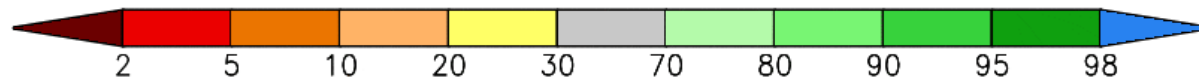
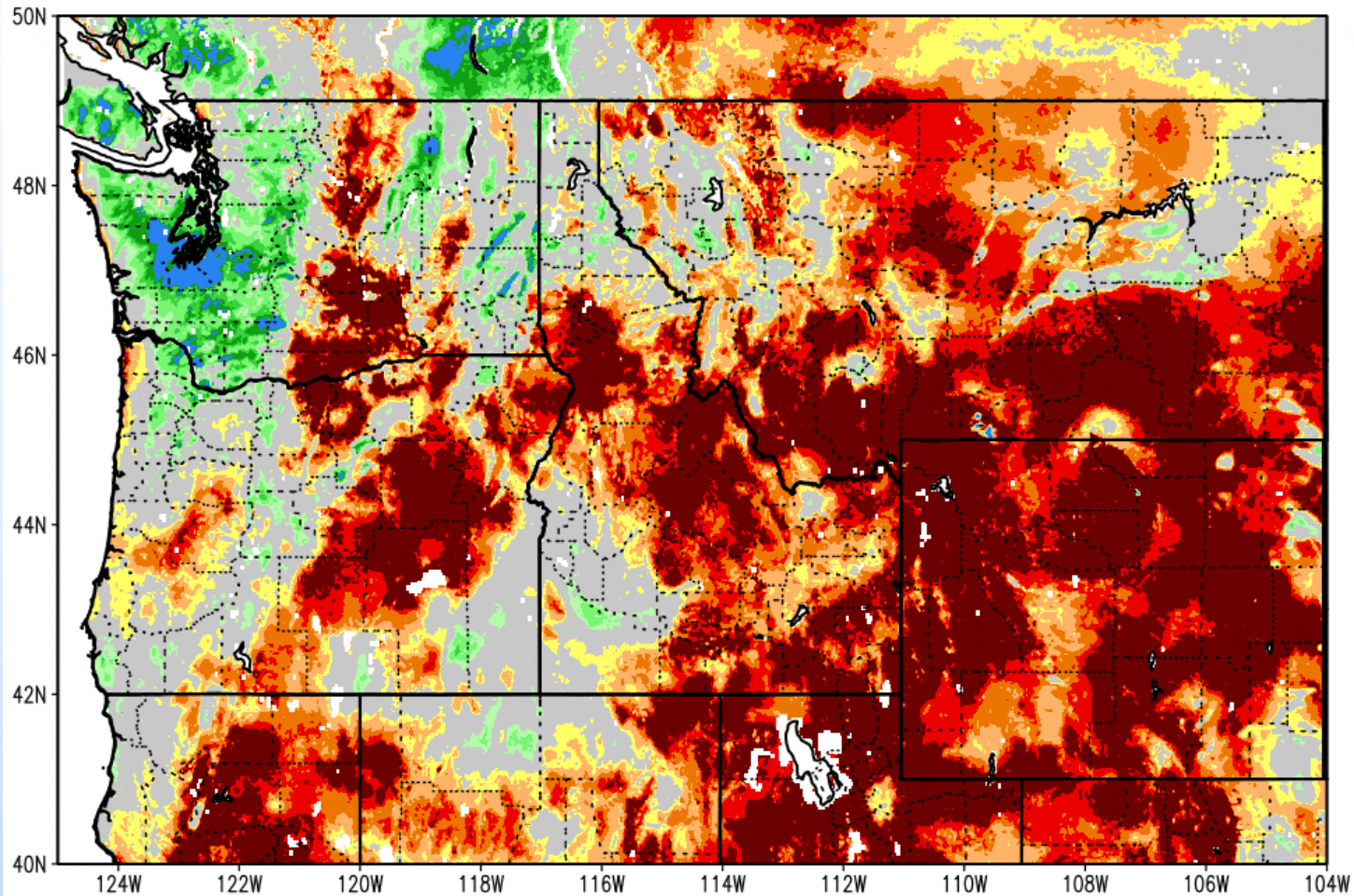
~ 3 weeks early



~ 3 weeks early

Low Soil Moisture Content

SPoRT-LIS 0-10 cm Soil Moisture percentile valid 16 Jun 2021








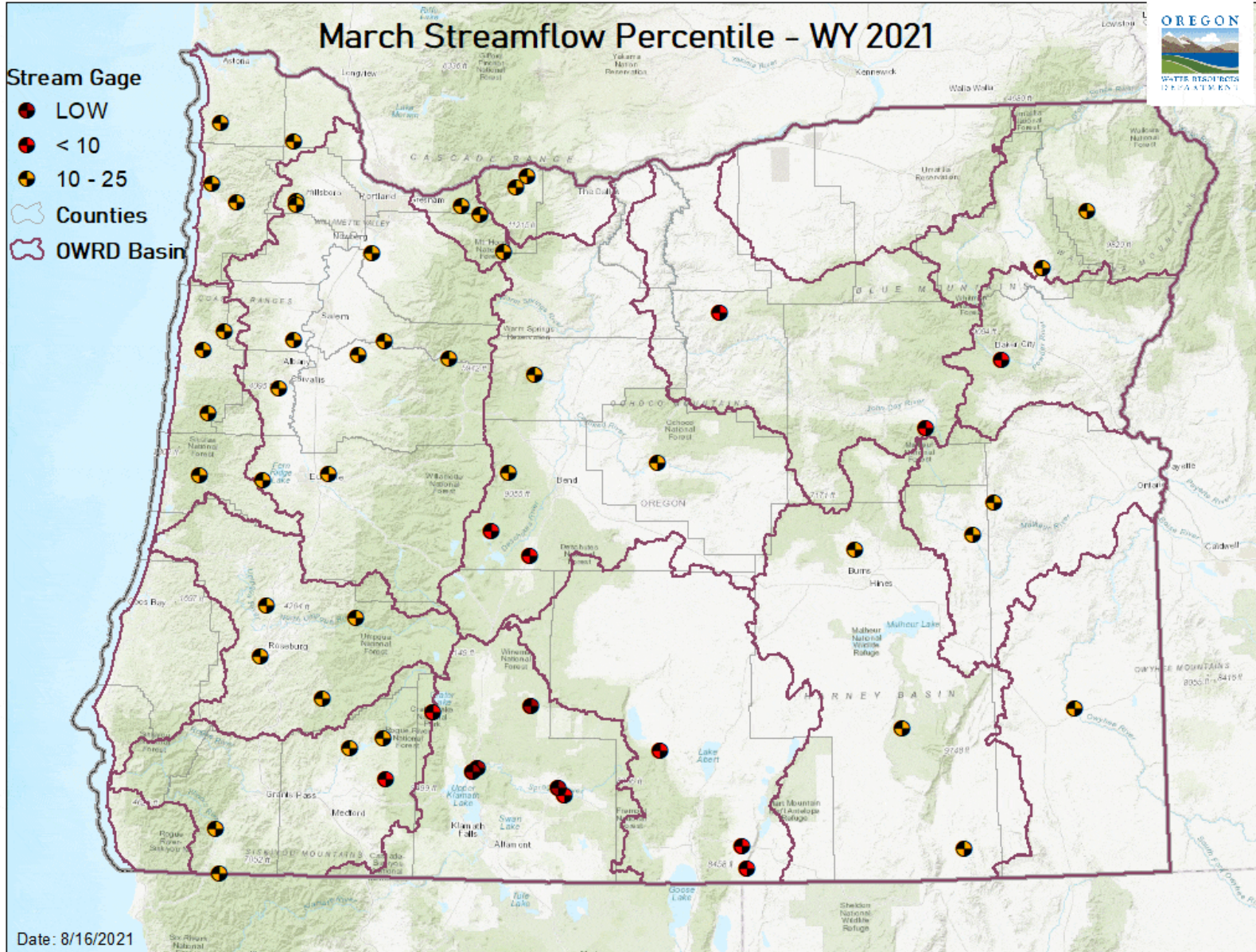
Sustained Record Low Streamflows



March Streamflow Percentile - WY 2021

Stream Gage

-  LOW
-  < 10
-  10 - 25
-  Counties
-  OWRD Basin



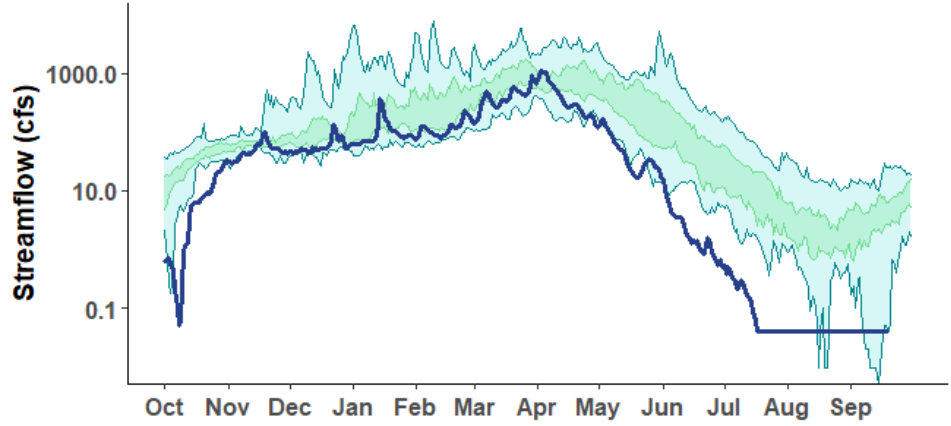
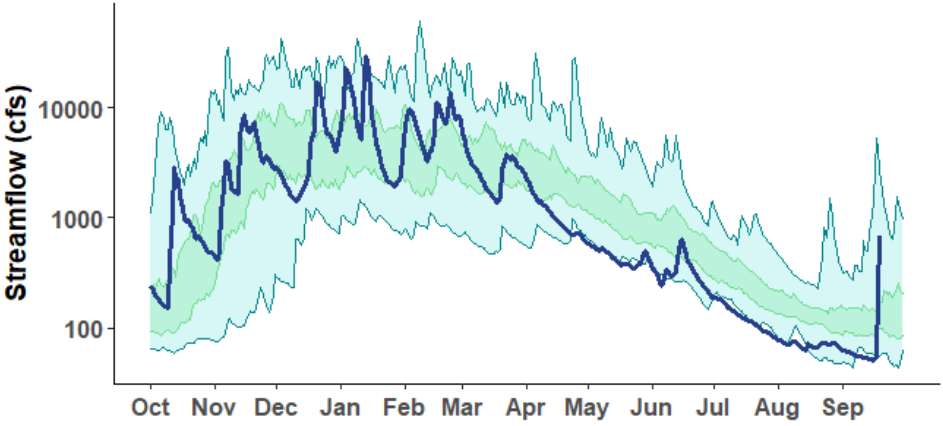
Date: 8/16/2021



OREGON

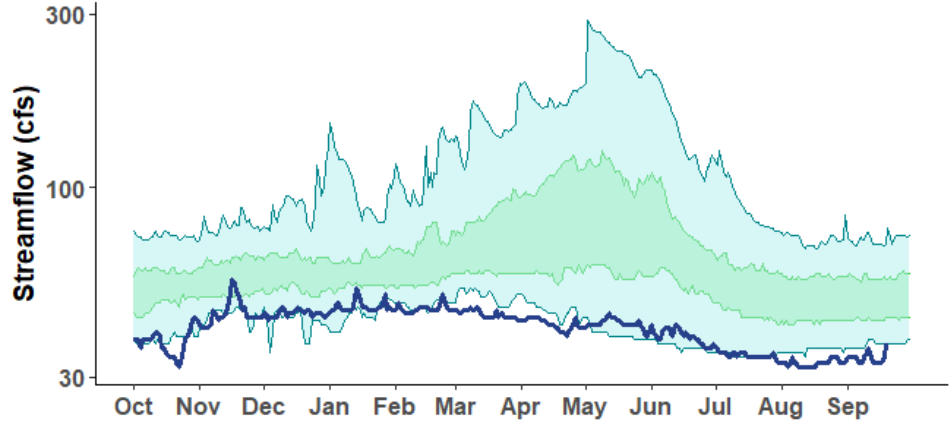
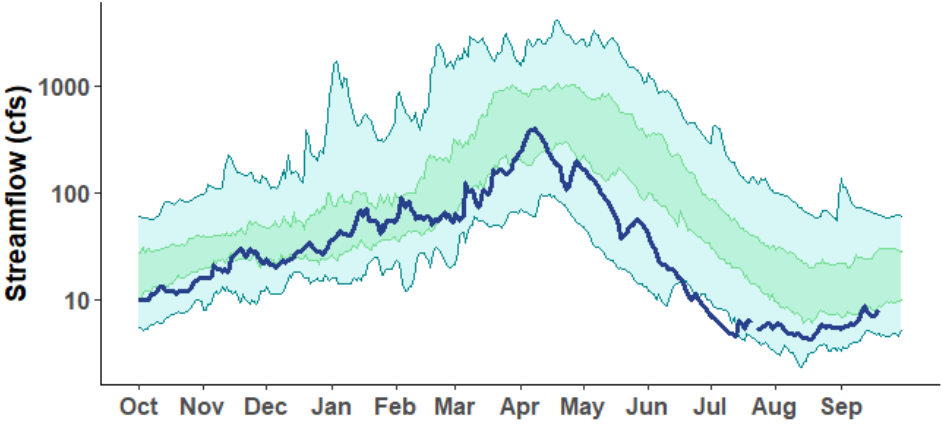
14301000 - NEHALEM R NR FOSS, OR
NORTH COAST BASIN
POR: 1981-2010

14079800 - CROOKED R AB PRINEVILLE RES NR POST, OR
DESCHUTES BASIN
POR: 1994-2010



10393500 - SILVIES R NR BURNS, OR
MALHEUR LAKES BASIN
POR: 1981-2010

11491400 - WILLIAMSON R BL SHEEP CR NR LENZ, OR
KLAMATH BASIN
POR: 1981-2010

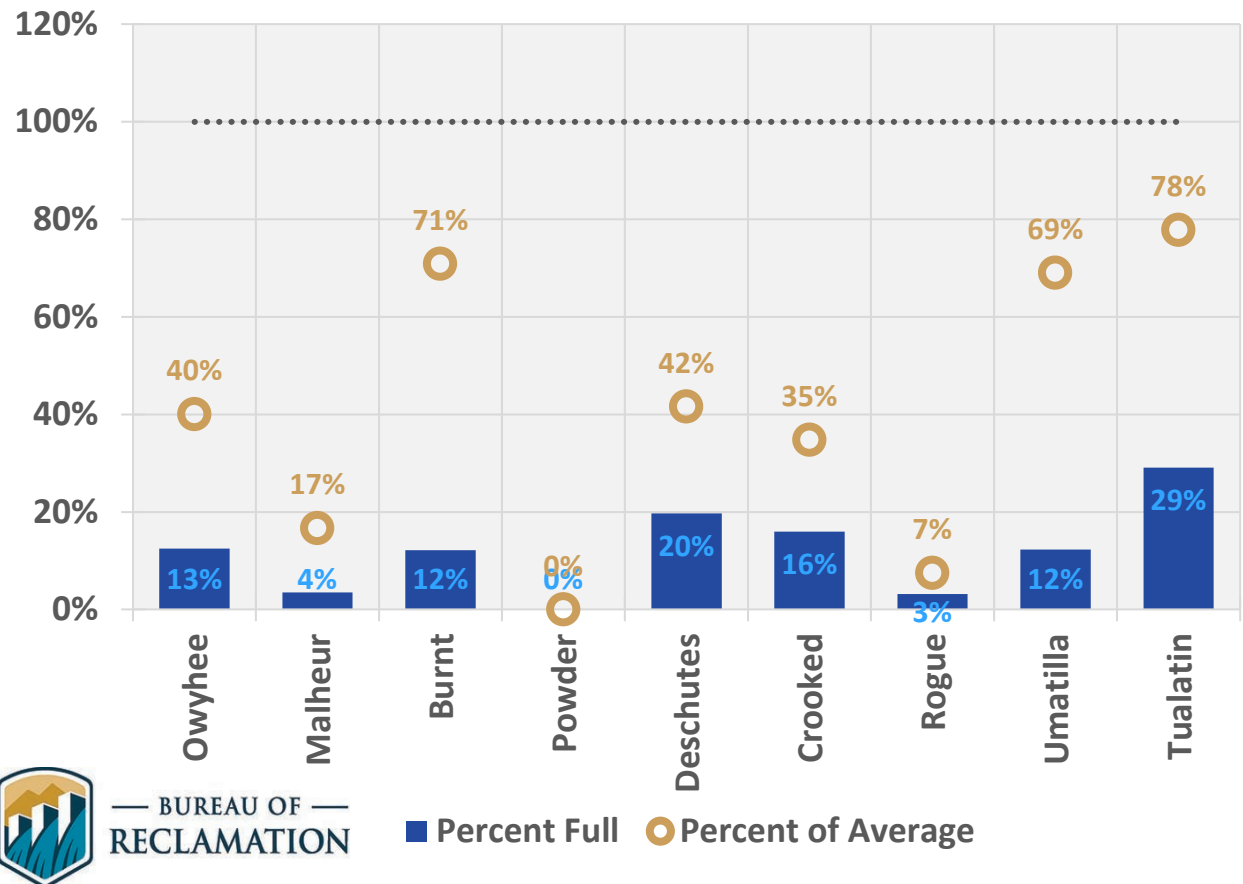


WY2021 MIN - MAX Q25 - Q75

Reservoir Storage

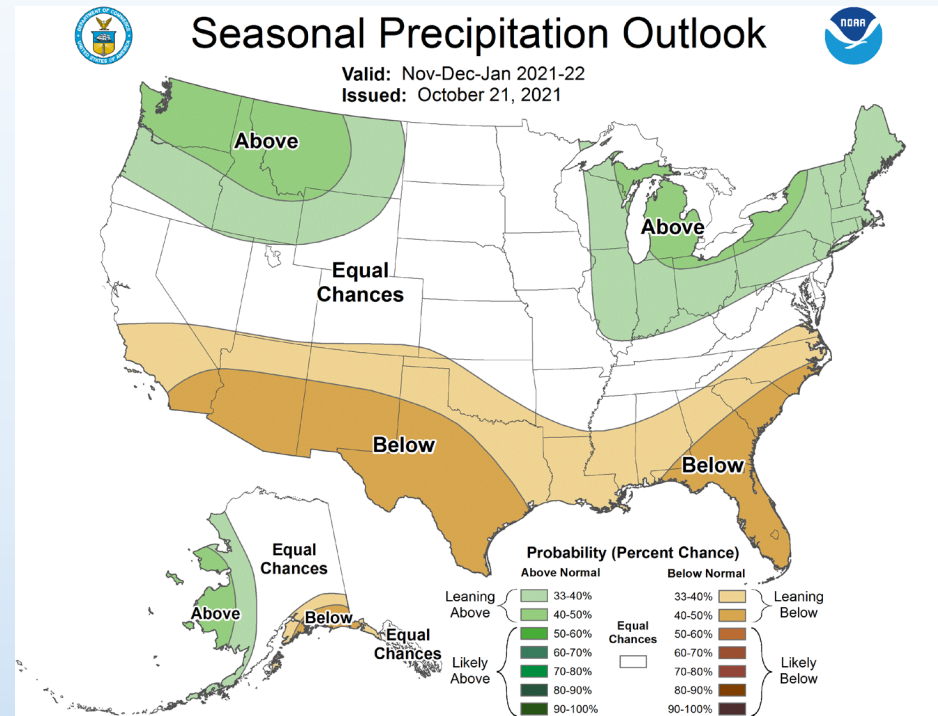
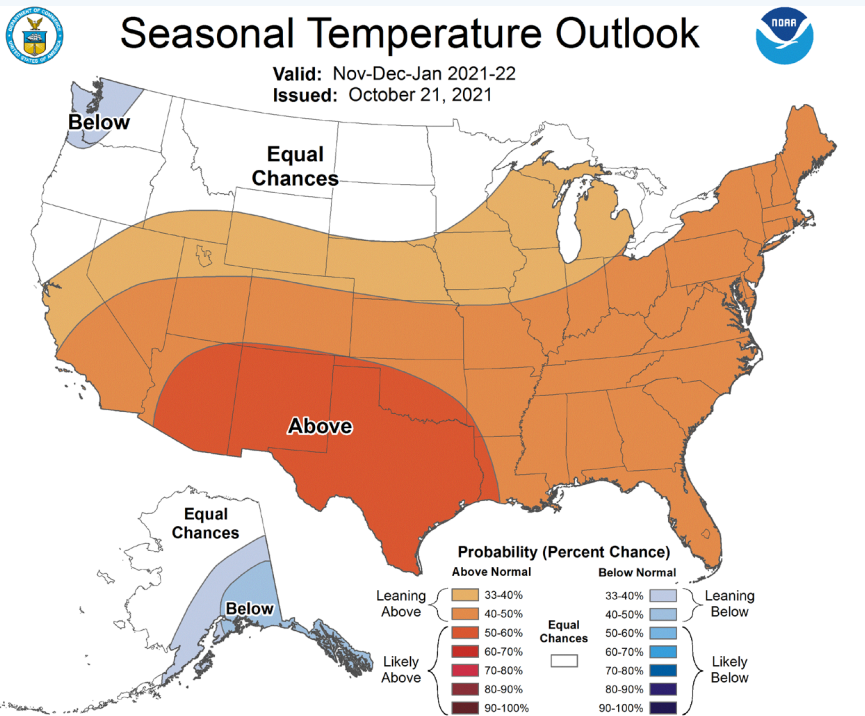
- Early shutoff in many BOR and USACE systems
- Reduced allotments and curtailment measures implemented
- Klamath Basin storage also well below average
 - 13% Clear Lake
 - 38% UKL
- Record low carryover for WY 2022

November 9 Reservoir Storage



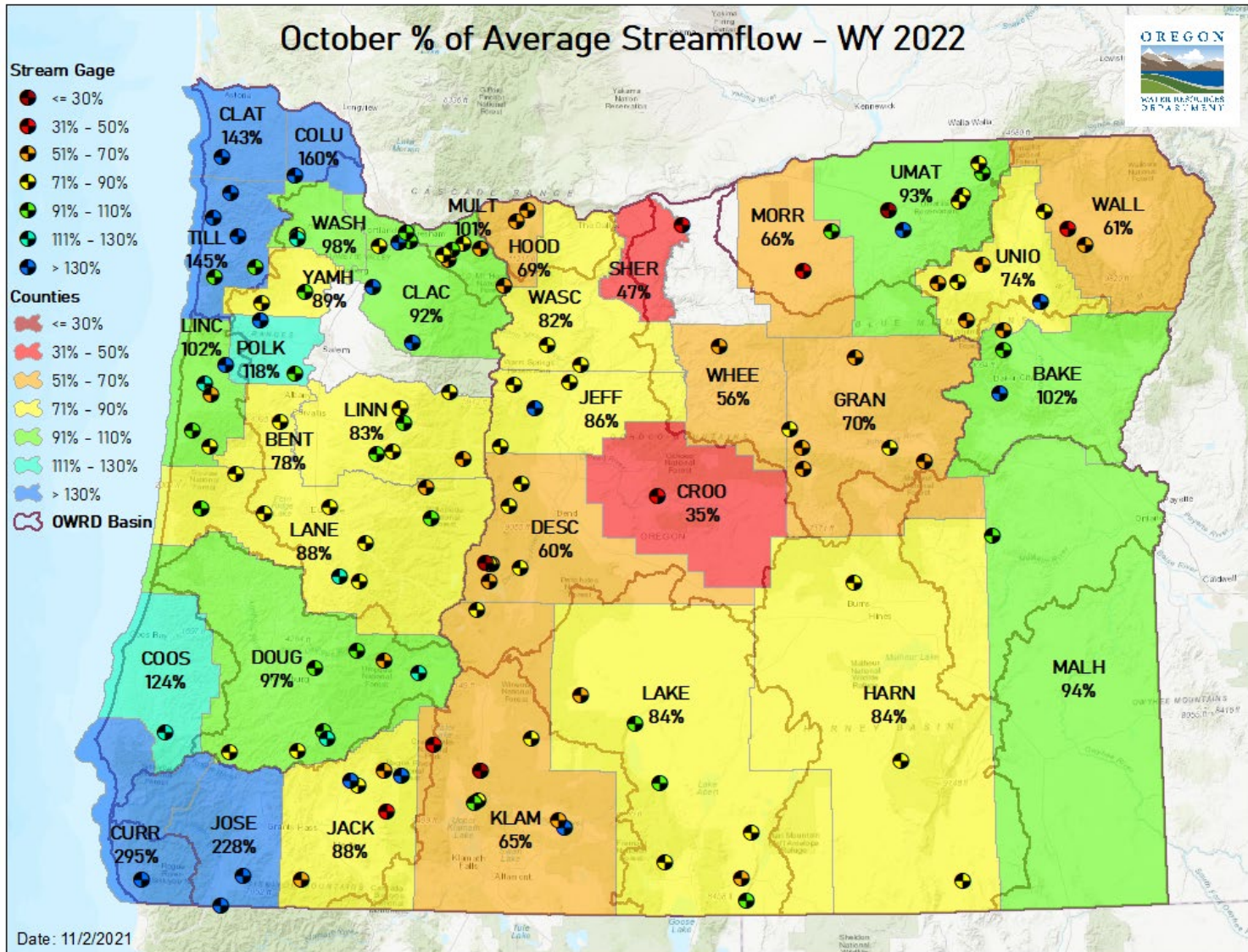
Climate Outlook

- Probabilities favor above average precipitation for most of state
- Temporary respite from current conditions





Water Year 2022





Recent Streamflows

