

House Water Committee Drought Impacts to Municipal Water Providers

Jessica Dorsey, City of Hillsboro

November 16, 2021



Municipal Water Supply Planning and the Need to Think Long-Term



- Responsibility to plan for and serve our growing communities



- Limited future water supply options



- Long-term climate change impacts to existing supplies



- Improve federal partnerships for water supply needs/advocacy

Drought Stressors



Increasing average annual temperatures



More frequent extreme temperatures



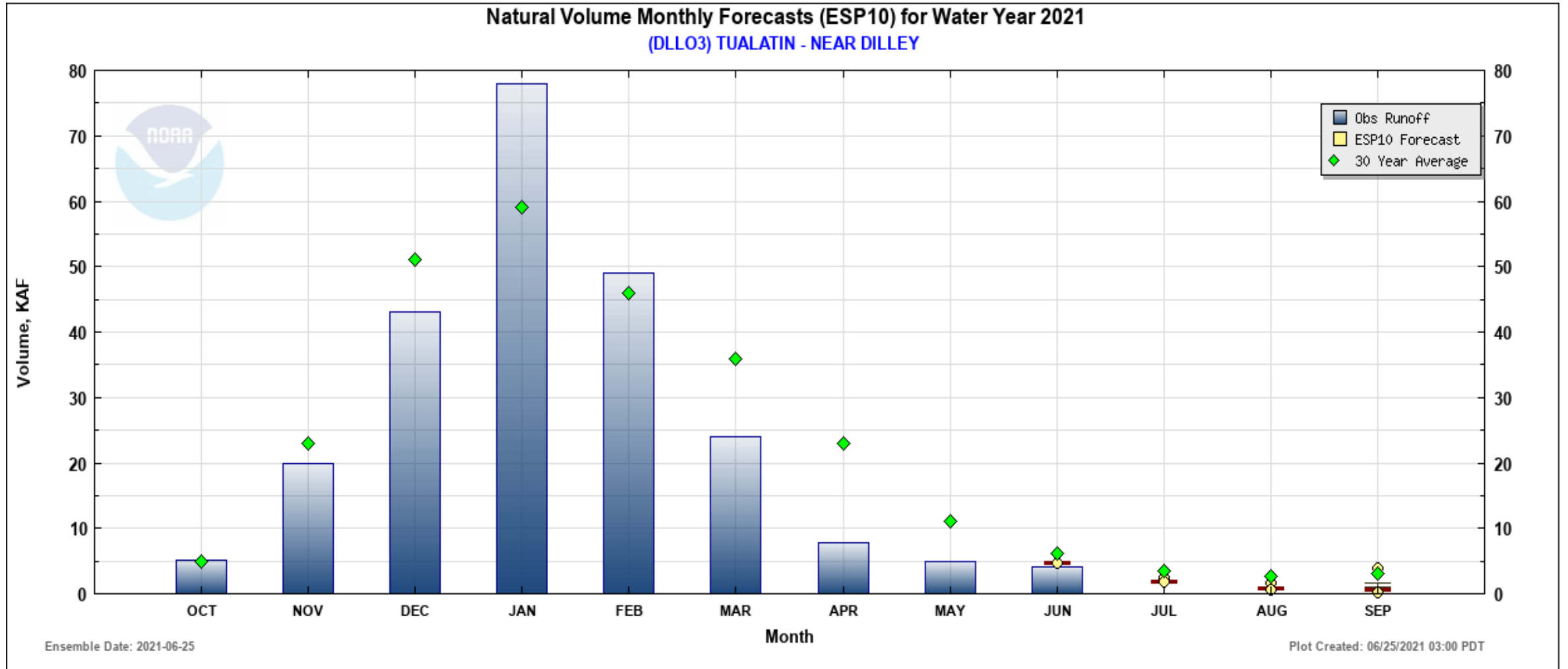
Increased risks of algal blooms



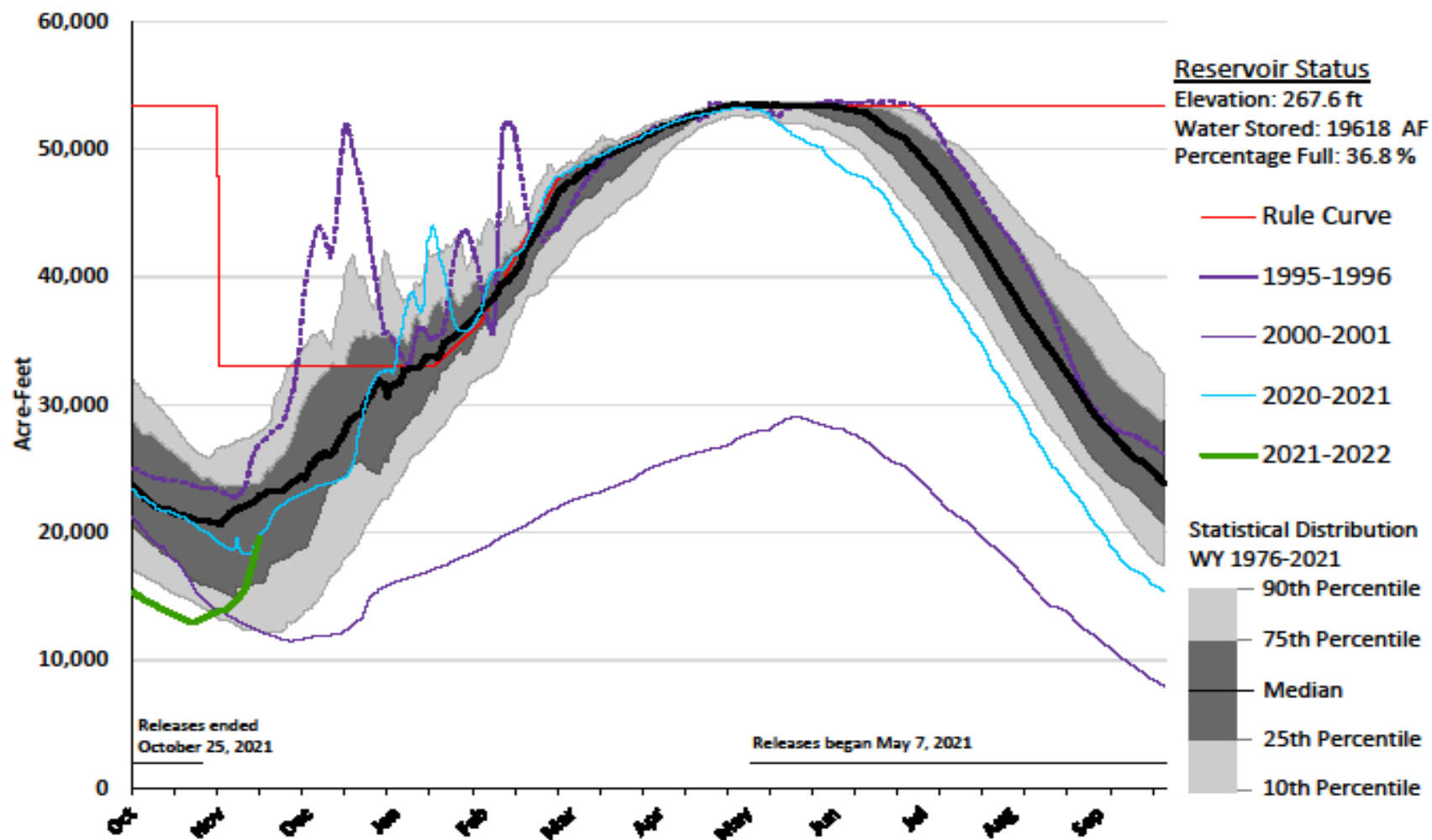
Increased risks of wildfires



Streamflow Average, Predicted & Observed

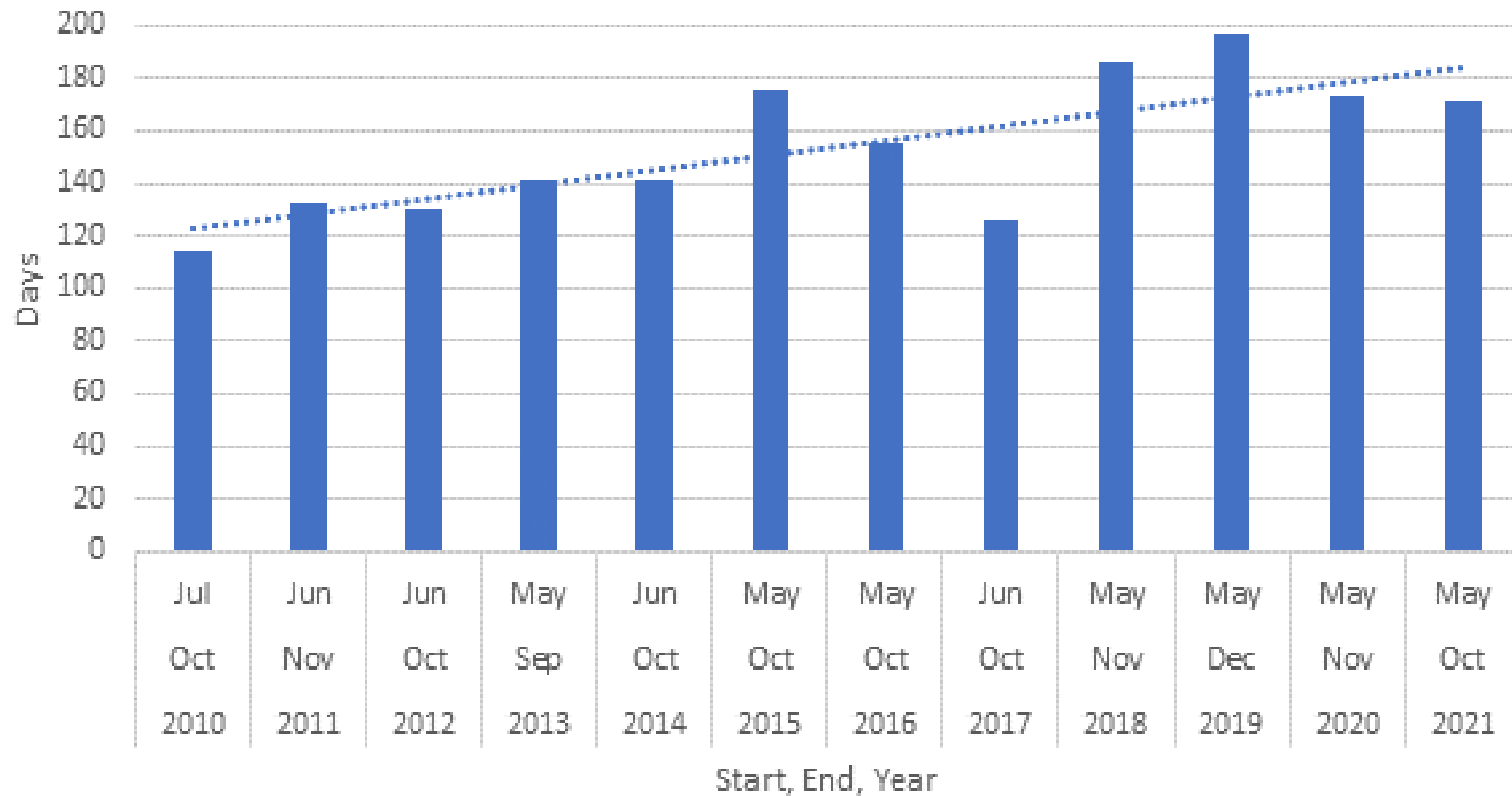


Scoggins Reservoir Storage Water Years 1976-2022 (as of November 15, 2021)





JWC Reservoir Release Seasons 2010-2021



Emergency Events



Climate Impact - Wildfire



Power Outage
Chemical Supply Interruptions



Emergency Repairs



Climate Impact – Drought
Summer Water Shortage

Redundant Water Supplies

- Key to Resiliency and Adaptability
- Avoid Curtailment or Loss of Service
- Oregon Water/Wastewater Agency Response Network (ORWARN)
 - Water and wastewater provider members support each other in times of need with equipment, expertise, and staffing.





What do Water Providers need?



- Access to remaining stored water options in the state
- Support for infrastructure resiliency and modernization
- Support for innovative technology and water management strategies
- Multi-agency coordination and problem-solving