
COVID-19 Testing: Veterans and General Population

*Senate Interim Committee on Veterans and
Emergency Preparedness*

November 16, 2021

Dean Sidelinger, MD MSEd
State Health Officer and State Epidemiologist



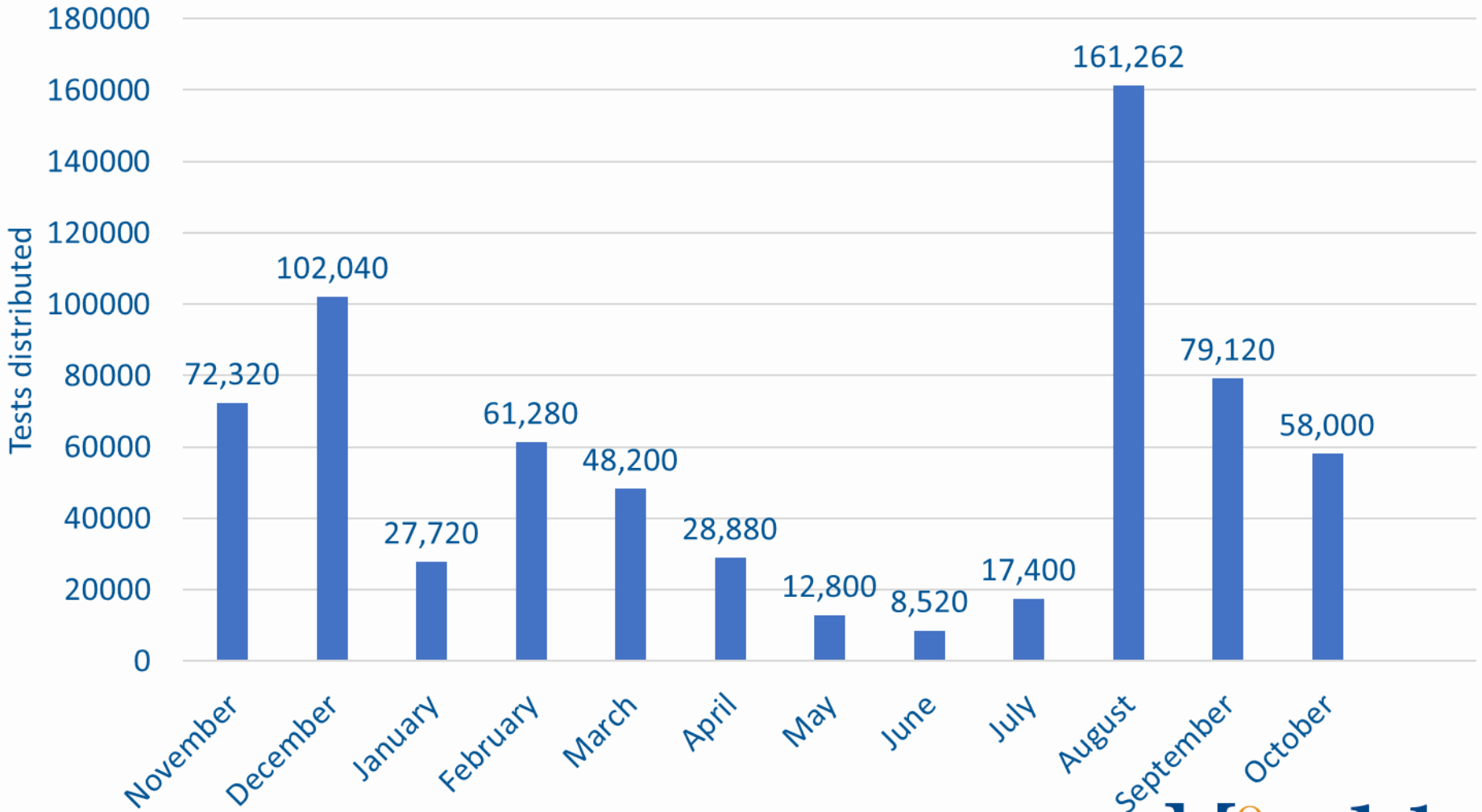
Testing capacity and availability

- The Delta surge has placed a significant strain on the COVID-19 testing supply chain *and* the health care systems that deliver tests
- Two types of tests for COVID-19
 - Rapid antigen point-of-care
 - Molecular (e.g., PCR) laboratory-based
- Rapid antigen (point-of-care) testing supply chain depleted nationally—with demand far exceeding supply
- Molecular testing supply chain partially intact—however, systems have limited ability to deliver tests to individuals

Testing capacity and availability

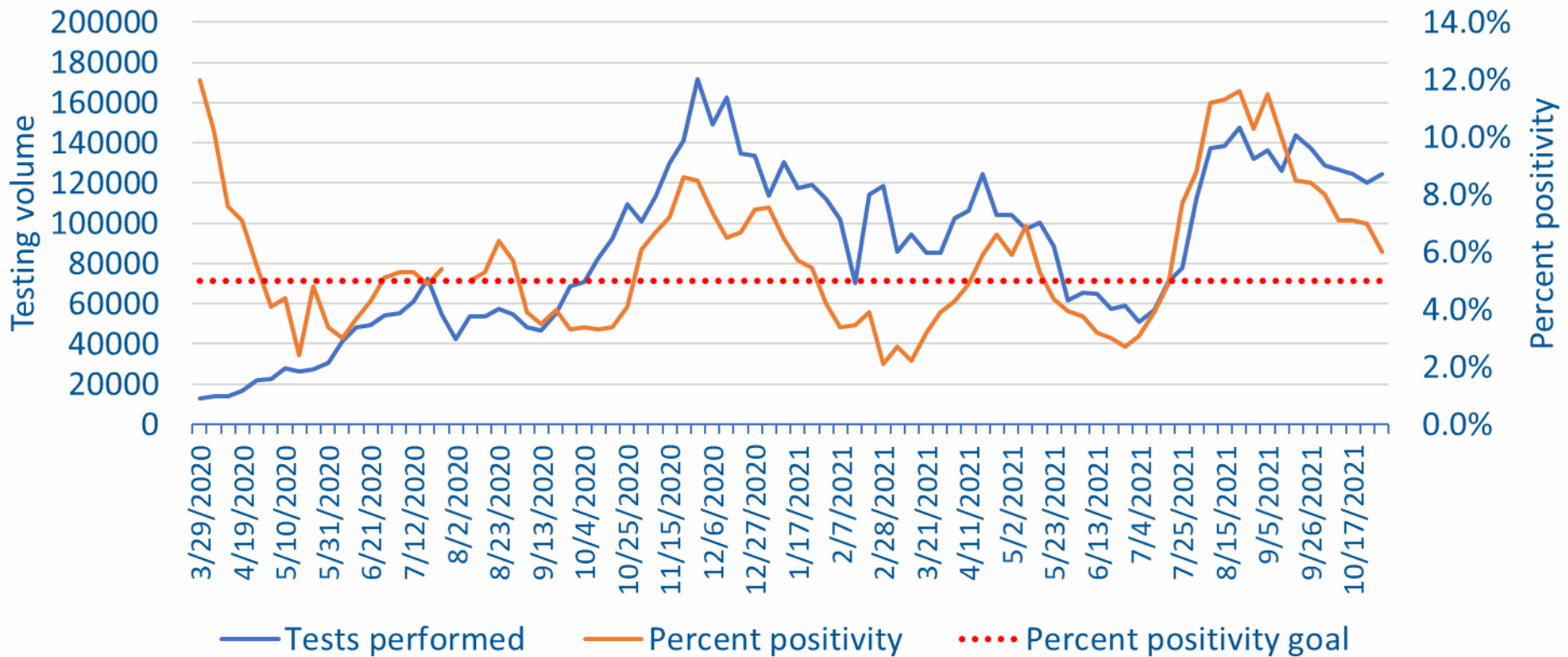
- Oregon has a federal allotment of Abbott BinaxNOW rapid antigen point-of-care tests that the manufacturer has been unable to fulfill until very recently
- Current stock on hand: 300,000
 - Almost all expire by end of year
 - Current allowance for use of expired supplies
- These tests are reserved for priority partners
 - Any health care provider serving Medicare or Medicaid patients
 - Long-term care facilities and other congregate care settings
 - Local public health authorities
 - Shelters and transitional housing
 - K-12 institutions

OHA Abbott BinaxNOW distribution 2020-21



Testing and percent positivity trends

- Testing volume has been insufficient relative to disease burden as reflected by percent positivity since Delta surge began



When to test

- Symptoms consistent with COVID-19, regardless of vaccination status
- Exposure to case of COVID-19, regardless of vaccination status

Watch for Symptoms

People with COVID-19 have had a wide range of symptoms reported – ranging from mild symptoms to severe illness. Symptoms may appear 2-14 days after exposure to the virus. Anyone can have mild to severe symptoms. People with these symptoms may have COVID-19:

- Fever or chills
- Cough
- Shortness of breath or difficulty breathing
- Fatigue
- Muscle or body aches
- Headache
- New loss of taste or smell
- Sore throat
- Congestion or runny nose
- Nausea or vomiting
- Diarrhea

How to find a test

- Visit OHA's COVID-19 Testing Website: <https://govstatus.egov.com/or-oha-covid-19-testing>
- Get Vaccinated Oregon includes a testing locator: <https://getvaccinated.oregon.gov/#/locator?lang=en>
- Test site finder from Castlight: <https://my.castlighthealth.com/coronavirus-testing-sites/>
- Test event locator tool: <https://www.doineedacovid19test.com/>
- Call 211

THANK YOU!