

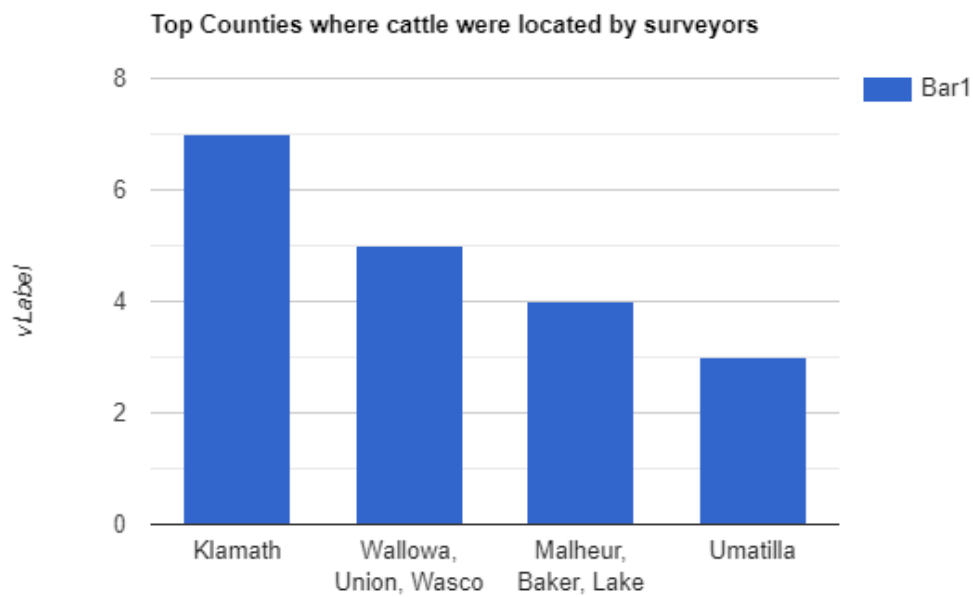


Oregon Cattlemen's Association

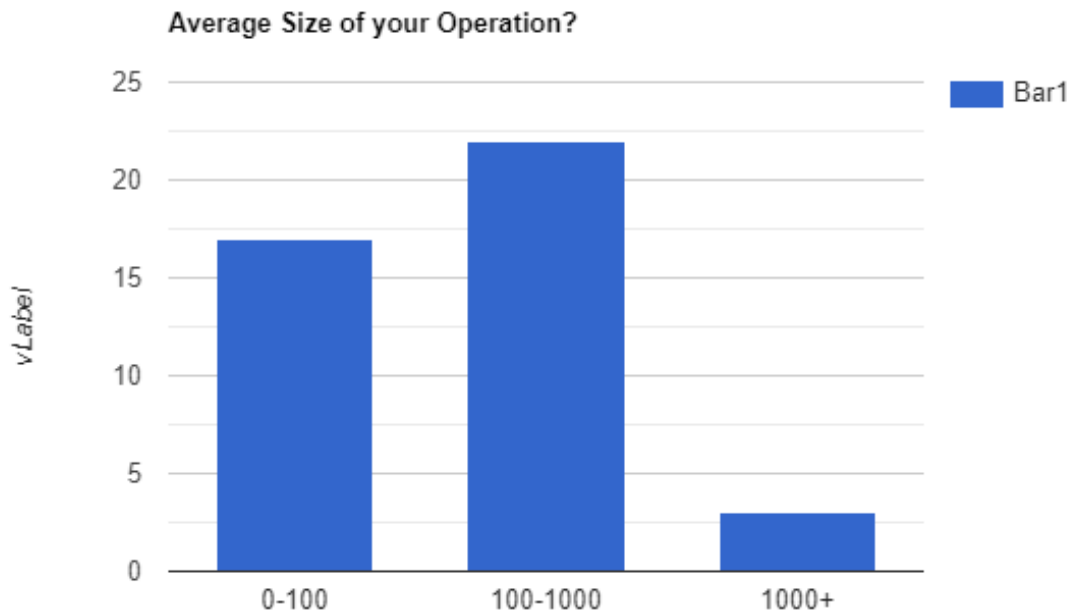
Voice Of The Cattle Industry Since 1913

2021 Producer Loss Survey Results

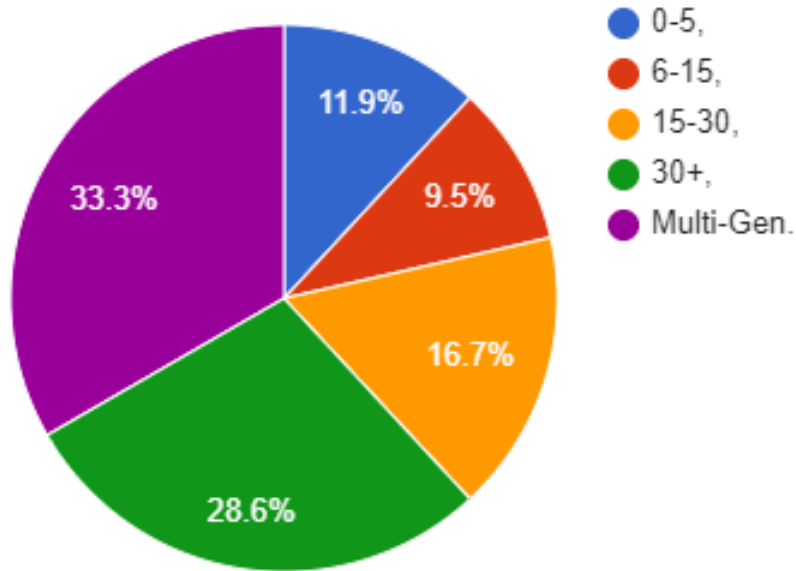
This survey was shared with OCA members and followers on OCA's Facebook page. The survey had 42 anonymous participants. Following are the significant results.



All Counties: Klamath, Wallowa, Union, Wasco, Malheur, Baker, Lake, Umatilla, Clackamas, Crook, Grant, Harney, Douglas, Coos, Jefferson, Sherman, Washington, Colombia, Clatsop, Morrow, Lane and Deschutes



How many years have you been in operation?



FIRE

Question: Are you currently impacted by fire?

Yes: 3 (Bootleg Fire) No: 39

Question: Have you lost cattle due to fire?

Yes: 1 No: 41

Question: Quantify Financial Loss from Fire:

Less than \$10,000: 2

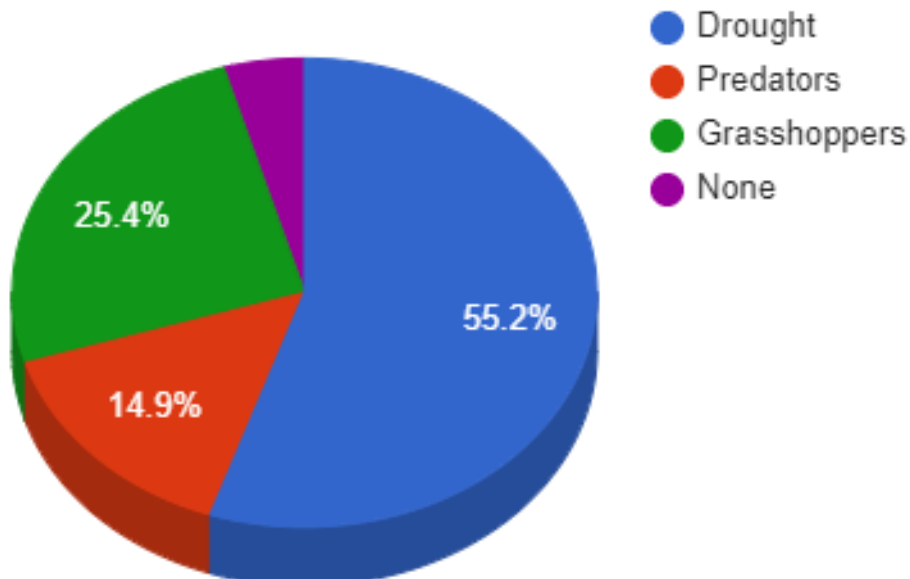
\$20,000: 1

\$200,000: 1

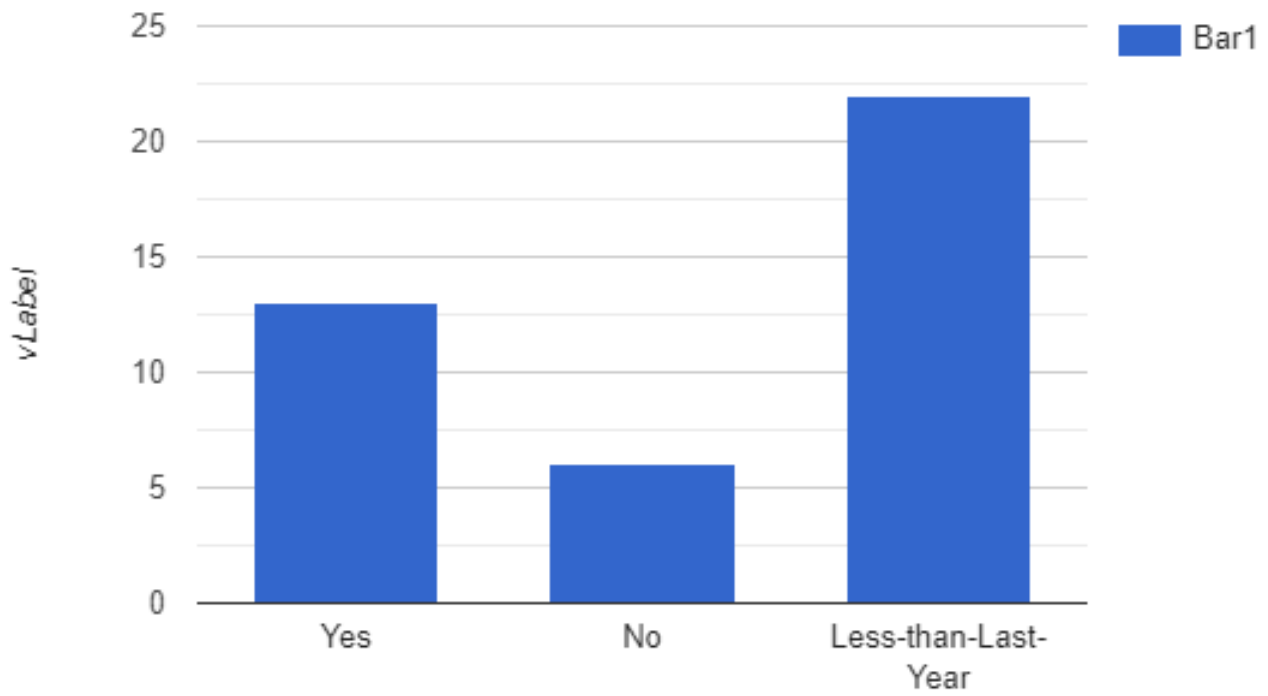
None: 18

Unknown at this time: 1

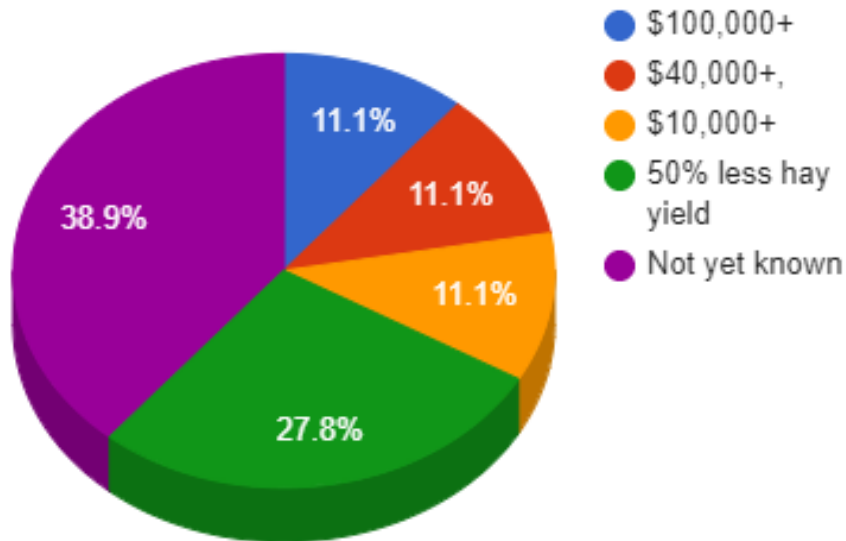
Have you experienced loss for any of the following?



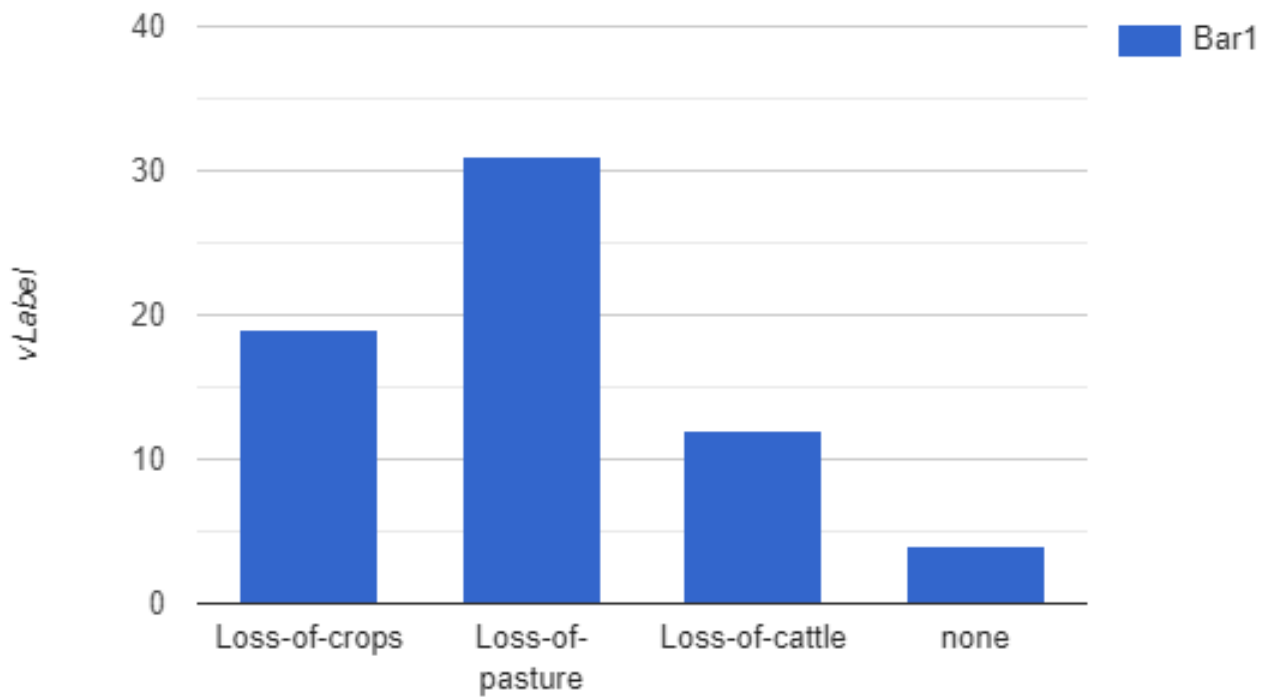
Do you have access to water right now?



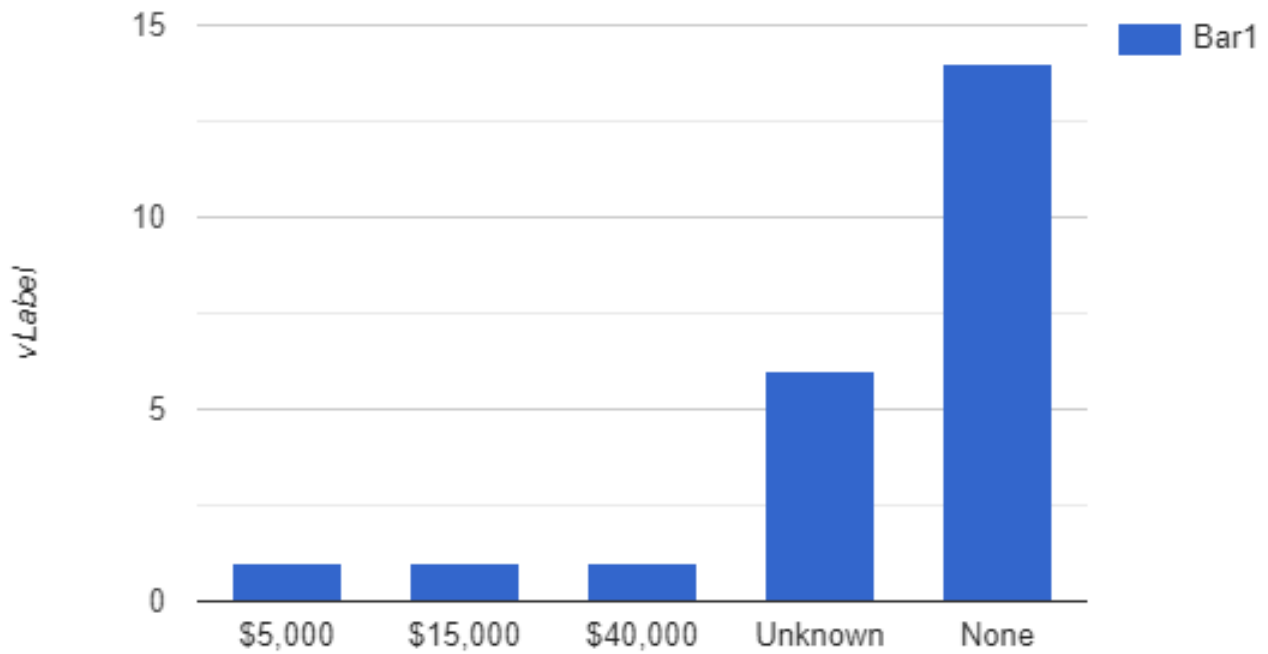
Financial Loss from lack of access to water:



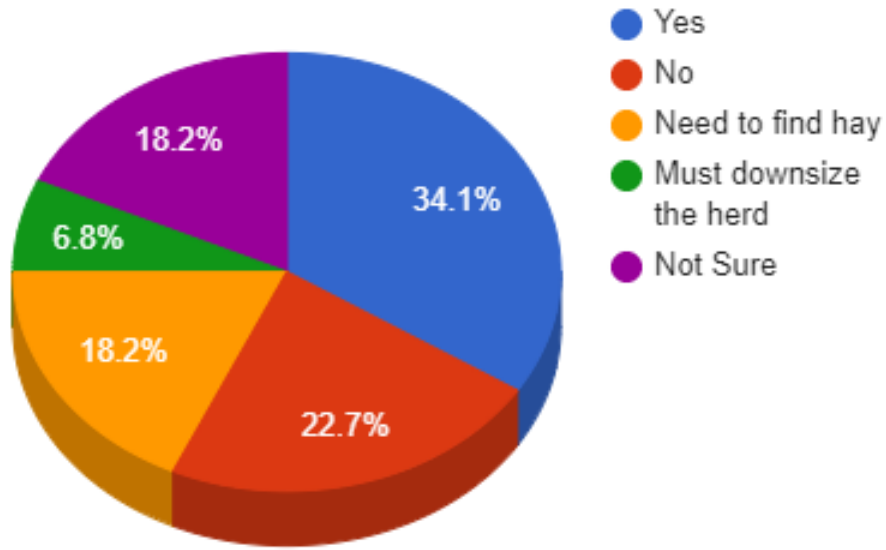
How has lack of access to water impacted you operation?



Financial Loss due to Grasshoppers/Crickets



Do you feel like you can provide for your cattle?



What is the #1 Resource you need for your operation?

