



11  
17  
21

# LESSONS LEARNED FROM TALENT: STRONGER TOGETHER

Healthy Sustainable Communities | [hscommunities.com](https://hscommunities.com)

House Special Interim Committee on Wildfire Recovery

November 17, 2021

11 a.m.

Jon Legarza, Principal



# The Almeda Fire: Devastating Impacts

**>750**

**homes were lost in  
the Talent  
Community**

**>60**

**businesses lost  
their place of  
business in Talent**

**>4,600**

**residents were  
displaced across  
Jackson County**

**>100**

**School District  
families have yet to  
find permanent  
housing**



# The Almeda Fire: Gaps in Housing

- 816** Homes Lost in the Talent Community
- 27** Totem Pole FEMA Units
- 53** Transitional Housing Sites on the Gateway
- 191** Building Permits Issued as of October 20th

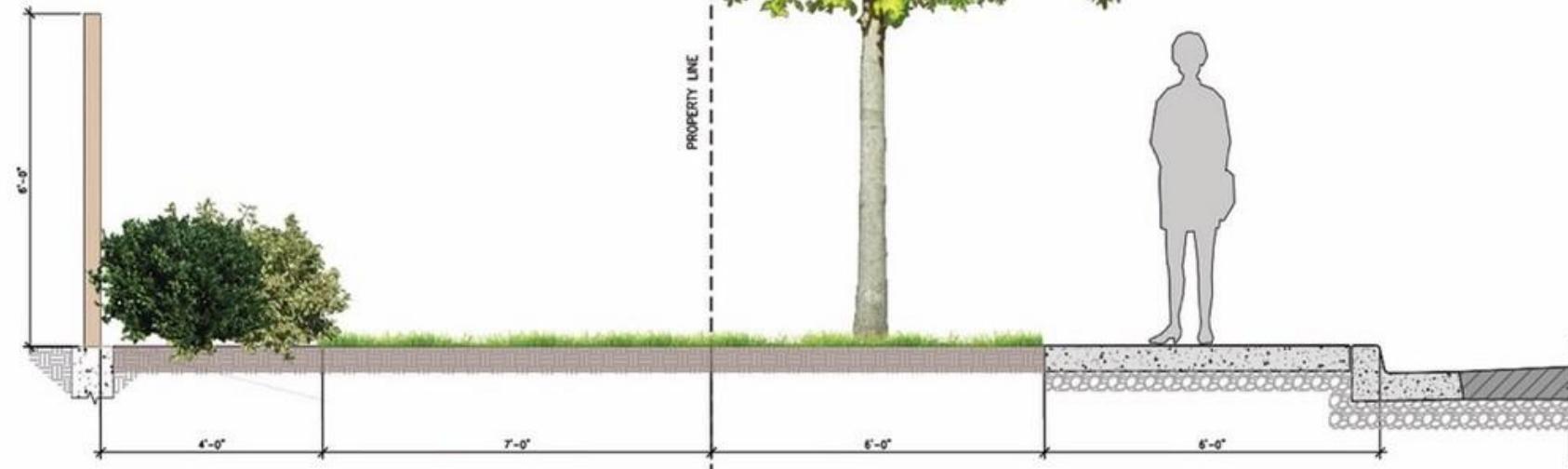
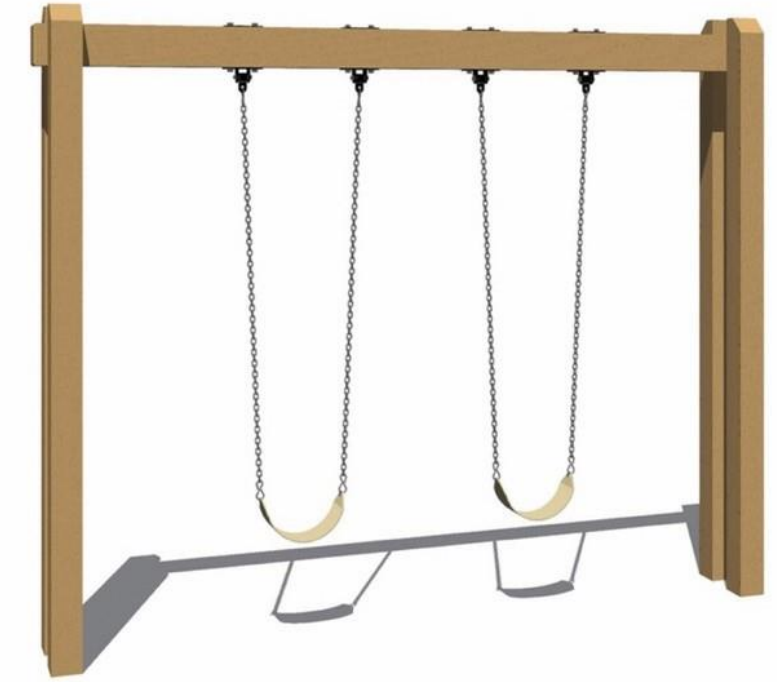
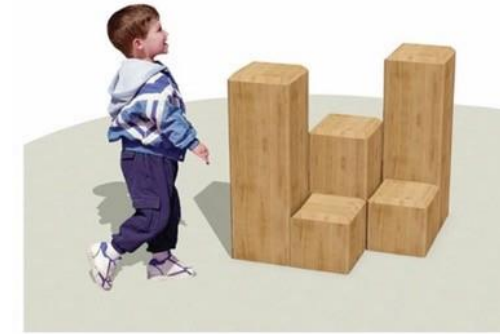
---

**545** (approximate gap in missing housing)





# Our Approach in Talent: Revisioning as a Community



FOOD TRUCKS



# Our Approach in Talent: Building Strong Partners





# Realizing the Gateway: For the Short and Long-Term





# Realizing the Gateway: For the Short and Long-Term





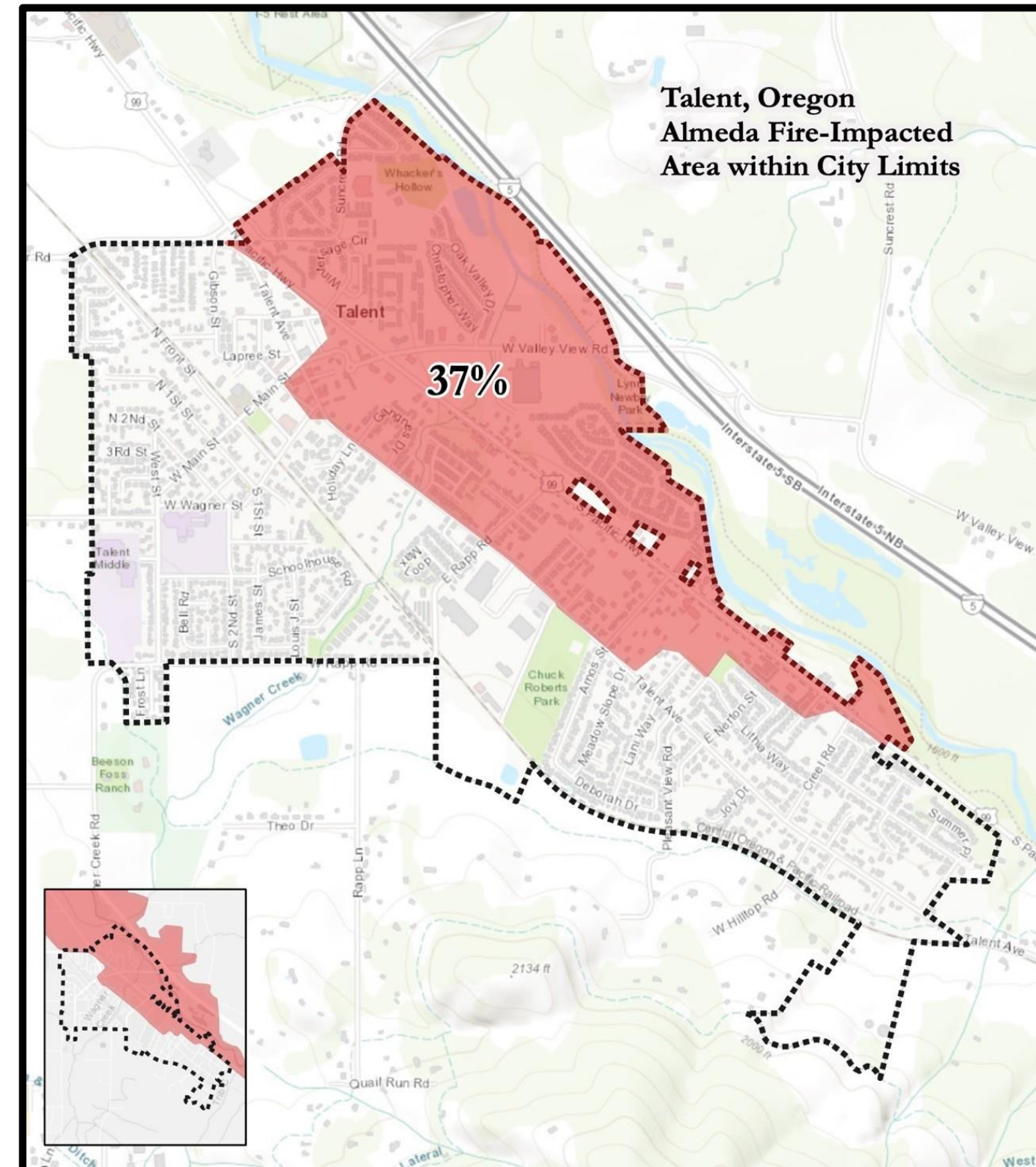
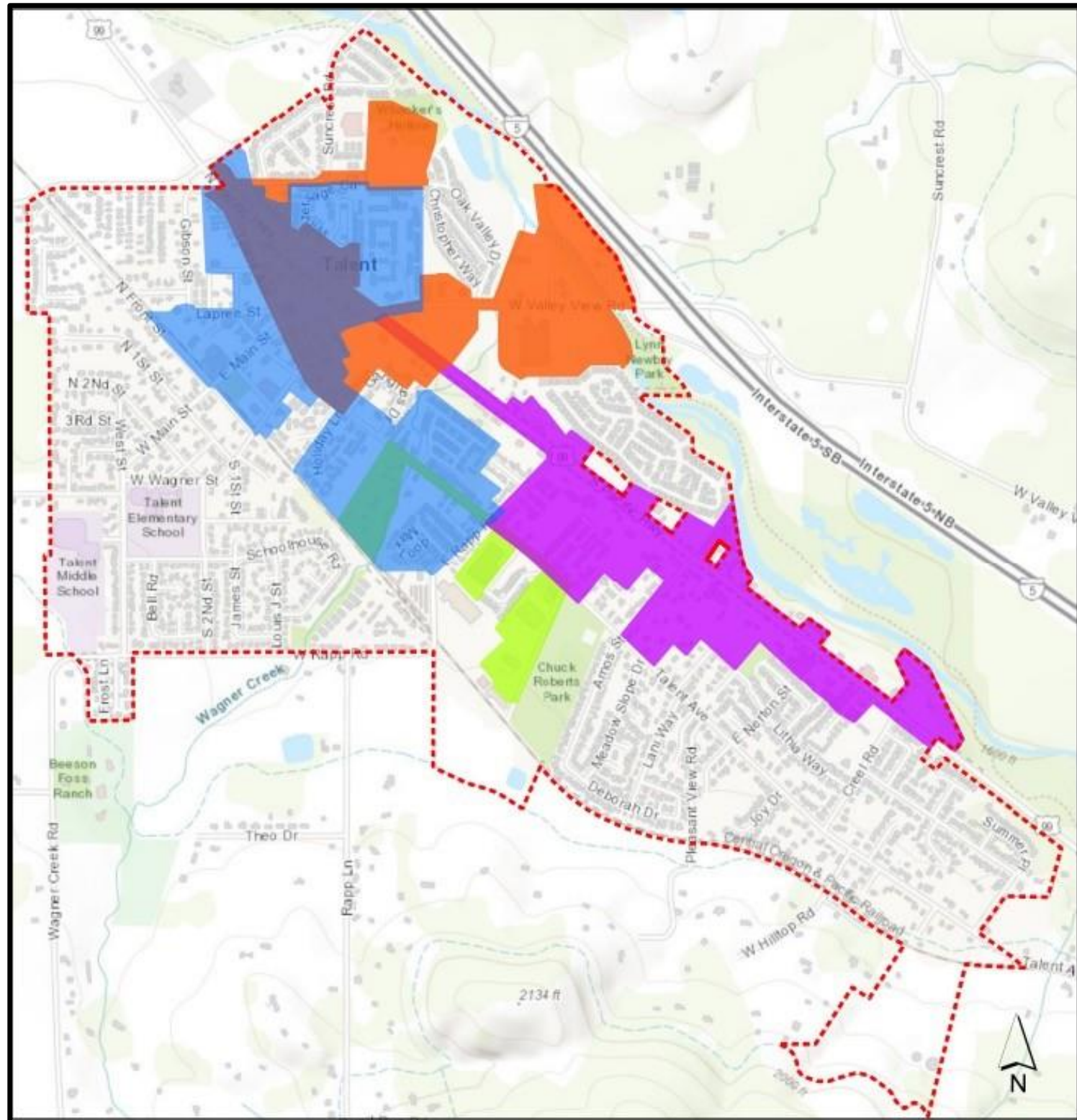
# Realizing the Gateway: For the Short and Long-Term



+90 Apartment Units



# Our Next Target: Long-Range Recovery Housing Opportunities





# Community Needs: Lessons Learned and Takeaways



- S** **PEED FUNDING** to jump-start innovative programs and projects
- T** **RANSITIONAL HOUSING** for the short and long-term
- R** **ECOVERY PLAYBOOK** to guide communities through the complex process
- A** **FFORDABLE HOUSING** funding driven to fire and disaster-torn areas
- T** **IMELINES** that track and coordinate rebuilding across actors
- E** **NGAGEMENT** with all community members – especially underrepresented minorities
- G** **RANTS** targeted at businesses and residents impacted by the disaster
- I** **NFRASTRUCTURE** we must think about long-term rebuilding within communities
- C** **OMMUNITY** funding set aside for creative, community-driven projects in disaster areas





# KEY INSIGHT: REBUILDING STRONGER TOGETHER

Healthy Sustainable Communities | [hscommunities.com](https://hscommunities.com)

House Special Interim Committee on Wildfire Recovery

Jon Legarza, Principal