



A 501 C-3 Not-for-Profit Housing Development

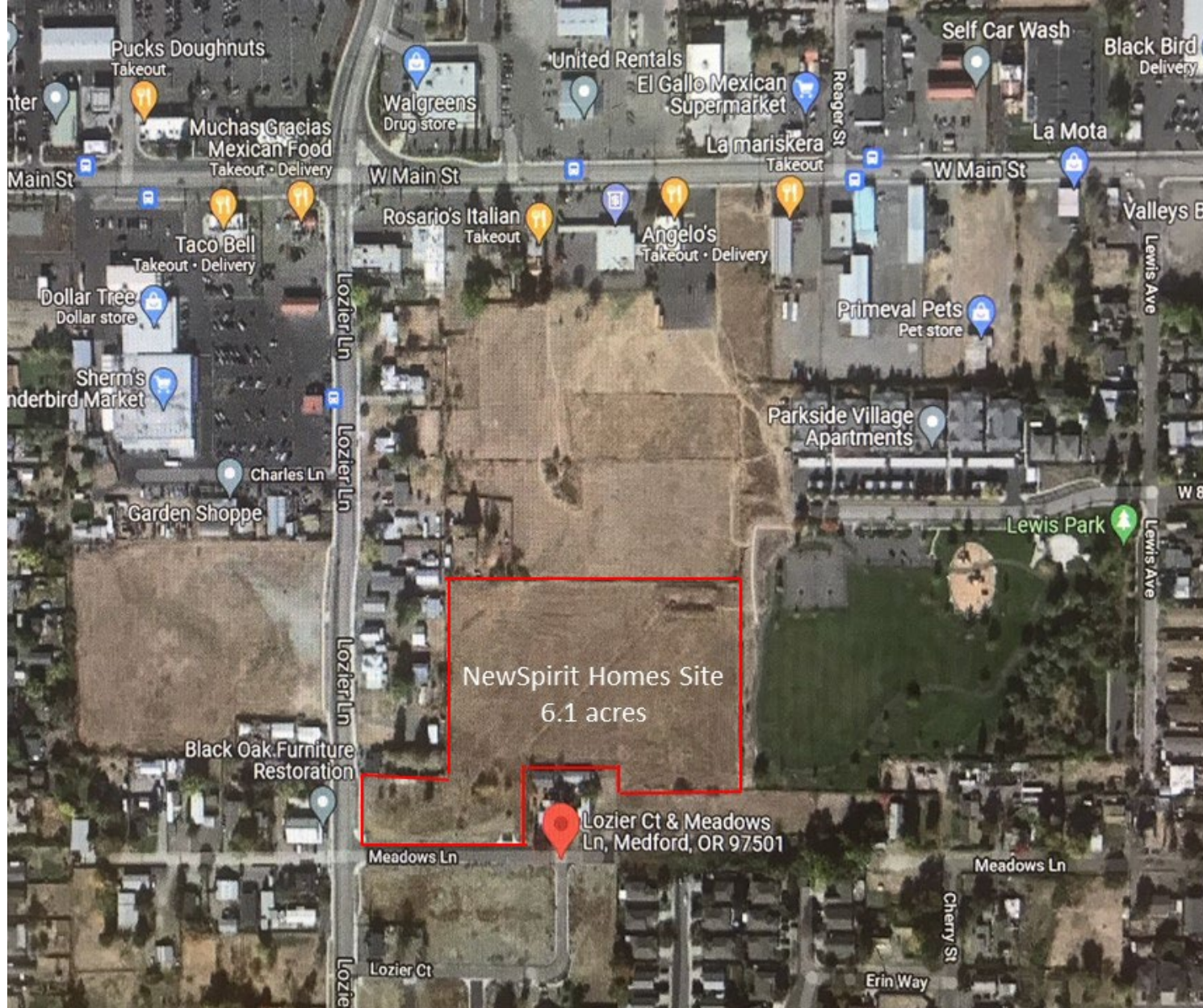
An innovative neighborhood development in Medford, Oregon

A prototype community of 80 owner-occupied homes, built on a 6 acre site, that are:

- **Permanent**
- **Affordable**
- **Fire Resistant – 3-D Concrete printed walls**
- **Designed to address inadequate low-cost housing and multi-generational financial inequity**

Includes a Community Center with Neighborhood Services and Day Care

Designed to be a replicable prototype for community-based design across the United States.



NewSpirit Village – Medford Oregon

Site location near shopping and adjacent to Lewis Park



A new neighborhood of 80 homes with a Community Center and private streets



Private Streets



Typical House with front porch and shutters



Two Bedroom / Two Bath Plan – 884 sf

Floor Plans vary from One Bedroom at 626 sf to Three Bedroom at 1,076 sf



3-D Concrete Printed Walls

Watch 2-minute video: https://www.youtube.com/watch?v=Sdpn_oYXxAs