

Oregon's State Rehabilitation Council and Vocational Rehabilitation

Supporting people with disabilities to find and maintain competitive integrated employment.

Economic recovery starts here!



What is Vocational Rehabilitation (VR)?

- **Our Mission:** Assist Oregonians with disabilities to achieve, maintain and advance in employment and independence.
- **Our Vision:** Every Oregonian with a disability who desires to work is given the means and opportunity.
- VR is a federal-state program that helps people who have physical or mental disability get or keep a job.
- VR is committed to helping clients achieve competitive integrated employment.
- VR staff provide a variety of supports to ensure successful outcomes for clients.
- Funds are supplied jointly by the federal and state governments with an 80/20 match.

VR Core Services

Individualized Plans may include:

- Counseling and Guidance
- Results of Disability Evaluation
- Defining Interests
- Additional Training
- Worksite Modifications
- Identifying Helpful Assistive Technology
- Transitional Services for Students
- Consultation to Employers
- Job Placement Assistance
- Job Coaching
- Other Individualized Services





Susie Calhoun

Vice-chair
121 Tribal VR



John DeRosa

Business, Industry and
Labor



Steve Paysinger

Former VR Consumer (Chair)



Ed Cortez

Business, Industry
and Labor



Mary Jo Erickson

Youth Transition
Program



Kim Poage

Advocate, Rehabilitation
Counseling Educator



Bridget Dazey

Workforce and Talent
Development Board



Cecilia Fiorello

Advocate and Former
VR Consumer



Emily Purry

Business, Industry and
Labor



Brenda Dennis

Supported
Employment



Anais Keenon

Business Representative
and Advocate



Matthew Serres

Oregon Client
Assistance Program



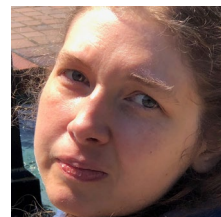
Toni DePeel

VR Pre-Employment
Transition
Coordinator



Jorge Martinez

Community
Rehabilitation Provider

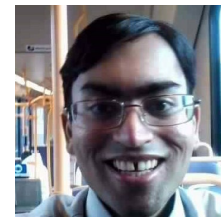


Elizabeth Lortscher

VR Consumer

Christy Reese

Parent Training Information



Sunil (Neal) Narayan

VR Consumer and Advocate

- **902,000 Oregonians live with a disability, that is 26% of the state's population**
- **Prior to the pandemic, persons with disabilities were employed at a rate of 44%, whereas those without disabilities were employed at a rate of 78%. That employment gap of 34% has expanded during the pandemic.**

worksource | OREGON