

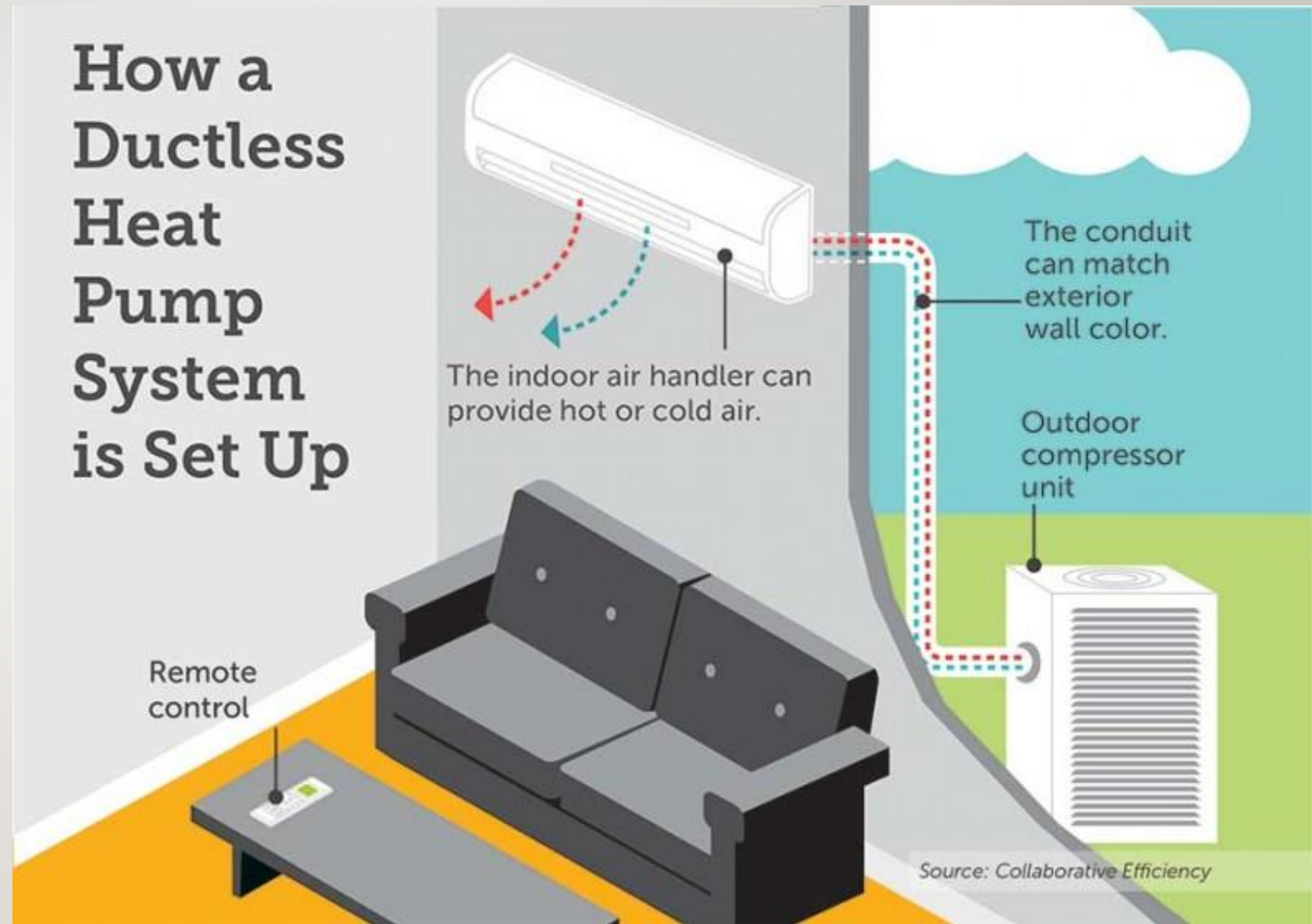
# Energy Efficient Tools To Reduce Health Impacts Related To Air Quality And Extreme Temperatures

House Interim Committee on Environment and  
Natural Resources

September 22, 2021



- Mini-split ductless heat pumps have two components:
  - Outdoor compressor
  - Indoor air-handler
- A hide-line encloses the power cable, refrigerant tubing, suction tubing, and condensation drain, connecting the two units.
- Ductless systems recycle air from inside the home, so there is no air exchanged between the inside and outside.



# BENEFITS OF A DUCTLESS HEAT PUMP (DHP)

---

- No ductwork required
- Uses less energy than zonal heat sources, costs less to operate
- Versatility of where DHPs can be installed
- Safe to use when air quality is poor
- No noise pollution

# SALEM ELECTRIC'S DUCTLESS HEAT PUMP PROGRAM

---

- Nearly 900 DHPs have been installed on our system
- Available Incentives
  - \$1,000 – Homes with existing electric heat (zonal or forced air heat)
  - \$1,000 – Multi-family housing
  - \$750 – Homes with existing heat pumps, manufactured homes, or non-electrically heated homes
  - \$500 – Commercial buildings

# COOPERATIVE DUCTLESS HEAT PUMP PROGRAMS

---

## **Total 2020 Ductless Heat Pump Installs**

- Central Electric Cooperative – 36 (33 low-income)
- Coos-Curry Electric Cooperative – 78
- Lane Electric Cooperative – 185 (39 low-income)
- Midstate Electric Cooperative – 38
- Umatilla Electric Cooperative – 11

# QUESTIONS?

---

Britni Davidson, Member Services Manager  
Davidson@SalemElectric.com

