

# Climate Change and Public Health

Kathleen Johnson  
Sr. Program Coordinator  
Washington County

Brendon Haggerty  
Sr. Research Analyst  
Multnomah County

March 2, 2020



WASHINGTON COUNTY  
OREGON  
Department of Health and Human Services



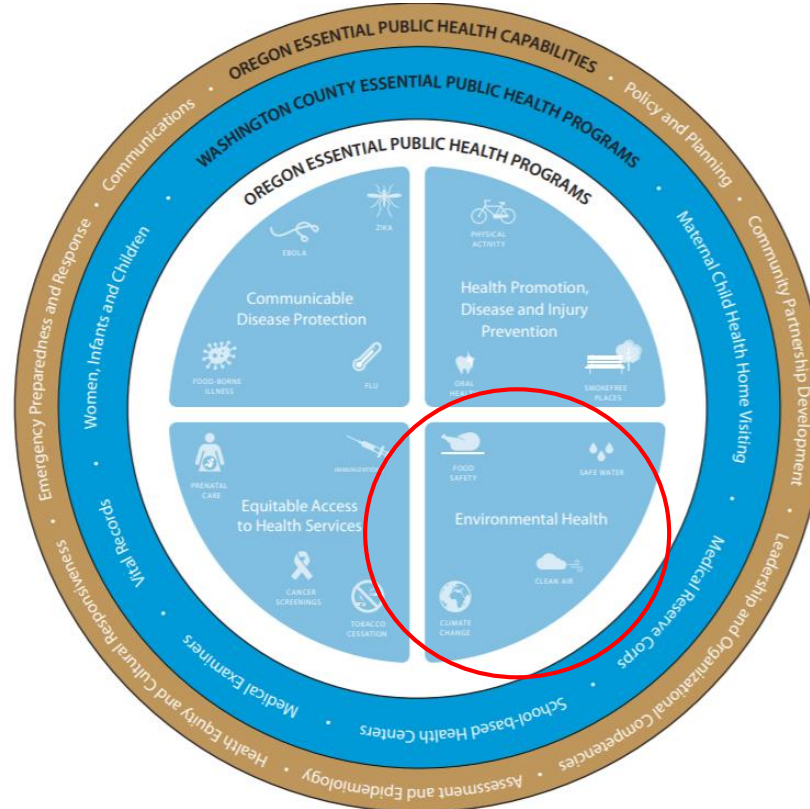
**Tackling climate change could  
be the **greatest global health**  
**opportunity** of the 21st century**

– The Lancet Commission

LHDs are already dealing with the health impacts of climate change in communities across the United States. However, nearly 9 out of 10 health directors believe that their LHD lacked sufficient resources needed to protect their communities from these health impacts.

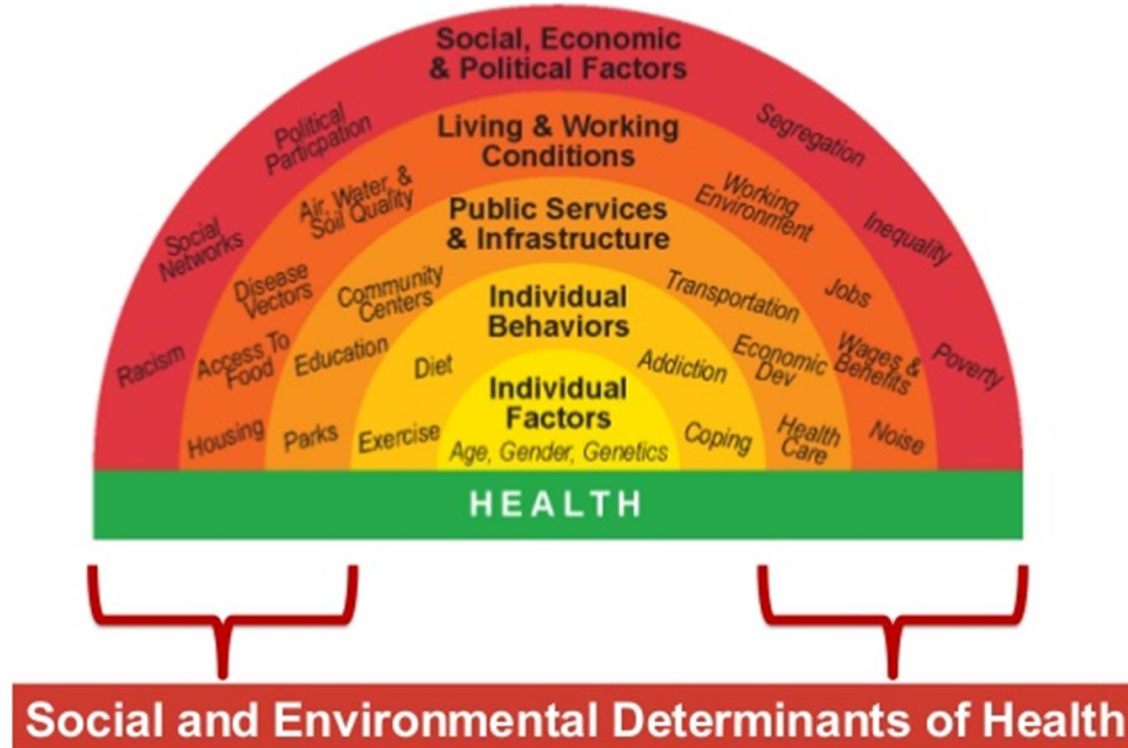


# Climate Change & Public Health Modernization



# Equity and Climate Change

5



# Impacts to the Tri-County Region

6

- ❑ Heat waves
- ❑ Extreme weather events
- ❑ Conditions that promote the spread and growth of disease-causing insect and bacteria population
- ❑ Poor air quality

Regional Climate and Health Monitoring Report:

<https://www.co.washington.or.us/HHS/News/reports-and-publications.cfm>

# Extreme Heat

7



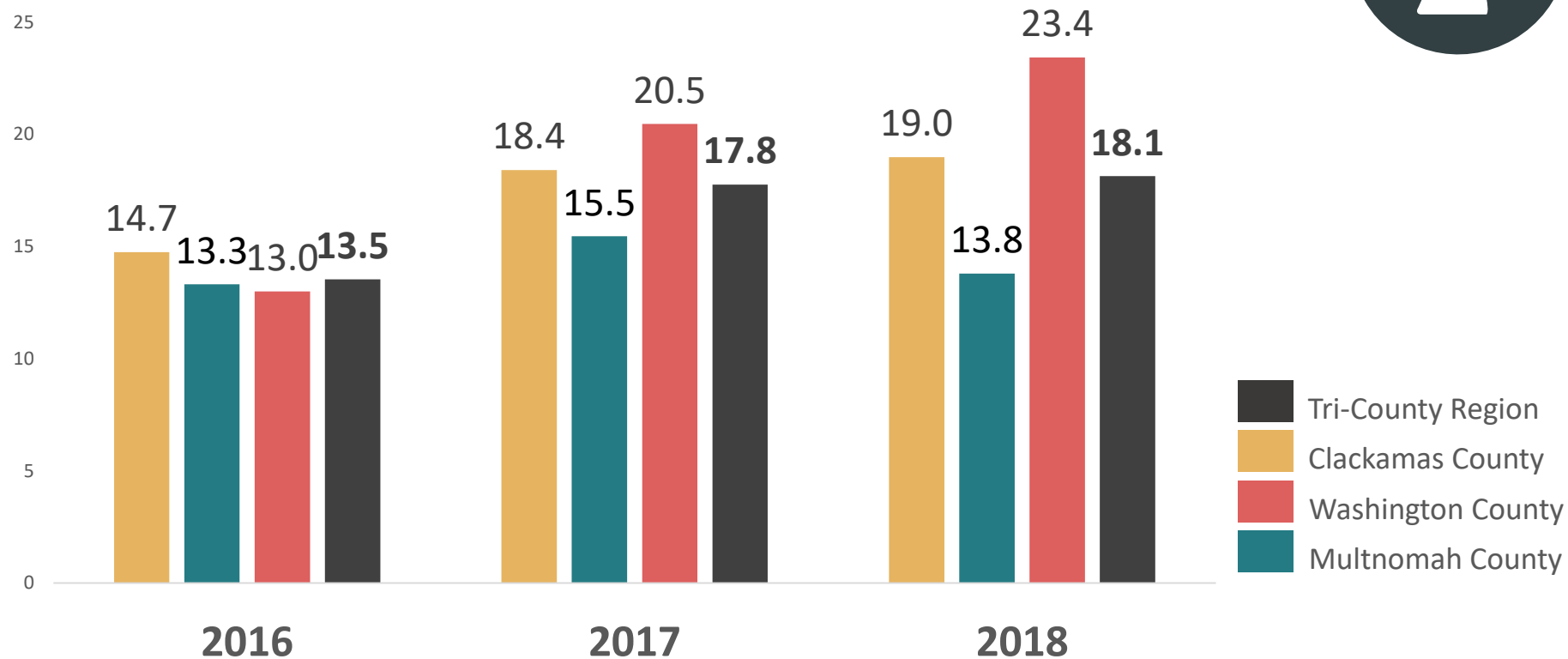
One of the most direct health impacts of climate change is increased exposure to hotter temperatures.

Indicators:

- ❑ Heat-Related Emergency Room Visits
- ❑ Heat-Related Hospitalizations
- ❑ Heat Deaths

# Heat-Related Emergency Room Visits

Rate per 100,000, 2016-2018, ESSENCE





# Vector-Borne Disease

9



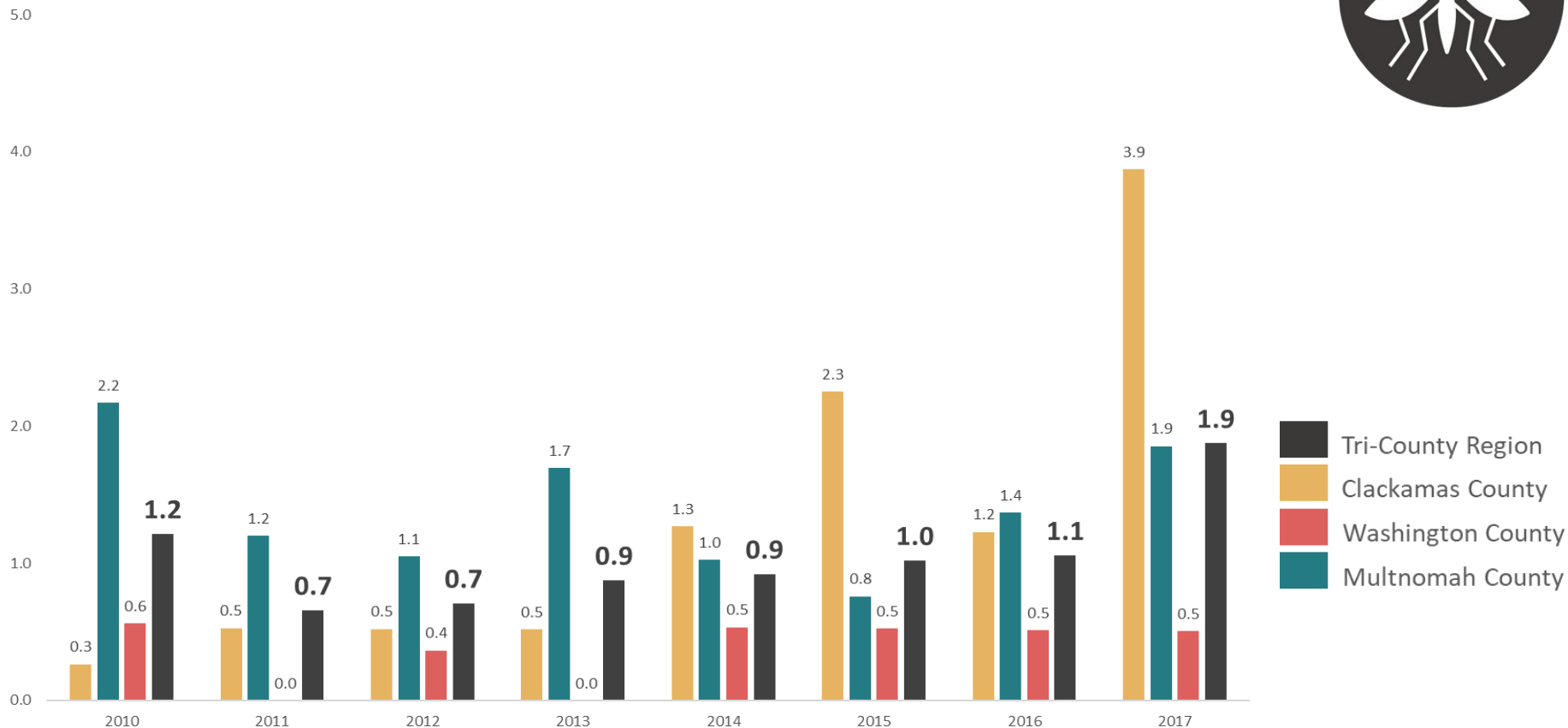
Climate change influences the habitat, survival, and seasonality of insects that carry disease.

Indicators:

- ❑ West Nile Virus
- ❑ Lyme Disease

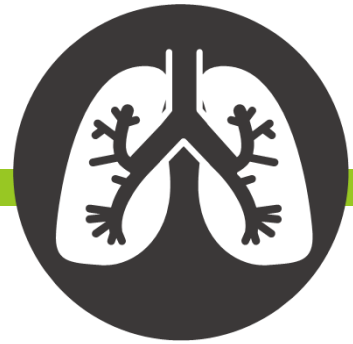
# Lyme Disease

Rate per 100,000, 2016-2018, ESSENCE



# Air Quality

11



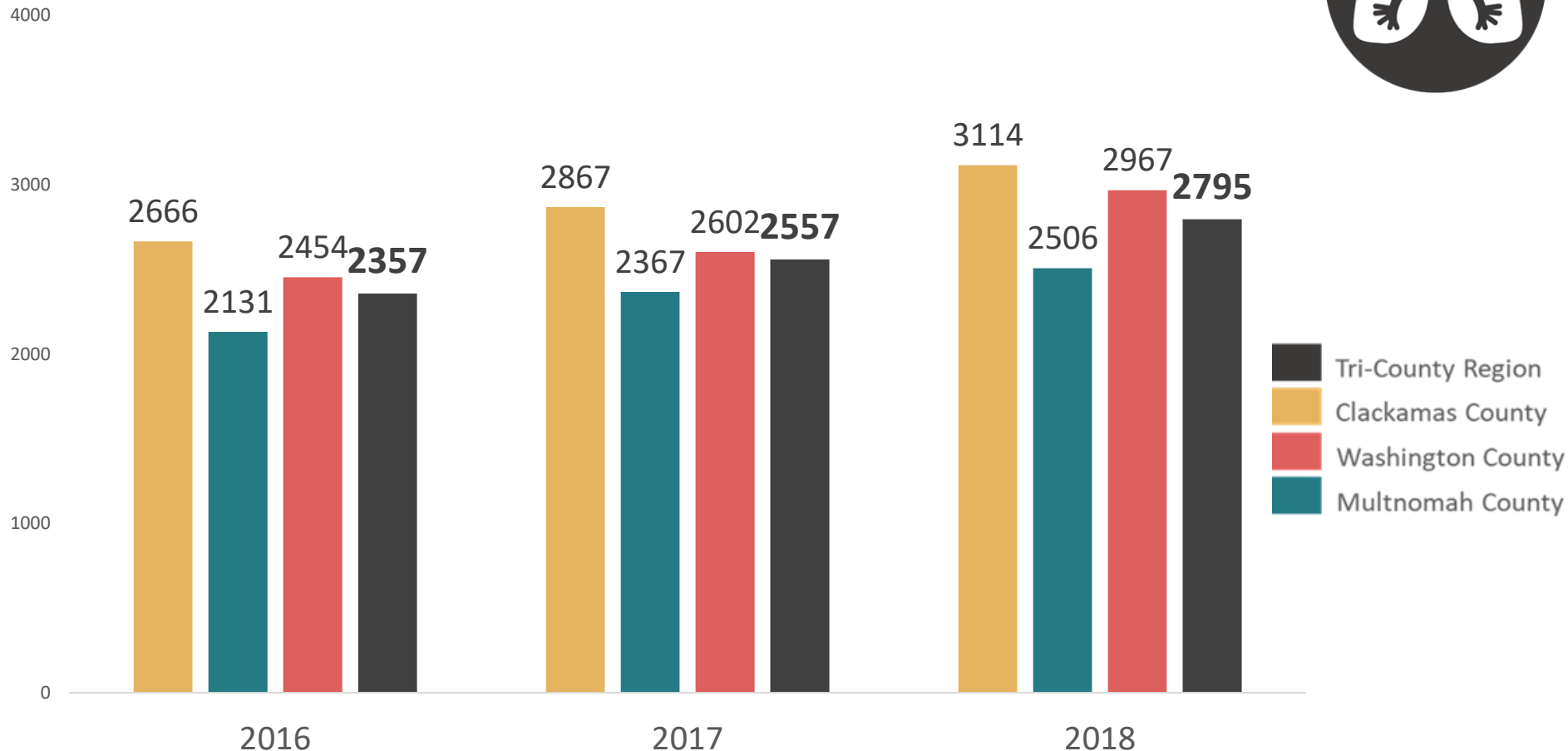
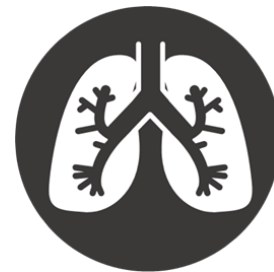
Warmer temperatures and less high-altitude snowpack create dryer and longer summers that increase the risk of wildfires that worsen air quality.

Indicators:

- ❑ Asthma-like Symptom Emergency Department Visits
- ❑ Allergic Emergency Department Visits

# Asthma-Like Symptom ED Visit

Rate per 100,000, 2016-2018, ESSENCE



# Other Impacts to Health and Well-Being

13

- ❑ Mental health
- ❑ Water quality
- ❑ Animal Health
- ❑ Food and nutrition



# Contact Information

14

Brendon Haggerty  
Sr. Research Analyst  
Multnomah County

[Brendon.haggerty@multco.us](mailto:Brendon.haggerty@multco.us)

Kathleen Johnson  
Sr. Program Coordinator  
Washington County

[Kathleen\\_johnson@co.Washington.or.us](mailto:Kathleen_johnson@co.Washington.or.us)