

House Committee on Veterans and Emergency Preparedness **Oregon Vietnam War Memorial**



February 20, 2020



Steve Bates, President Oregon Vietnam War Memorial Fund

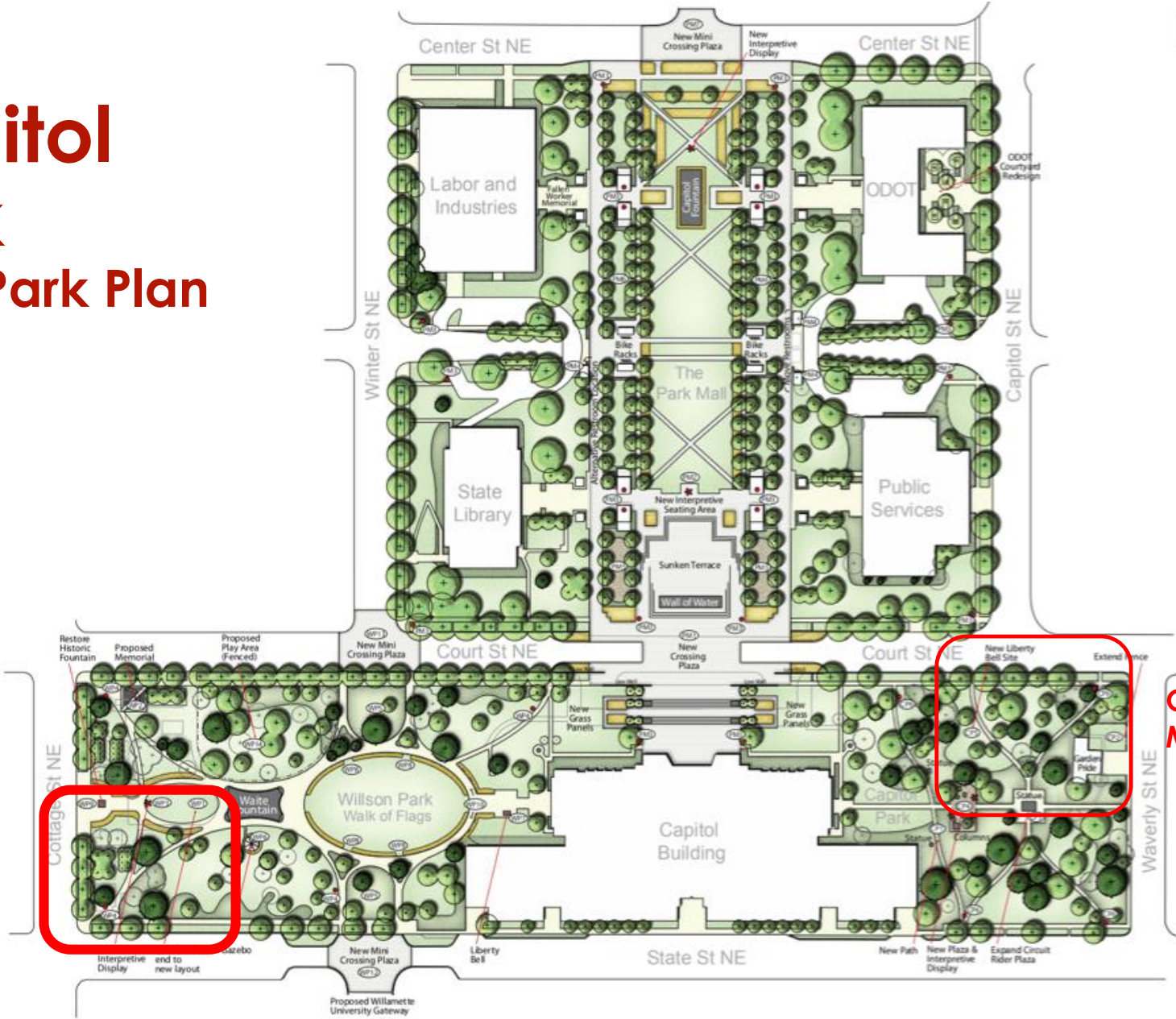
Mike Abbaté, FASLA Landscape Architect



State Capitol State Park

2010 General Park Plan

State Capitol State Park Site Improvement Plan

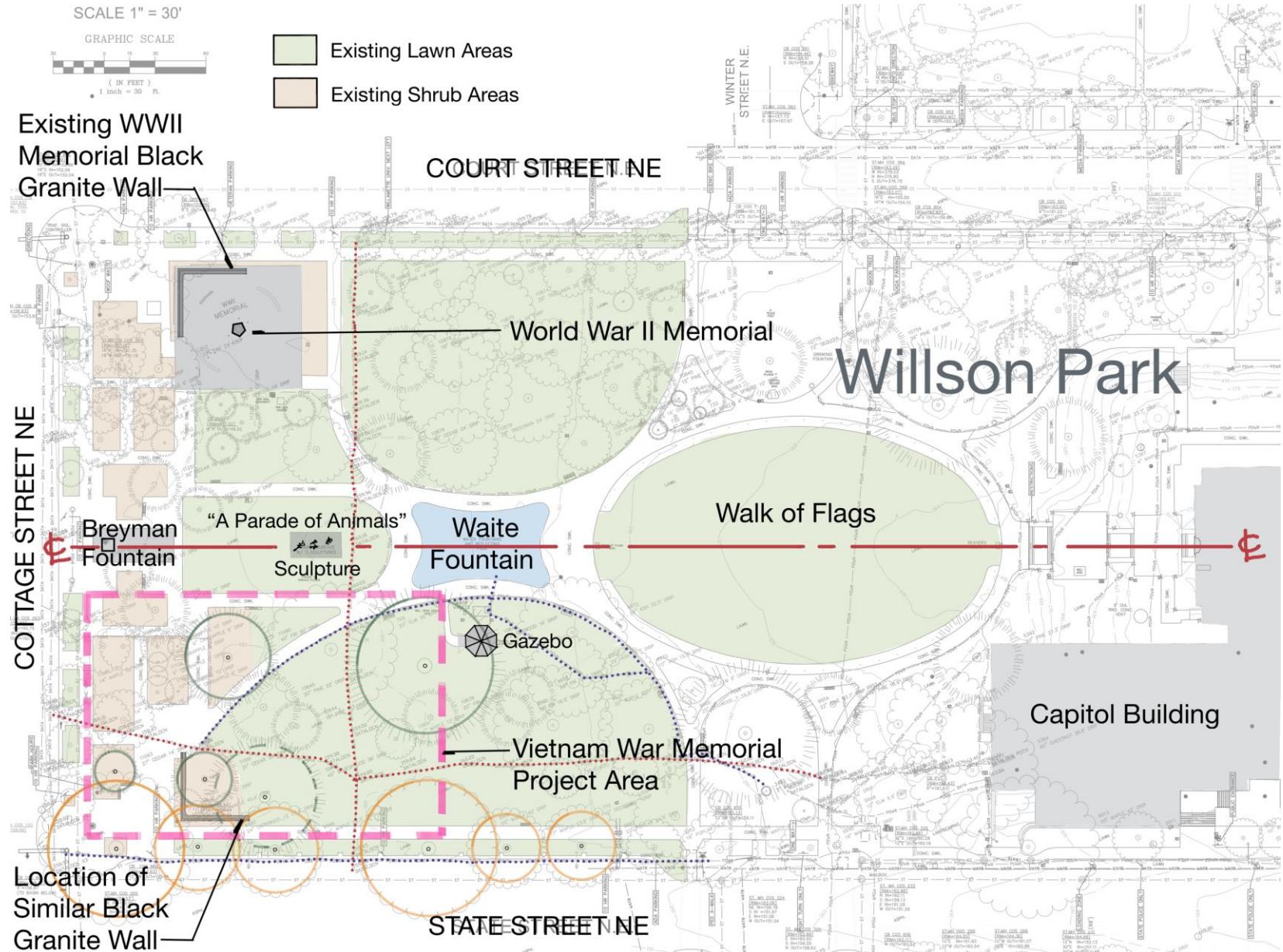


**Current Proposed
Memorial Site**

**Original Proposed
Memorial Site**



Site Context



02/20/20



Site Photos



Looking SE at WWII Memorial Site



Looking NE at Vietnam War Memorial Site

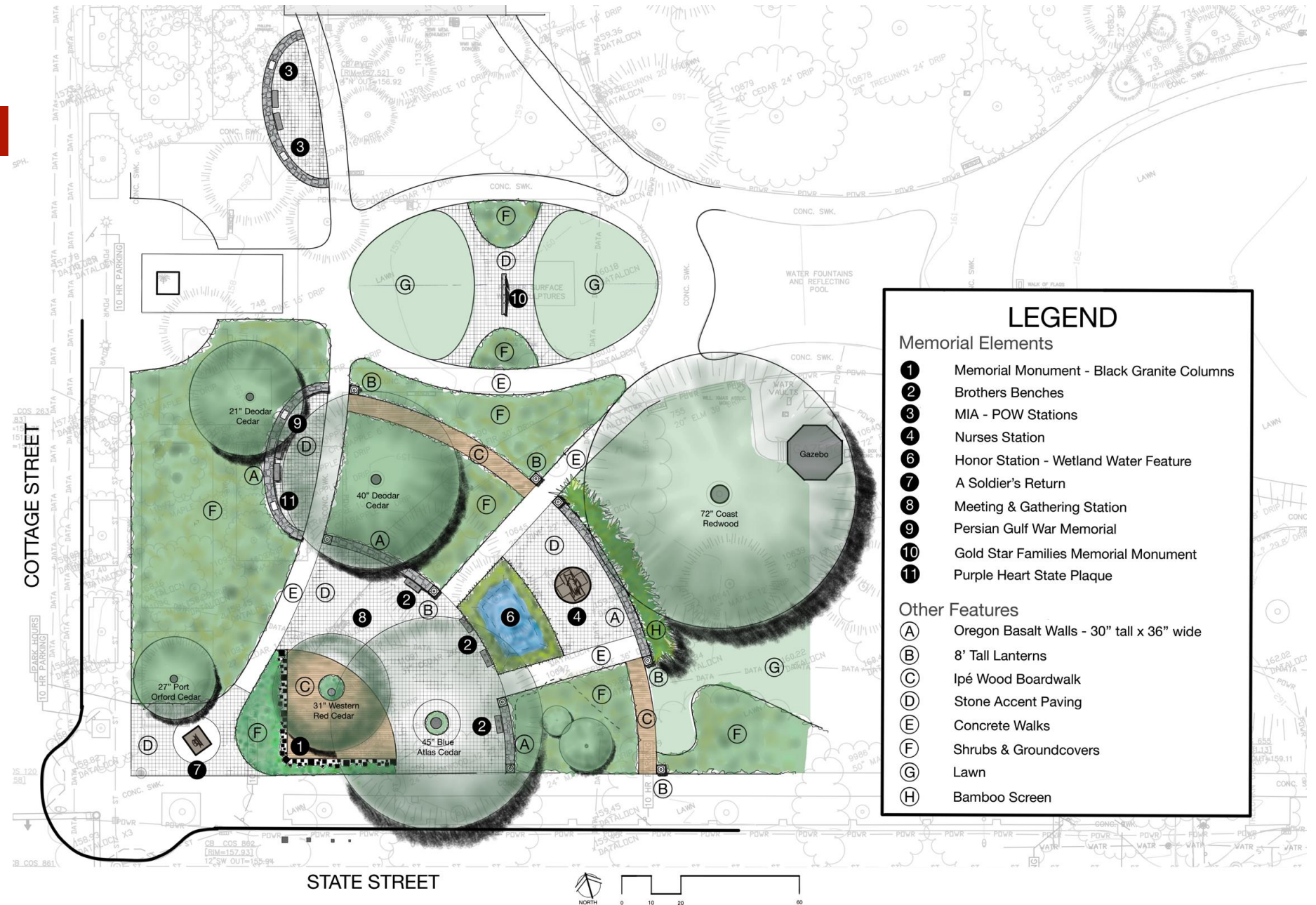


02/20/20





Memorial Plan:



02/20/20



Design Concept: Comparing the Wars & the Oregon Capitol's Memorials

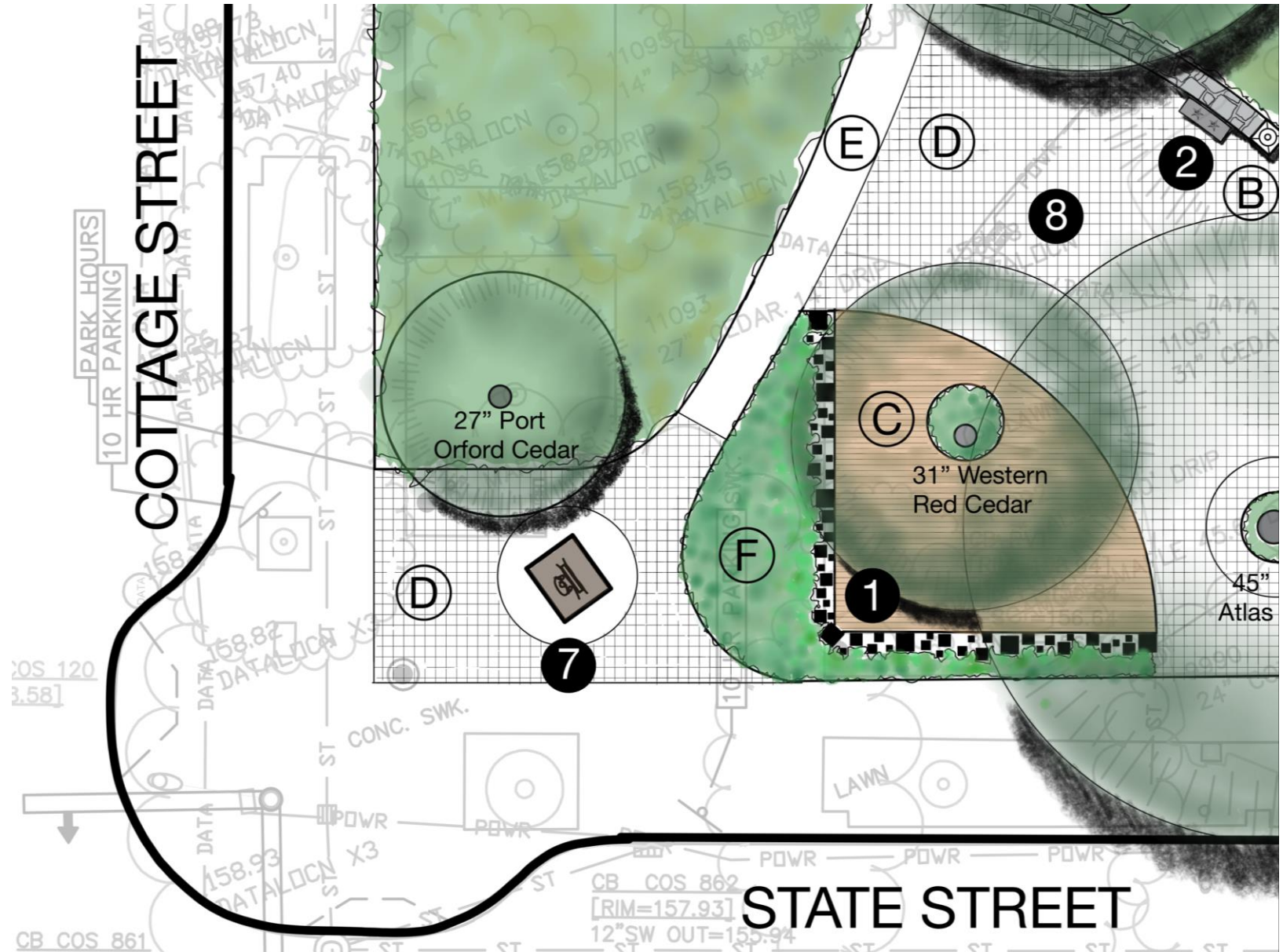
	WWII	Vietnam
WAR	Solid Public Support	Fractured Public Support
	Vets Welcomed Home	Vets Ignored or Insulted
	Moms & Dads	Sons & Daughters

	WWII	Vietnam
MEMORIAL	Square Corners	Arcs & Curves
	No Nature	Embrace Nature
	Made of the World	Made of Oregon



02/20/20

Schematic Design Plan: SW Corner



02/20/20



Design Images: View at Memorial Entry @ Cottage & State Streets



02/20/20



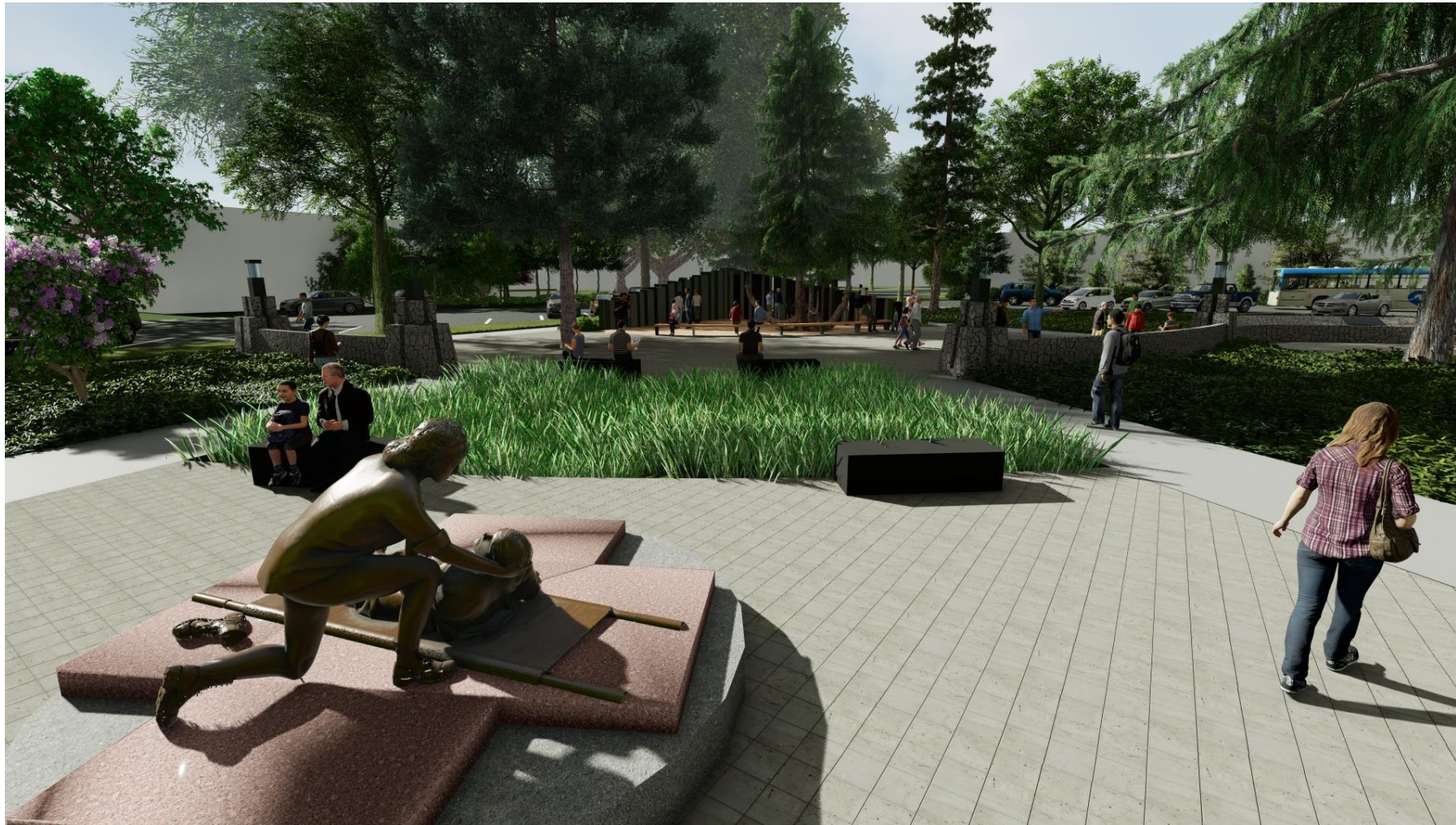
Design Images: View SE across Meeting & Gathering Plaza



Design Images: View of Inscribed Column Wall with “Embracing Tree”



Design Images: View SW with Nurses Sculpture and “Rain Paddy”



Design Walkthrough Video:

<https://youtu.be/pWkHHUxORiY>



2/5/20



House Committee on Veterans and Emergency Preparedness **Oregon Vietnam War Memorial**



For more information:

www.vietnamwarmemorialfund.org

February 20, 2020



Steve Bates, President Oregon Vietnam War Memorial Fund

Mike Abbaté, FASLA Landscape Architect

