

# Oregon Child Welfare Program Update

Joint Committee on Ways and  
Means Subcommittee on  
Human Services  
February 17, 2020

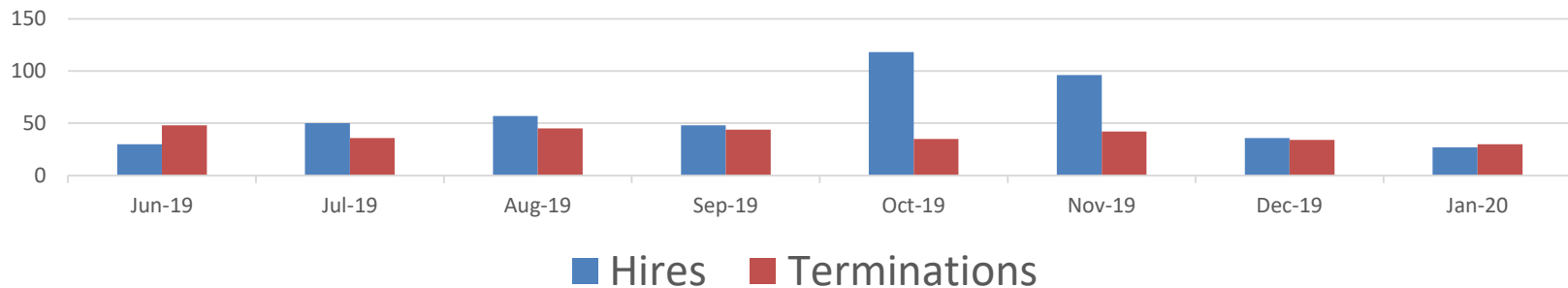


# Program Updates

## Staffing

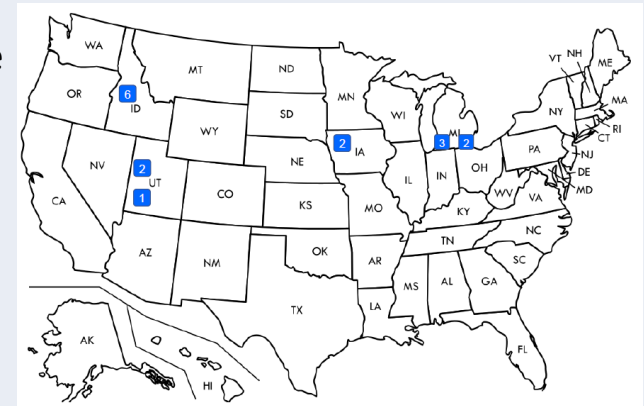
- A training manager has been hired and is beginning to develop a plan for building the training unit and identifying the highest priority training needs of the field.
- Child Welfare is also bringing on a new workforce development deputy in mid-March.
- We have hired more than 460 field staff since June 2019, for a net increase of about 150.

## Workforce



## Out-of-State Placements

- DHS plans to hire a Medical Director to perform clinical reviews for out-of-state placements. A candidate has been identified.
- 16 children and young adults in 6 programs are currently placed out-of-state. The number has remained stable since the end of January 2020.
- Child Welfare has developed a [map](#) and provided [demographic information](#) for out-of-state placements on its website.
- Senate Bill (SB) 1566 introduces requirements related to the placement of children in out-of-state child-caring agencies and requires Oregon to license these programs.



# Program Updates: Hotline

	Contacts	Screening Reports	Assigned
April	18,567	8,445	4,473
May	17,232	9,120	4,872
June	14,540	6,683	3,595
July	13,745	6,554	3,726
Aug.	13,788	6,590	3,636
Sept.	17,555	7,386	4,107
Oct.	20,929	8,179	4,575
Nov.	18,229	7,305	3,933
Dec.	16,850	6,719	3,600

- 44% of total contacts are abuse screening reports
  - Remaining are requests for information
- 55% of screening reports are assigned for a CPS assessment
- 24% of all contacts ORCAH receives result in a CPS assessment

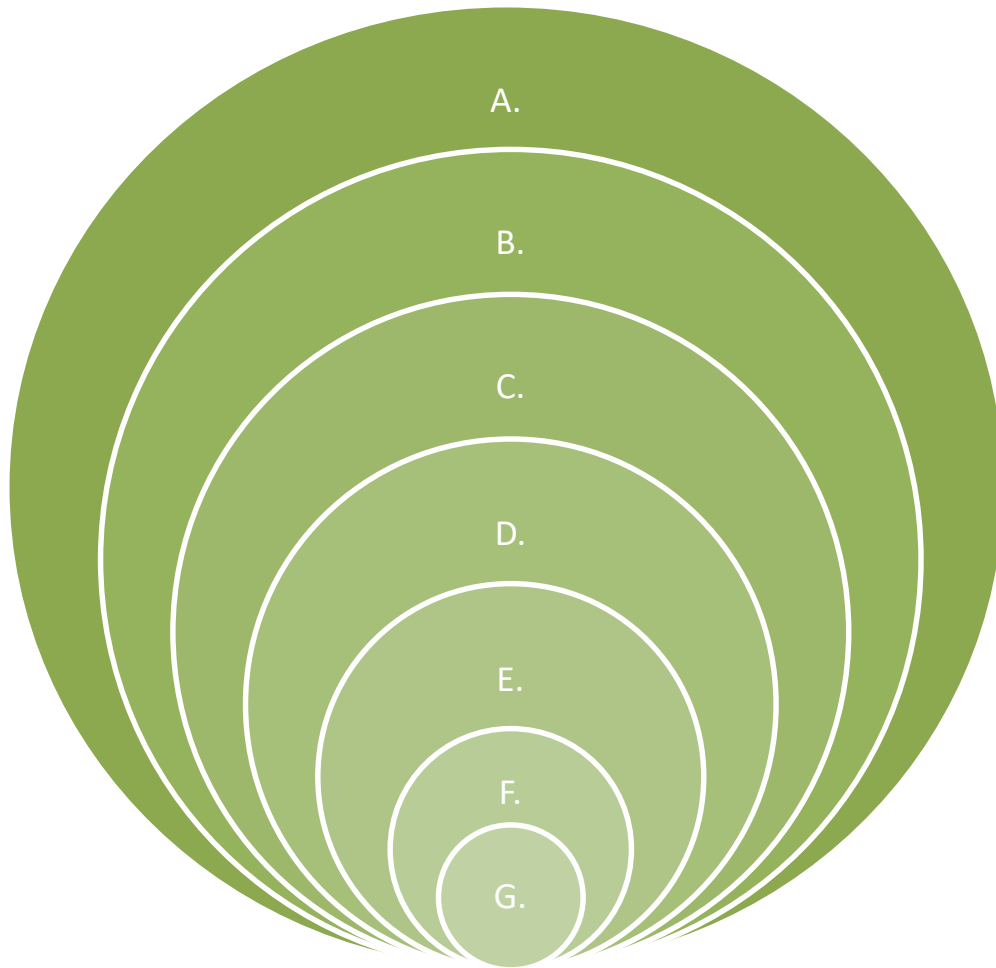
# Transforming the Oregon Child Welfare System

- Transformation is bigger than the Family First Prevention Services Act (FFPSA)
  - Bigger than the Child Welfare Program
- Create capacity in all systems to support the needs of families and children
  - Beds are not services
  - Services need to meet child's needs

# Vision – Strategy – Effort - Outcomes

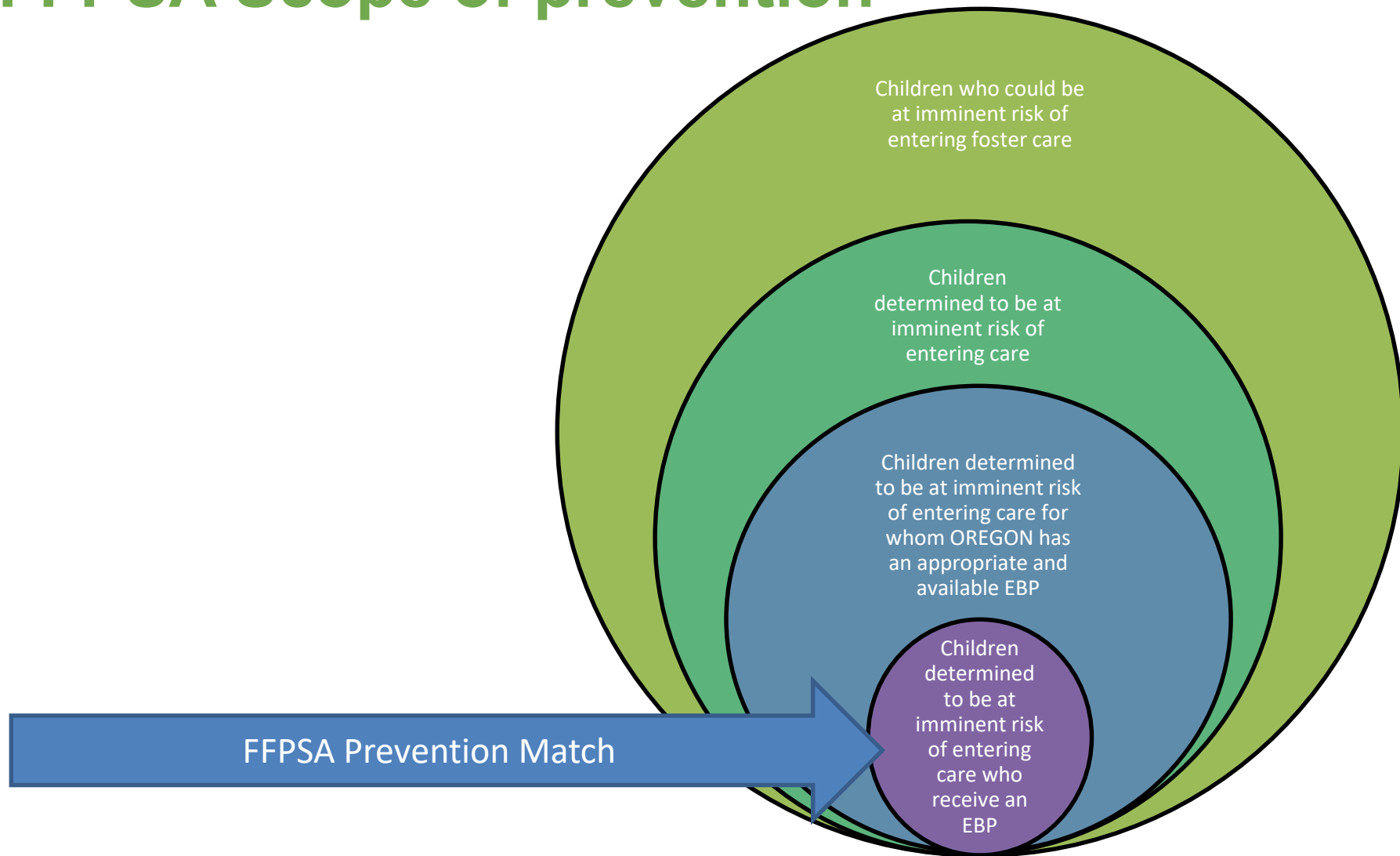
- Decrease entries, increase exits, decrease reentries
- Increase safety and stability
- Increase timeliness to permanency
- Serve families outside of foster care
- Foster parents act as partners with agency and with families of origin

# Child Welfare System



- A. Communities
- B. Families and children in need of supports but NO maltreatment
- C. Families and children with high risk factors (SSP, Employment, Housing)
- D. Families and children with a Hotline Call that was screened out
- E. Families and children with a hotline called screened in and Not Founded
- F. Families and children with a hotline called screened in and Unfounded
- G. Families and children with a hotline called screened in and Founded

# FFPSA Scope of prevention





# Vision and Next Steps

- Lessons Learned
- Transition into FFPSA
- Technical Assistance
- System and Practice Improvements
- Building Prevention into all CW efforts
- Strengthening Partnerships
- Building Workforce