
Oregon Health Authority Behavioral Health Overview

Presented to
Joint Committee on Ways and Means, Subcommittee on Human
Services
February 17, 2020

Patrick Allen, Oregon Health Authority Director
Steve Allen, Behavioral Health Director, Oregon Health Authority



The Triple Aim Vision for Oregon

- 1 Better health**
- 2 Better care**
- 3 Lower costs**

What do we mean when we say Behavioral Health



OHA



DHS

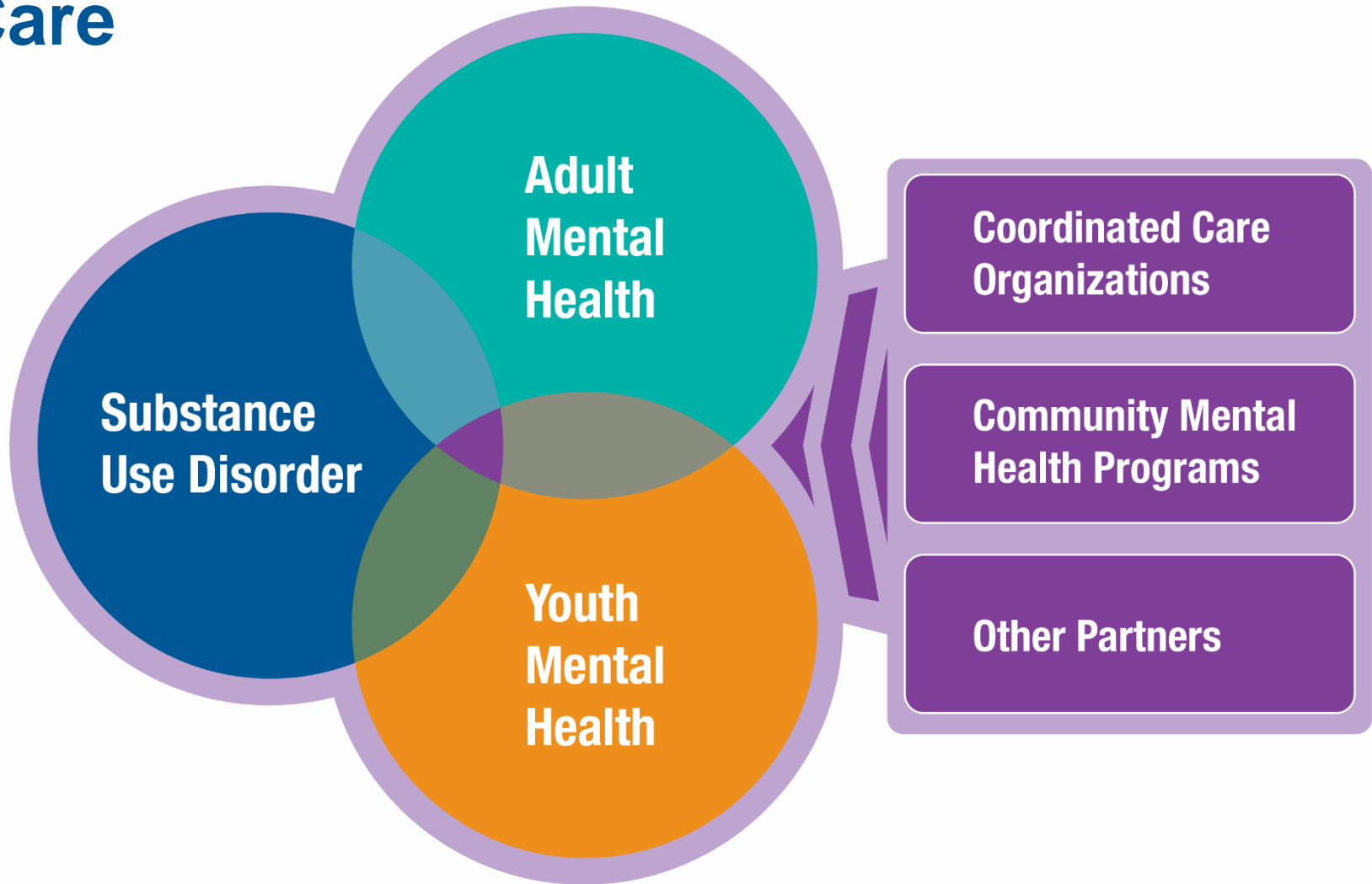


Schools

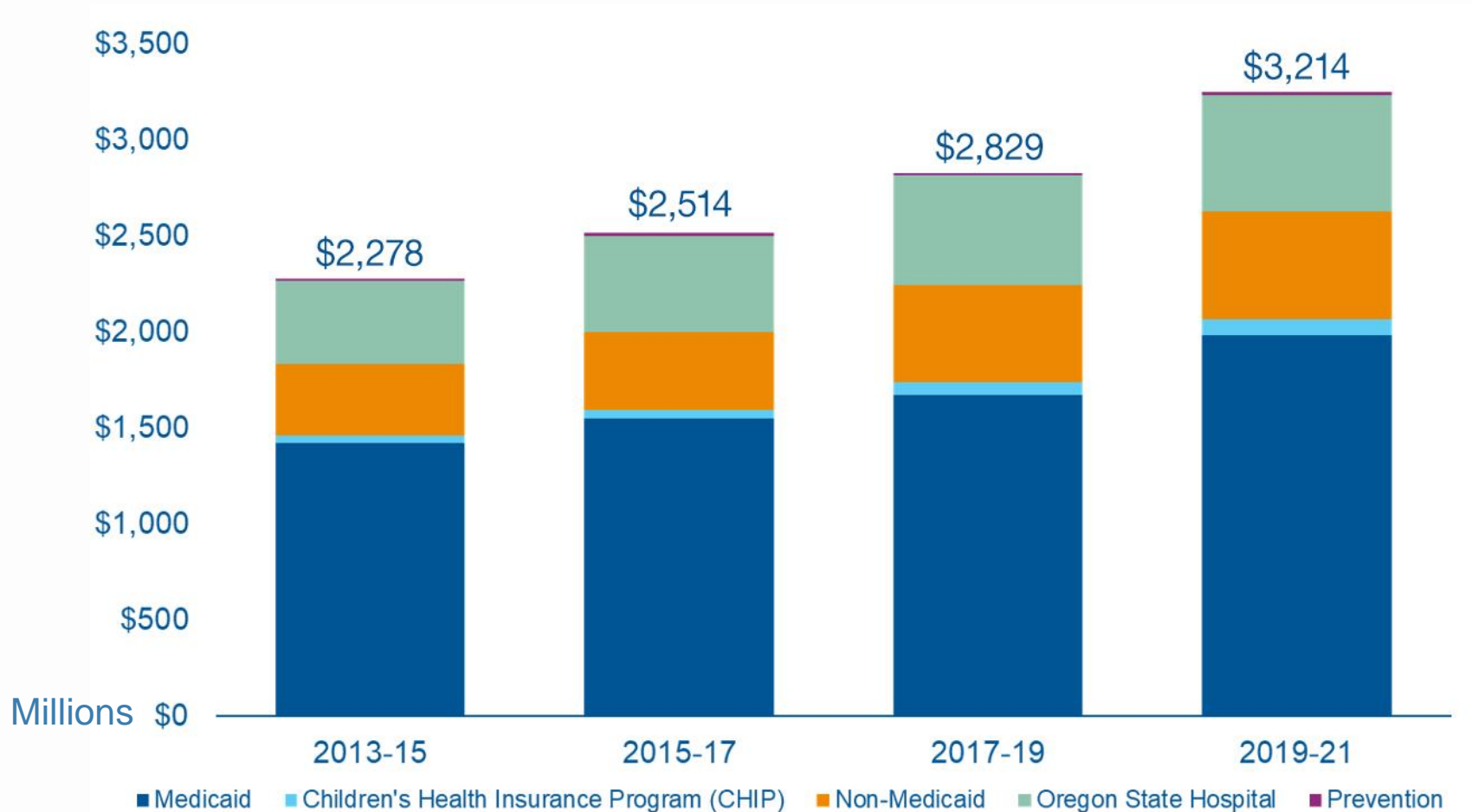


**Criminal
Justice**

How HSD Behavioral Services Delivers Care

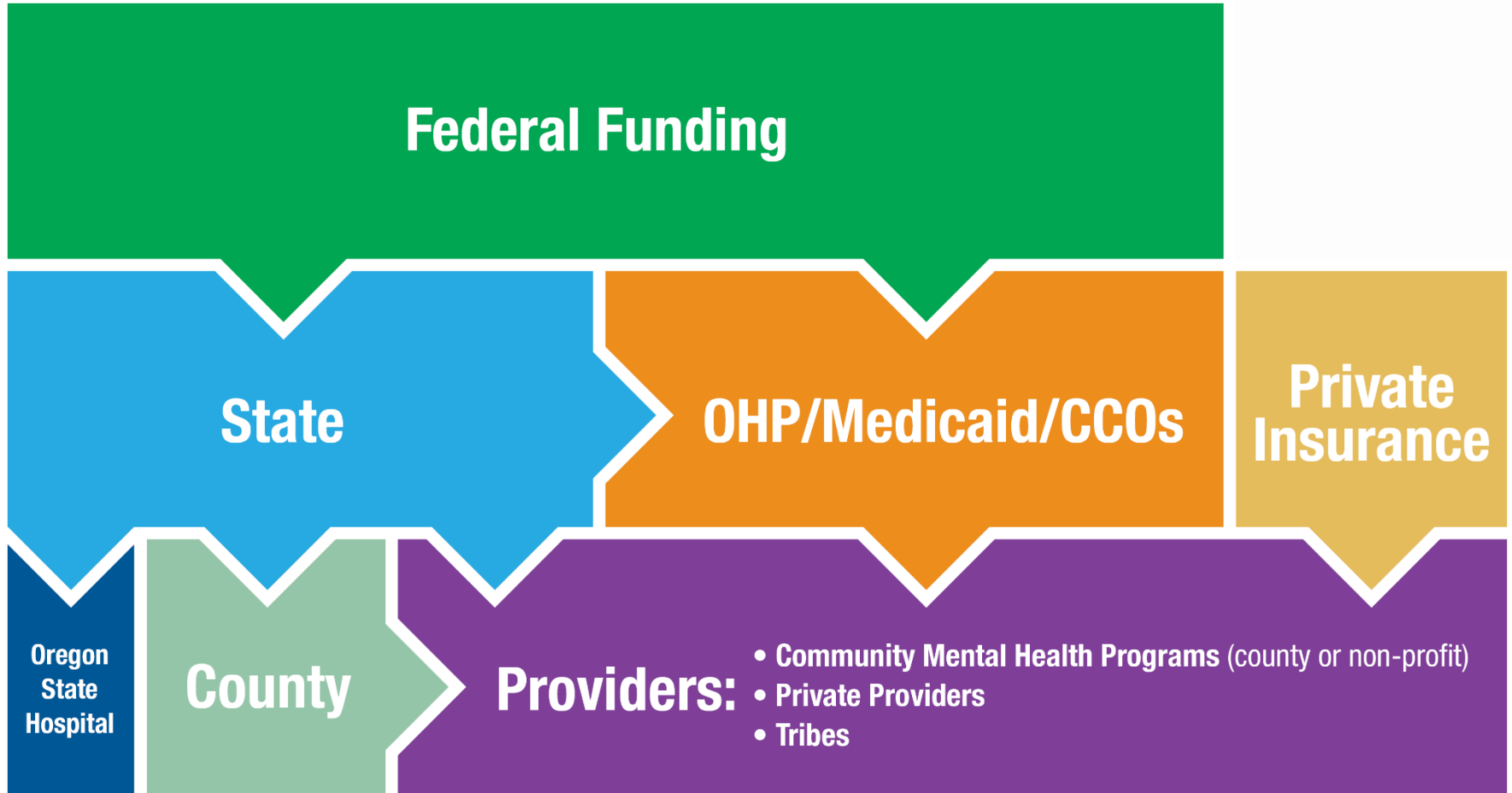


OHA Behavioral Health Spending



OREGON HEALTH AUTHORITY
Behavioral Health

Behavioral Health Funding Streams



Coordinated Care Organizations

CCO 1.0

- Delegated full benefit
- Limited provider network and long wait times
- Members unable to access BH in PCPCH
- Limited care coordination and members “falling through the cracks”

CCO 2.0

- Responsible for BH benefit
- Must ensure adequate provider network and timely access to care (per OAR)
- Must contract for and reimburse BH in primary care
- Priority populations eligible for intensive care coordination

Community Mental Health Programs

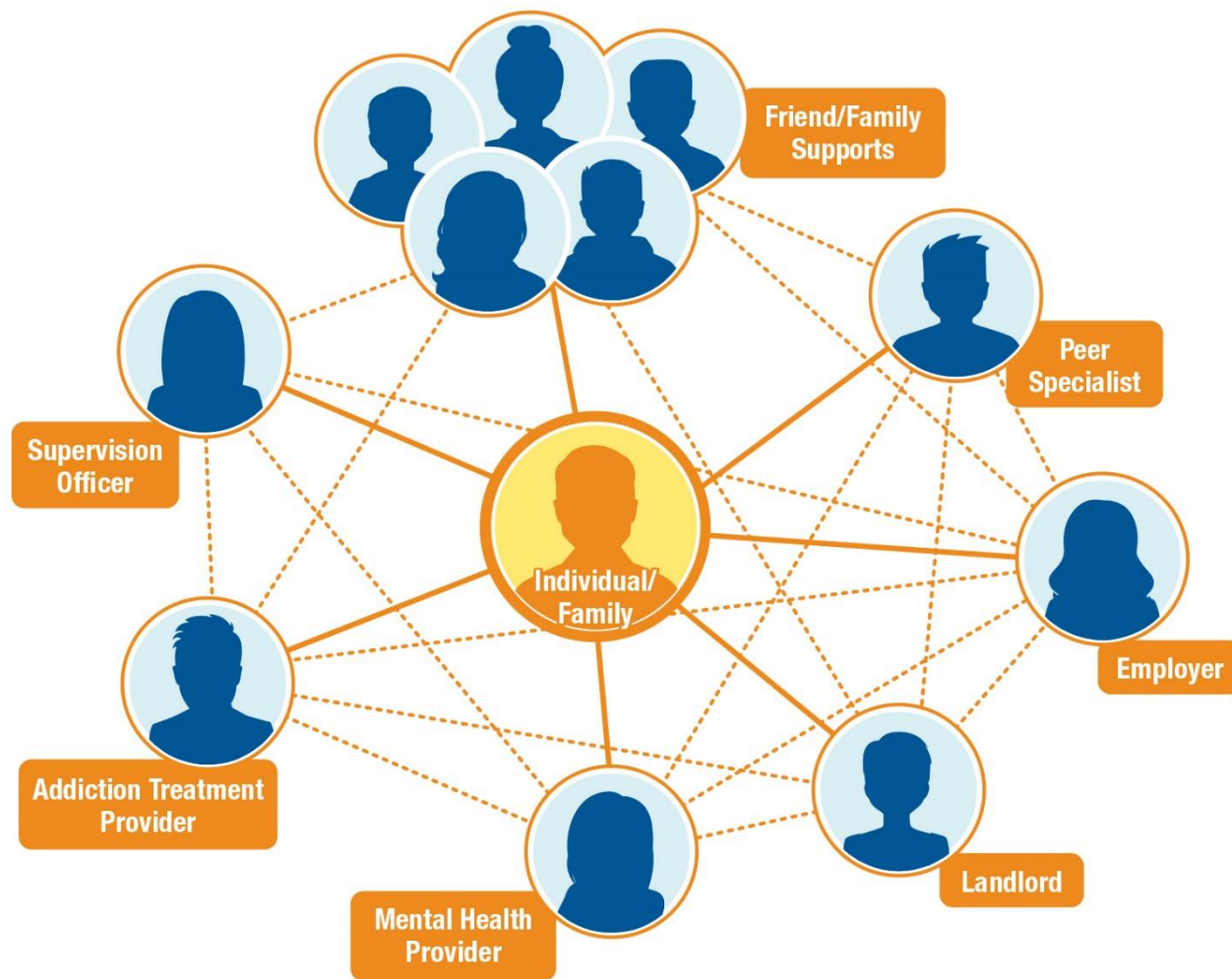
By statute (ORS 430.630), CMHPs provide basic services to persons with mental illness or substance use disorder, subject to:

- Availability of funds;
- Rules established by OHA; and
- Service Elements in OHA-county contracts.

OHA contracts with 35 entities:

- 28 county Local Mental Health Authorities
- 1 tribal Local Mental Health Authority
- 5 private Non-Profit CMHPs
- 1 IGA Non-County CMHP

Behavioral Health System



BH Immediate Challenges

Access to Care

Mental Health Parity

Aid and Assist

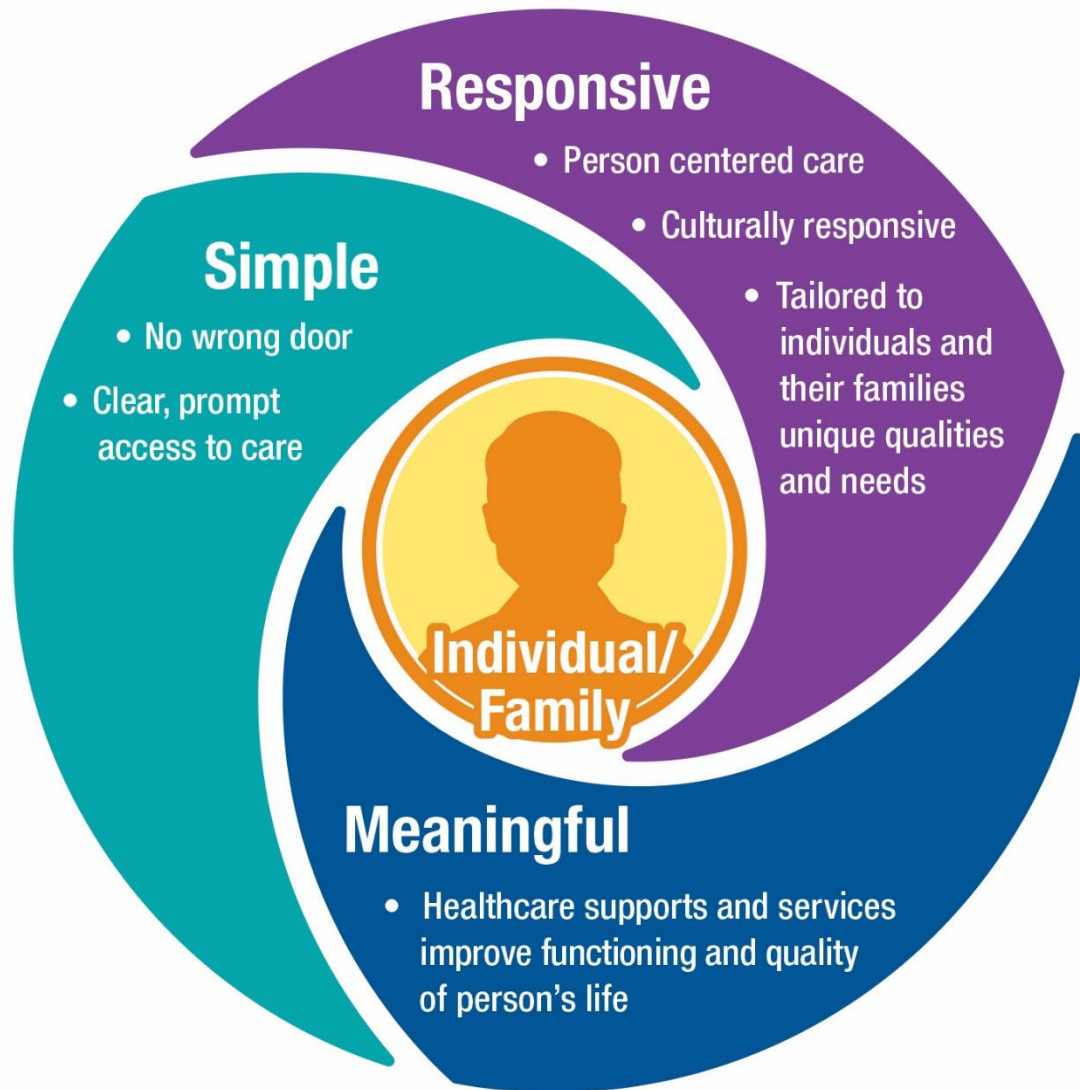
Homelessness

**Children's residential
placements and out of
state child welfare youth**

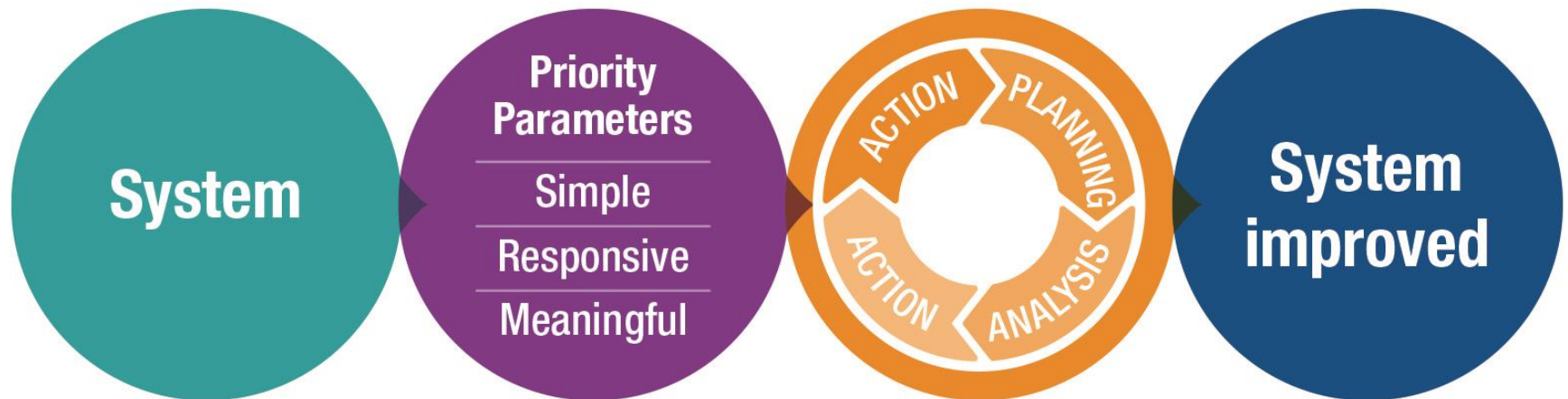
Integration

Vision: Oregon's behavioral health system

Priority Parameter	Definition
Simple to access	Facilitating straightforward, immediate access to needed and effective healthcare services
Responsive	Continually adjusting services and strategies to fully meet the individually specific healthcare needs of each Oregonian
Meaningful	Demonstrating improvements in people's lives



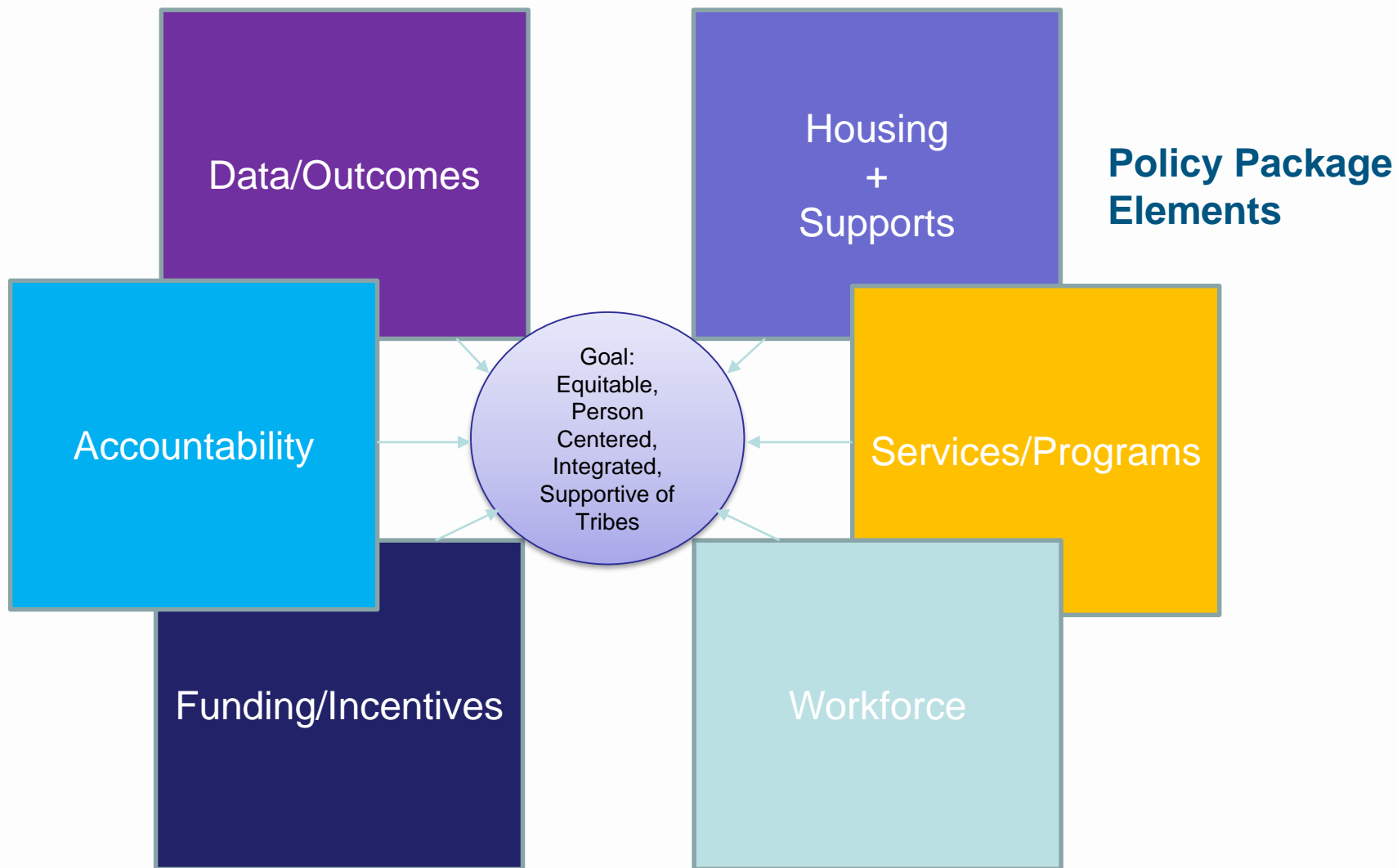
Behavioral Health System Improvement Engine



Behavioral Health Workforce

Recommendations to address workforce consistently identified needs in the following areas:

- Workforce Training and Competency
- Workforce Composition
- Capacity Assessment and Expansion
- Telehealth



Behavioral System Capacity Pressures

- Oregon State Hospital
- Mental Health Residential
- Community Services

Vision for a Better Behavioral Health system for Oregon

A meaningful, dignified life is attainable for all people of Oregon who struggle with mental illness or substance use disorder, regardless of who they are, who they love and where they're from.

Thank You

