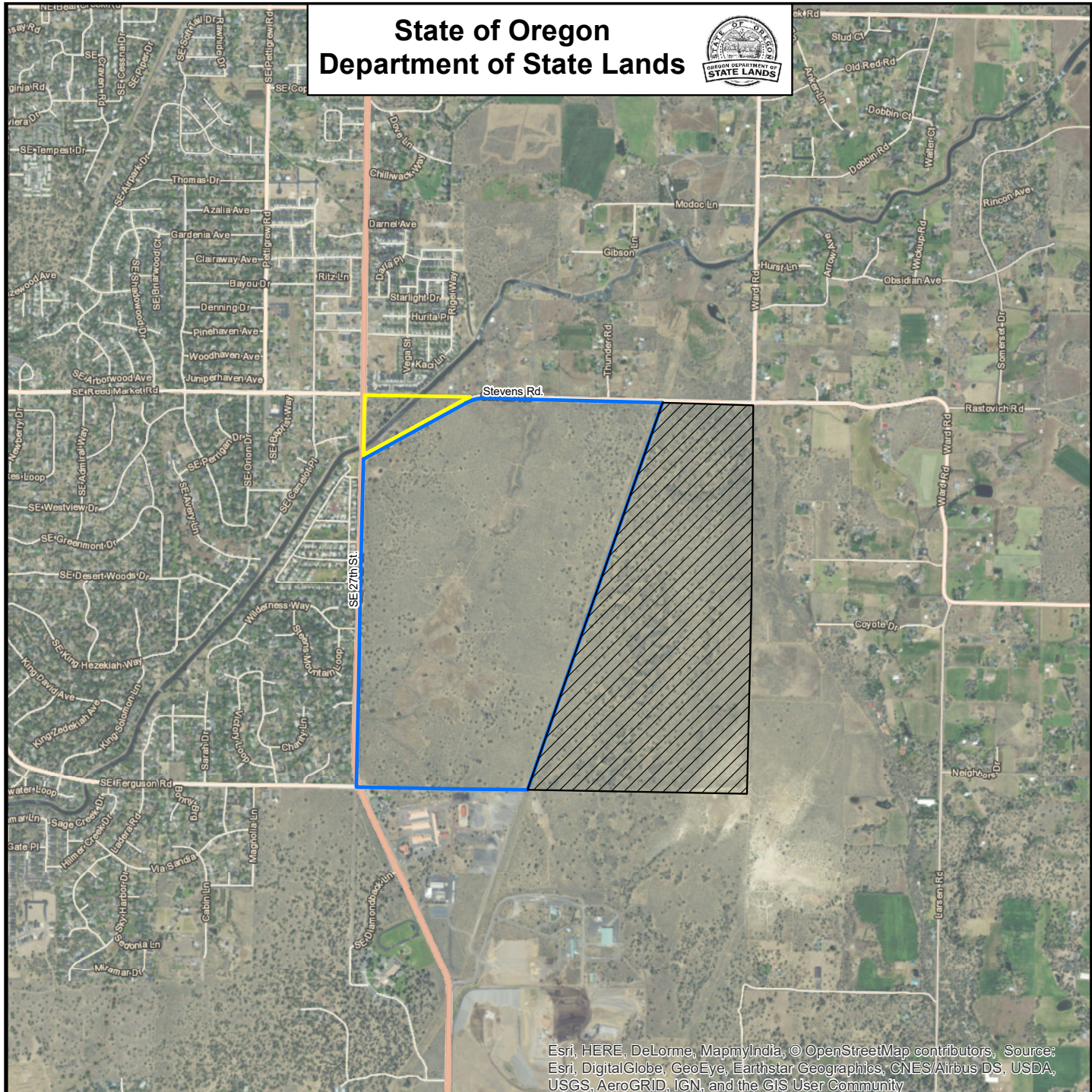



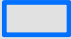

State of Oregon Department of State Lands



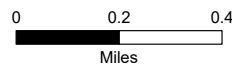
Esri, HERE, DeLorme, MapmyIndia, © OpenStreetMap contributors, Source: Esri, DigitalGlobe, GeoEye, Earthstar Geographics, CNES Airbus DS, USDA, USGS, AeroGRID, IGN, and the GIS User Community

APPENDIX A

Stevens Road Tract
T18S, R12E, Section 11
Tax Lot 2300
Deschutes County

-  60 Acres: Within UGB
-  320 Acres: 2016 UGB Expansion
-  260 Acres: 2017 Rezone Application

This product is for informational purposes only and has not been prepared for, nor is suitable for legal, engineering, or surveying purposes. Users of this information should review or consult the primary data and information sources to ascertain the usability of the information.



Map Projection:
 Oregon Statewide Lambert
 Datum NAD83
 International Feet
 State of Oregon
 Department of State Lands
 775 Summer St NE, Suite 100
 Salem, OR 97301
 503-986-5200
www.oregon.gov/DSL
 Date: 9/26/2017

