



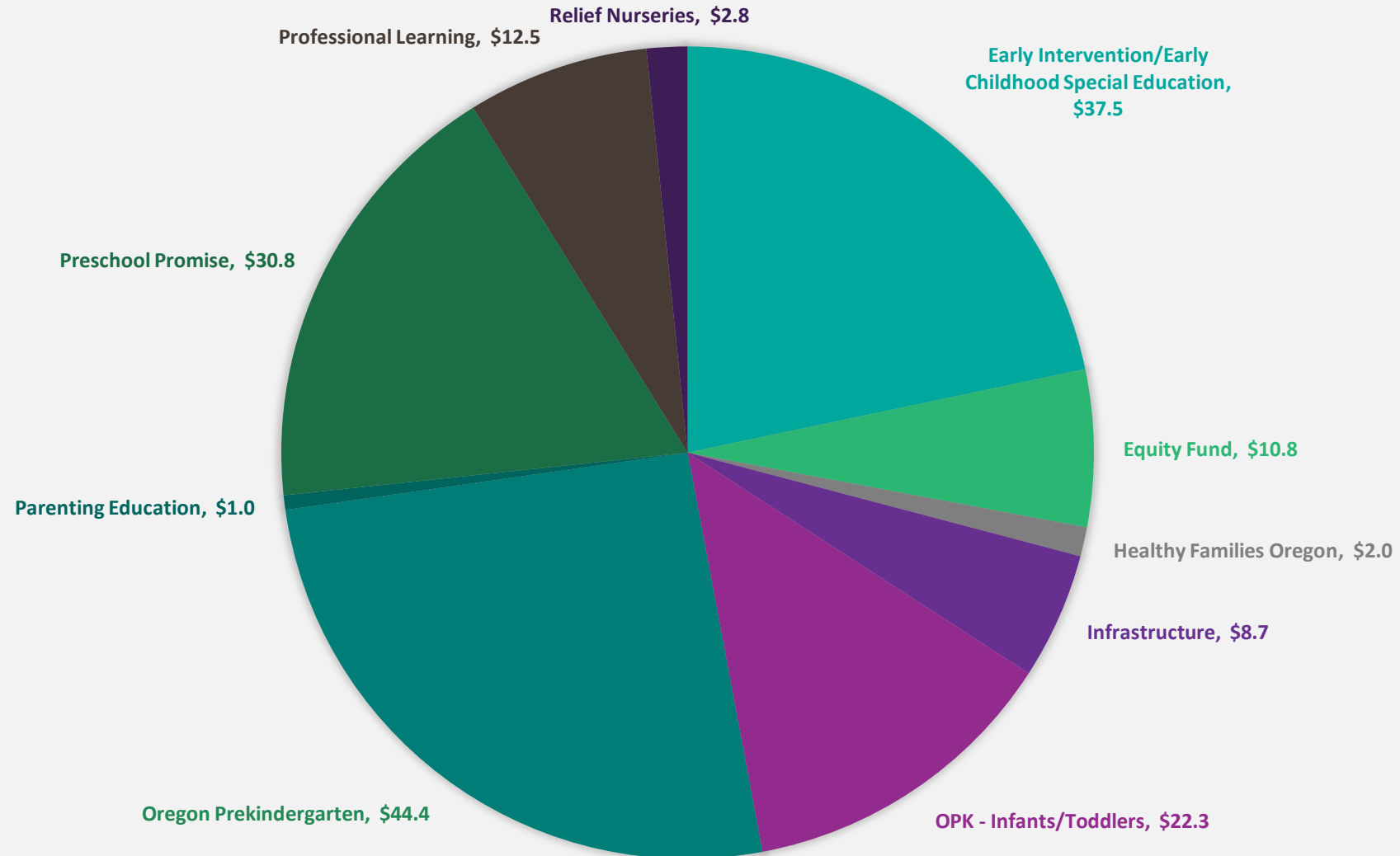
Student Success Act Implementation: Early Learning Account

Presentation to the Joint Ways and Means Subcommittee on Education

The EARLY LEARNING ACCOUNT of the



STUDENT SUCCESS ACT



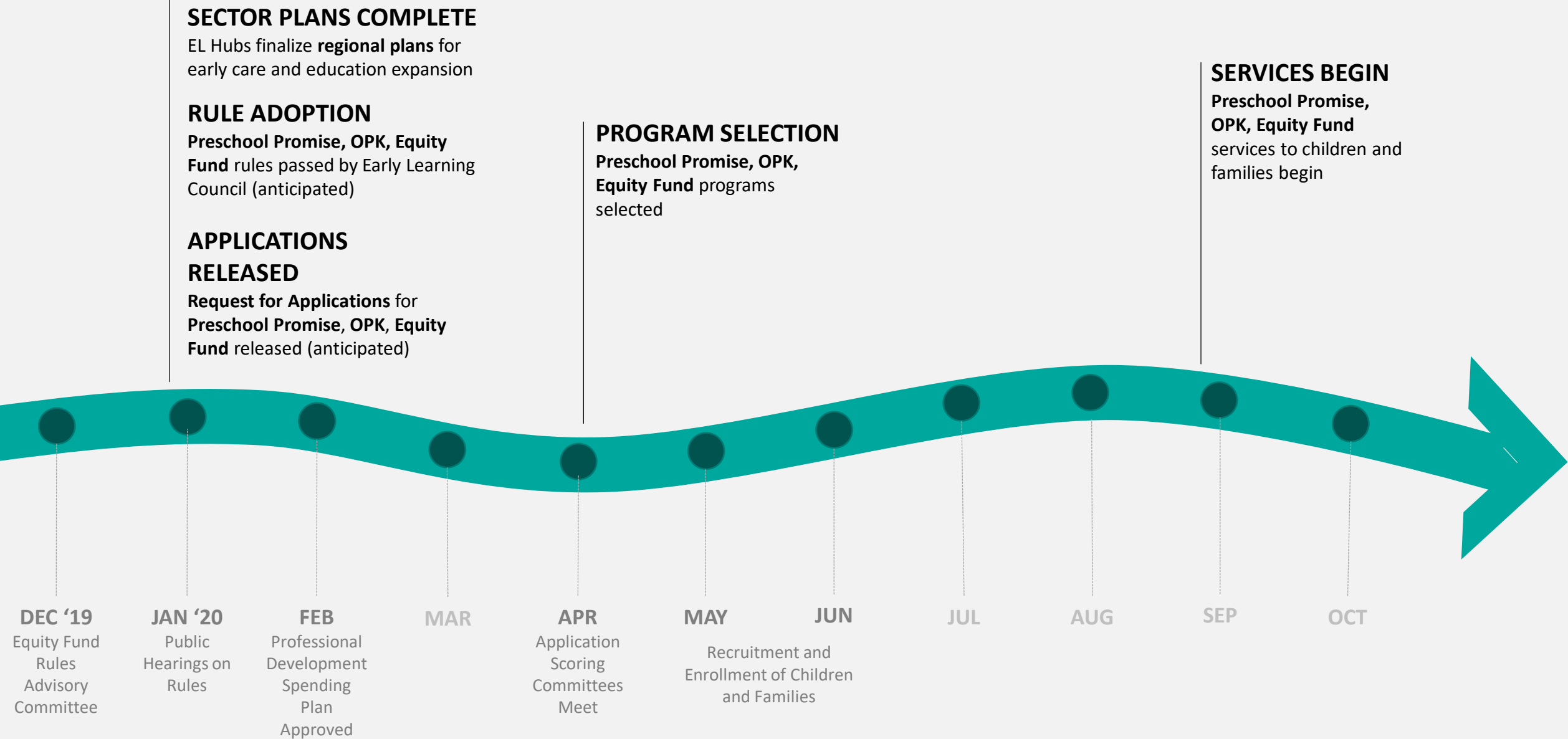
Student Success Act Annual Numbers

Program (ages) or Investment	Purpose	Investment (m)	Addt'l Slots	Mechanism for Funding
PROGRAMS		\$151.6		
Oregon Prekindergarten (OPK): Early Head Start (PN-3)	<ul style="list-style-type: none"> Provide high-quality infant/toddler education to children in poverty (< \$26K/year for a family of 4) 	\$22.3	1,189	Request for Applications (RFA)
OPK: Head Start (3-5)	<ul style="list-style-type: none"> Expand existing OPK slots to be full-day, include teacher salaries, and duration Provide high-quality pre-kindergarten to children in poverty & comprehensive health, nutrition, and other supports to children and families in poverty 	\$44.4	Enhances all slots	RFA
Preschool Promise (3-5)	<ul style="list-style-type: none"> Provide high-quality pre-kindergarten to children in low-income families 	\$30.8	2,565	RFA
Healthy Families Oregon (PN-3)	<ul style="list-style-type: none"> Prevent children from entering the child welfare system through supports to their parents/families 	\$2.0	500	RFA
Parenting Education (PN-5)	<ul style="list-style-type: none"> Provide supports to parents through Oregon Parenting Education Collaborative / Parenting Hubs 	\$1.0	TBD	Intergovernmental Agreement*
Equity Fund (PN-5)	<ul style="list-style-type: none"> Support culturally-specific programming for children and families from historically underserved populations to increase kindergarten-readiness and family engagement 	\$10.8	2,500	RFA
Relief Nurseries (0-6)	<ul style="list-style-type: none"> Support children and families in or at-risk of entering the child welfare system through therapeutic early childhood programming & family support. 	\$2.8	TBD	In partnership w/ OARN
Early Intervention/Early Childhood Special Education (0-5)	<ul style="list-style-type: none"> Provide special education services to children with developmental delays and disabilities 	\$37.5	0	-

Student Success Act Annual Numbers

Investment	Purpose	Investment (m)
INFRASTRUCTURE		\$21.2
Facilities Improvements	<ul style="list-style-type: none"> Ensure facilities meet licensing and other program standards 	\$0.8
Classroom-level Coaching	<ul style="list-style-type: none"> Provide coaching to improve instruction in Preschool Promise 	\$1.9
Quality Monitoring Systems	<ul style="list-style-type: none"> Monitor the quality of PSP and OPK classrooms 	\$0.6
Professional Learning	<ul style="list-style-type: none"> Ensure all early childhood educators have access to a high-quality professional learning that includes training, technical assistance, and access to post secondary education. 	\$12.5
Early Learning Hubs - Community Plans	<ul style="list-style-type: none"> Support Early Learning Hubs to create master plans that target ECE services to children and families who need them most 	\$1.0
Early Learning Hubs – Coordinated Enrollment	<ul style="list-style-type: none"> Support Early Learning Hubs to coordinate outreach and enrollment of families to early learning services within their region 	\$2.5
Early Learning Division Staffing Capacity	<ul style="list-style-type: none"> Support the Early Learning Division to monitor and support high-quality programs 	\$1.9

SSA IMPLEMENTATION TIMELINE

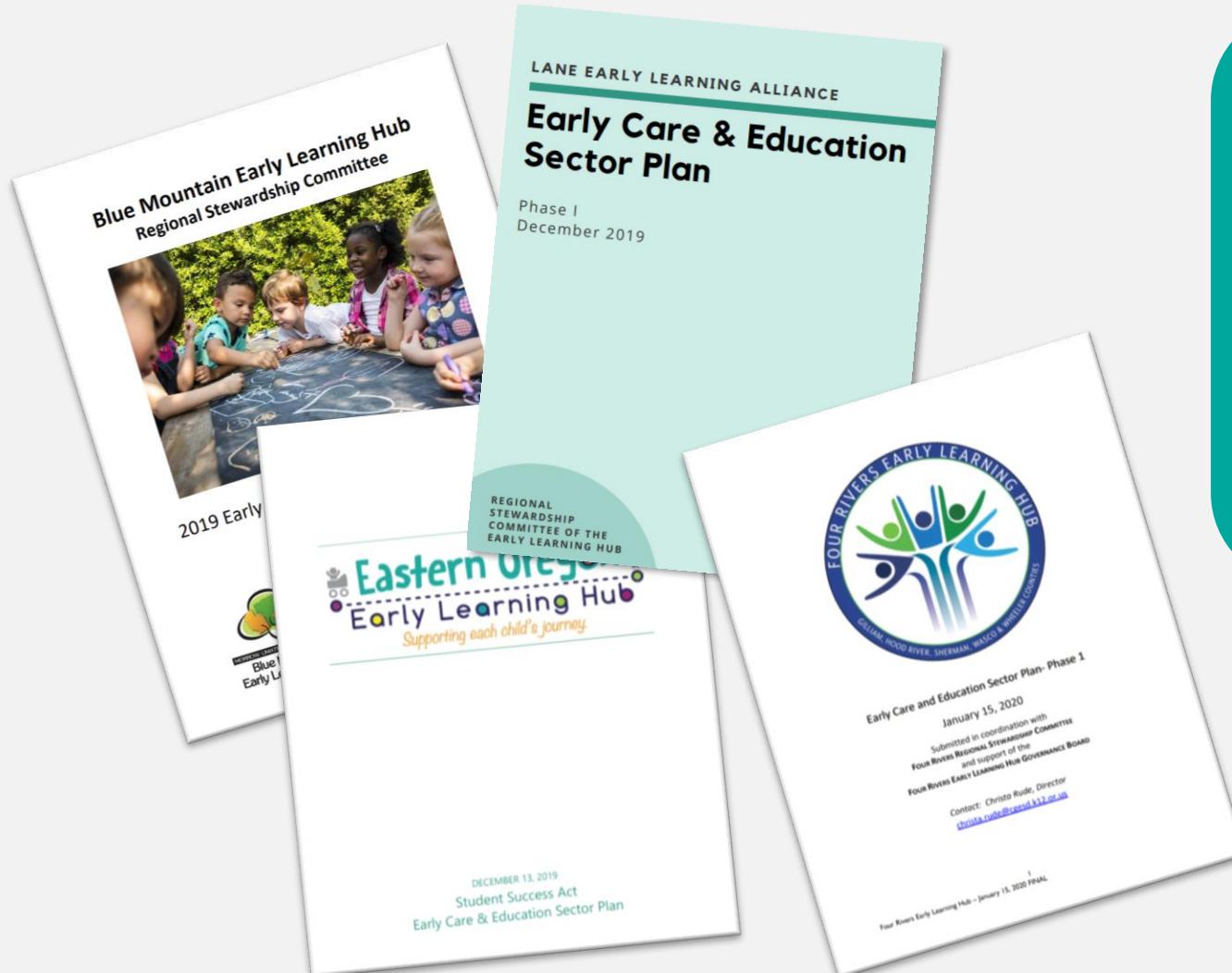


PROGRESS – BUILDING INTERNAL CAPACITY

Position	Hiring Status
Director of Early Learning Programs	Filled
Equity Fund Grants Specialist	Filled
Program Grant Specialist	Filled
Program Grant Specialist	Filled
Performance & Quality Specialist	Job Offer
Equity Fund Program Manager	Interview
Research Assistant	Feb 2020
Preschool Program Specialist	July 2020
Preschool Program Specialist	July 2020
Program Team Support	July 2020
Community Systems Director	July 2020



EL HUBS: EARLY CARE AND EDUCATION SECTOR PLANS



“High program cost and transportation to and from preschool to daycare are my primary barriers to accessing care. I almost couldn't do preschool with my youngest because of transportation issues due to my work schedule.” – Parent, EL Hub

“Parents want to have caregivers speak their native language. There's a call for cultural sensitivity and cultural diversity.” – SOEL Hub Plan

PRESCHOOL PROMISE

High-quality preschool program delivered through a variety of providers for families at 200% of the Federal Poverty Level or below.



2,500

ADDITIONAL CHILDREN 3-5
SERVED STATEWIDE

\$30M

TO CONVERT OR CREATE
HIGH-QUALITY SLOTS

\$3M

FOR COACHING, TECHNICAL
ASSISTANCE, MONITORING,
AND EVALUATION

PRESCHOOL PROMISE

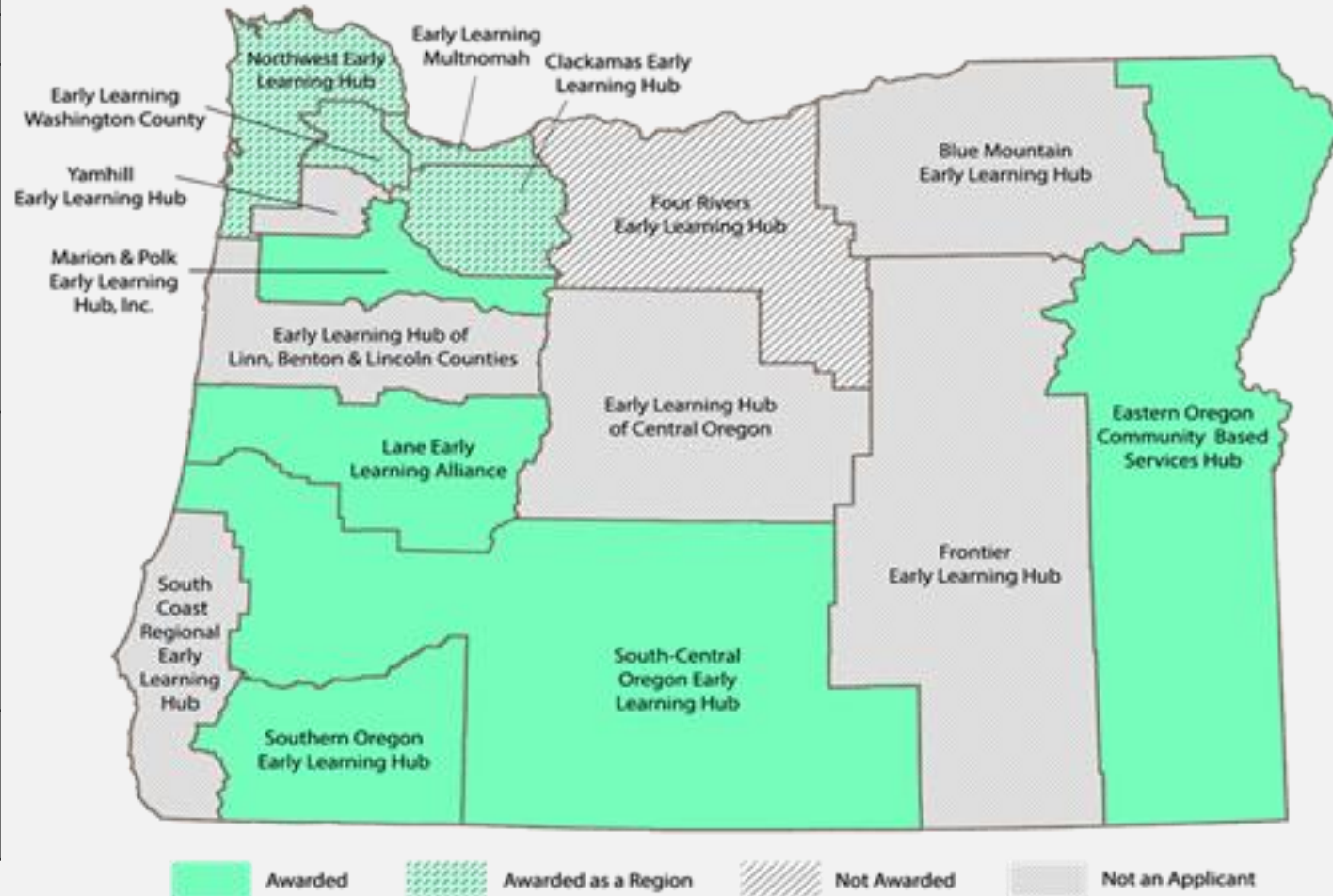
- Slot Distribution Plan
- Engagement on Standards with current providers
- Request for Applications for providers and fiscal agents ready for release
- Support for Applicants available from CCR&Rs



SLOT DISTRIBUTION

In order to create equitable distribution of current slots, ELD has created ranges of slots by EL Hub Region based on existing Preschool Promise slots and the number of eligible children by county.

Hub	Anticipated Range
Early Learning Multnomah	Between 300-400
Central Oregon Hub	Between 150-250
EL Hub of Linn Benton Lincoln	
EL Washington County	
Clackamas EL Hub	
Early Learning Hub, Inc.	
Tribal Nations*	
Blue Mountain EL Hub	
Lane Early Learning Alliance	Between 75-150
Southern Oregon EL Hub	
South-Central Oregon EL Hub	
Four Rivers EL Hub	
South Coast Regional EL Hub	
Yamhill EL Hub	
Northwest EL Hub	Less than 75
Eastern Oregon Community	
Frontier EL Hub	





PRESCHOOL
P R O M I S E

SUPPORTS FOR PROVIDERS

CCR&R

- TA on Quality Standards & Spark
 - Quality Standards
 - Program Operation
 - Develop CQI plans
- Instructional Coach
 - Focus on quality instruction
- Facilitate Professional Learning Community
 - Develop PD plans
 - Support inclusionary practices and environments
- Instructional Leadership
- Additional duties may apply

Early Learning Hubs

- Coordinated Enrollment
- Preschool Promise Duties Include:
 - Responsible for the coordination of recruitment, eligibility, selection, and placement of children and families.
 - Manages recruitment plans and activities, enrollment systems and waitlists
 - Collaborates with PSP providers and other programs regarding enrollment and recruitment.
 - Connects families and providers to community resources
- Additional duties may apply

Early Learning Division

- Onboarding technical assistance
- Program monitoring and oversight
- Grant management and technical assistance
- Data collection and reporting
- Provide statewide training and technical assistance

EARLY CHILDHOOD EQUITY FUND

Support for **culturally-specific programs and organizations** and federally-recognized **tribes** to serve families and children in parenting education, parent-child interaction, kindergarten readiness, and language preservation programs.



2,500

FAMILIES AND CHILDREN B-5
TO BE SERVED STATEWIDE

\$10M

TO PILOT OR EXPAND
SERVICES

\$800K

FOR TECHNICAL ASSISTANCE,
OTHER SUPPORTS, &
EVALUATION

EARLY CHILDHOOD EQUITY FUND

- Initial Survey completed
- Rules Advisory Committee
- Request for Applications ready for release
- Support for Applicants



OREGON PRE-KINDERGARTEN, PN-5

High-quality education and comprehensive services program delivered through Head Start Grantees to pregnant people and children 0-5 and their families at the Federal Poverty Level or below.



8,100

SLOTS ENHANCED
FOR 3-5

1,280

NEW SLOTS
FOR PN-3

\$44.4M

FULL-DAY, SALARIES,
TRANSPORTATION
FOR OPK

\$22.3M

EARLY HEAD START/
OPK PN-3

OREGON PRE-KINDERGARTEN, PN-5

- Engagement on salary and transportation investments
- Engagement on Early Head Start models
- Request for Applications ready for release



PROFESSIONAL LEARNING PLAN

Critical investments across the entire early care and education workforce in child care centers, homes, Head Start, and public schools to support degree and credential attainment, ongoing professional learning, and recruitment into the field.



25,000

The infographic consists of two dark blue circles. The left circle is larger and contains the number '25,000'. The right circle is smaller and contains the text '\$12.5M'. Below each circle is a label in all caps.

MEMBERS OF THE EL
WORKFORCE

\$12.5M

TO INVEST IN WORKFORCE
SUPPORTS

PROFESSIONAL LEARNING PLAN

- Engagement with educators and other stakeholders across the state
- Review of other state systems and literature on best practice
- Submitted spending plan 1-15-20 for approval during February session



Professional Learning Plan

- Submitted plan for SSA \$12.5 investment on 1/15/20
- Seeking approval from Joint Ways and Means Education Subcommittee in February 2020
- Highlights:
 - Creating competencies for early childhood educators
 - Filling key gaps in the current system
 - Exploring approaches to advising for early childhood educators
 - Adapting pathways across the education continuum
 - Supporting educators through scholarships and supports for colleges to ensure programs meet the needs of the current ECE workforce
 - Building on innovations statewide
 - Expanding consortia approach
 - Developing more job-embedded professional learning opportunities

SSA IMPLEMENTATION TIMELINE: NEXT STEPS

