

Memorandum

March 1, 2019

To: Oregon Legislators

Fr: Dan Golden, Director, Klamath County Juvenile Department

Re: Considerations: Klamath YIP Construction Project

The Klamath YIP construction project: Klamath County's project to replace Oregon's oldest juvenile detention building with a residential treatment facility for female teenage clients from the Oregon Youth Authority (OYA) and Department of Human Services (DHS).

Fiscal status: The Oregon Legislature appropriated \$1 million in lottery funds in 2017. Governor Kate Brown recommended an additional \$12 million in lottery funds for 2019-21. Klamath County committed a \$1 million match. Based on architectural estimates of \$17 million, Klamath County is requesting \$15 million in lottery funds from the Legislature for 2019-21.

What is Klamath YIP?

The Klamath Youth Inspiration Program, or Klamath YIP, is an intensive residential treatment program for teenage girls from OYA and DHS. Klamath YIP is a county program, but all beds are under contract to OYA and DHS. These teenage girls are literally Oregon's children.

Klamath YIP specializes in gender-responsive behavioral health care and substance abuse treatment. Klamath YIP is currently located in a living unit in the Klamath County juvenile facility. Program clients occupy all nine bedrooms in the unit. The proposed project will build a 24 bed residential facility with improved educational and vocational opportunities for clients.

How does Klamath YIP benefit the State of Oregon?

OYA girls violating probation or parole requirements are committed to OYA's Youth Correctional Facility, Oak Creek YCF. Oak Creek is at capacity with more than 60 girls.

By design, Klamath YIP diverts girls away from correctional placement into community settings like foster care, shelter programs, independent living, and client's own family homes.

In September, 2016, Klamath YIP began admitting female clients from DHS. The proposed facility will provide services to additional DHS clients with the goal of preparing them for successful community placement instead of involvement in the juvenile justice system.

How does Klamath YIP save Oregon money?

In diverting girls from YCF beds, Klamath YIP helps OYA with correctional capacity for girls. OYA corrections placement costs \$321 per day per client. OYA pays Klamath County YIP \$248 per day per client, but \$112 is reimbursed to OYA from Federal Medicaid funds.

Klamath YIP is a Klamath County program. By contracting with Klamath County, OYA is passing potential costs for personnel management, program security, and liability to Klamath County. This partnership with Klamath County is saving the State of Oregon substantial costs.

Why create more residential treatment beds for girls?

The percentage of girls in Oregon's juvenile justice system has risen to nearly 40% of new case referrals to county juvenile departments. Effective management of a growing female

population is an OYA and county priority. OYA needs to divert girls from costly correctional confinement to manage female clients more effectively in community settings. Yet, many prominent non-profit residential programs for girls have closed.

The DHS foster care system needs supportive stabilization services to assist foster providers in keeping teens from getting involved in the juvenile justice system. Governor Kate Brown's Child Welfare Policy Agenda (Sept. 2018) recognized a need for regional assessment programs to eliminate placement in detention settings. The proposed facility will provide trauma-informed behavioral and educational services for DHS clients, preparing them for successful placement.

How effective is Klamath YIP?

In its first two years, Klamath YIP successfully stabilized **82%** of the OYA girls placed in the program. Klamath YIP continues to divert **80%** of clients away from YCF placement.

Does residential treatment save money?

With only nine beds, Klamath YIP currently stabilizes approximately **50** clients a year. If held in a correctional facility, those **50** clients would cost OYA **\$321** per day per client, or **\$5,858,250** per year. Community-based programs like Klamath YIP cost OYA **\$136** per day per client. At **\$136** per day, those **50** clients cost the state **\$2,482,000** per year. Potentially, correctional placement of those **50** clients would cost the State of Oregon **\$3,376,250** more per year than community placement in treatment programs like Klamath YIP.

Why is Klamath YIP effective?

Klamath YIP was designed to provide intensive gender-responsive treatment to female clients in a safe, gender-specific residential setting. Many residential programs were developed for male delinquents. Female clients have specific needs. All staff in Klamath YIP are women. All assigned mental health providers are also female. Klamath YIP uses evidence-based materials designed to enhance trauma-informed care. YIP is a program specifically designed for the rehabilitation of teenage girls.

What construction is proposed?

Klamath County proposes to demolish an obsolete wing of the county juvenile detention building and replace it with a new residential facility designed to enhance behavioral health, independent living, and educational programs of Klamath YIP. The new construction proposes to enlarge the program capacity from nine to an estimated **24** beds.

Why the construction would enhance success.

Currently, Klamath YIP is housed in a converted detention unit that lacks space for individual counseling, vocational, and educational programs. The unit is small, limiting the number of clients. The planned facility will make it possible to open additional treatment and educational opportunities and conduct multiple services simultaneously with a greater number of clients.

The proposed construction costs \$17,000,000: how were costs estimated?

In 2017, ORW, an Oregon architectural firm conducted a thorough review of the project. ORW estimated total project cost at **\$17,000,000**. This includes demolition, architectural work, and new construction through final finish.

Is there a need for more program capacity? Klamath YIP currently receives nearly three client referrals for every bed available. In 2018, Klamath YIP received 144 referrals (94 OYA, 50 DHS) but could only accept 50 clients from both agencies combined.

Why is this a good investment?

Given that nearly **40%** of juvenile caseloads now involve female offenders, Oregon must create effective treatment opportunities to divert female DHS and OYA clients out of the juvenile justice and correctional systems. Otherwise, costs of youth and adult correctional systems for women will escalate. Expanding Klamath YIP will divert hundreds of young women out of future corrections commitments imposing far greater costs on Oregon.

Why locate a program in Klamath Falls?

Klamath County has a unique network of services supporting Klamath YIP's model of care.

- Klamath YIP networks with the county mental health provider - Klamath Basin Behavioral Health (KBBH), an agency with more than 20 years of experience in youth care. KBBH Qualified Mental Health Professionals (QMHP's) conduct client care.
- A Family Nurse Practitioner and RN provides medication management.
- Educational requirements are addressed by the Klamath Falls City School District.
- The Oregon Institute of Technology in Klamath Falls hosts an Applied Psychology undergraduate program and Master's program in Family Therapy. Students work closely with Klamath YIP; several now recruited to paying staff positions.
- The residency program at Oregon Health Sciences University (OHSU) facility in Klamath Falls provides medical services and counseling to YIP clients.
- The Klamath County Public Health Department conducts health education with clients.

In short, a unique network of professionals work together with juvenile department staff to provide female clients with intensive gender-responsive trauma-informed behavioral health, medical, and educational services making Klamath YIP effective.

Klamath Youth Inspiration Program: A blueprint for success?

These young women are literally Oregon's children. When you talk with these clients, you realize they aspire to become contributors to Oregon's future. With our help, they will realize their dreams to become Oregon's greatest resources.

These children are not liabilities. Rather, they aspire to define Oregon's future success.

Klamath County needs the help of the Oregon Legislature to invest in improving these young women's lives. Please support the Klamath YIP construction project to expand effective behavioral treatment and educational opportunities for these worthy young women.

Thank you,
Dan Golden, Director
Klamath County Juvenile Department
541-851-3856 dgolden@co.klamath.or.us



Please return the completed Request Form to:
Amanda Beitel, Principal Legislative (Bonds) Analyst
amanda.beitel@oregonlegislature.gov
(503) 986-1506

SUBMIT FORM

State of Oregon 2019-21 Bond Financing Request

Project Description

The Klamath YIP (Youth Inspiration Program) facility project will tear down the oldest juvenile detention building in Oregon and build a new residential treatment facility for teenage girls who are wards of the Oregon Youth Authority (OYA) and Department of Human Services (DHS). Since 2014, Klamath YIP has provided high risk OYA and DHS clients with gender-responsive residential care emphasizing behavioral health, substance abuse treatment, life-skills, physical health care, and education. Teenage female clients receive intensive evidenced-based trauma-informed behavioral treatment and educational services designed to stabilize client behaviors. The program's goal is to motivate clients to succeed in community placement at home or foster care in their home communities instead of placement in juvenile detention and youth correctional facilities. Klamath YIP is currently limited to nine beds in a setting originally designed for detention. In 2018, OYA and DHS requested three times the number of beds for clients than YIP had available. The proposed construction will build a new 24 bed facility with separate residential spaces for female DHS and OYA clients plus a new education center. The project will generate 200 jobs in Klamath County. In 2017, the Legislature awarded \$1 million in lottery funds. Governor Kate Brown recommended \$12 million in lottery funds for 2019-21. Architectural review estimates a total project cost of \$17 million. With \$1 million in lottery funds already awarded in 2017, Klamath County is requesting \$15 million in lottery funds for 2019-21. Klamath County will provide a \$1 million match from county funds including grants to meet the \$17 million construction cost.

Project Cost

Total project cost: \$ 17,000,000

Bonding amount requested this biennium: \$ 15,000,000

Bonding amount needed for entire project: \$ 16,000,000

Bond type (General Obligation/Lottery): Lottery Bond - Economic Development

Matching funds (Amount/Source): \$ 1,000,000 Klamath County/Grants

Project Contact

Name of entity that will receive funds: Klamath County

Federal Tax ID Number: 93-6002301

Type of entity: Oregon County

Name of contact person: Dan Golden, Director, Klamath County Juvenile Department

Email address of contact person: dgolden@co.klamath.or.us

Phone number of contact person: 541-851-3856



Board of Commissioners

Donnie Boyd, Commissioner
Position One

Kelley Minty Morris, Commissioner
Position Two

Derrick DeGroot, Commissioner
Position Three

February 7, 2019

Senator Betsy Johnson
Senator Elizabeth Steiner Hayward
Representative Dan Rayfield
Co-Chairs, Joint Committee on Ways and Means
900 Court Street, NE - S-209 – S-213 – H275
Salem, Oregon 97301

Re: \$1Million Klamath County Match / Klamath YIP Facility Project

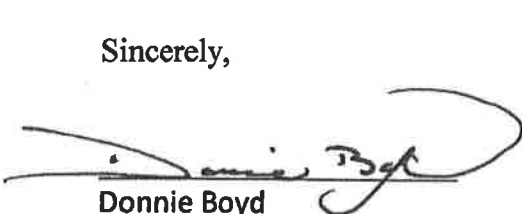
Dear Co-Chairs Senator Johnson and Senator Steiner Hayward:

Klamath County's Commissioners are in full support of the Klamath YIP facility project. To demonstrate our support, Commissioners are pledging **\$1 million** in county funds as match to the county request for **\$15 million** in Oregon Lottery Bond funds in 2019-21 for the project.

The Klamath YIP facility project will expand program capacity from nine beds to 24 beds for teenage female clients who are wards of state agencies. Klamath YIP specializes in gender-responsive behavioral treatment and education to stabilize client's behaviors so they can be successful in community settings instead of correctional placement.

We look forward to working with the Oregon Legislature and Governor Brown to support passage of this request. We can all work together to provide a positive future for these clients who are truly Oregon's responsibility.

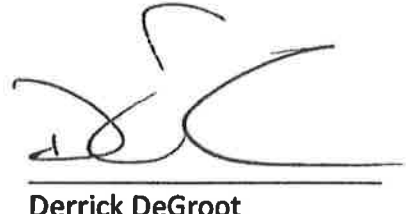
Sincerely,



Donnie Boyd
Chair



Kelley Minty Morris
Vice Chair



Derrick DeGroot
Commissioner



The Klamath Tribes

Tribal Council

Senate President Peter Courtney
900 Court Street, NE, S-201
Salem, Oregon 97301

August 23, 2018

Senator Jackie Winters
900 Court Street, NE, S-323
Salem, Oregon 97301

House Speaker Tina Kotek
900 Court Street, NE, Room 269
Salem, Oregon 97301

Representative Jennifer Williamson
900 Court Street, NE, H-295
Salem, Oregon 97301

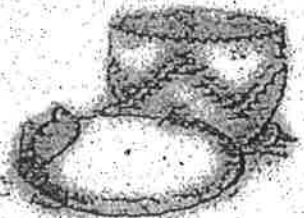
Representative Mike McLane
900 Court Street, NE, H-395
Salem, Oregon 97301

Re: Klamath Tribes Support the Klamath YIP Construction Project

Dear Oregon Legislators:

On August 8, 2018 the Klamath Tribal Council voted to endorse the Klamath Youth Inspiration Program Construction Project of the Klamath County Juvenile Department. The Klamath YIP project seeks state funds to tear down the oldest juvenile detention facility in Oregon and replace it with a residential treatment facility that will double bed space for teen girls who are clients of two state agencies. The project will increase treatment services for youth from all over Oregon, but also provide additional opportunities for Klamath Tribal youth close to home.

501 Chiloquin Blvd. – P.O. Box 436 – Chiloquin, Oregon 97624
(541) 783-2219 – Fax (541) 783-3706



The Klamath Tribes looks forward to our continued collaboration with the Klamath County Juvenile Department to increase positive outcomes for youth and families.

Please lend your support to fund this project in the coming biennium.

Thank you,

A handwritten signature in black ink, appearing to read 'Donald C. Gentry', written over a horizontal line.

Donald C. Gentry, Chairman
The Klamath Tribes

Feel the Power

12/21/18

Senator Fred Girod
Representative Paul Holvey
Co-Chairs, Sub-Committee on Capital Construction
Joint Committee on Ways and Means
900 Court Street NE, S-401, H-277
Salem, Oregon 97301

Re: Klamath YIP Construction Project – Governor's recommended budget

Dear Co-Chair Senator Girod and Co-Chair Representative Holvey:

Please support Governor Kate Brown's budget recommendation to invest \$12 million of Oregon Lottery funds in the Klamath Youth Inspiration Program facility project.

The Klamath YIP construction project aligns with the Governor's Child Welfare Policy Agenda by providing a residential treatment center for teenage girls in the custody of state agencies DHS and OYA. The goal is behavioral stabilization and educational achievement so clients can reintegrate back into their communities rather than falling into the corrections system.

The Klamath YIP project will generate 200 construction jobs over a two-year period and use Oregon building products and includes a net-zero solar array and on-site geo-thermal heating.

The teenagers served by Klamath YIP, girls from all over Oregon who are clients of DHS and OYA systems, need our attention. Please support the Governor's recommendation to fund the Klamath YIP construction project.

Thank you,



Zack Culver
Business Manager/Secretary Treasurer
Laborers International Local 737



Oregon

Kate Brown, Governor

Department of Human Services

Director's Office
500 Summer St NE, E-15
Salem, OR 97301
Office: 503-945-5600
Fax: 503-581-6198
TTY: 503-945-5896

February 1, 2019

Senator Betsy Johnson
900 Court Street NE, S-209
Salem OR 97301



Dear Senator Johnson,

When children and youth can't stay home safely, they become the responsibility of the Oregon Department of Human Services (DHS). While we strive to meet the needs of children and youth in their own communities, it's not always possible. Residential treatment programs are in short supply and the Klamath Youth Inspiration Program (YIP) facility project can help fill the gap. DHS is writing to express its support of the Governor's proposal to invest \$12 million of Oregon Lottery funds in the project.

The Klamath Youth Inspiration Program facility project helps address multiple challenges DHS experiences in serving youth in foster care who are at-risk of correctional placement.

- **Access to intensive residential treatment:** Children and youth who enter Oregon's foster care system have experienced trauma and many need high levels of care not readily available or easy to access. Many need a multidimensional approach to addressing their health issues and developing the behavioral skills needed to return home or transition to a community placement safely. The Klamath YIP facility project will provide more capacity to meet the demand for the high-acuity treatment the state is struggling to provide children and youth.
- **Gender-responsive treatment:** The percentage of girls in Oregon's juvenile justice system has grown significantly yet the number of non-profit residential programs for girls has shrunk. YIP is a program specifically designed for the rehabilitation of teenage girls in a gender-specific residential setting.
- **Location:** The areas where DHS lacks services and capacity the most are in the rural and southern parts of the state. The Klamath YIP facility project would enable DHS to provide care for more Oregon girls in a program capable of meeting each girl's unique needs. It also would enable us to meet our goals for serving more children and youth in or near their communities.

Klamath YIP recognized the potential of the girls it serves and has an evidence-based approach for launching them on a pathway to a successful future. It has proven successful in diverting girls from corrections placements and preparing them for



Letter to Senator Johnson re: Klamath Youth Inspiration Program (YIP) facility project

February 1, 2019

Page 2

community placements. It has established a network of services to deliver on the promise of its facility project. It creates much-needed capacity for DHS in an organization that is already a good partner to DHS. On behalf of the children and youth we care for, DHS offers its full support for the Klamath YIP facility project.

Sincerely,

A handwritten signature in black ink, appearing to read "Fariborz Pakseresht". The signature is fluid and cursive, with a large initial "F" and "P".

Fariborz Pakseresht, Director
Oregon Department of Human Services



Oregon

Kate Brown, Governor

Department of Human Services

Child Welfare, Self Sufficiency
District 11, Klamath / Lake Counties
700 Klamath Ave
Klamath Falls, OR 97601-6177
Child Welfare: 541-883-5570
Fax: 541-883-5545
Self Sufficiency: 541-883-5511
Fax: 541-883-5587



December 21, 2018

Dan Golden, Director
Klamath County Juvenile Department
3331 Vandenberg Road
Klamath Falls, OR 97603

Dear Mr. Golden,

It is with excitement that we write this letter in support of the upcoming work of the Klamath County Youth Inspiration Program (YIP) construction project. The Department of Human Services-Child Welfare has had a long-standing partnership with Klamath County YIP to provide needed service to the troubled and neglected youth of Klamath County. As a child welfare agency, we often struggle with placing teenage youth in a program that can accommodate their needs, provide them with the services they require while keeping them near their homes and family supports. We are often transporting children to other parts of the state for residential programs and treatment. So being able to serve our teenage girls locally will be a huge benefit to our children and families.

With the residential rehabilitation program providing gender-responsive programs, Qualified Mental Health Professionals for mental health treatment programs, while allowing the teenage girls to work on behavioral stabilization and address their educational needs is key to their ongoing success as they leave the child welfare and juvenile systems. The DHS is very committed to working with your agency upon the completion of this project and serving more teenage girls in our community.

We look forward to your progress.

Sincerely,

R.D. Maupin for J. Player

Jeremy Player, District Manager
Department of Human Services
700 Klamath Ave Suite 500
Klamath Falls, OR 97601
541-850-3658

"Assisting people to become Independent, Healthy and Safe"
An Equal Opportunity Employer





Public Safety Coordinating Council

"Promoting Public Safety Through Collaborative Partnerships and Strategic Thinking"

December 17, 2018

LPSCC OFFICERS

CHAIR, STAN GILBERT
Mental Health Director

CO- VICE CHAIR, EVE COSTELLO
District Attorney

VOTING MEMBERS

KELLEY MINTY-MORRIS
County Commissioner

HON. JUDGE ROXANNE OSBORNE
Klamath County Circuit Court Judge

CHRIS KABER
Sheriff

DAVID HENSLEE
Klamath Falls Chief of Police

RICHARD GARBUTT
Klamath Defense Services

AARON HARTMAN
Director of Community Corrections

DAN GOLDEN
Director of Juvenile Department

JENNIFER LITTLE
Director of Public Health

WANDA POWLESS
Victim Services Representative

NATHAN CHERPESKI
Klamath Falls City Manager

DAN TOFELL
Klamath Falls City Councilman

LAY CITIZENS

CHUCK WELLS

NON-VOTING MEMBERS

DONNY MILLER
OSP Representative

STUART HANSEN
OYA Representative

Representative Paul Holvey
Senator Fred Girod
Co-Chairs, Sub-Committee on Capital Construction
Joint Committee on Ways and Means
900 Court Street NE, H-277
Salem, Oregon 97301

RE: Klamath YIP Construction Project

Dear Representative Holvey and Senator Girod,

On December 5, 2018, our Local Public Safety Coordinating Council voted to support the construction of the Klamath Youth Inspiration Program (Klamath YIP) facility in Klamath Falls, Oregon.

Governor Brown requested \$12 million in lottery funds to fund our Klamath Youth Inspiration Program in her 2019 budget recommendation for the legislature. Klamath LPSCC supports this recommendation and asks the Legislature to fully fund this request.

Klamath Youth Inspiration Program provides stabilization services for teenage girls who are clients of the Oregon Youth Authority (OYA) and Department of Human Services (DHS). Utilizing trauma-informed, gender-responsive, evidence-based treatment, including intensive mental health services, Klamath YIP diverts teen girls from escalating into the juvenile detention and adult correctional facilities.

This funding will build a new residential center designed to emphasize intensive gender-responsive behavioral treatment for clients committed to OYA and DHS. The new construction will double the size of the program, expanding treatment services for years to come for hundreds of young girls who are clients of state agencies.

There has never been a greater need to address this growing population of teen girls who are entering into state agencies for services. Klamath LPSCC recognizes the need for these services for each teen girl who may be helped to leave the system, rather than become a long term member. Klamath YIP will be able to do this with the services mentioned above.

Klamath County Local Public Safety Coordinating Council requests you ask your fellow legislators to make this project a top priority and to fully fund this project.

Thank you,

Stan Gilbert
CEO, Klamath Basin Behavioral Health
Chair, Local Public Safety Coordinating Council



Marci W. Adkisson
Circuit Judge

Circuit Court of the State of Oregon

THIRTEENTH JUDICIAL DISTRICT
KLAMATH COUNTY COURTHOUSE
316 MAIN STREET
KLAMATH FALLS, OREGON 97601
(541) 883-5626 EXT. 252
Fax: 541-883-5620

Claudia Nikola
Judicial Support Specialist

December 7, 2018

Representative Paul Holvey, Representative Fred Girod
Co-Chairs, Sub-Committee on Capital Construction
Joint Committee on Ways and Means
900 Court Street NE, H-277
Salem, Oregon 97601

RE: Klamath YIP Construction Project

Dear Representatives Holvey and Girod,

Please accept this letter in continued support for Capital Construction funds to support construction of the Klamath Youth Inspiration Program (Klamath YIP) facility in Klamath Falls, Oregon.

Klamath YIP provides stabilization services for teenage girls who are clients of the Oregon Youth Authority (OYA) and Department of Human Services (DHS). Through trauma-informed, gender-responsive, evidence-based treatment, including intensive mental health services, Klamath YIP diverts teen girls from escalating into juvenile detention and correctional facilities.

Klamath YIP proposes to build a new residential center designed to emphasize intensive gender-responsive behavioral treatment for female clients committed to DHS and OYA. The new construction will double the size of the program, expanding treatment services for years to come for hundreds of girls who are clients of state agencies. There has never been a greater need to provide treatment services for teen girls so they can be diverted from detention and corrections.



It is my understanding that Governor Brown's recommended budget for 2019-2020 includes 12 million dollars for the Klamath YIP project. The current program is operating at capacity and they are serving young women from all over Oregon, filling a desperate need in our State.

Please encourage your fellow legislators to make this project a top priority for this vulnerable population.

Thank you,

A handwritten signature in black ink that reads "Marci Adkisson". The signature is written in a cursive style with a long horizontal flourish at the end.

Honorable Marci Adkisson
Presiding Judge, 13th Judicial District