



OREGON

DEPARTMENT OF AGRICULTURE
OREGON AGRICULTURAL WATER QUALITY PROGRAM

LISA HANSON, DEPUTY DIRECTOR

STEPHANIE PAGE, PROGRAM AREA DIRECTOR

APRIL 23, 2019

KEY MESSAGES

Program

- Outcome-based
- Reflects the diversity of Oregon's landscape and agriculture
- Continuously improving, significant change in the last 5 years

Agency coordination

- Oregon Department of Agriculture (ODA) – regulatory compliance
- Department of Environmental Quality (DEQ) – scientific and technical analysis, responsible for multiple nonpoint and point sources
- Oregon Watershed Enhancement Board (OWEB) – supports agency priorities to achieve uplift
- Oregon Department of Fish and Wildlife – part of statewide and local Coordinated Streamside Management Team

Top priorities moving forward

- Strategic Implementation Areas
- Coordinated Streamside Management expansion

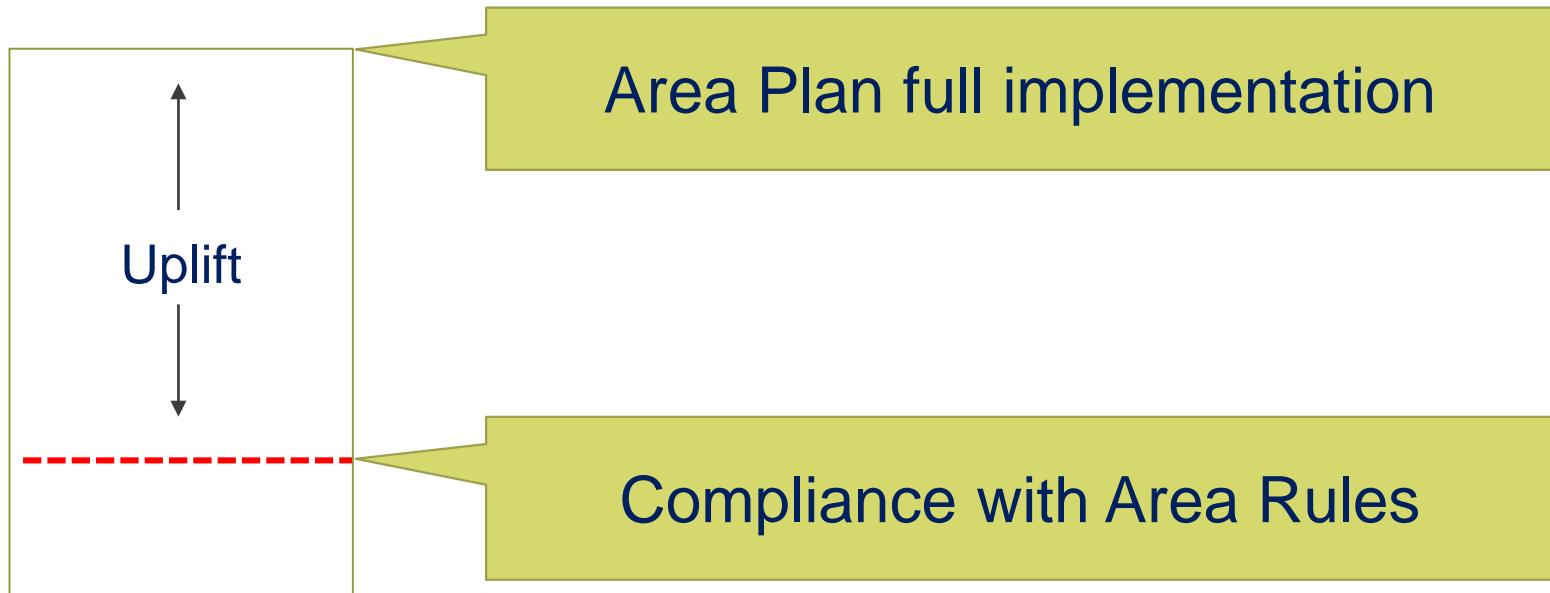
AG WATER QUALITY PROGRAM HISTORY

Year	Milestone
1993	Senate Bill 1010 authorizes Ag Water Quality Program
1997	Funding for ODA to develop and implement Area Plans and Rules; funding for tech assistance at SWCDs
1997-2004	38 Area Plans and Rules developed and adopted
2004-2012	Ag Water Quality regulator efforts predominately complaint-based; voluntary implementation ongoing
2012 - 2017	ODA works with partners to pursue more comprehensive strategy to better document outcomes through SIA process and Conservation Effectiveness Partnership
2017 - present	Coordinated Streamside Management approach providing additional support for monitoring and capacity at SWCDs in each SIA

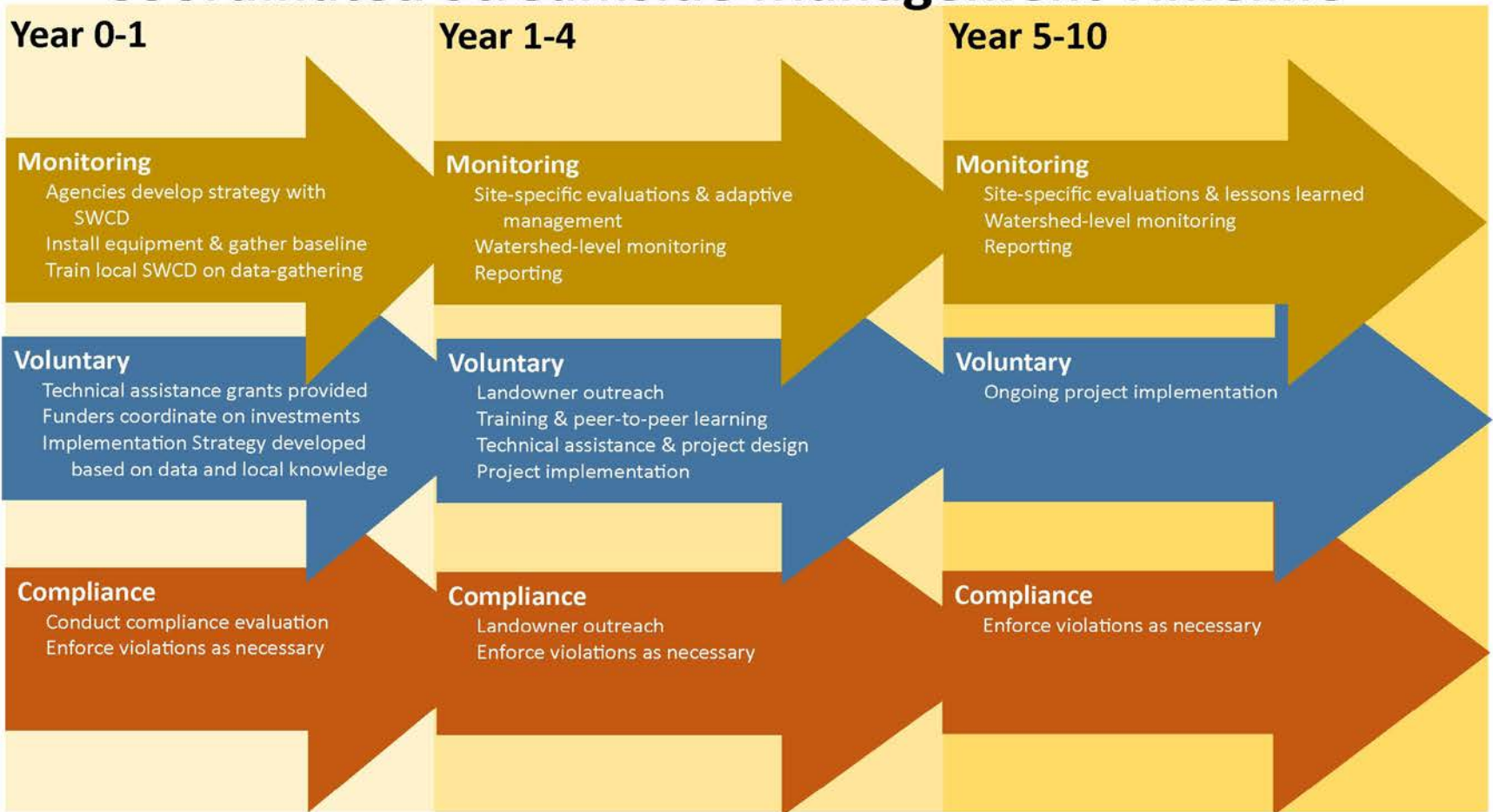


AG WATER QUALITY COMPLIANCE VS LOCAL AREA PLANS

Ecological uplift is greater with full area plan implementation than with only area rule compliance

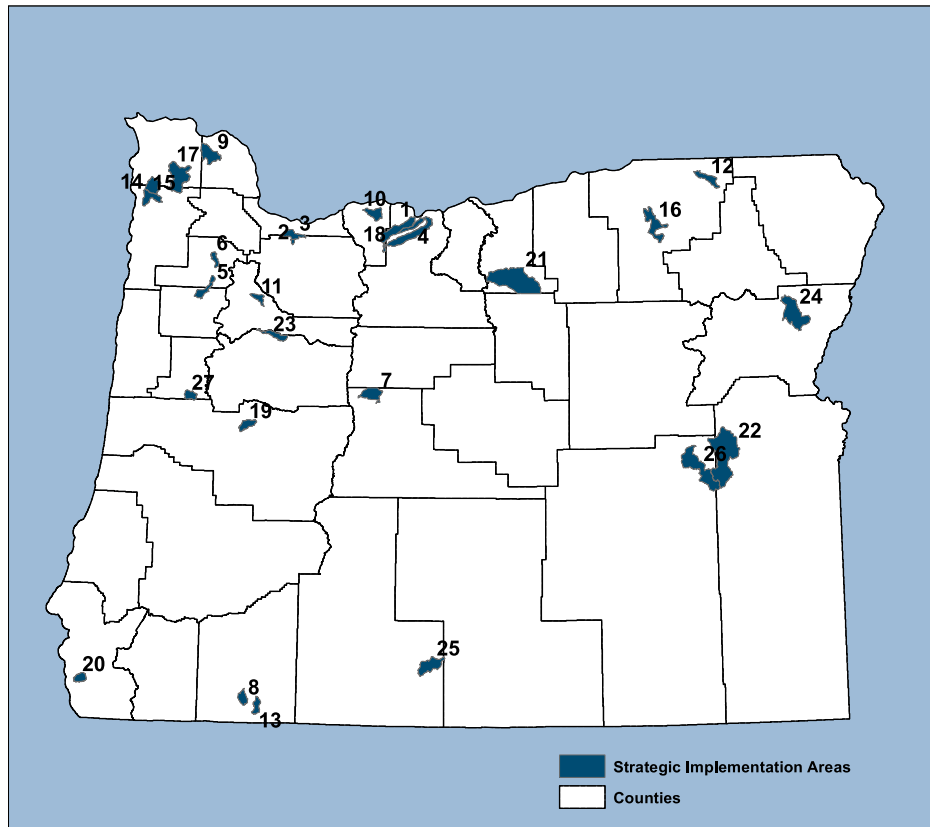


Coordinated Streamside Management Timeline

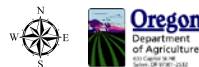




STRATEGIC IMPLEMENTATION AREAS



**Strategic
Implementation
Areas**



ACHIEVING OUTCOMES – 15 MILE WATERSHED



August 1992



September 2013



MOVING FORWARD

- Prioritize work
- 2019-2021 agency request budget
- Continued work with partners
- Continual evaluation and maturity of program to address water quality issues



Thank you