

Doug Kelsey
General Manager
TriMet

Joint Committee on Transportation

April 8, 2019



Outline

- Quick review of TriMet
- State Transit Improvement Fund
- Major projects

- Mission and Values -

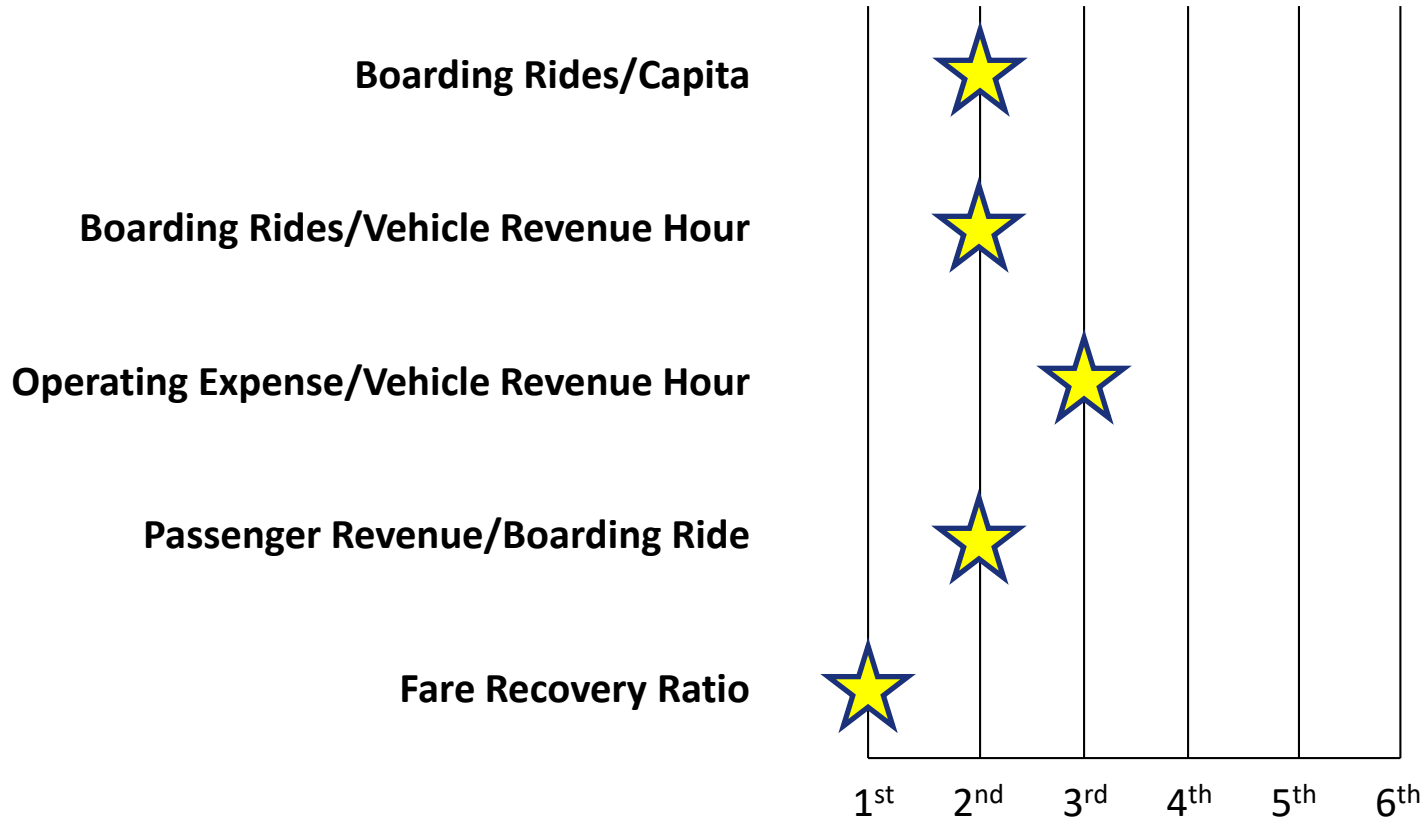
- Connect people to jobs, services and retail
- Cost effectively relieve congestion in peaks
- Serve seniors, people with disabilities, youth and low income
- Help shape regional growth
- Maintain financial strength
- Advance equity

- Agency Profile -

- Just under 100 million trips per year
- Just shy of 300,000 trips per day
- 12 million per year by seniors and people with disabilities
- 45% of downtown commuters in rush-hour
- 200,000 daily car trips eliminated

- Key Performance Indicators -

Ranking Among Peer Group



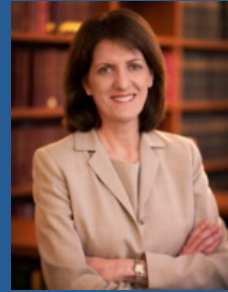
- Governance Structure -



Bruce Warner,
Chair



Keith Edwards



Lori Irish-Bauman



Kathy Wei



Travis Stovall,
Vice Chair



Linda Simmons



Ozzie Gonzalez

Financial Performance

AAA Bond Rating

MOODY'S
ANALYTICS

STANDARD
& POOR'S

Favorable Opinon	Total Favorable
Federal Government	26%
ODOT	65%
Metro	53%
Your City	52%
Your County	58%
TriMet	73%

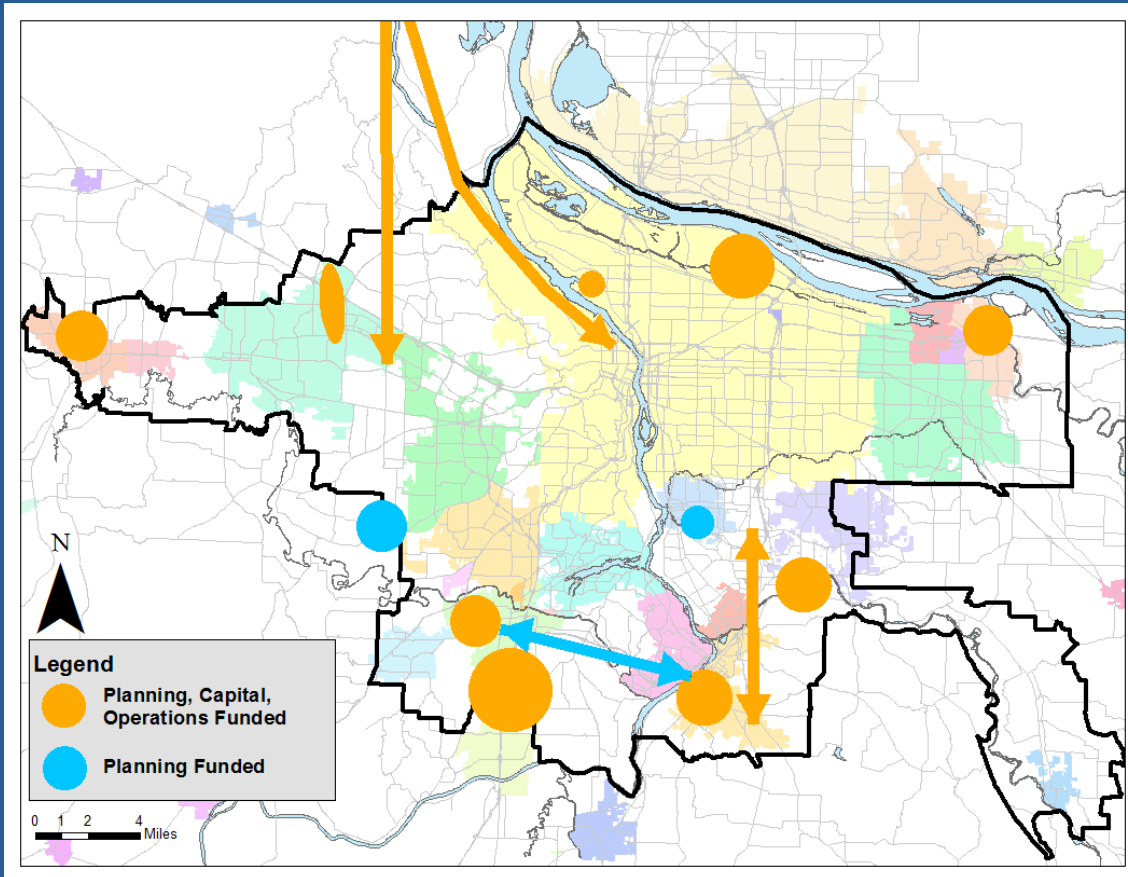
- TriMet Community Input -

- Transit Equity Advisory Committee (TEAC)
 - ~17 members
 - Equity, enforcement & diversity
- Committee on Accessible Transportation (CAT)
 - 15 members
 - Access, ADA & fares
- Statewide Transportation Improvement Fund (STIF)
 - 28 members
 - Issues related to service expansion, discounted fares, investments

- Trans. Improvement Fund (STIF) -

- Thank you!
- Regional process & outcomes
- TriMet service expansion
- TriMet battery electric bus

- Regional Coordination Projects -

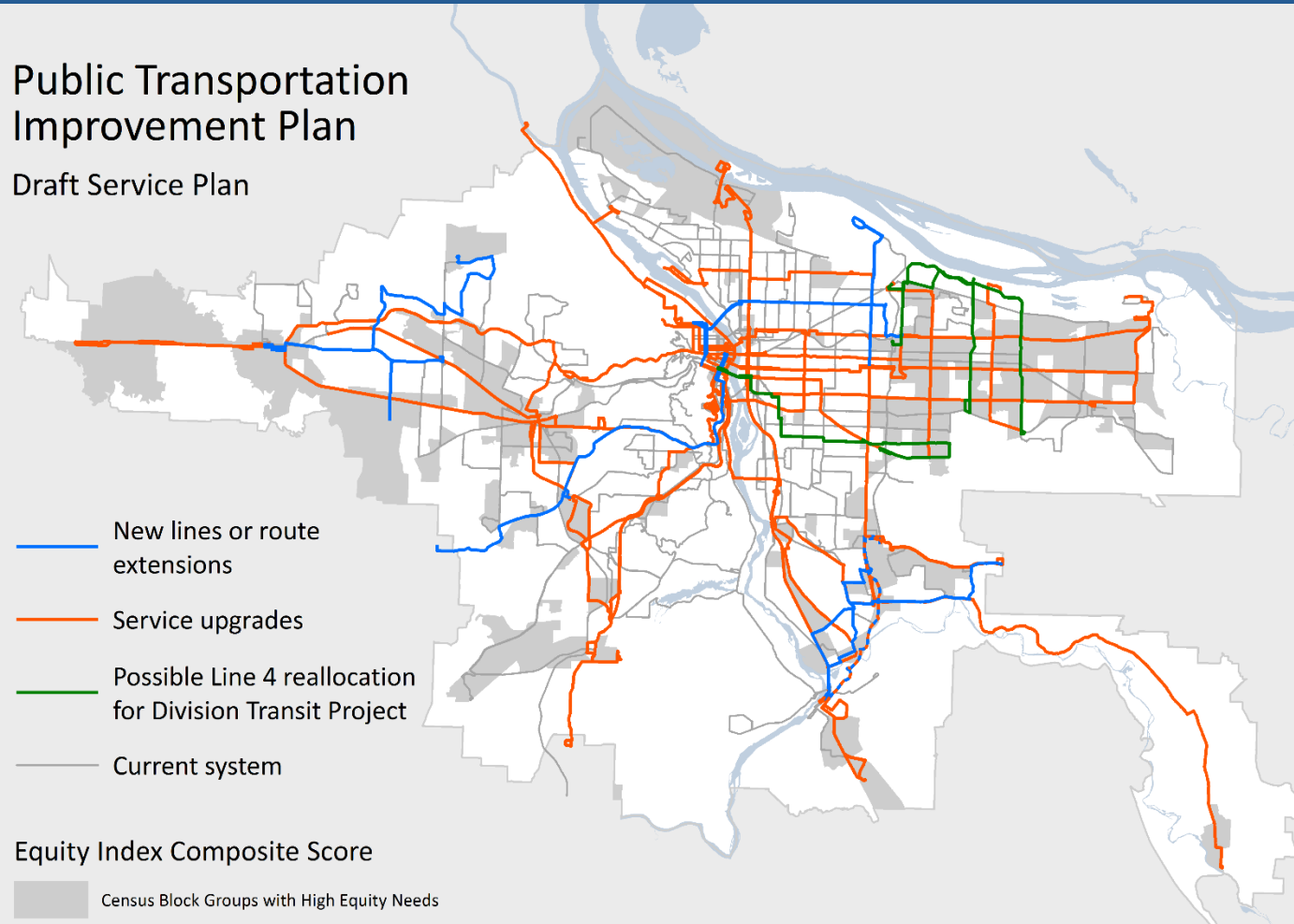


- Washington County
- Multnomah County
- Clackamas County
- Shuttles
- SMART
- Sandy
- Canby
- S. Clack. Trans. Dist.
- CC Rider

- HB 2017 STIF Funded Improvements -

Public Transportation Improvement Plan

Draft Service Plan

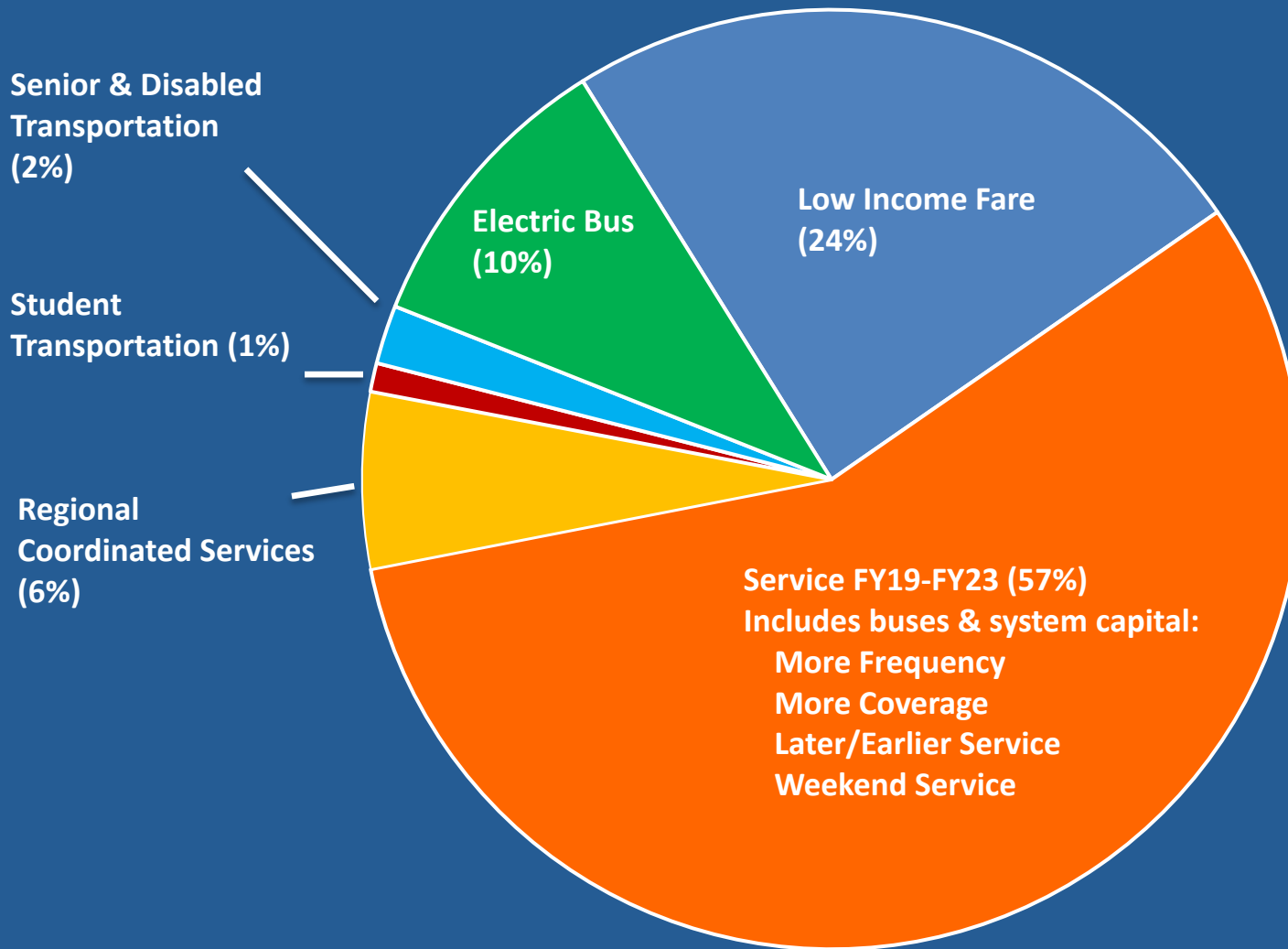


Improvements
5 new bus lines
3 weekend improvements
7 route extensions or route changes
10 frequency upgrades
8 early/late/midday improvements
2 24-hr. service additions
5 new 15-min. Frequent Service Lines
4 Frequent Service Lines upgraded to 12 min. service

- TriMet Electric Bus Plan -



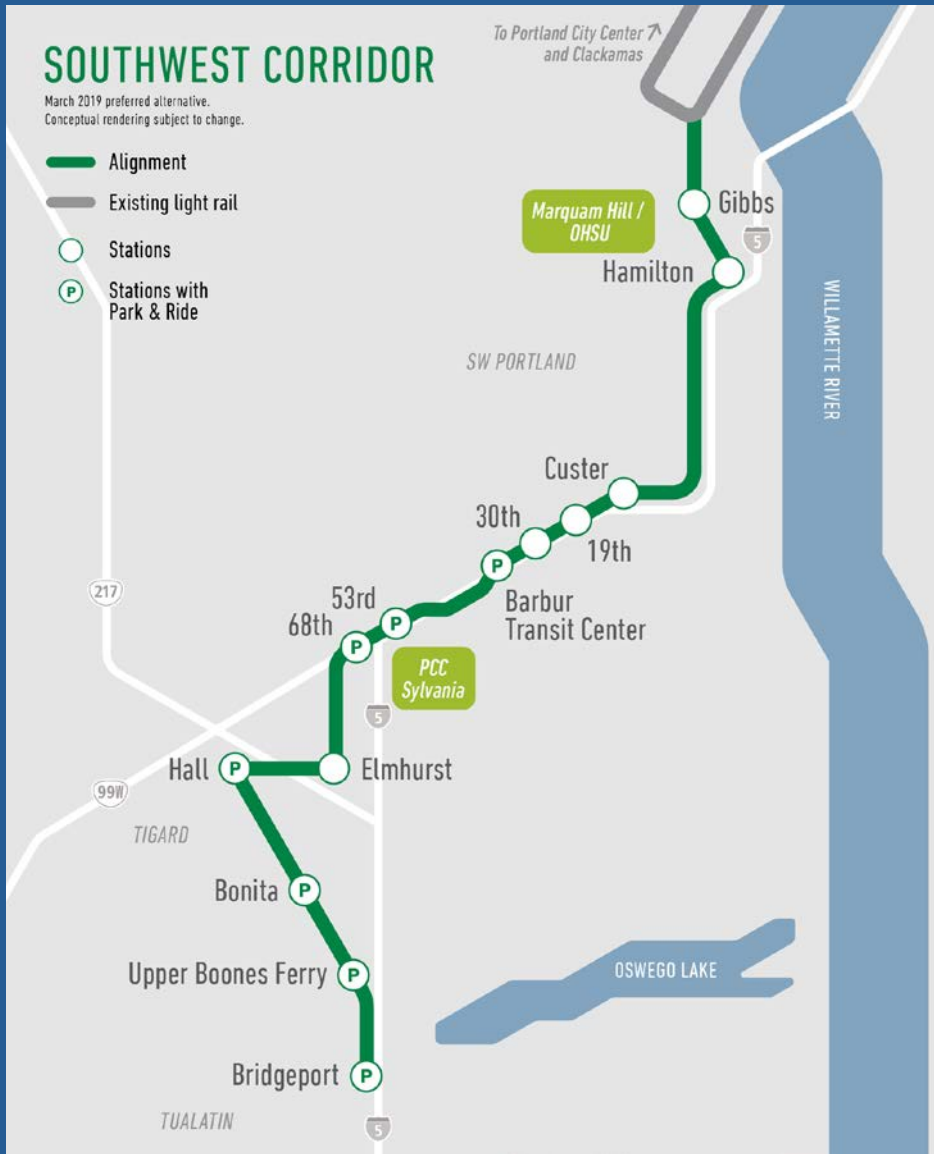
- STIF Funding Allocation -



- Division Transit Project -

PSU OHSU OMSI and PCC PCC and Jade District East Portland Gresham





SW Corridor Light Rail Project

- 12 mile extension from SW Portland to Tualatin
- PSU, OHSU, PCC
- Fast growing corridor
- I-5 congestion
- Few alternatives

- Questions and Discussion -

