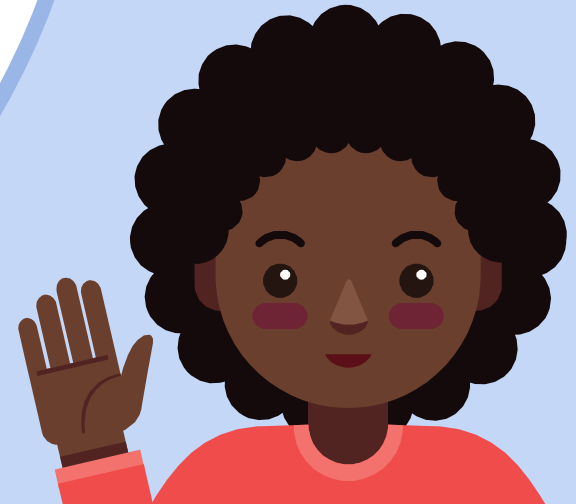


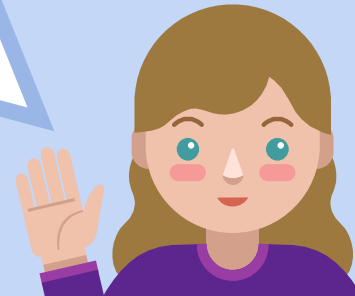
House Bill 3165 Hearing 3/26/19

Maureen Hinman, Oregon School-Based Health Alliance



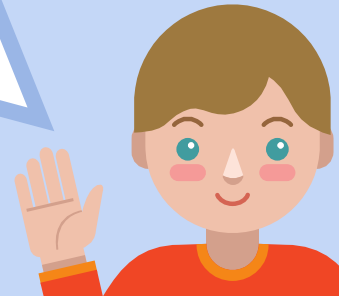


School
Communities
Identify and
Prioritize the School
Health Services that
Best Fit Based on
Needs and Available
Resources



School-Based Health Centers (SBHCs) and Mental Health

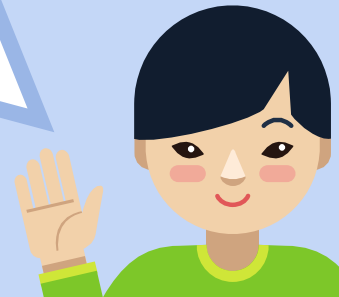
- Adolescents 10-21x more likely to get mental health services at an SBHC.
- Youth at SBHCs with mental health capacity were:
 - 12% less likely to report a depressive episode
 - 16% less likely to report suicidal ideation
 - 18% less likely to report a suicide attempt



SBHCs are Cost Effective

- Reduce inappropriate emergency room use
- Help CCO's meet their metrics on adolescent well visits, immunizations, and more.
- Leverage >\$3 for every \$1 the state invests.

There are 149 school districts without an SBHC.



Flexible Funding

Planning Grants

- Community Engagement
- Partnership Development
- Business Planning



OR



School Mental Health

School Nurse Model

Trauma Informed Care

Thanks!

Any questions?

maureen@osbha.org

