



# OREGON

DEPARTMENT OF AGRICULTURE

## Pesticide Overview

House Agriculture and Land Use

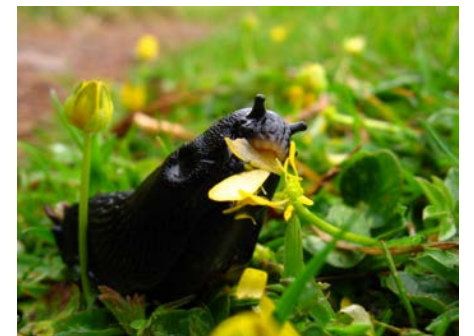
March 26, 2019

Presented by  
ODA Director Alexis Taylor

## WHAT IS A PESTICIDE?

Any substance or mixture of substances intended for:

- Preventing
- Destroying
- Repelling or
- Mitigating any pest



## EXAMPLES OF PESTICIDES

- Herbicides – weeds
- Plant growth regulators – crops
- Fungicides – powdery mildew
- Insecticide –ants, cockroaches, fleas, aphids
- Molluscicide – slug snails
- Antimicrobials – viruses, bacteria
- Rodenticide – mice, rats
- Repellents – mosquitoes



## HOUSEHOLD PRODUCTS





## GENERAL USE PRODUCTS





## RESTRICTED USE



DuPont™  
Breakfree® ATZ  
herbicide



WARHAWK CLEARFORM | Loveland ...

ODA Restricted Use Pesticides list available online  
<https://oda.direct/RUP>



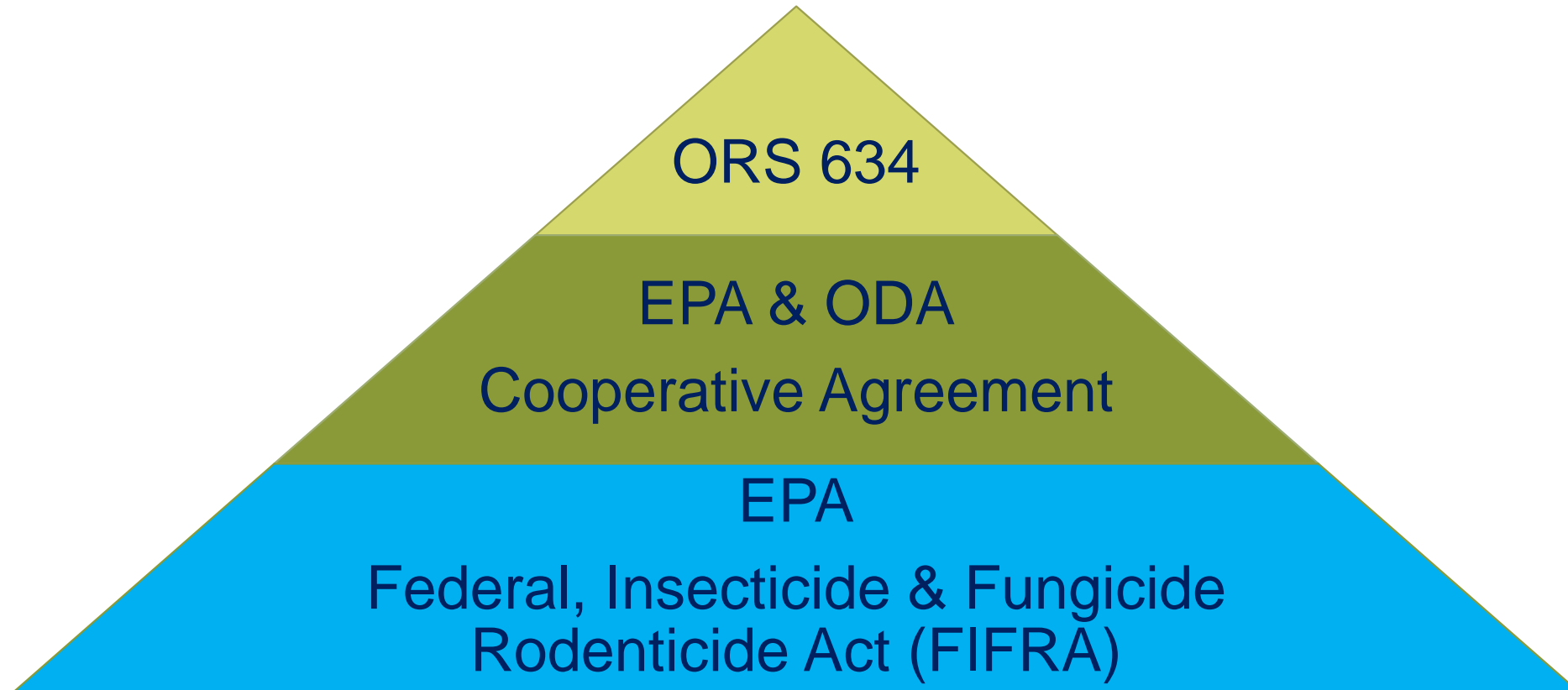
## PESTICIDE USE SITES







## PESTICIDE SALES, USE AND DISTRIBUTION



\*Oregon OSHA oversees most worker protection standard



## ENVIRONMENTAL PROTECTION AGENCY JURISDICTION

### Federal Insecticide, Fungicide and Rodenticide Act:

- Register pesticides for use in U.S.
- Evaluate new pesticides & uses
- Review safety of older pesticides
- Register pesticide producing establishments
- Develop & enforce pesticide requirements
- Provide for special local needs & emergency situations



# DIRECTIONS AND RESTRICTIONS

## CHRISTMAS TREES

PEST	RATE	APPLICATION INSTRUCTIONS AND PRECAUTIONS
root weevil spruce spider mite	3.9 to 6.4 fl. oz. per acre (0.06 to 0.1 lb. ai per acre)	<p>For spray applications, cover foliage with sufficient water to provide thorough, uniform coverage and distribution of spray mixture.</p> <p>For ground applications, use a minimum of 20 gallons of spray mixture per acre.</p> <p>For air applications, use a minimum of 5 gallons of spray mixture per acre.</p> <p>This product is normally not phytotoxic to Christmas trees. Since all varieties grown under local climatic conditions may be hardy to this product, test a small area of typical plants to ensure that no injury occurs.</p> <p>Do not apply more than 0.1 lb. a.i. (6.4 fl. oz. formulated product) per acre per year.</p> <p>Do not make more than 3 applications per year.</p> <p>Do not make applications less than 21 days apart.</p> <p>Do not make applications through irrigation systems.</p> <p>For use only in OR &amp; WA.</p>

## OREGON DEPARTMENT OF AGRICULTURE JURISDICTION

### FIFRA compliance monitoring for EPA

- Inspections
- Pesticide registration & use regulation

### Oregon Pesticide Control Act

- Sales, use & distribution
- Pesticide user licensing & recertification
- Pesticide registration
- Routine compliance monitoring
- Pesticide use investigations

## ODA PESTICIDE PROGRAM

- Administrator & policy specialist (shared)
- 2 Program Managers
- Office Manager (shared)
- 3 Support Staff
- 14 Investigators, case reviewers & lead investigator
- 5 Licensing, certification, & registration specialists
- Pesticide Analytical & Response Center (PARC) Coordinator
- Citizen advocate
- Pesticide Stewardship Program (PSP) Coordinator





## 2018 ODA LICENSING DATA

Operators	911
Commercial applicators	3,561
Trainees	1,649
Apprentice	708
Public applicators	2,012
Private applicators	4,161
Consultants	721
Dealers	248
Aerial applicators	92

## 2018 ODA REGISTERED PRODUCTS

General use	13,320
Restricted use products	495
Total registered products	13,815

## INVESTIGATION PROCESS

Record all complaints

Follow-up on complaints

Collect Evidence

Compliance Decision

Enforcement action

## ODA INVESTIGATION ACTIVITIES

	<b>2014</b>	<b>2015</b>	<b>2016</b>	<b>2017</b>	<b>2018</b>
Complaint	200	280	325	250	250
*Routine	175	200	260	380	375
*Other	125	81	106	57	75
<b>Total</b>	<b>500</b>	<b>561</b>	<b>691</b>	<b>687</b>	<b>700</b>

\*Marijuana Compliance Assistance Program (MCAP) included in Routine & Other  
 2017 = 107  
 2018 = 100



## OTHER PESTICIDE RESOURCES

- PARC
- PSP
- 211
- Citizen Advocate
- Oregon State University
- National Pesticide Information Center (NPIC)
- Oregon OSHA – Worker Protection & Hazard Communication
- Oregon Poison Control Center
- Oregon Department of Forestry
- Oregon Department of Environmental Quality





## COMPLIANCE, EDUCATION & OUTREACH

- Collaborative efforts with OSU
- Worker Protection Standard education
- Oregon Bee Project
- Integrated Pest Management (IPM)
  - General
  - School



Oregon State  
University





**Thank You**