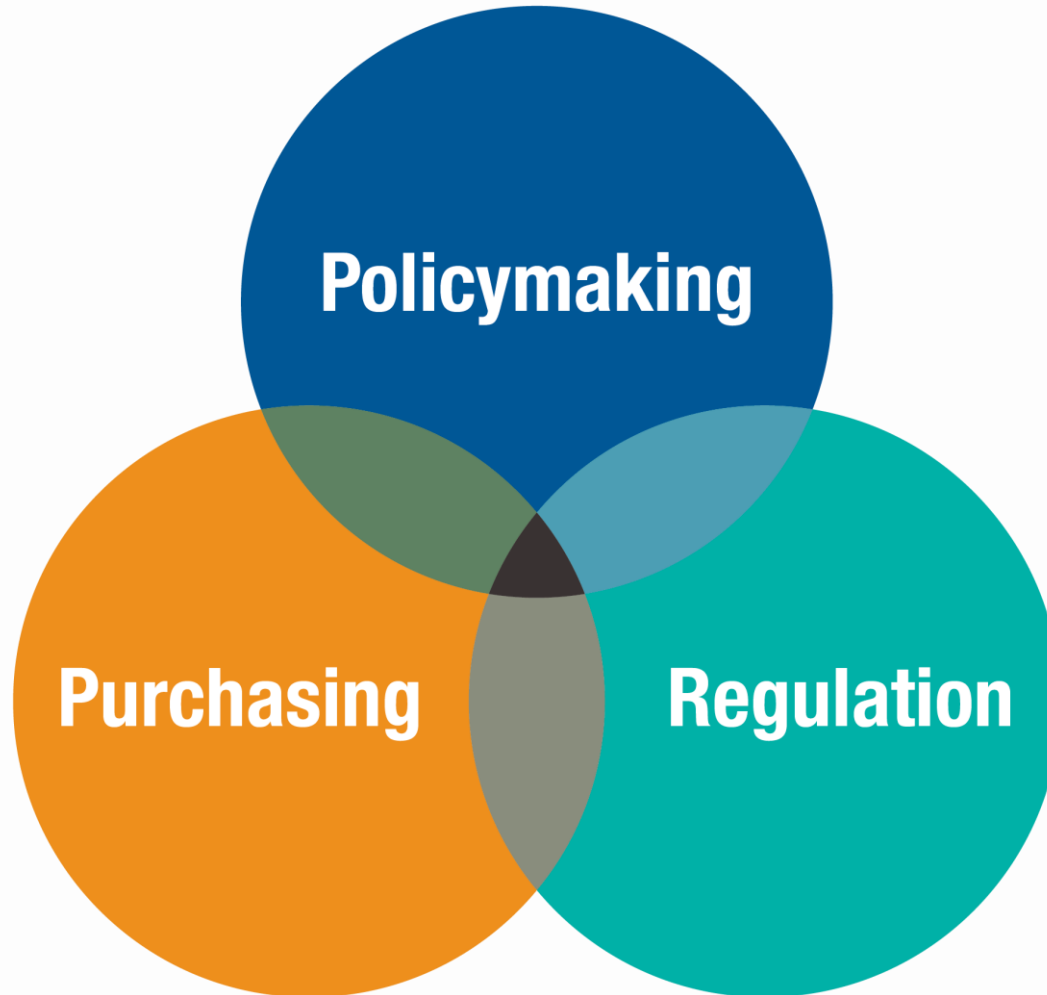

Oregon Health Authority Wrap Up

Presented to
Joint Committee on Ways and Means
Subcommittee on Human Services
March 27, 2019

Patrick Allen, Oregon Health Authority Director



Oregon Health Authority's Job



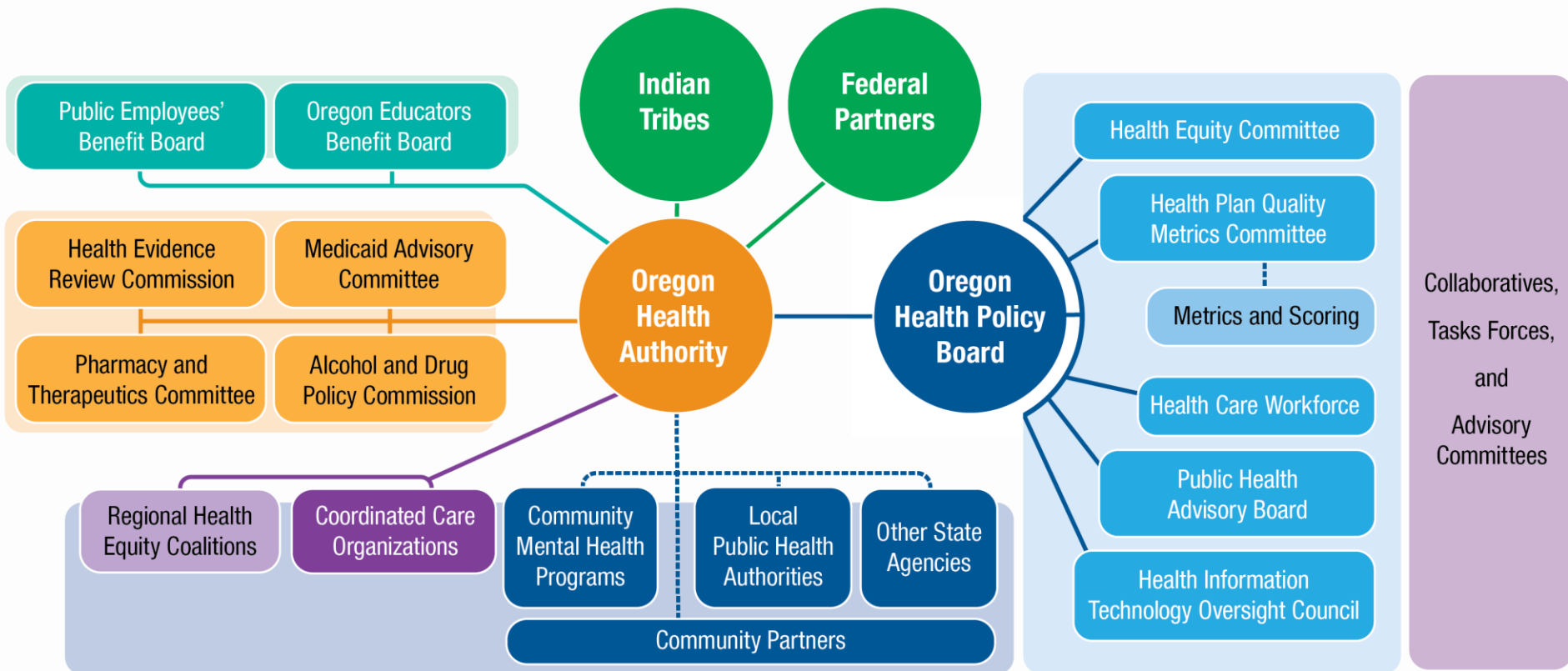
The Triple Aim Vision for Oregon

1 Better health

2 Better care

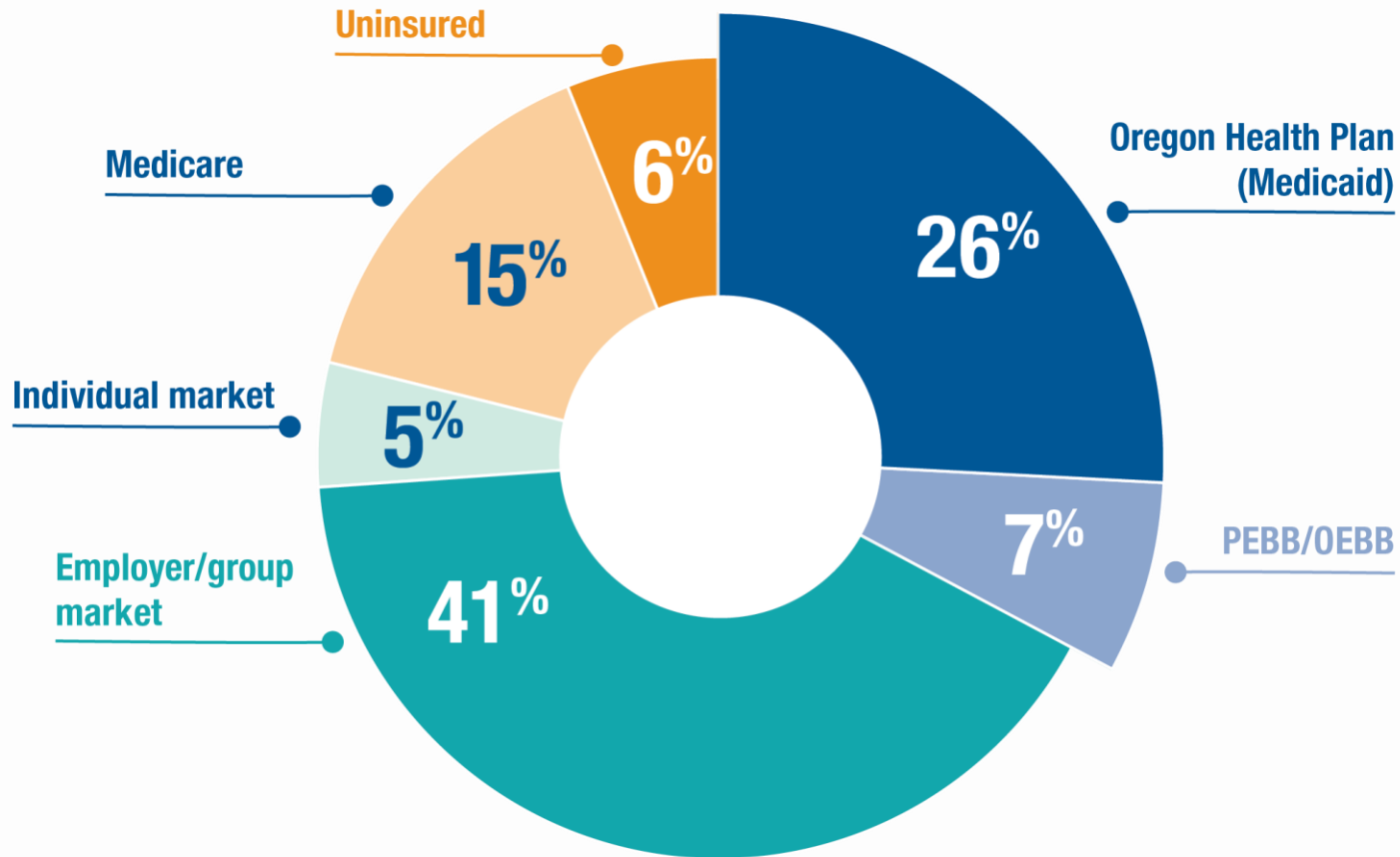
3 Lower costs

Oregon Health Authority's Partnerships



Health Coverage in Oregon

1 In 3 Oregonians get health care coverage directly from OHA



Key Performance Measures

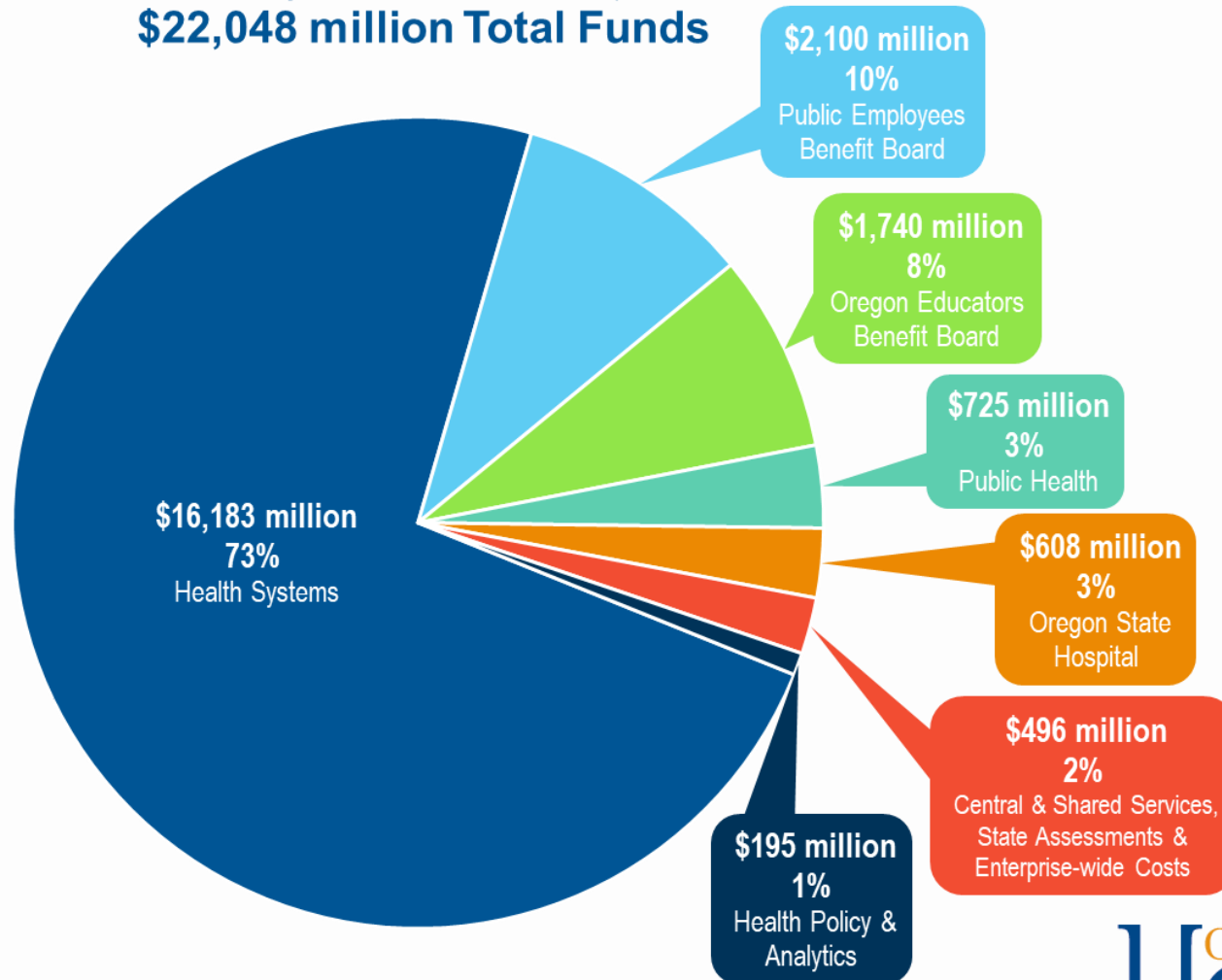
1. Percentage of members with a new episode of alcohol or other drug dependence who received initiation of AOD treatment within 14 days of diagnosis.
2. Percentage of members with a new episode of alcohol or other drug dependence who received two or more services within 30 days of initiation visit.
3. Percentage of enrollees 6 years of age and older who were hospitalized for treatment of mental health disorders and who were seen on an outpatient basis or were in intermediate treatment within seven days of discharge.
4. Percentage of children in DHS custody who receive a mental, physical, and dental health assessment within 60 days of the state notifying CCOs that the children were placed into custody with DHS (foster care).
5. Percentage of children newly prescribed attention-deficit/hyperactivity disorder (ADHD) medication who had at least three follow-up care visits within a 10-month period, one of which was within 30 days of when the first ADHD medication was dispensed.
6. Percentage of children newly prescribed attention-deficit/hyperactivity disorder (ADHD) medication who had at least three follow-up care visits within a 10-month period, one of which was within 30 days of when the first ADHD medication was dispensed.
7. Percentage of 6th graders who have used illicit drugs in the past 30 days.
8. Percentage of 6th graders who have used alcohol in the past 30 days.
9. Percentage of 8th graders who have used illicit drugs in the past 30 days.
10. Percentage of 8th graders who have used alcohol in the past 30 days.
11. Percentage of 11th graders who have used illicit drugs in the past 30 days.
12. Percentage of 11th graders who have used alcohol in the past 30 days.
13. Percentage of women who initiated prenatal care in the first 3 months of pregnancy.
14. Percentage of women who initiated prenatal care within 42 days of enrollment.
15. Number of members enrolled in patient-centered primary care homes by tier.
16. Admission rate for diabetes short-term complications.
17. Admission rate for COPD or asthma in older adults.
18. Admission rate for congestive heart failure.
19. Percentage of members who responded "always" or "usually" too getting care quickly (composite for adult and child).
19. Admission rate for asthma in younger adults.
20. Composite measurement: how well doctors communicate; health plan information and customer service (Medicaid population).
21. Percentage of CAHPS survey respondents with a positive self-reported rating of overall health (excellent, very good, or good).
22. Rate of tobacco use among adults.
23. Percentage of CCO enrollees who currently smoke cigarettes or use tobacco every day or some days.
24. Percentage of adults who are obese among Oregonians.
25. Percentage of reproductive age women in Oregon who are at risk of unintended pregnancy using an effective method of contraception.
26. Percentage of reproductive age women on Medicaid who are at risk of unintended pregnancy using an effective method of contraception.
27. Percentage of adults ages 50-64 who receive a flu vaccine.
28. Percentage of children who are adequately immunized (immunization series 4:3:1:3:3:1:4).
29. Percentage of children who are adequately immunized (immunization series 4:3:1:3:3:1:4).
30. Percentage of acute inpatient stays that were followed by an acute readmission for any diagnosis within 30 days and the predicted probability of an acute readmission for members 18 years and older.
31. Median number of days processing time from date of request to eligibility determination.
32. Percent of Oregon Health Plan members enrolled in Coordinated Care Organizations.
33. Percentage of OHA customers rating their satisfaction with the agency's customer service as "good" or "excellent" overall, timeliness, accuracy, helpfulness, expertise, availability of information.

Challenges

- How do we close the gap in the six-year state Medicaid budget, resulting from reduced federal funding, expiring revenue sources, and inflation?
- How do we continue to transform health care and lower costs in Oregon when nationally health care expenditures are projected to grow much faster?
- How do we help families give their children a healthy start in life?
- How do we ensure that everyone who needs behavioral health services can access the right service in the right place at the right time?
- How do we continue to modernize our public health system, to keep Oregon communities healthy and safe?
- How do we address health disparities in Oregon?

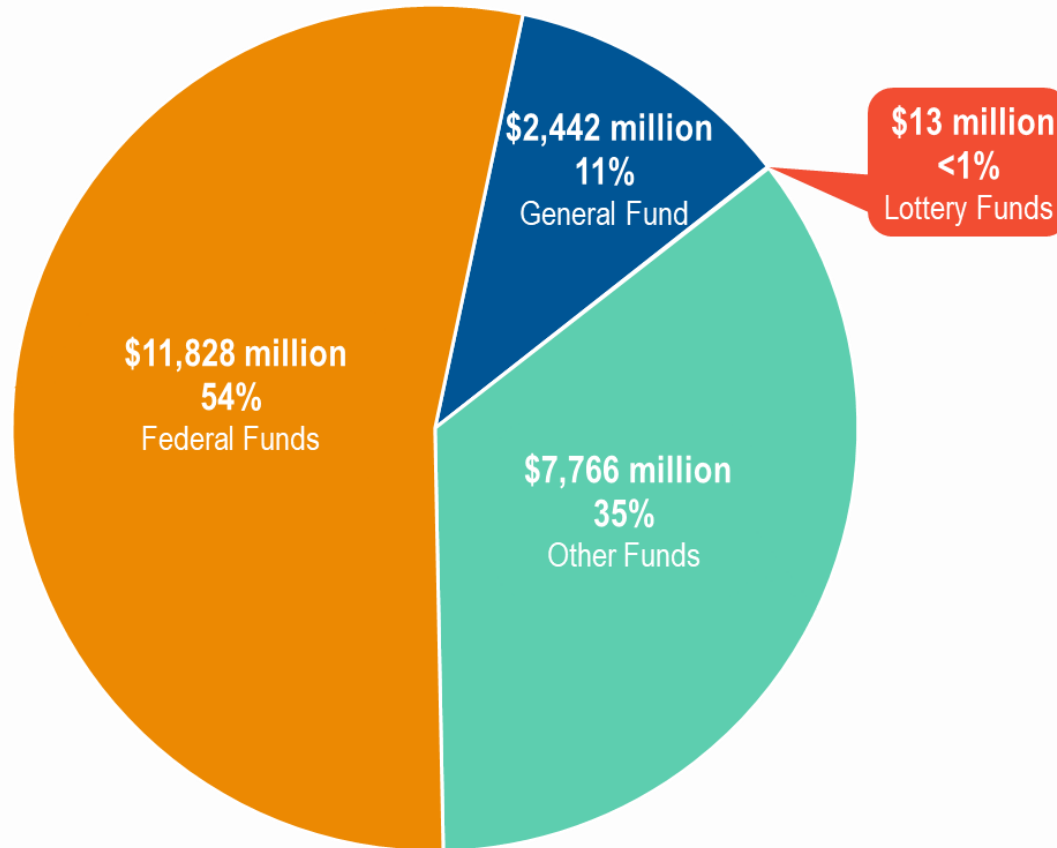
2019-21 Governor's Budget by Division

Oregon Health Authority
\$22,048 million Total Funds



2019-21 Governor's Budget by Fund Type

Oregon Health Authority
\$22,048 million Total Funds



Thank You

Health
Oregon
Authority