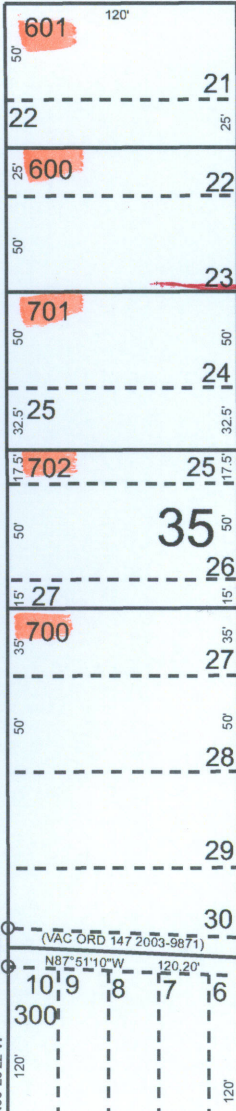


OREGON

SECOND ST (SECOND ST) NE

SECOND ST

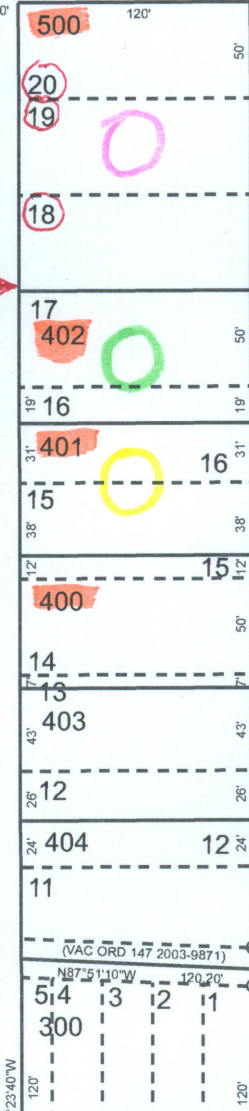


NE

(THIRD ST)

ST

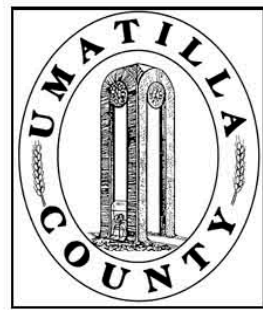
THIRD ST



60'

20.02'

This map was prepared for Assessment & Taxation purposes only and was NOT prepared nor is it suitable for legal, engineering or surveying purposes.

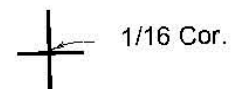


SE 1/4 NE 1/4 SEC 10 T2N R32E WM
UMATILLA COUNTY

2N3210AD

AERIAL PHOTO NO NZ-4P-103

SCALE: 1" = 100'

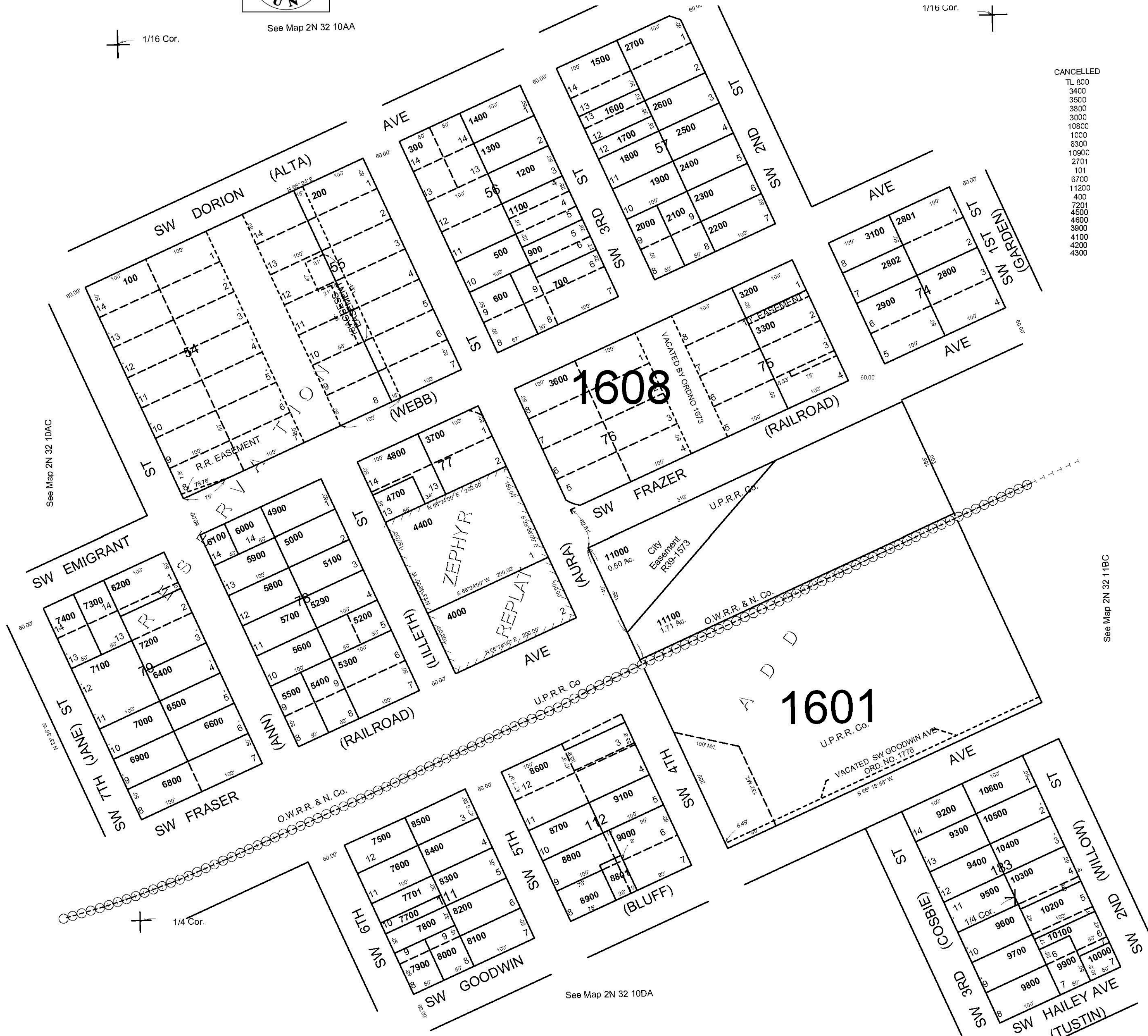


See Map 2N 32 10AA

1/16 Cor.



- CANCELLED
- TL 800
 - 3400
 - 3500
 - 3800
 - 3000
 - 10900
 - 1000
 - 6300
 - 10900
 - 2701
 - 101
 - 6700
 - 11200
 - 400
 - 7201
 - 4500
 - 4800
 - 3900
 - 4100
 - 4200
 - 4300



See Map 2N 32 10AC

See Map 2N 32 10DA

1/4 Cor.

See Map 2N 32 10DA

See Map 2N 32 11BC

Revised: 03-16-17

2N3210AD

This map was prepared for Assessment & Taxation purposes only and was NOT prepared nor is it suitable for legal, engineering or surveying purposes.

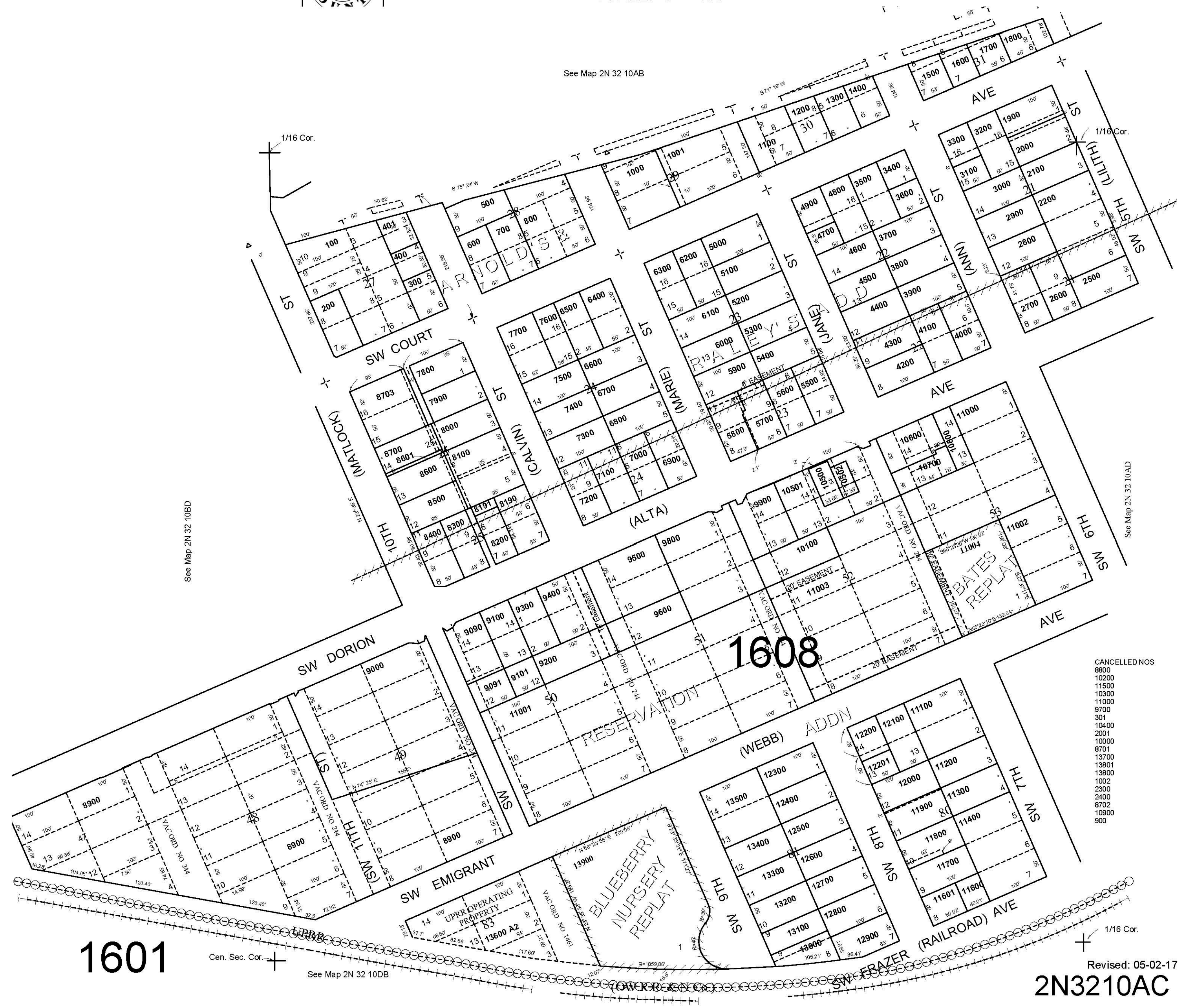


SW1/4 NE1/4 SEC 10 T2N R32E WM
UMATILLA COUNTY

2N 32 10AC
AERIAL PHOTO NO NZ-4P-103

SCALE: 1" = 100'

See Map 2N 32 10AB



See Map 2N 32 10BD

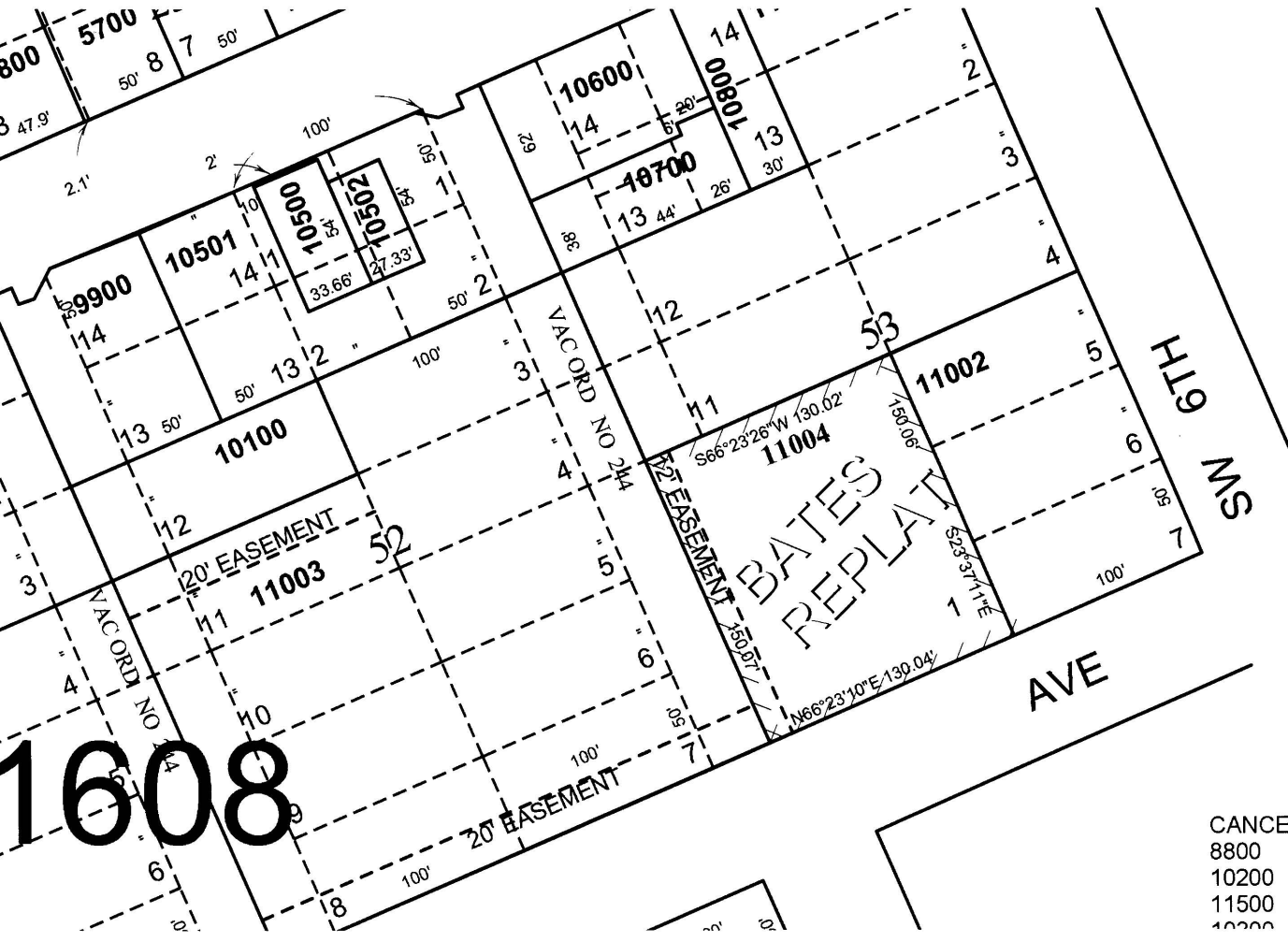
See Map 2N 32 10AD

- CANCELLED NOS
- 8900
 - 10200
 - 11500
 - 10300
 - 11000
 - 8700
 - 501
 - 10400
 - 2001
 - 10000
 - 8701
 - 13700
 - 13800
 - 1000
 - 2300
 - 2400
 - 8702
 - 10900
 - 900

1601

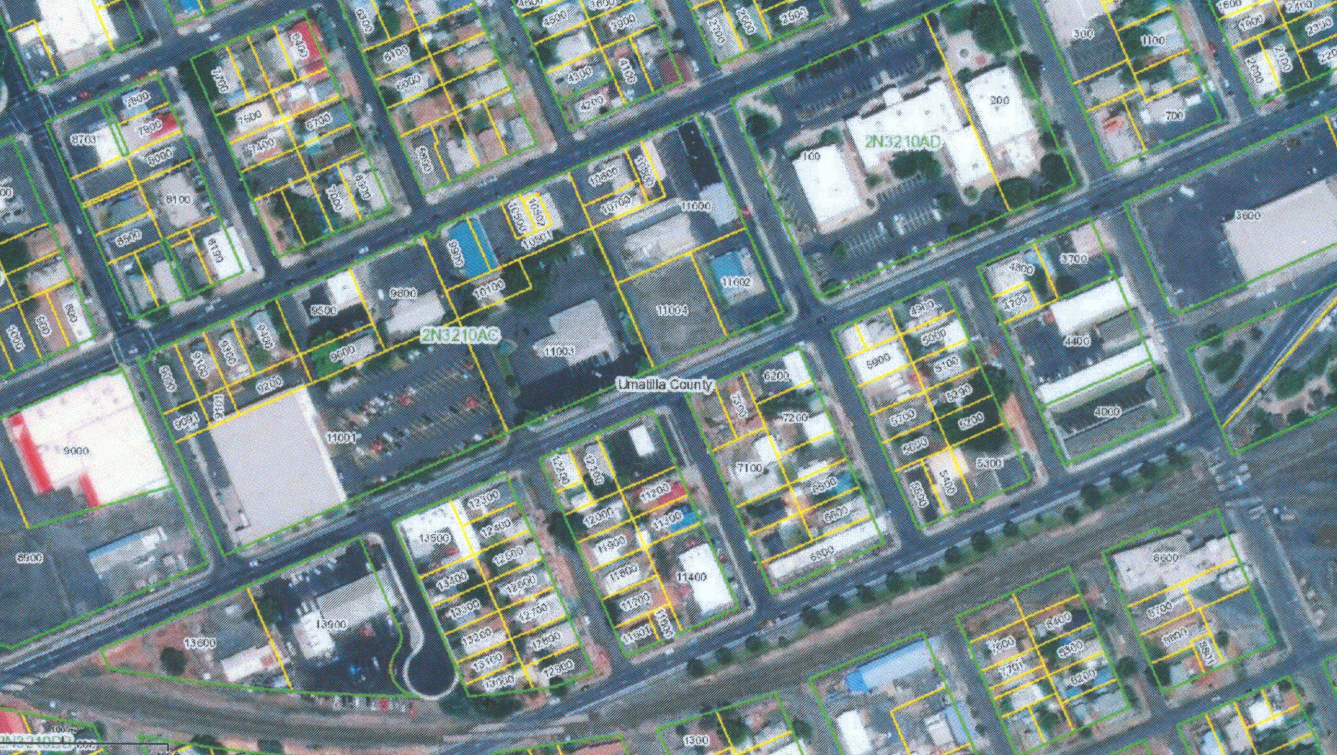
Cen. Sec. Cor. See Map 2N 32 10DB

Revised: 05-02-17
2N3210AC



1608

- CANCE
- 8800
- 10200
- 11500
- 10000

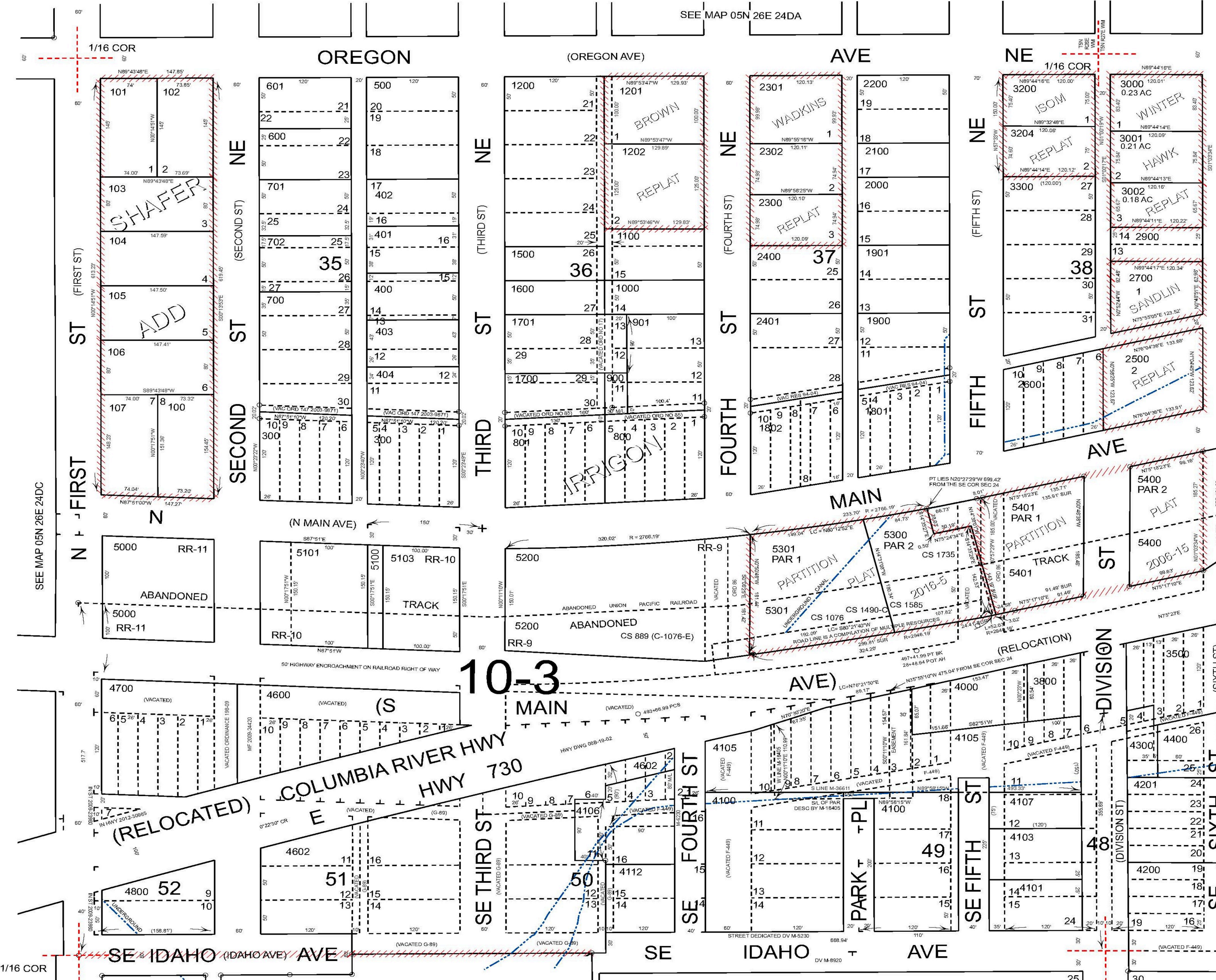


2N3210AD

2N3210AC

Umatilla County





SEE MAP 05N 26E 24DA

OREGON

(OREGON AVE)

AVE

NE

1/16 COR

1/16 COR

ST (FIRST ST)

NE (SECOND ST)

NE (THIRD ST)

NE (FOURTH ST)

NE (FIFTH ST)

NE (SIXTH ST)

ST (FIRST ST)

NE (SECOND ST)

NE (THIRD ST)

NE (FOURTH ST)

NE (FIFTH ST)

NE (SIXTH ST)

ST (FIRST ST)

NE (SECOND ST)

NE (THIRD ST)

NE (FOURTH ST)

NE (FIFTH ST)

NE (SIXTH ST)

ST (FIRST ST)

NE (SECOND ST)

NE (THIRD ST)

NE (FOURTH ST)

NE (FIFTH ST)

NE (SIXTH ST)

ST (FIRST ST)

NE (SECOND ST)

NE (THIRD ST)

NE (FOURTH ST)

NE (FIFTH ST)

NE (SIXTH ST)

ST (FIRST ST)

NE (SECOND ST)

NE (THIRD ST)

NE (FOURTH ST)

NE (FIFTH ST)

NE (SIXTH ST)

ST (FIRST ST)

NE (SECOND ST)

NE (THIRD ST)

NE (FOURTH ST)

NE (FIFTH ST)

NE (SIXTH ST)

SE IDAHO AVE (IDAHO AVE)

SE IDAHO AVE

AVE

AVE

1/16 COR

1/16 COR

SEE MAP 05N 26E 25AA

10-3

(RELOCATED)
COLUMBIA RIVER HWY
HWY 730

UNDERGROUND

ABANDONED UNION PACIFIC RAILROAD

MAIN

AVE

SE IDAHO AVE (IDAHO AVE)

SE IDAHO AVE

AVE

AVE

1/16 COR

1/16 COR

SEE MAP 05N 26E 25AA

(RELOCATED)
COLUMBIA RIVER HWY
HWY 730

UNDERGROUND

ABANDONED UNION PACIFIC RAILROAD

MAIN

AVE

SE IDAHO AVE (IDAHO AVE)

SE IDAHO AVE

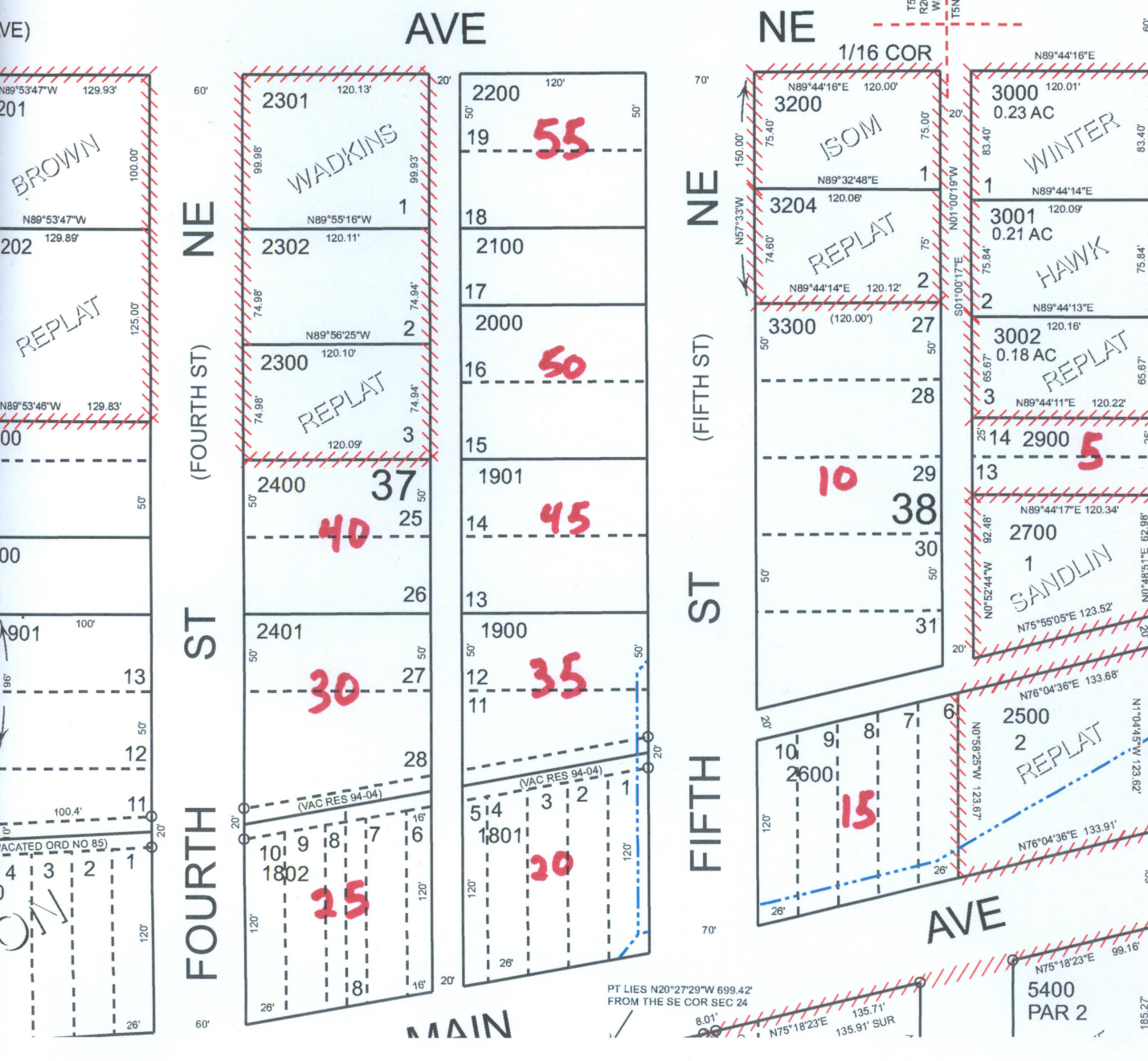
AVE

AVE

1/16 COR

1/16 COR

SEE MAP 05N 26E 25AA



AVE

NE

1/16 COR

NE
FOURTH ST
(FOURTH ST)

NE
FIFTH ST
(FIFTH ST)

MAIN

AVE

PT LIES N20°27'29"W 699.42'
FROM THE SE COR SEC 24

5400
PAR 2

2301 120.13' 20'

2302 120.11' 1

2300 120.10' 2

2400 120.09' 3

2401 50' 25

2402 120' 1802

25

WADKINS

REPLAT

2200 120' 50'

2100 18

2000 17

1900 15

1901 14

1900 13

1801 12

1801 11

514 3

20

ISOM

REPLAT

(VAC RES 94-04)

3200 120.00' 1

3204 120.06' 1

3300 (120.00') 27

30

31

ISOM

REPLAT

3000 120.01' 0.23 AC

3001 120.09' 0.21 AC

3002 120.16' 0.18 AC

2900 120.22'

2700 120.34'

2500 123.67'

2600 123.67'

2500 133.91'

WINTER

HAWK

SANDLIN

REPLAT

2600 120' 10' 9' 8' 7' 6'

2500 123.67'

2500 133.91'

15

REPLAT

201 100.00'

202 129.89'

200 129.83'

200 100'

201 100'

13

12

11

10

9

8

7

6

5

4

3

2

1

BROWN

REPLAT

(VACATED ORD NO 85)

8.01'
N75°18'23"E 135.71'
135.91' SUR

185.22'



05N26E24DB

05N26E24DA

05N27E19CB

05N26E24DC

05N26E24DD

05N27E19CC

Morrow County

ROADS

100 m
150 ft

111, 115, 103, 113, 113, 100, 140, 141, 117, 142, 110, 143, 119, 144, 145, 120, 146, 147, 148, 1801, 203

101, 901, 500, 701, 402, 401, 460, 403, 404, 700, 900, 104, 105, 106, 107, 100

1200, 1202, 1800, 1701, 901, 1700, 801, 600

2301, 2302, 2400, 2401, 1802, 2200, 2100, 2600, 1901, 1900, 3200, 3204, 3300, 2600, 2500, 3001, 3002, 2700

1001, 1002, 1010, 900, 200, 201, 1500, 1201, 3200, 3600, 5401, 5400, 5300, 5301, 5400, 3500, 3501, 3400, 3401, 3301, 3302, 3700, 3300

1100, 1100

5000, 5101, 5103, 4700, 4600, 4602, 4106, 4100, 4107

5200, 5301, 4000, 4105, 4300, 4100, 4107, 4301, 3700

3301, 3302, 3300

3600

3100

05N26E24DA

1200

1202

1300

1501

901

1700

Morrow County

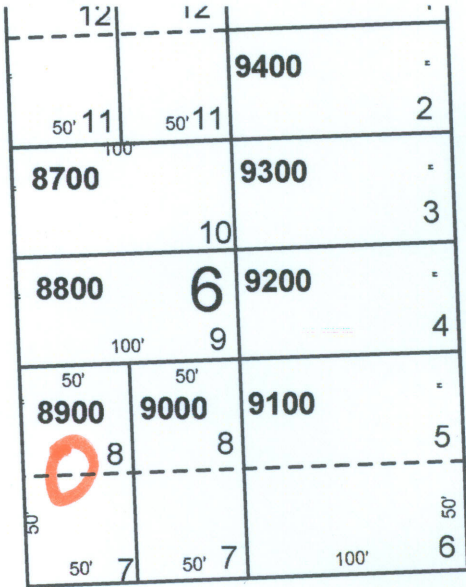
05N26E24DD

601

600

(PERKINS)

N.W. 7TH



(LOGAN)

N.W. 6TH

AVENUE

