

Oregon Connectivity Assessment and Mapping Project



Rachel Wheat, PhD
Wildlife Connectivity Coordinator



2007



Oregon Habitat Connectivity Consortium



Our approach is to fill critical knowledge gaps by completing connectivity assessment and mapping at fine resolutions across Oregon, conduct extensive outreach to encourage a diverse group of partners to utilize and implement the results from the assessment, and to make all data and results from our analyses easy to find, view, and understand.



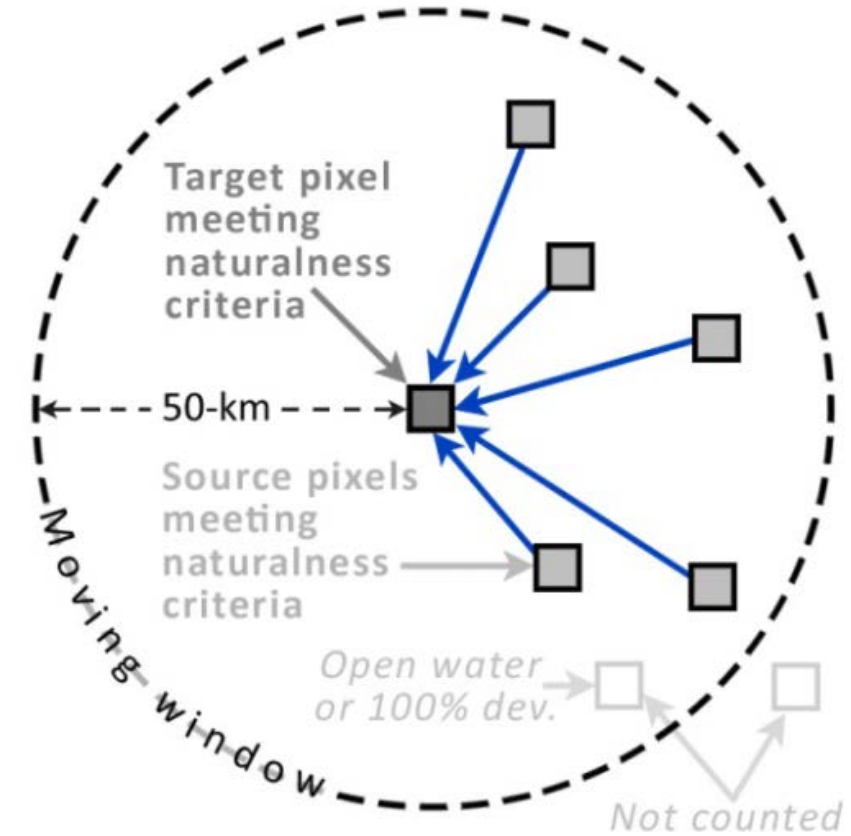
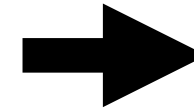
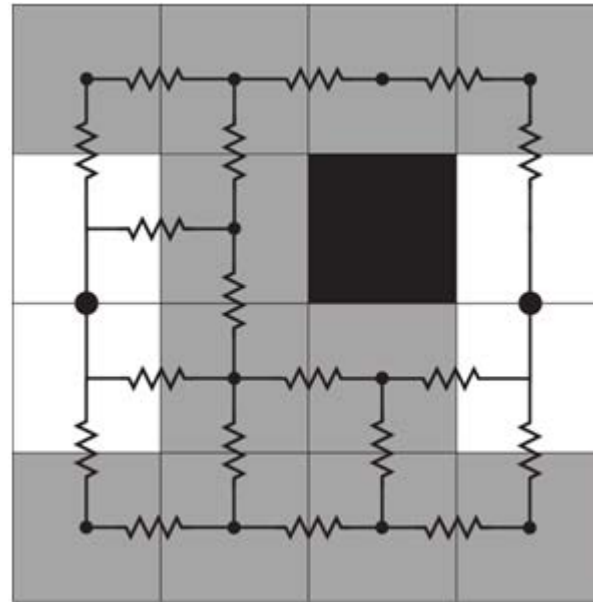
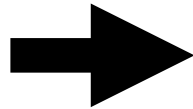
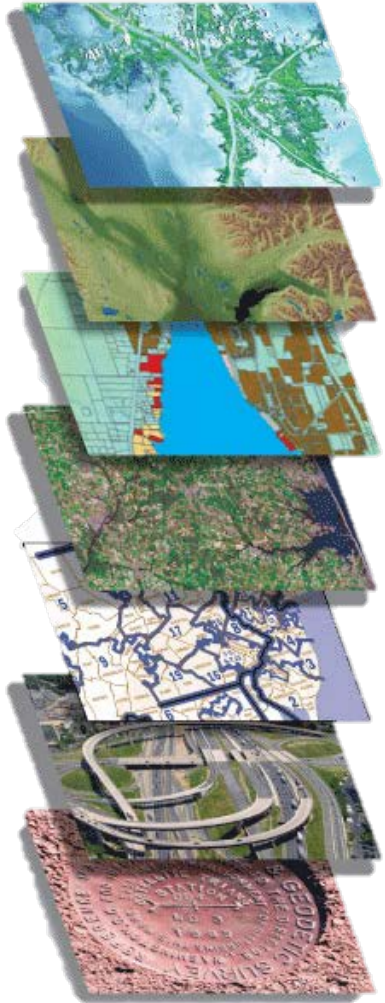
Steps

- Species selection
- Model building and validation
- Prioritization (for each species)
- Compositing maps
- Prioritization (for all species)
- Outreach and engagement
- Product distribution

Species selection



Model building and validation



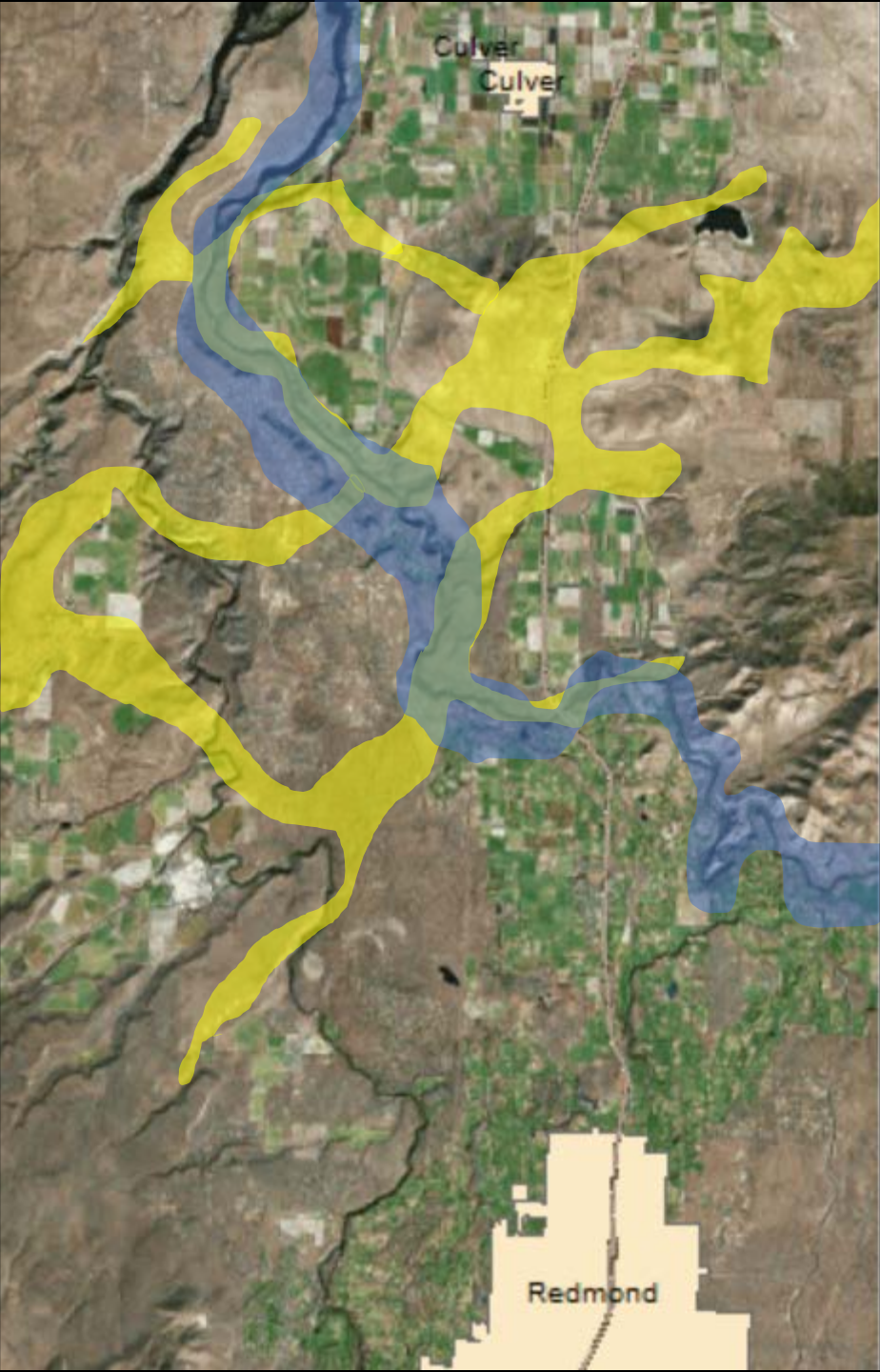
Prioritization



Prioritization



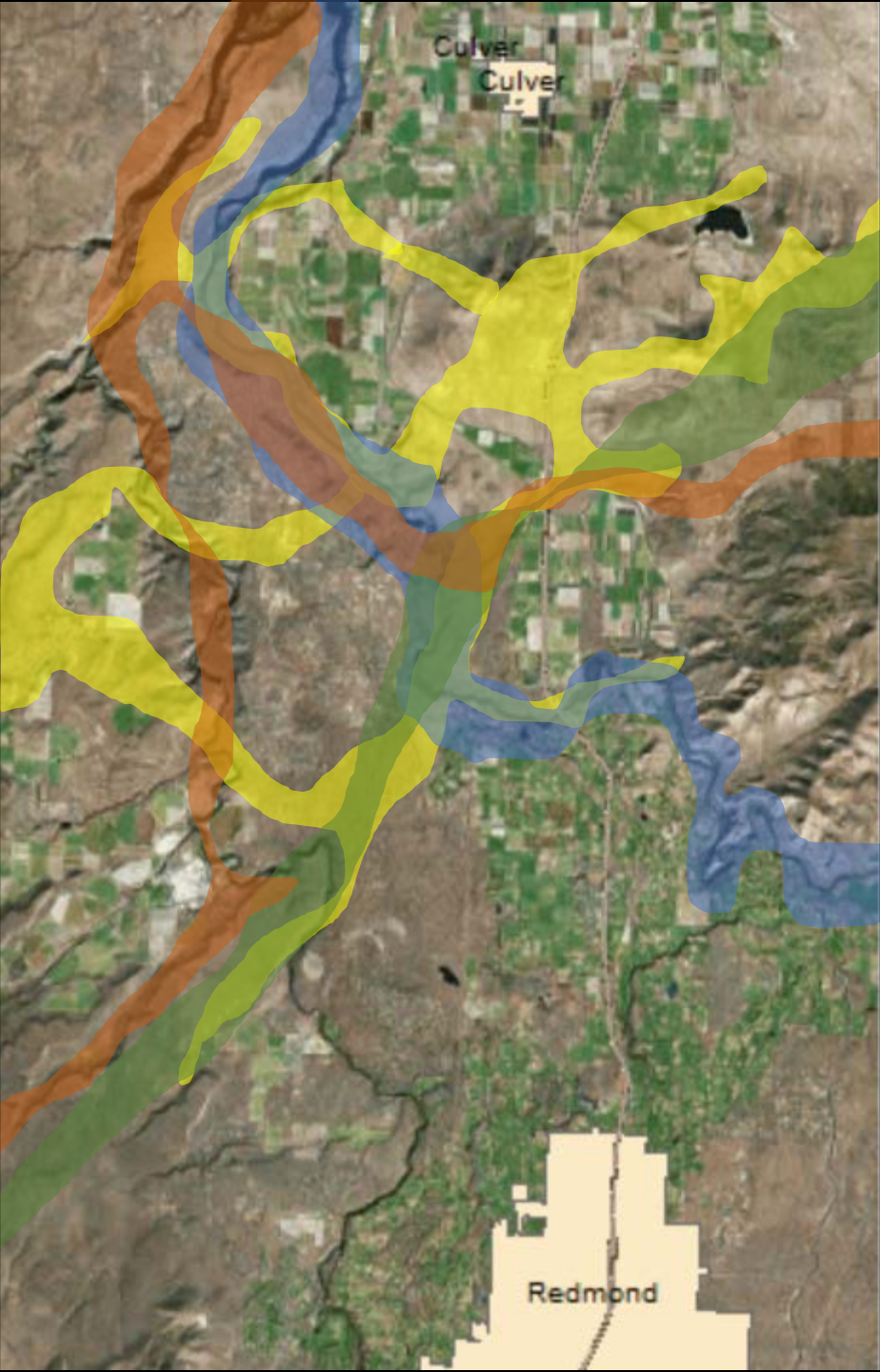
Compositing maps



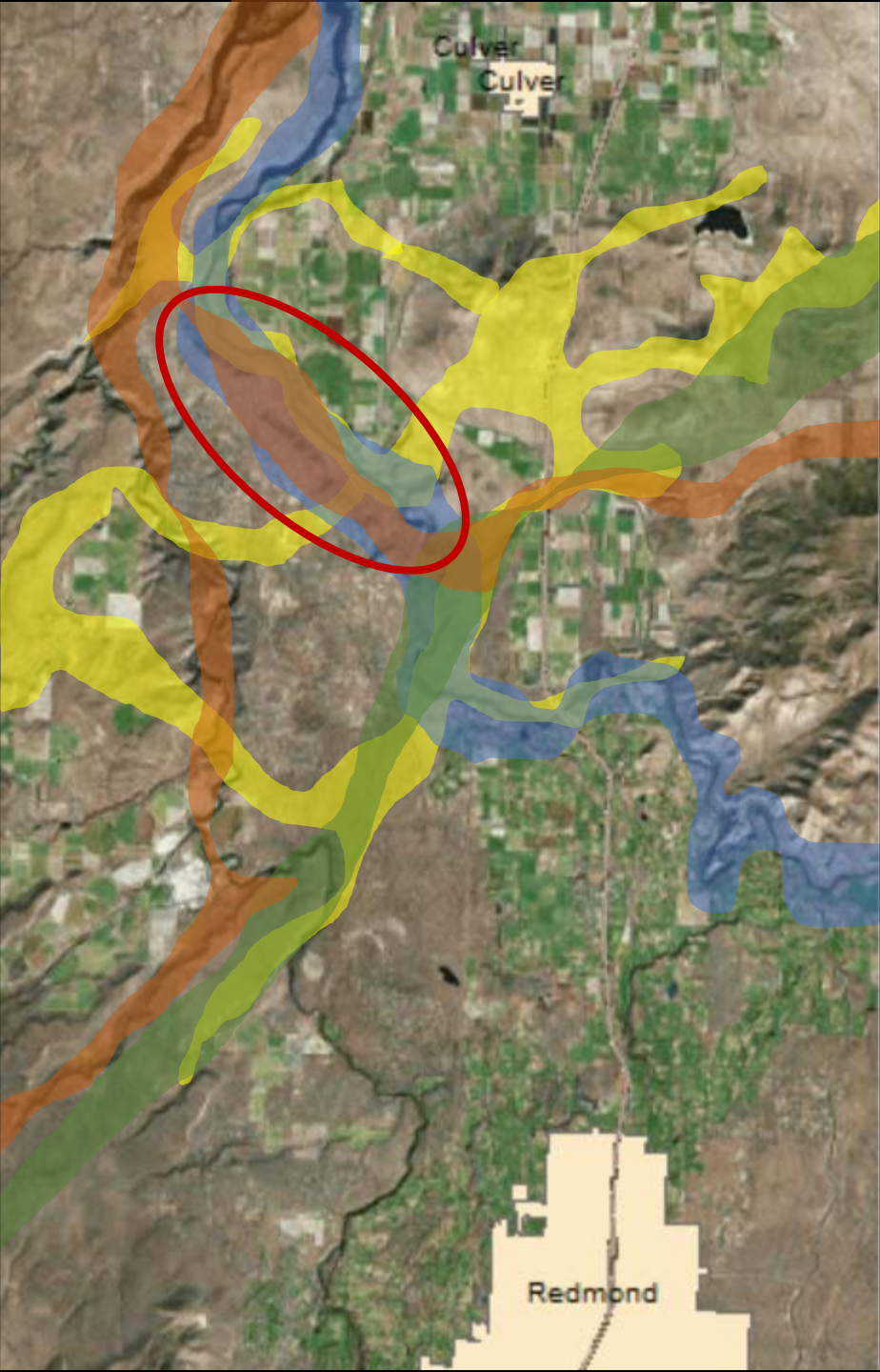
Compositing maps



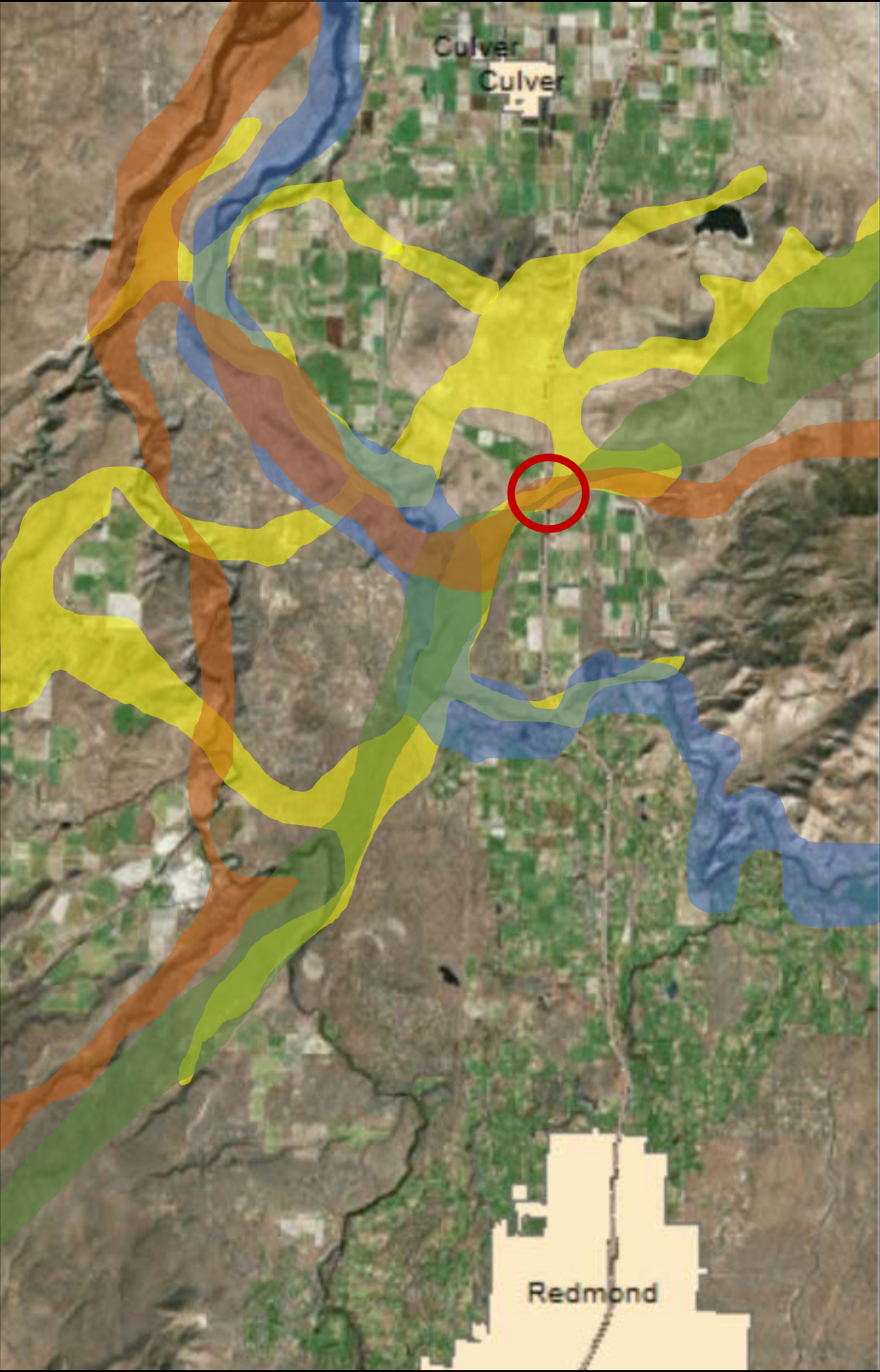
Compositing maps



Prioritization



Prioritization



Outreach and engagement

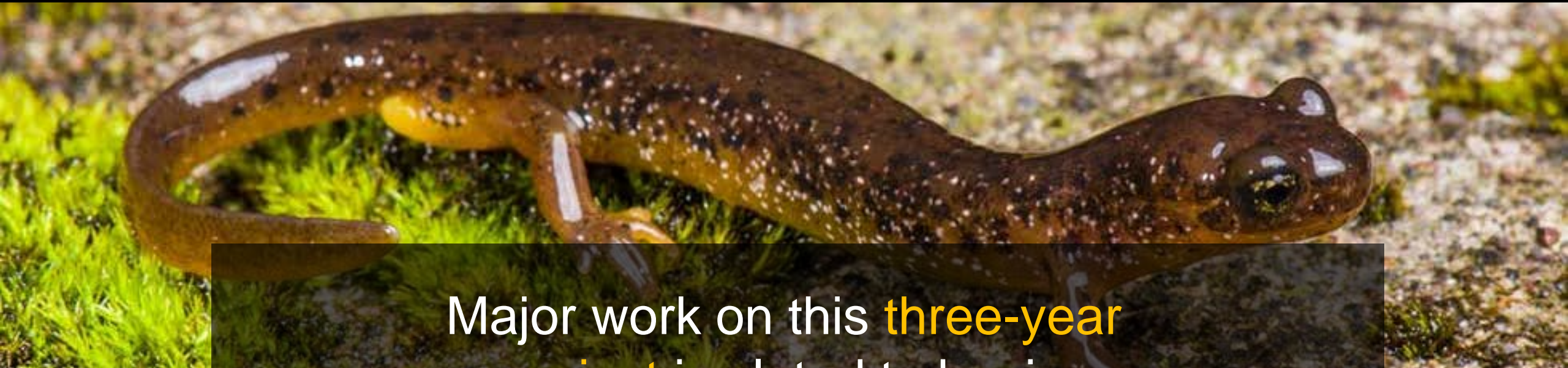


Product distribution

The image shows a screenshot of the COMPASS web application. The interface is divided into several sections:

- Header:** The word "COMPASS" is displayed in large white letters on a dark green background. To the right, there is a search bar labeled "Search the Map" and a magnifying glass icon.
- Navigation:** Below the header, there are tabs for "DATA", "ACTIVE", "TOOLS", and "LEGEND".
- Data Search:** A search box labeled "Search Data" with a magnifying glass icon is located below the tabs.
- Menu:** A vertical list of menu items is on the left side, including "CRUCIAL HABITAT ASSESSMENT", "SEASONAL INTEREST", "STRATEGY CONSERVATION OPPORTUNITY AREAS", "STRATEGY HABITATS", "STRATEGY KEY CONSERVATION ISSUES", and "STRATEGY SPECIES".
- Map:** The main area is a satellite map of Oregon, with the state's outline highlighted in blue. The map shows terrain, water bodies, and some data overlays.
- Map Controls:** On the right side of the map, there are icons for home, search, and a full-screen toggle. At the bottom right, there is a scale bar labeled "MILES" with markings at 0, 150, and 300, and zoom in (+) and zoom out (-) buttons.
- Footer:** The bottom of the page features logos for "COMPASS", "the OREGON CONSERVATION STRATEGY", "OREGON Fish & Wildlife", and "CHAT".

Sources: Esri, i-cubed, USDA, USGS, AEX, GeoEye, Getmapping, Aerogrid, IGN, IGP, UPR-EGP, and others



Major work on this **three-year project** is slated to begin
July 1, 2019
