

Pete Sandrock
7976 SE Grand Ave., Portland OR 97202
petesandrock@comcast.net

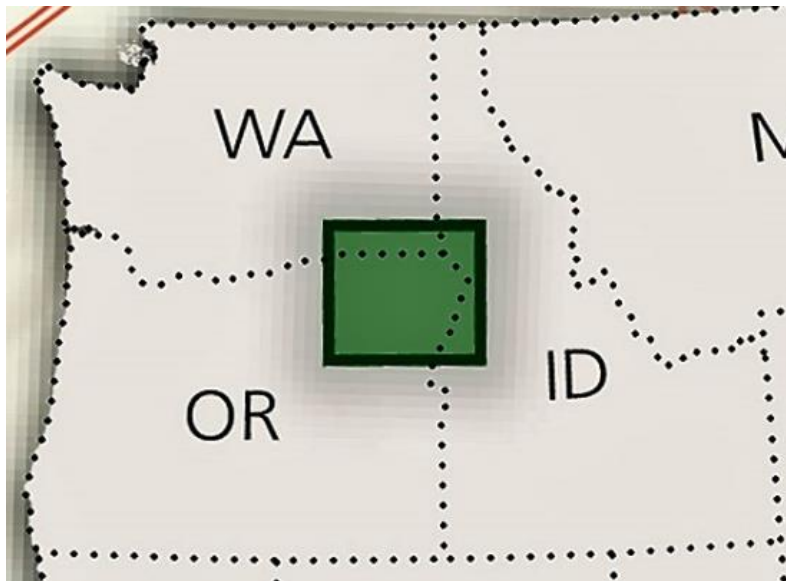
Representative Brad Witt
House Committee on Natural Resources
State Capitol
Salem, OR 97301
Re: HB 2834-1—Wildlife Corridor & Safe Road Crossing Plan

Dear Chair Witt, Vice-Chairs Gorsek and Sprenger, and Members of the Committee:

I support Representative Helms' *Wildlife Corridor & Safe Road Crossing* amendment to HB 2834.

Wildlife corridors, in the abstract, may be hard to visualize. Here's an example of what's possible and practicable based on an analysis by the Greater Hells Canyon Council (GHCC) of the lower Grande Ronde River region of northeast Oregon, southeast Washington, and western Idaho.

Greater Hells Canyon Region

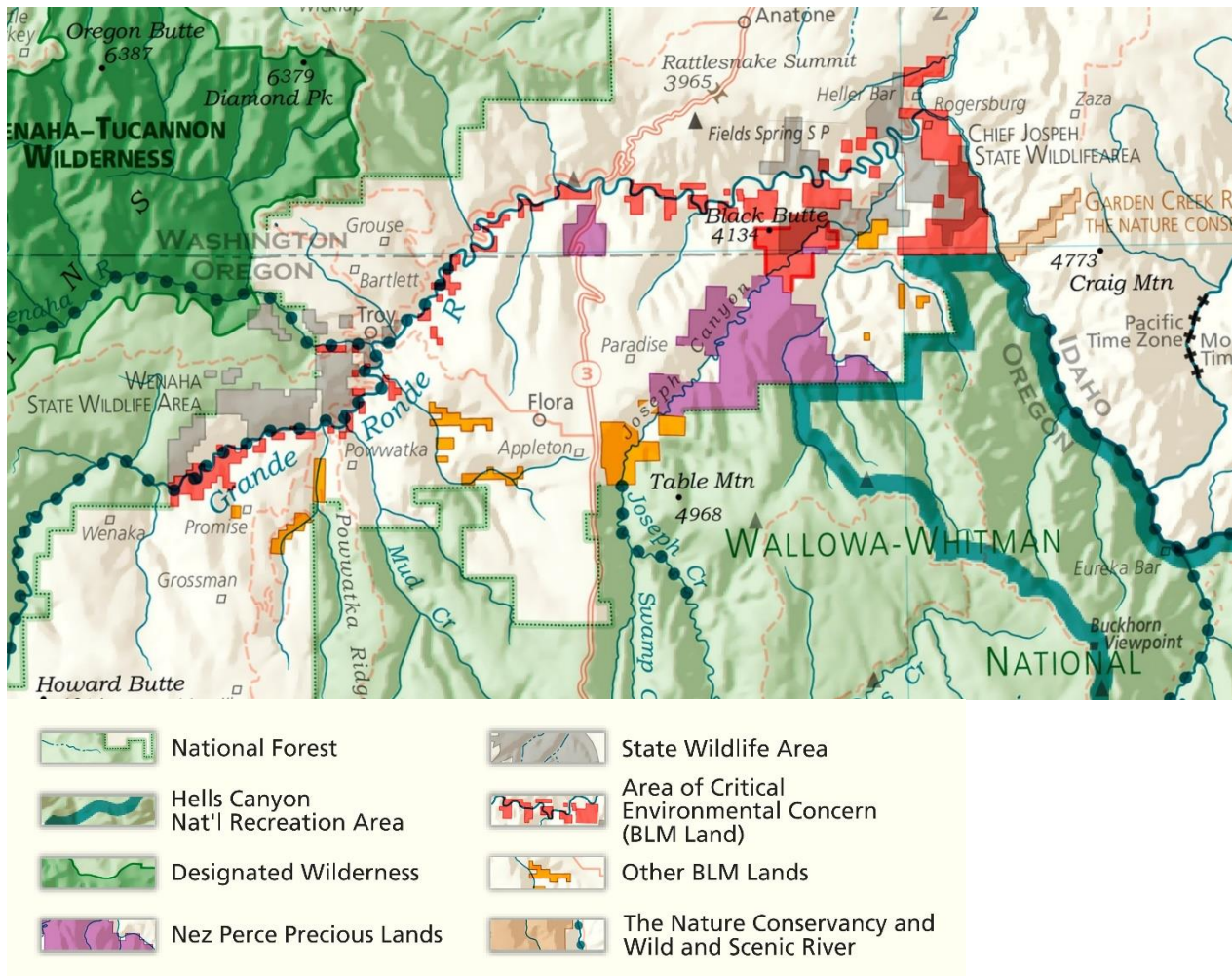


Imus Geographics

Grande Ronde Corridor Concept. The lower 30 miles of the Grande Ronde River could be the backbone of a corridor between two very large protected wildlife habitats: the 275 sq. mi. Wenaha-Tucannon Wilderness in the west and the 1,000 sq. mi. Hells Canyon National Recreation Area (HCNRA) in the east. ODFW's Wenaha Wildlife Area is a critical link in the chain.

Much of the corridor is already in place with ODFW and WDFW wildlife areas, the Nez Perce Precious Lands, a string of BLM Areas of Critical Environmental Concern (ACEC), a Nature Conservancy Preserve, and three national forests. The area is rich with potential collaborators: ranchers interested in conservation easements, tribal nations, federal and state agencies, land trusts, and conservation organizations. ODFW is ideally qualified to coordinate the players.

Grande Ronde Corridor Concept

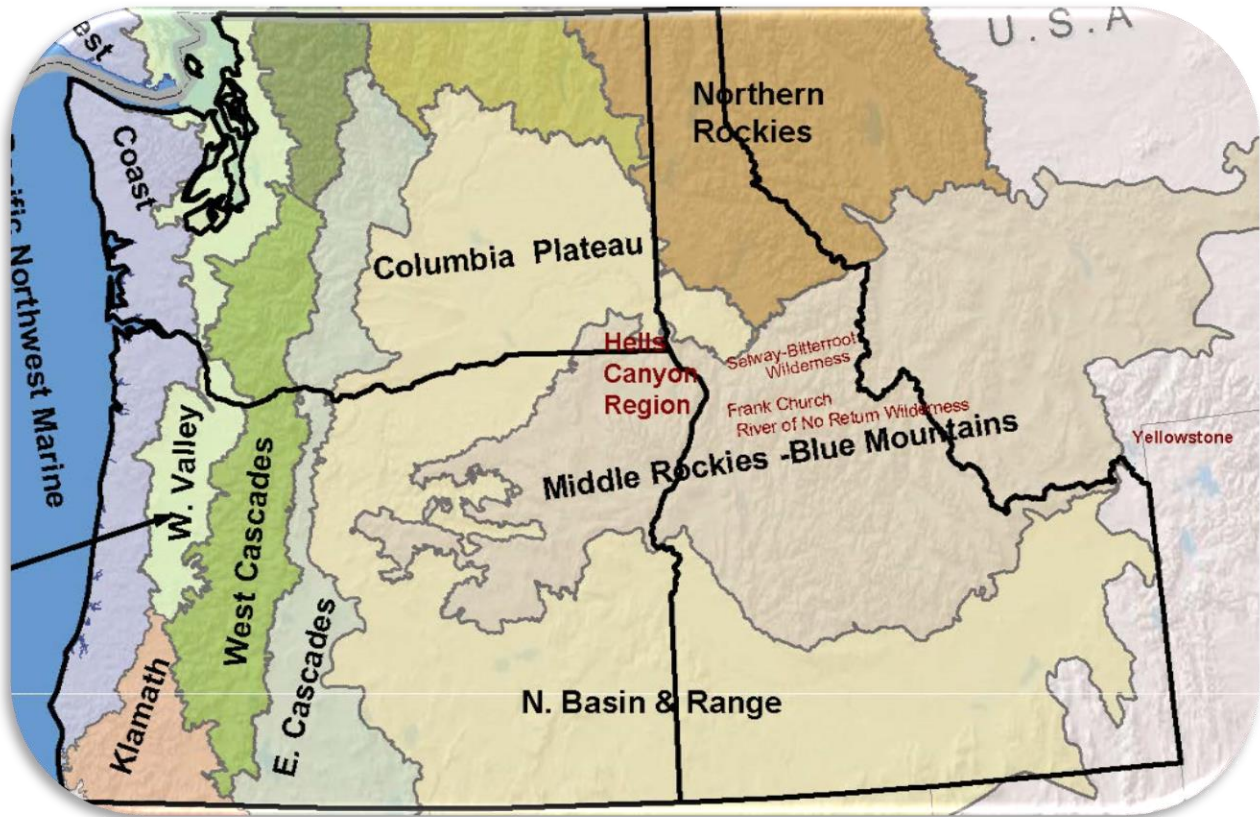


Imus Geographics

The Greater Hells Canyon region is more than just the Grande Ronde Corridor.

It's the hub connecting the West's major ecoregions, home to a unique mix of wildlife. Salmon from the Pacific. Moose from the Rockies. Pronghorns from the Basin & Range.

It's worth remembering, though, what we've already lost. Salmon once swam up the Columbia, into the Snake and Owyhee rivers before spawning in northern Nevada. It was a 700 miles journey.



The Nature Conservancy

Let's act now before surging population and accelerating climate change steal the last vestiges of Oregon's wild heritage.

Respectfully,

Pete Sandrock

cc: Kailey Kornhauser, Analyst for the House Committee on Natural Resources
Greg Mintz, Legislative Director, Office of Representative Ken Helm