



## Support SB 204 & HB 2138- Rural Volunteer EMT Tax Credit

The Oregon Rural Health Association (ORHA) was founded in 1992 to build a stronger voice in Salem for all rural practitioners. Today the ORHA is composed of individuals and organizations dedicated to providing leadership on rural health issues through advocacy, communication and education.

### Who receives the credit?

- An Emergency Medical Responder, EMT Basic, Advanced EMT, EMT-Intermediate or Paramedic, providing some services on a volunteer basis is eligible for the credit.
- About 400 taxpayers collect the credit.

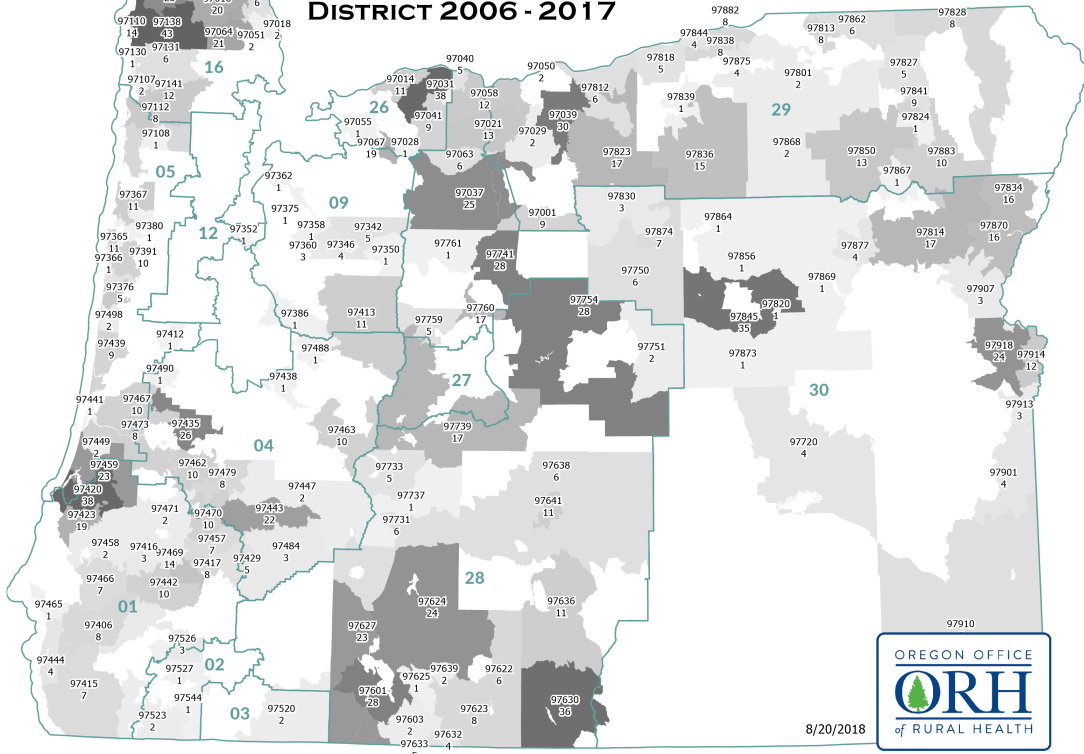
### What is the credit?

- **\$250 tax credit** for eligible providers who:
  - Work 25 miles or further from a population center of 30,000
  - Volunteer more than 20% of their total time as EMT
- Costs the state ~\$200,000 per biennium.

### Why is it important?

- If any of us has an accident while we are traveling in rural Oregon, most likely it is volunteer emergency medical providers who will come to our aide. **These are critical service providers.**
- Volunteers must take time, away from family and other obligations to receive the necessary training.
  - To become an EMT takes about six months going to class two evenings a week and every other Saturday.
  - **It costs over \$2000 for books and testing fees** to become a volunteer.
  - Then they have to do 30 hours of continuing education to maintain their license.
- The \$250 tax credit helps offset some of these costs. **We think it's a small price to pay for the volunteers who help save lives.**

**COUNT OF ALL EMT TAX CREDIT RECIPIENTS  
BY ZIP AND STATE SENATE  
DISTRICT 2006 - 2017**



**COUNT OF ALL EMT TAX CREDIT RECIPIENTS  
BY ZIP AND STATE HOUSE  
DISTRICT 2006 - 2017**

