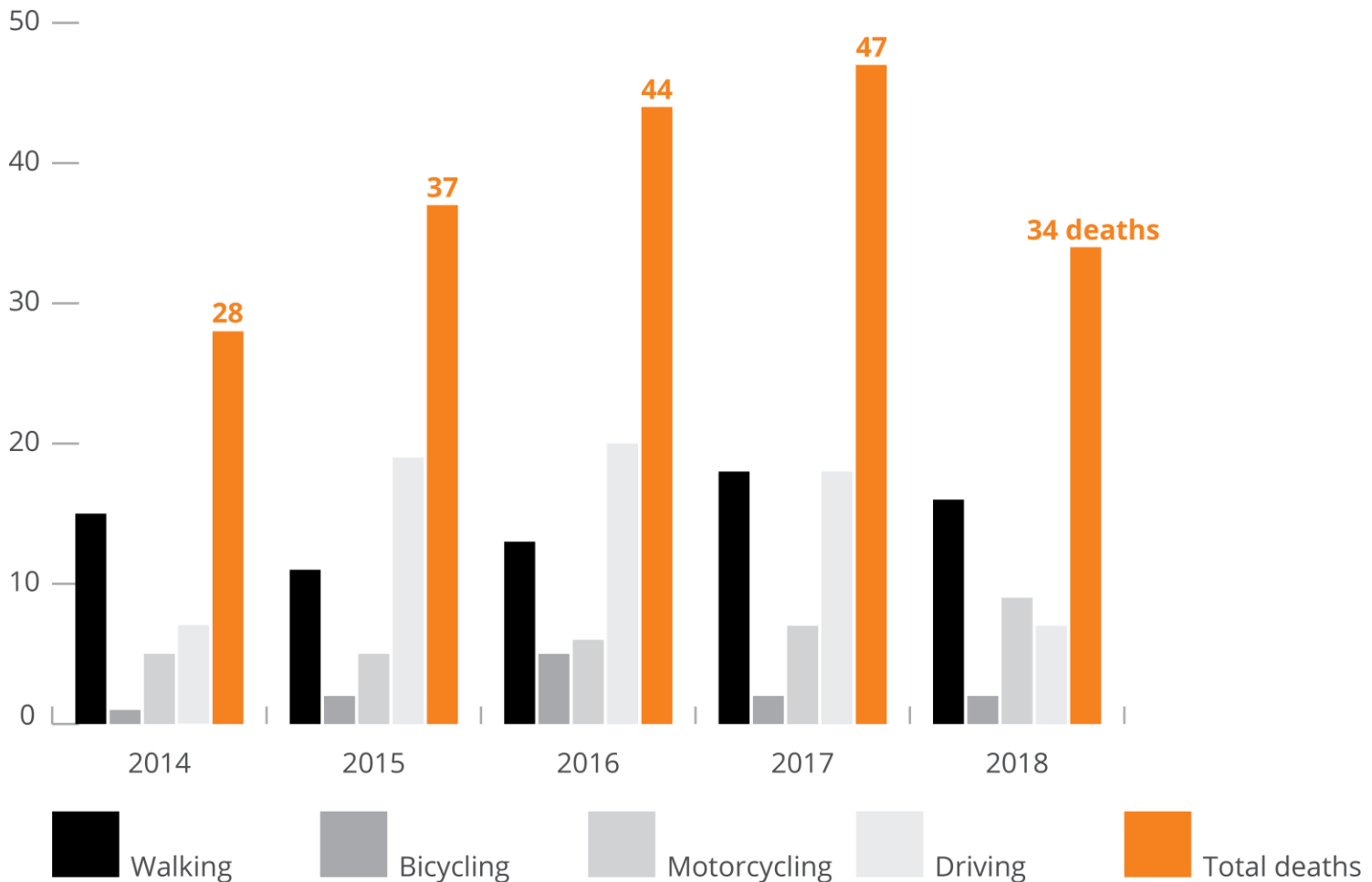
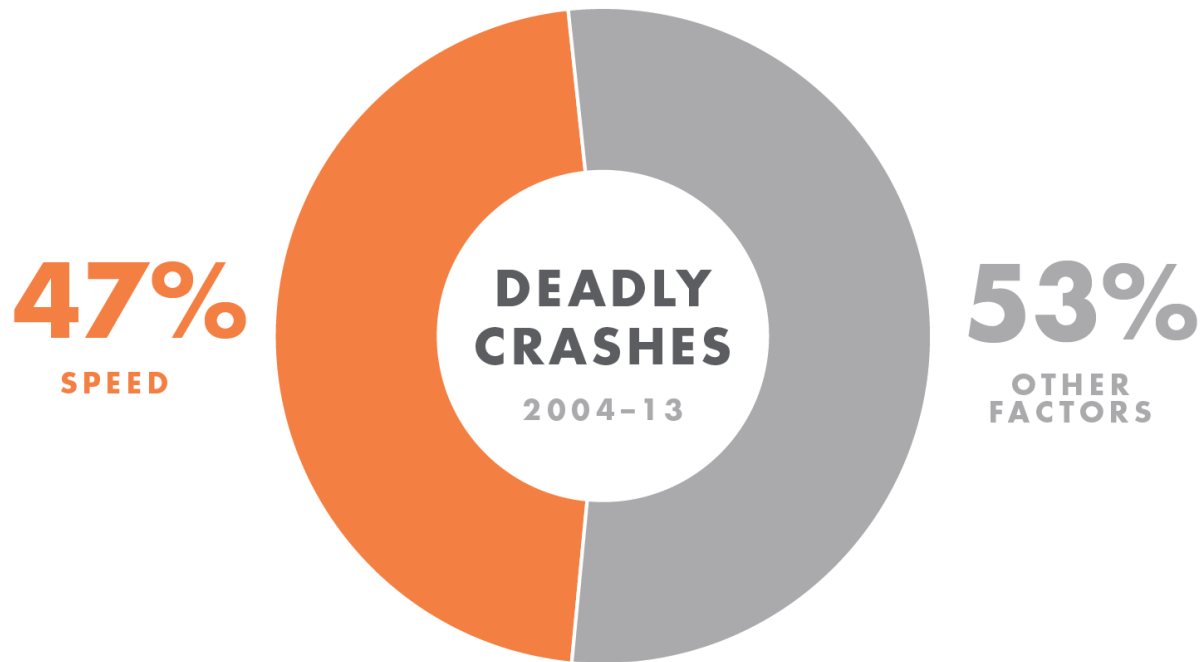


Pedestrians are disproportionately represented in Portland traffic deaths



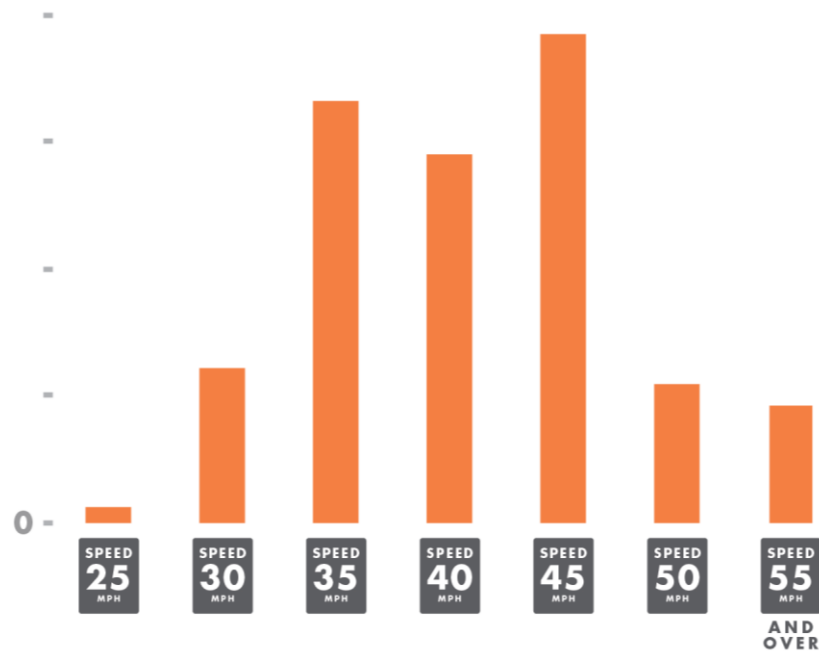
Speed is a factor in nearly half of Portland's fatal crashes



SPEED
DEADLY CRASHES

Streets with 35-45 mph speed limits are Portland's most deadly

1 DEATH -
PER MILE



**TOTAL DEATHS PER ROADWAY MILE
OF POSTED SPEED LIMIT**

Speed limits in urban areas should recognize a range of factors

- High level of pedestrian activity
- Frequent presence of bicycles
- Transit boardings /alightings
- Complex intersections with multiple modes and often-conflicting movements
- Rapidly changing land uses as development intensifies

DEATH AND INJURY DUE TO SPEED



Other states have delegated speed setting authority to local jurisdictions

- Maryland
- Massachusetts
- New York
- North Carolina
- Tennessee
- Virginia
- Washington