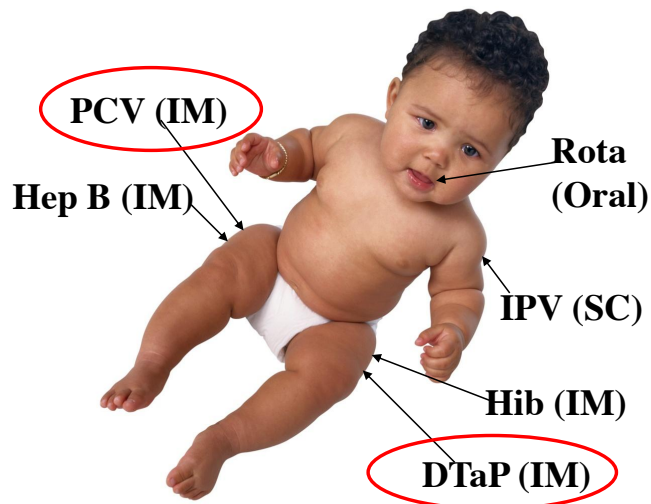


Website- <https://www.cdc.gov/vaccines/hcp/admin/admin-protocols.html>

These are instructions for Healthcare Providers/Professionals. This is on the CDC website. Giving all the doses at once has not been studied.

## Giving All the Doses Under 12 Months

- Needle Lengths:  
IM=1 inch SC=5/8 inch
- IM injections are given in the infant's thigh
- SC injections may be given in the arm or thigh
- Separate injection sites by 1-2 inches
- Using combination vaccines will decrease the number of injections
- May consider a 5/8 inch needle for IM injections **only** in newborns less than age 4 weeks



**Pain Management:**

- Administer vaccines likely to cause a greater local reaction (DTaP, PCV) into separate limbs
- Inject the most painful injections last (i.e., PCV)

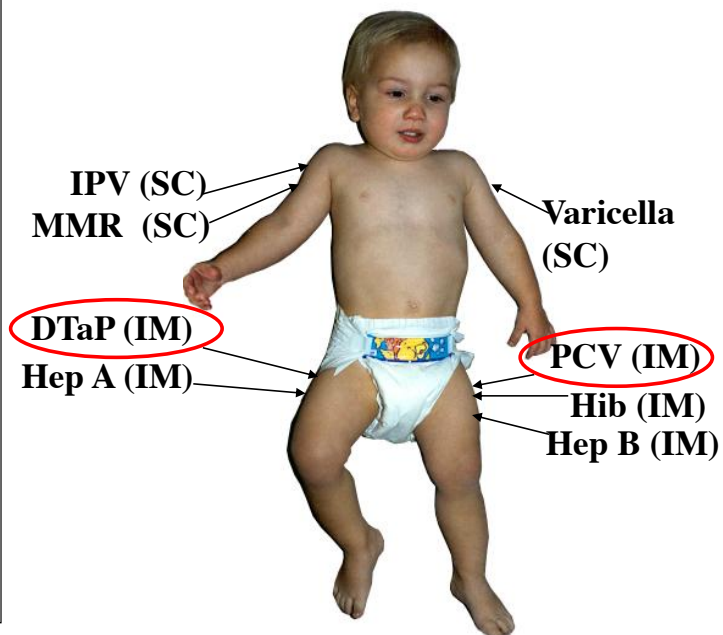
AIM Toolkit - Childhood Section

www.aimtoolkit.org

January 31, 2013

## Giving All the Doses 12 Months and Older

- Needle Lengths:  
IM=1 to 1.5 inches  
SC=5/8 inch
- Anterolateral thigh is the **preferred** site for multiple IM injections and for all toddlers aged 12 months-2 years
- Deltoid is an IM **option** for children aged 12 months-2 years with adequate muscle mass. Deltoid is the preferred site for age 3 years and older
- Separate injection sites by 1-2 inches
- Using **combination vaccines** will decrease the number of injections needed to keep a child up-to-date



**Pain Management:**

- Administer vaccines likely to cause a greater local reaction (DTaP, PCV) into separate limbs
- Inject the most painful injections last (i.e., MMR, PCV)

AIM Toolkit - Childhood Section

www.aimtoolkit.org

January 31, 2013