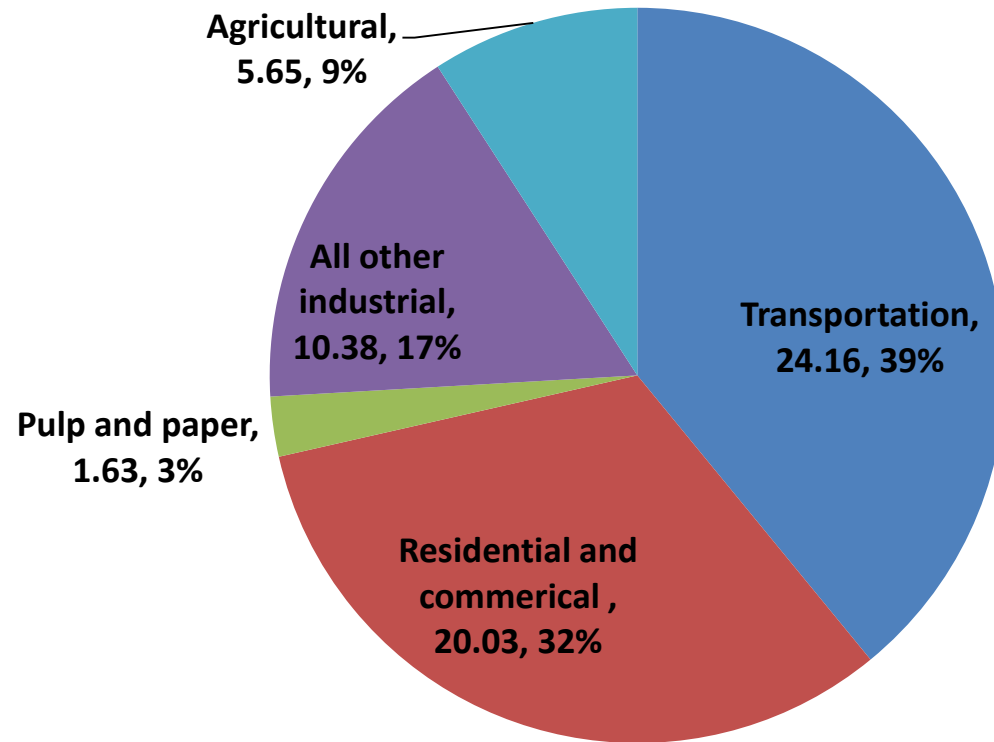


## 2016 Oregon In-boundary GHG Emissions (including emissions from the indirect use of electricity)

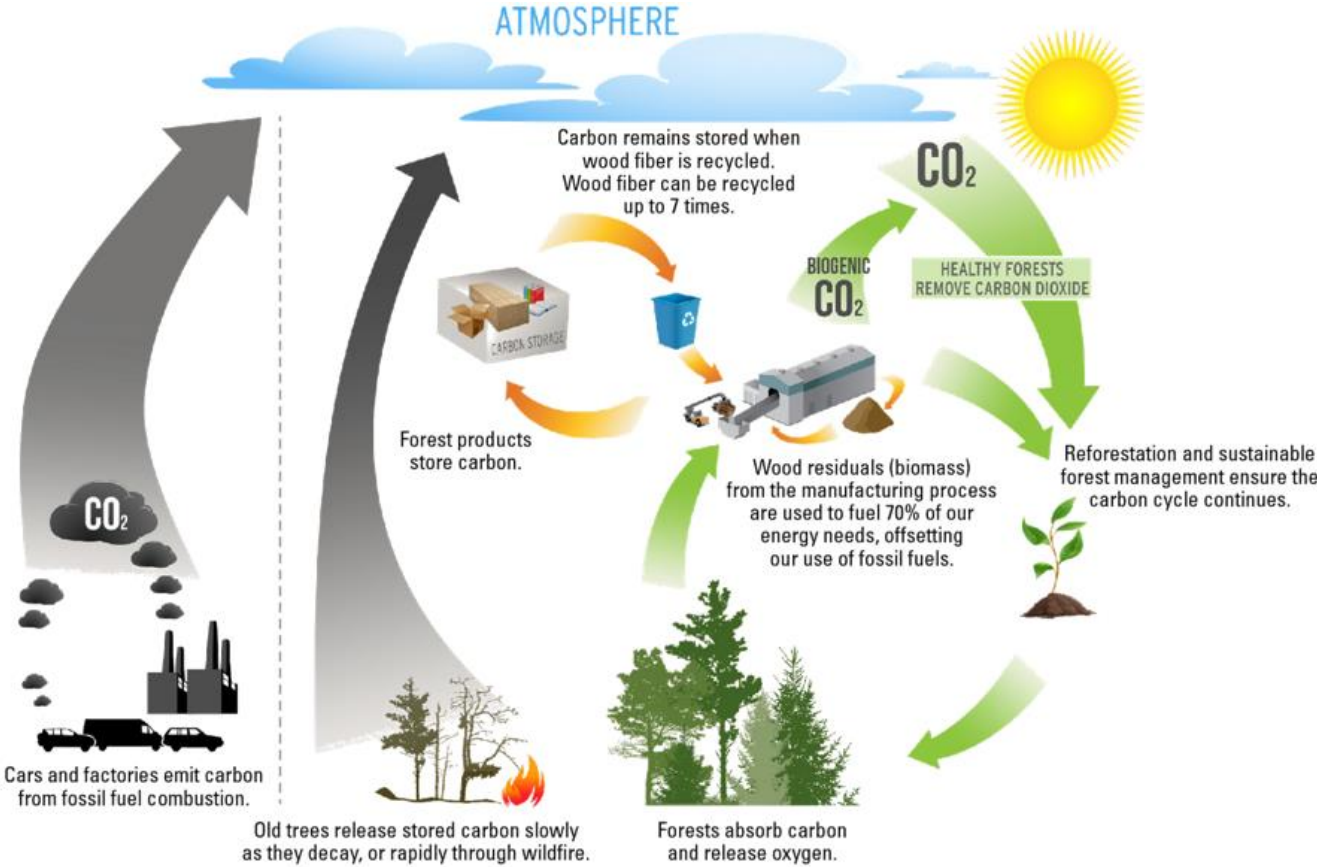


# Renewable Fiber – Carbon Cycle

Pulp and paper mills in Oregon utilize predominantly carbon-neutral, biomass-based CHP to efficiently generate electricity.

63% of onsite fuels used by the Oregon pulp and paper industry for energy generation are biomass.

At Springfield approximately 80% of our on-site fuels used for electrical generation are biomass. Approximately 75% of onsite fuels consumed for all purposes on site are biomass.



Adapted from the 2014 American Forest & Paper Association Sustainable Carbon Cycle infographic.