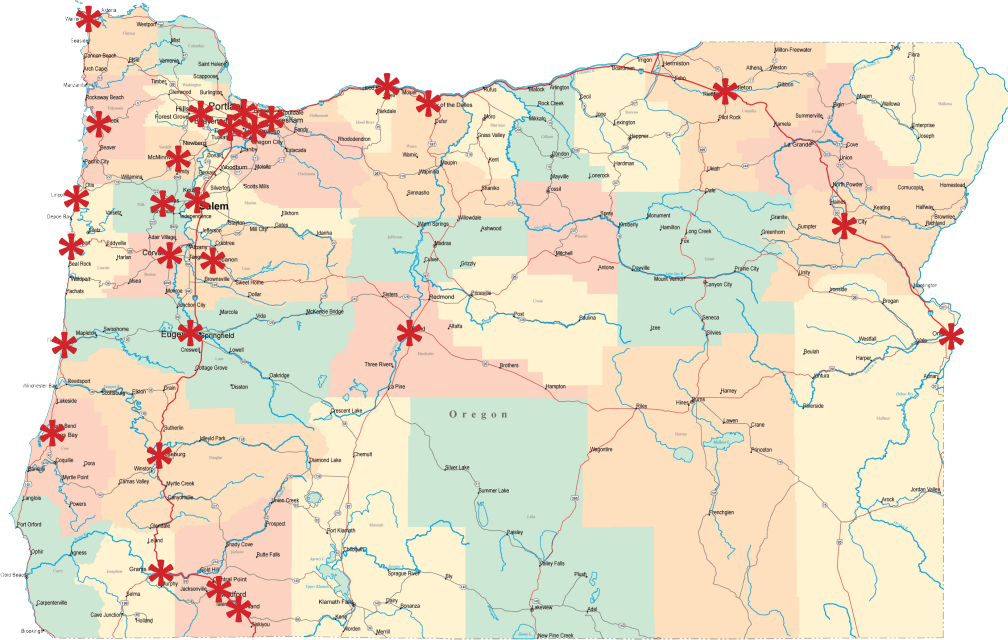


Chances are, someone in **your community** works for a **QRF**



WHAT'S A QRF?



A Qualified Rehabilitation Facility "QRF" is an Oregon nonprofit organization that puts Oregonians with disabilities to work.

QRFs assist the employment choices of persons with disabilities by providing support, accommodations, on the job training and most importantly **jobs!** QRFs partner with Local and State Government to provide employment opportunities for people with disabilities.

The State Procurement Office (SPO) of the Oregon Department of Administrative Services (DAS) oversees the QRF Program. SPO approves each QRF in Oregon and manages the list of those goods and services determined suitable for procurement. The Products of Individuals with Disabilities Law requires Oregon Public Agencies to use their purchasing power for the public good by negotiating directly for purchases with select nonprofits (QRFs).



Alternative Services* - Tigard
Bay Area Rehabilitation* - Coos Bay
Blind Enterprises of Oregon - Portland
Blue Sun - Corvallis
Cornerstone Associates* - Corvallis
DePaul Industries - Portland
Diversified Abilities - Clackamas
Eastco Diversified Services* - Gresham
Galt Foundation* - Salem
Garten Services* - Salem, Dallas
Integrated Supports for Living* - Salem

Laurel Hill Center - Eugene
Living Opportunities* - Medford
Marie Mills Center* - Tillamook
MV Advancements* - McMinnville
Northwest Community Alliance* - Warrenton
Opportunity Connections - The Dalles, Hood River
Pathway Enterprises* - Ashland, Bend
Pearl Buck Center* - Eugene
Relay Resources - Portland, Pendleton
Rockwest Training Company - Salem

Shangri-la Corp* - Salem, Newport, Florence
Southern Oregon Aspire* - Grants Pass
Step Forward Activities* - Baker City
Sunrise Enterprises* - Roseburg
TVW* - Hillsboro
Western Idaho Training Company* - Ontario
Willamette Valley Rehabilitation Center - Lebanon
Work Unlimited - Corvallis

**ORA Member*

What is the Products of Individuals with Disabilities Law?

Passed unanimously by both the Oregon House and Senate in 1977, the Products of Individuals with Disabilities law is a tool to "encourage and assist individuals with disabilities to achieve maximum personal independence" (ORS 279.840). Through contracts with public agencies, QRF jobs increase the dignity and capacity for self support of Oregonians that want and deserve a paycheck but benefit from the unique supports and accommodations that a QRF provides.

To promote the employment of people with disabilities, the law empowers Oregon Public Agencies to negotiate directly for normal business purchases with QRFs. DAS determines the price and which goods and services are suitable for purchase through the law. The result leverages the purchasing power of Public Agencies to do public good.



Our Mission: ORA is the statewide network that represents, supports and advocates for our members as they provide services for individuals with intellectual, developmental or other disabilities to lead full and inclusive lives.

2405 Front Street NE, Suite 150, Salem, OR 97301 || 503-585-3337



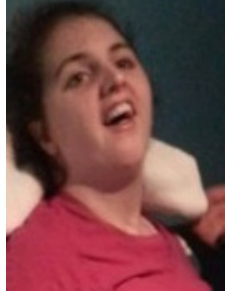
QRF

Qualified Rehabilitation Facility

FACTS:

▶ Gayle

Gayle lived a productive life as a hospital staff member until the day of her accident. She received a severe Brain Trauma requiring her to re-learn how to use her hands and walk again. This life altering tragedy left her with blinding headaches and increased sensitivity to light and sound. She has frequent episodes that require her to rest in order to recover. After her accident, Gayle's husband passed away and she was faced with caring for herself and her children. She was able to find work, help, and support through a QRF program contract via Pathway Enterprises, Inc. She is allowed the breaks she needs and is assigned work that does not agitate her sensitivities. Gayle does not drive. She walks 3 miles to and from work every day. On days with warmer or colder weather, a ride is provided at no cost so she can earn a living. This program allows her a quality of life she couldn't obtain otherwise.



▶ John

Diagnosed with a severe learning disability, John has faced hurdles his entire life. Work not only brings him income but also a sense of self-worth and purpose. John's training time is longer than most and his work pace slower. Community employers were uninterested in his talents and he did not qualify for long term on-the-job supports. Through the QRF program, John has retained employment, receives specialized supervision, and is able to be a contributing part of his community.



Employees with disabilities spent **2.75 million hours working** on behalf of Oregon public agencies last year.



▶ Dan

Is a young man who has suffered barriers to employment due to symptoms from a diagnosis of Autism. This diagnosis affected his ability to learn, socialize, communicate and relate to others. He was unsuccessful in finding work in the community and has not been able to qualify for any supports because of an average IQ. His family worked tirelessly to find some hope for Dan and feared for his future. Once Dan found Pathway Enterprises and the QRF program his life changed. Dan works full time and receives company benefits. Pathway provides specialized supervision and work accommodations to ensure that Dan is successful. Because of the QRF program, Dan and his family do not worry about his future.

▶ Glenn

A Veteran of the U.S. Army, Glenn suffered a traumatic brain injury that changed his life. His work tolerance after the injury limited him to 4 or 5 hours per day at most. The array of symptoms he suffers from include depression, headaches, anxiety and fatigue. Given these symptoms he was unable to procure and retain a job in the community. Glenn finally found stability through the State Use program via Pathway Enterprises, Inc., where he works part time. Glenn receives appropriate and therapeutic accommodations that help to enhance his dignity and self-worth.

▶ QRF Products and Services

- Bookbinding
- Bridge Tending
- Bus and Shelter Cleaning
- Catering
- Confidential Record Destruction
- Document Storage/Management
- Dog Waste Disposal Bags and Dispensers
- E-Waste Recycling
- Embroidery
- Indoor Plant Maintenance
- First Aid Kits
- Floor Care
- Grounds Maintenance
- Janitorial Services
- Laundry Services
- Liquid Soaps and Dispensers
- Mail Services
- Name Plate/Sign Engraving
- Order Fulfillment
- Painting
- Prescription Eyeglasses
- Printing Services
- Recycling
- Road Traffic Control (Flagging)
- Safety Vests and School Flags
- Security Services
- Silk Screening
- Technology Systems Support Services
- Temporary Staffing Services
- Textile Manufacturing
- Trash Can Liners and Highway Refuse Bags
- Wall Repair

For every dollar spent purchasing QRF goods and services, **over 1/3 is returned** in reduced public aid or income and payroll taxes paid.

Over 3,250 individuals from a vast **array of disabilities** make up the QRF workforce.



Over 90% of QRF contract workers earn **above minimum wage.** Their compensation often includes **insurance benefits** and **paid leave.**



Most QRF workers don't receive **long-term employment supports** and rely solely on **special work accommodations** provided by the QRF.

Prior to QRF employment, the **majority** of individuals with disabilities have been **unemployed for at least a year.**



**The pictures used here are for representation only*