



# Agency Request Budget Presentation

Joint Committee on W&M  
Subcommittee on Public Safety

February 11, 2019



## **Mission Statement and Statutory Authority**

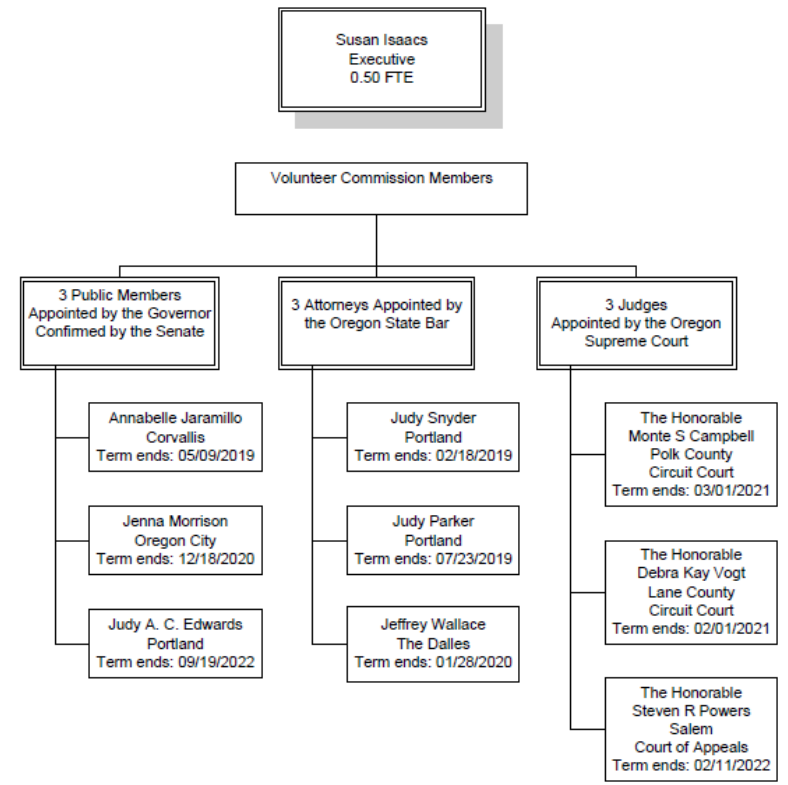
*The mission of the Commission is to ensure the quality and effectiveness of the state judicial system.*

- Statutory authority under ORS 1.410 to ORS 1.480.
- Acts upon complaints of judicial misconduct and disability
- Jurisdiction over Oregon's:
  - 32 Justices of the Peace
  - 20 Appellate Court Judges
  - 53 Plan B Senior Judges
  - 175 Circuit Court Judges
  - Tax Court
  - Pro Tem Judges
- No jurisdiction over municipal court judges, arbitrators or administrative law judges



## Commission Organization

- One half-time Executive Director - in position since 2000
- Volunteer Commission Members
  - Three Public Members
  - Three Bar Members
  - Three Judges





## Operations

### Annual Complaints

- 2012: 163 new complaints
- 2013: 107 new complaints
- 2014: 128 new complaints
- 2015: 108 new complaints
- 2016: 131 new complaints
- 2017: 118 new complaints
- *2018: 147 new complaints*

### Bi-monthly Commission meetings

- Assess merit of complaints
- Assign contracted investigators and possible prosecutor if merit is found

Commission holds hearings and makes finding of fact, conclusions of law and recommendations to the Supreme Court

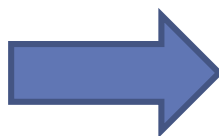


# Commission on Judicial Fitness and Disability

The Commission exists to ensure that Oregon's judges uphold the ethical standards of the Code of Judicial Conduct and Oregon Constitution

## Commission Role

- Investigates complaints
- Conducts hearing if required
- Prepares record
- Makes recommendation



## Supreme Court Role

- Authority to discipline





## Commission on Judicial Fitness and Disability

Budget for the Commission is split into two components:

Operations – Personal Services for ½ - time Director position  
Services and Supplies

Extraordinary Expenses – Costs to investigate and when required  
prosecute apparent violation of Code  
of Judicial Conduct



## Expenses for the Commission are severely impacted by investigations and prosecutions

2017-19 Bie (Dec) – Operations	\$ 164,603
Extraordinary Expenses	\$ 20,713
2015-17 Biennium – Operations	\$ 216,134
Extraordinary Expenses	\$ 218,564
2013-15 Biennium – Operations	\$ 184,805
Extraordinary Expenses	\$ 20,839
2011-13 Biennium – Operations	\$ 161,726
Extraordinary Expenses	\$ 3,000

**19-21 LAB**  
**OPS \$228,295**  
**EXT \$ 24,414**



## **Budget Overview - CSL**

Total CSL for 2019-21 \$258,880

Operations \$239,889

Extraordinary Expenses \$18,991





## **Budget Overview - CSL**

### **Operations**

- **Personal Services \$176,429**
- **Services & Supplies \$63,460**
  - SGSC \$20,225
  - Rent \$17,806
  - Remaining budget \$25,429 for Commission general expenses



## **Budget Overview - ARB**

- ARB \$306,701
- Policy Option Packages to address workload:
  - POP 101 – Administrative Support for Commission
    - Would fund approximately 20 hours a month admin help
    - \$12,600
  - POP 102 – FTE Increase for Executive Director Position
    - Move Director position from .5 FTE to .625 FTE
    - \$35,221