

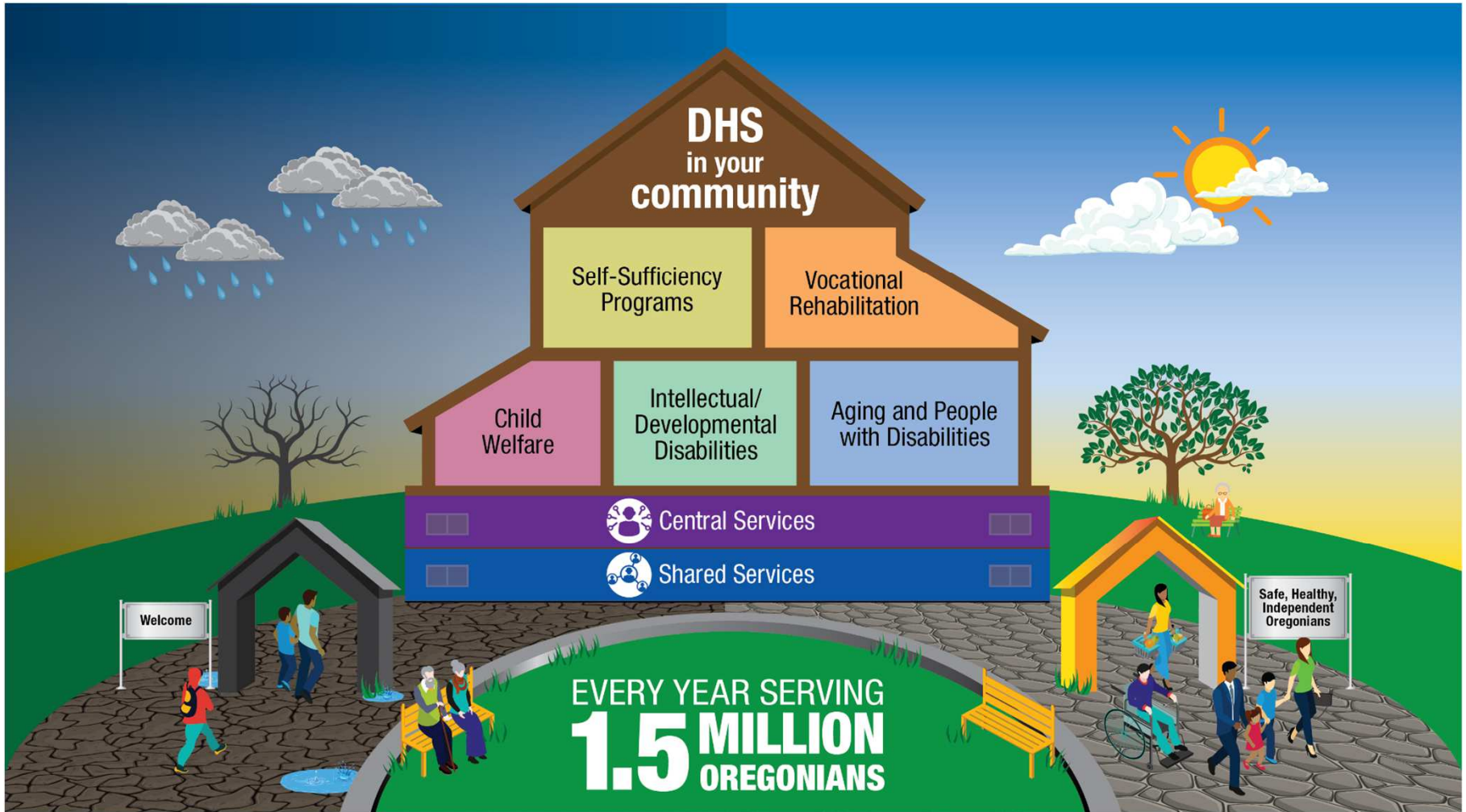
Presentation to the
Senate Committee on Human Services

Oregon Department of Human Services Overview

Fariborz Pakseresht, Director
Liesl Wendt, Deputy Director

February 5, 2019

DHS DIRECTOR'S OFFICE



DHS DIRECTOR'S OFFICE

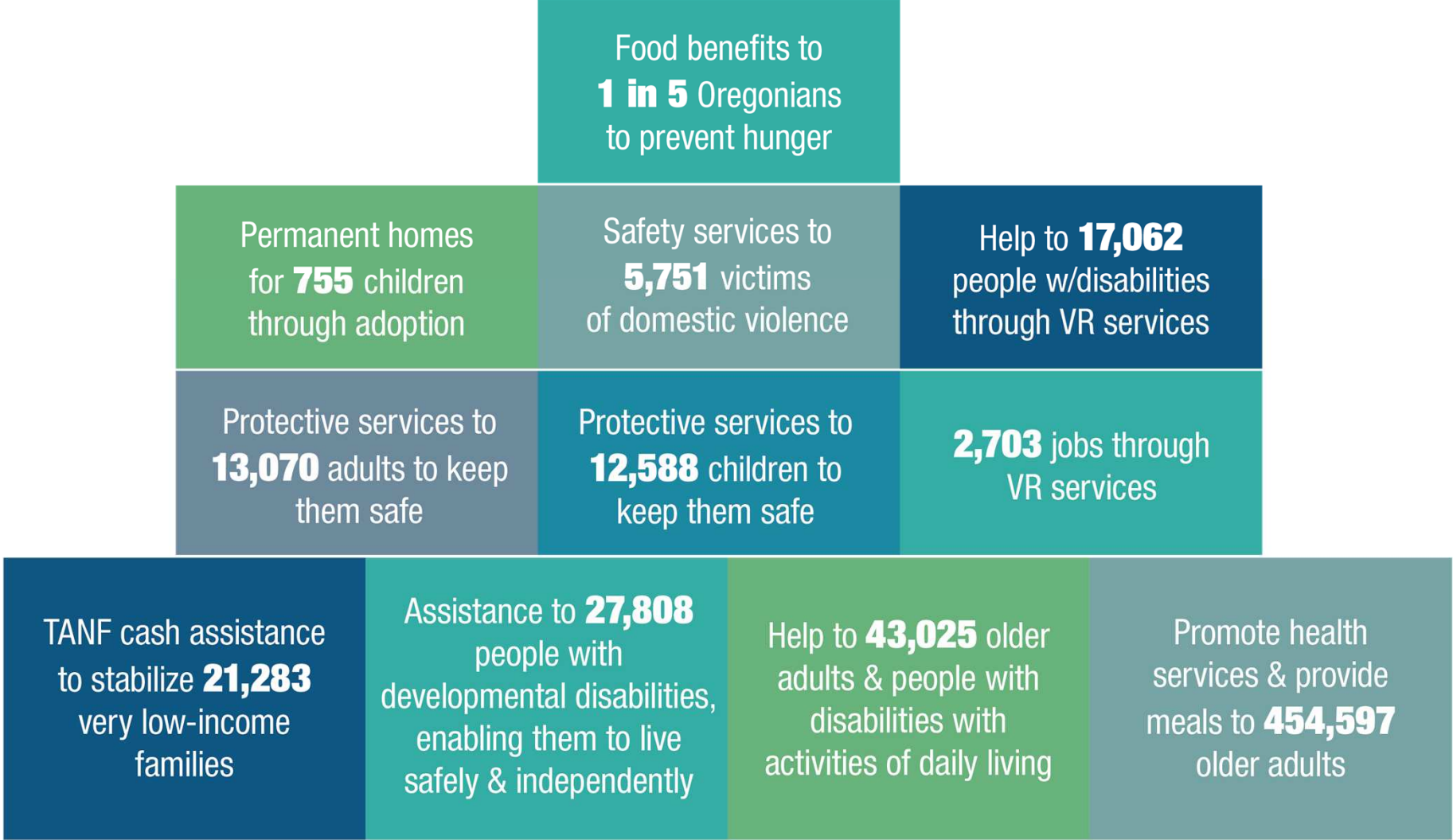


DHS DIRECTOR'S OFFICE

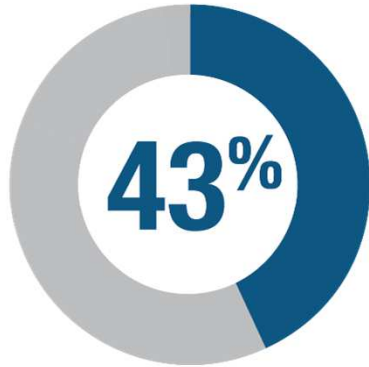
DHS serves Oregonians across the lifespan



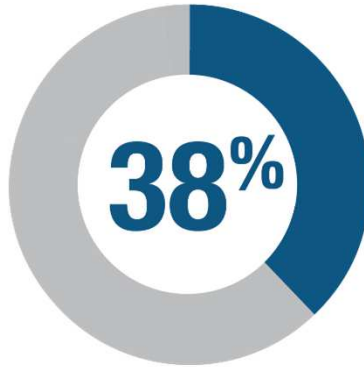
DHS DIRECTOR'S OFFICE



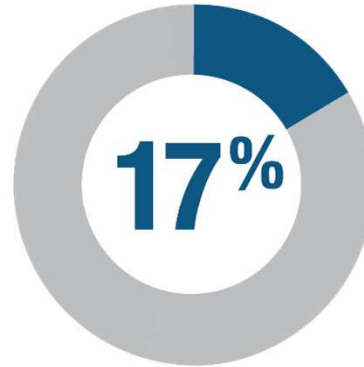
Most receive multiple services



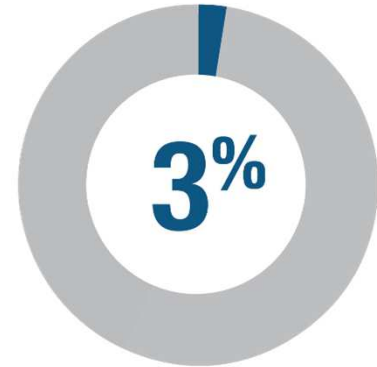
Receive one service



Receive two services



Receive three services



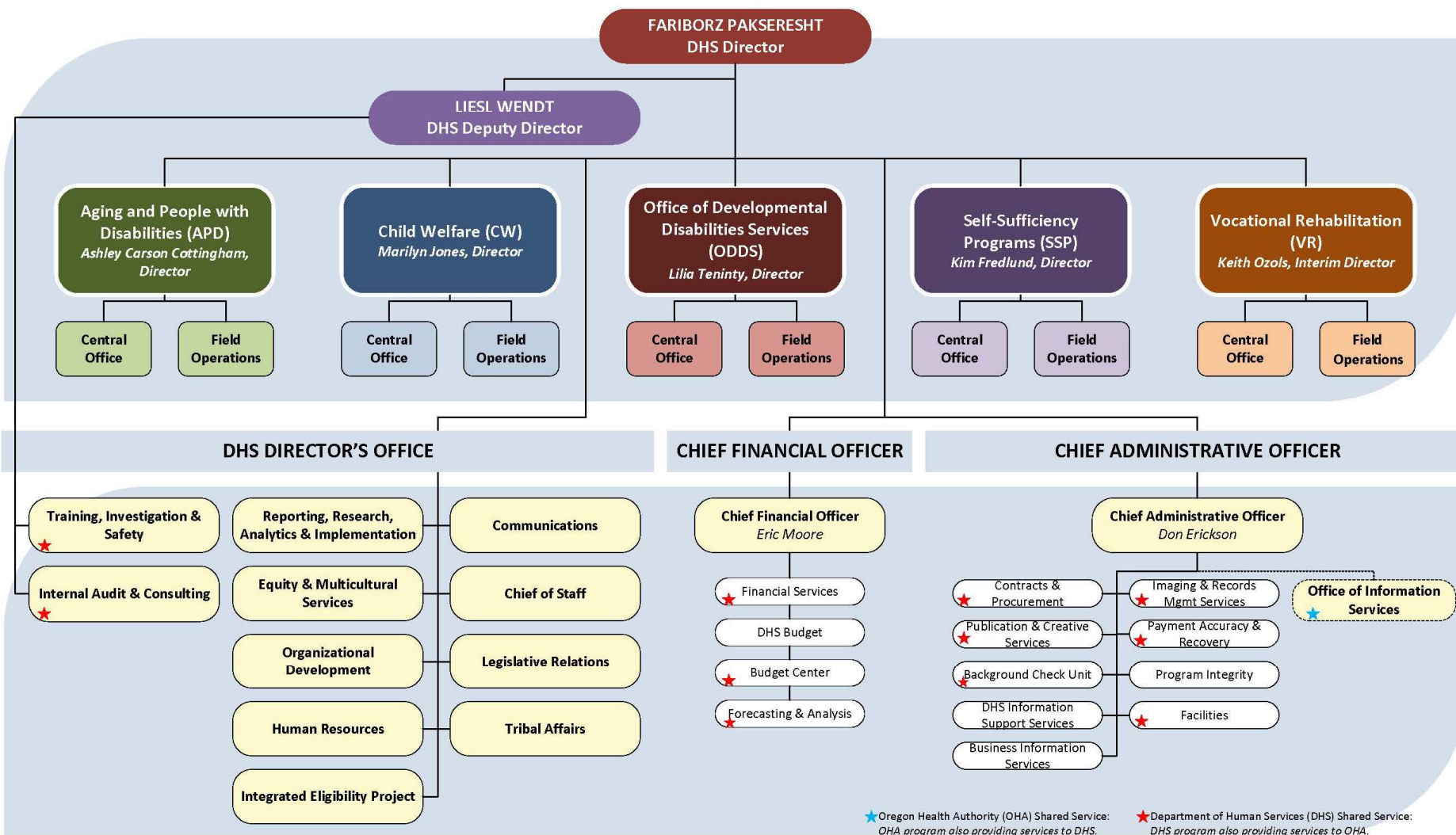
Receive four or more

Medicaid (Oregon Health Plan)
Supplemental Nutrition Assistance Program
Services for older adults and people with physical disabilities
Temporary Assistance to Needy Families

Services for people with intellectual/developmental disabilities
Employment Related Day Care
Vocational Rehabilitation
Support services for families involved with Child Welfare

OREGON DEPARTMENT OF HUMAN SERVICES - Organizational Structure

LAST UPDATED 02/04/2019



DHS DIRECTOR'S OFFICE

\$623 Million

5%

Other Funds

\$3.8 Billion

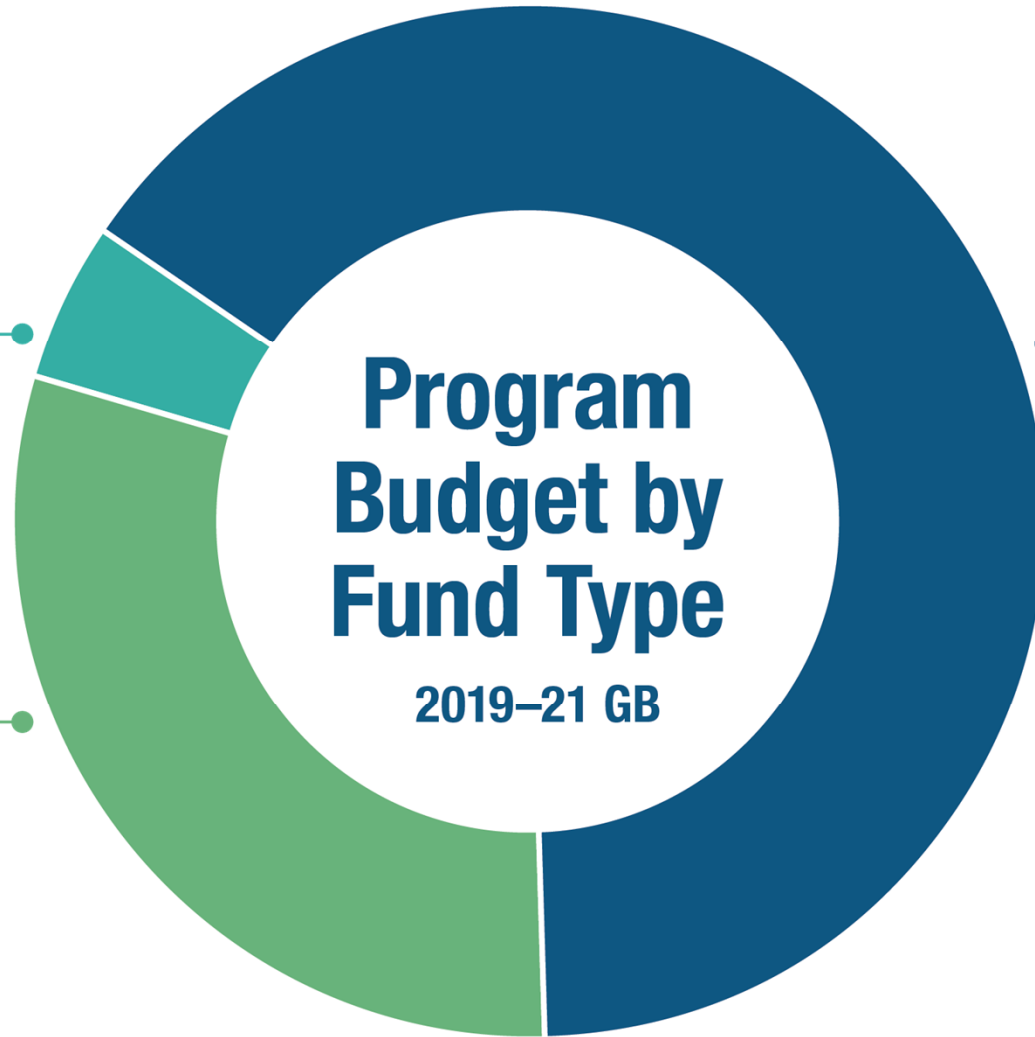
30%

General Funds

\$8.1 Billion

65%

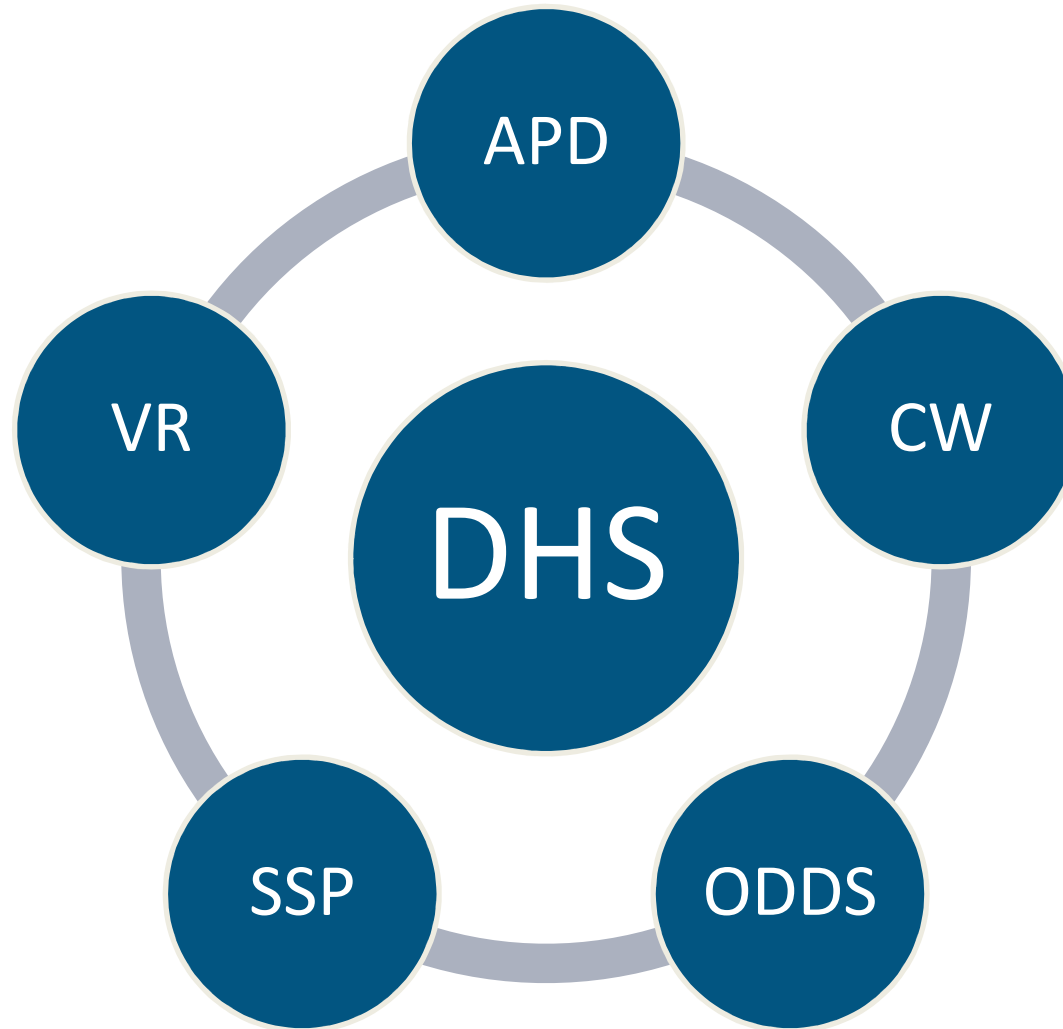
Federal Funds



Program Budget by Fund Type

2019-21 GB

Program overviews



DHS DIRECTOR'S OFFICE

Office of Developmental Disabilities Services (ODDS)

Lilia Teninty, Director

Anna Lansky, Deputy Director

ODDS, stakeholders and the developmental disabilities community come together to provide services, supports, and advocacy to empower Oregonians with intellectual and developmental disabilities to live full lives in their communities.



DHS DIRECTOR'S OFFICE

Office of Developmental Disabilities Services Goals

- Create a sustainable system with effective communication and equitable access
- Honor and support people to make their own choices
- Support opportunities for living and working in the community
- Provide families the supports needed to raise their children at home or another home within the community
- Support people to live rich, full lives while providing for their health and safety

Accessing I/DD Services



Community Developmental Disabilities Programs (CDDPs) determine eligibility

The Eligibility Specialist in a person's CDDP will help with the necessary paperwork and guide a person through the process.

There are 33 CDDPs covering every county in Oregon.

DHS DIRECTOR'S OFFICE

Office of Developmental Disabilities Services

Community

Developmental Disabilities Programs (CDDPs)

- Adult Abuse investigations

CDDPs and Brokerages

- Case Management
- Adult Protective Services
- Individual Support Planning

Services

- In-home services
- Employment services
- Group Home
- IDD Foster care
- Behavioral Support Services
- Stabilization and Crisis Unit

Vocational Rehabilitation (VR)

Keith Ozols, Interim Director

Pete Karpa, Deputy Director

Assist Oregonians with disabilities to achieve, maintain and advance in employment and independence.



DHS DIRECTOR'S OFFICE

Vocational Rehabilitation Goals

- Continue program development that responds proactively to federal and state requirements under the Workforce Innovation and Opportunity Act
- Implement a statewide transition service program for students with disabilities
- Create and implement an Employer Engagement Model
- Increase program policy alignment and consistent application

Vocational Rehabilitation Services

- Pre-employment Transition Services
- Youth Transition Program
- Basic VR Services
- Supported Employment
- Independent Living
- Services for employers

Aging & People with Disabilities (APD)

Ashley Carson Cottingham, Director

Mike McCormick, Deputy Director

Oregon's older adults, people with disabilities and their families experience person-centered services, supports and early interventions that are innovative and help maintain independence, promote safety, wellbeing, honor choice, respect cultural preferences and uphold dignity.



DHS DIRECTOR'S OFFICE

Aging & People with Disabilities Goals

Well Being: Older adults and people with disabilities feel safe and experience their best quality of life.

Accessibility: Oregonians can readily and consistently access services and supports to meet their needs.

Quality Outcomes: Oregonians engage in services and supports that are preventive, evidence-informed, and lead to quality outcomes.

Service Equity: Oregonians experience programs, services and supports that are designed, improved and responsive to historical inequities, current disparities, and individual experiences.

Engagement: Consumers are empowered by information, communication and advocacy through strong, collaborative partnerships with stakeholders and rich community dialogue.

Aging & People with Disabilities Services

- Medicaid Long-term Care
- Aging and Disability Resource Connection (ADRC)
- Adult Protective Services
- Facility Licensing
- Older Americans Act
- Oregon Project Independence
- Medicaid and Financial Eligibility
- General Assistance Program
- Disability Determination Services
- Deaf and Hard of Hearing Services

DHS DIRECTOR'S OFFICE

Self-Sufficiency Programs (SSP)

Kim Fredlund, Director

Dan Haun, Deputy Director

Self-Sufficiency Programs provide a safety net, family stability and a connection to careers aimed at reducing poverty in Oregon and stopping the cycle of poverty for the next generation.



DHS DIRECTOR'S OFFICE

Self-Sufficiency Programs Goals

- Person-centered opportunities for long lasting well-being for children and adults
- Reliable, equitable, accessible service delivery
- Strong and effective workforce
- Joined with communities to reduce poverty
- Operational excellence

Self-Sufficiency Programs Services

Safety Net: Housing, food security, income, transportation, childcare, clothing

Family Stability: Medical access, physical health, emotional health, substance use, school engagement, social support, safety, parent education

Connection to Careers: Training and education, learning environment, communication, workplace skills, work experience

Child Welfare

Marilyn Jones, Director

Jana McLellan, Deputy Director

Every child and family has a safe and positive environment in which to live and develop.



DHS DIRECTOR'S OFFICE

Child Welfare Keys to Success

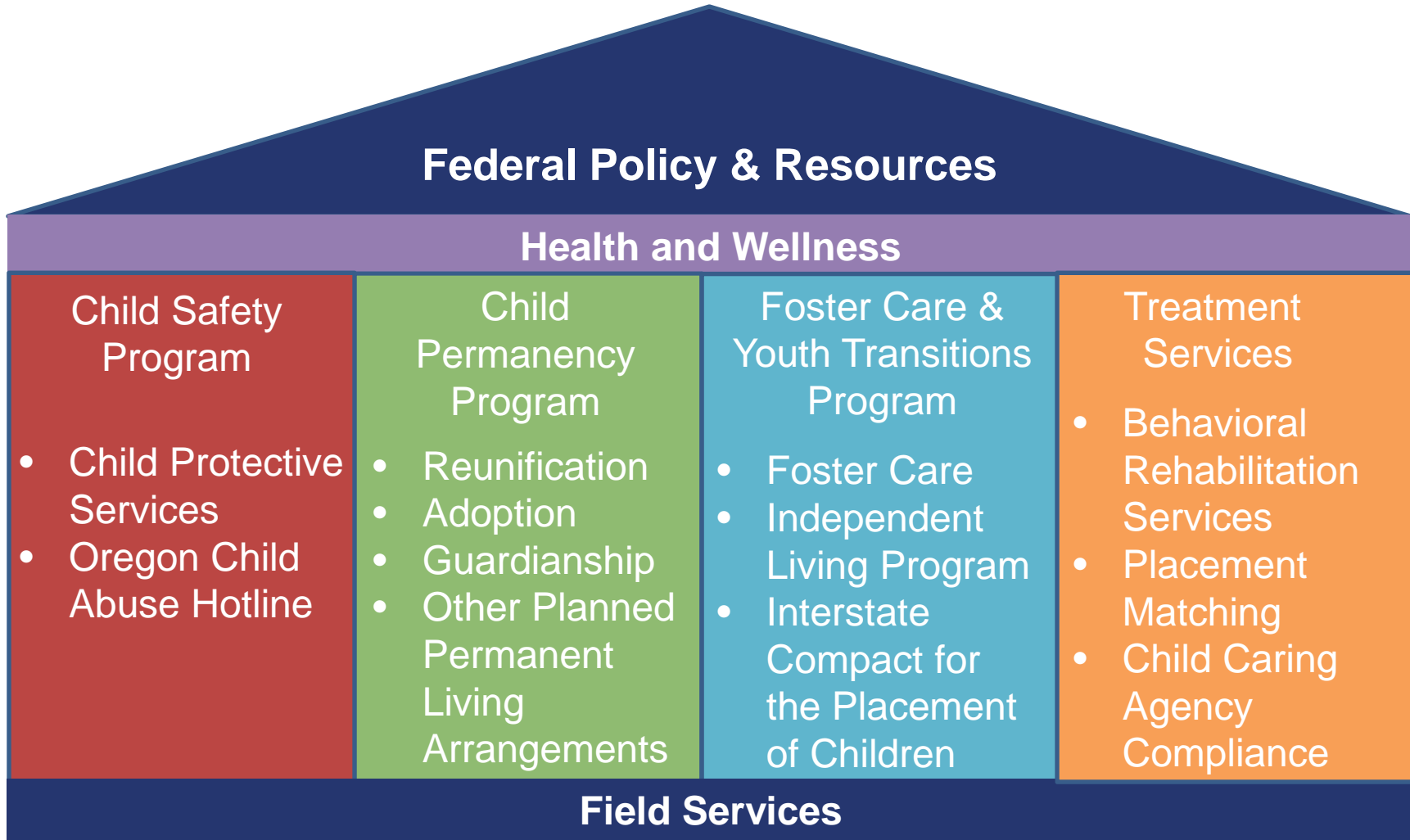
**Child centered
focused**

Partnerships

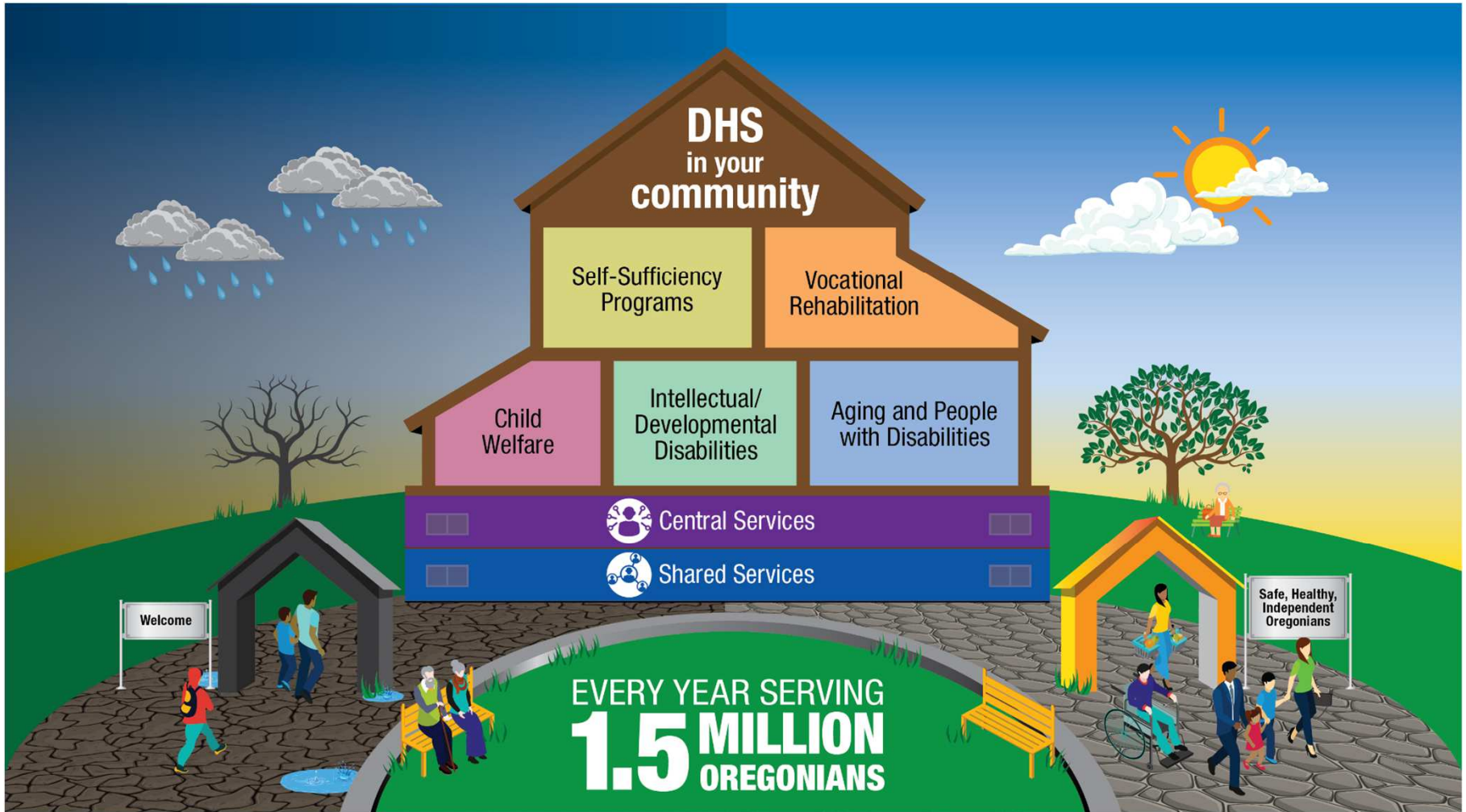
**Leading to
excellence**

**Professional
discretion & data-
informed decision**

Child Welfare Services



DHS DIRECTOR'S OFFICE



DHS DIRECTOR'S OFFICE

A clear, unifying direction for our future

*A person-centered delivery system
that provides services
in a seamless and integrated manner
across the entire continuum of life,
and in strong partnership with other
public, private and community organizations.*



www.oregon.gov/dhs