



Oregon Department of Land Conservation and Development

Carrie MacLaren, Deputy Director
Palmer Mason, Senior Policy Advisor





Mission

To help communities plan for, protect and improve the built and natural systems that provide a high quality of life. In partnership with citizens and local governments, we foster sustainable and vibrant communities, and protect our natural resources legacy.

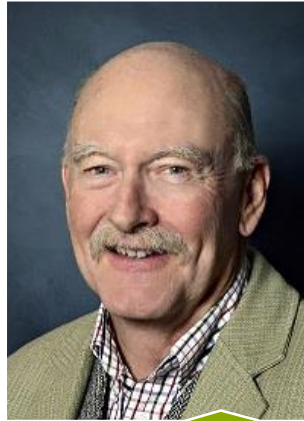
Land Conservation and Development Commission



Jerry Lidz, Chair



Robin McArthur,
Vice Chair



Sherman Lamb



Catherine
Morrow



Melissa Cribbins



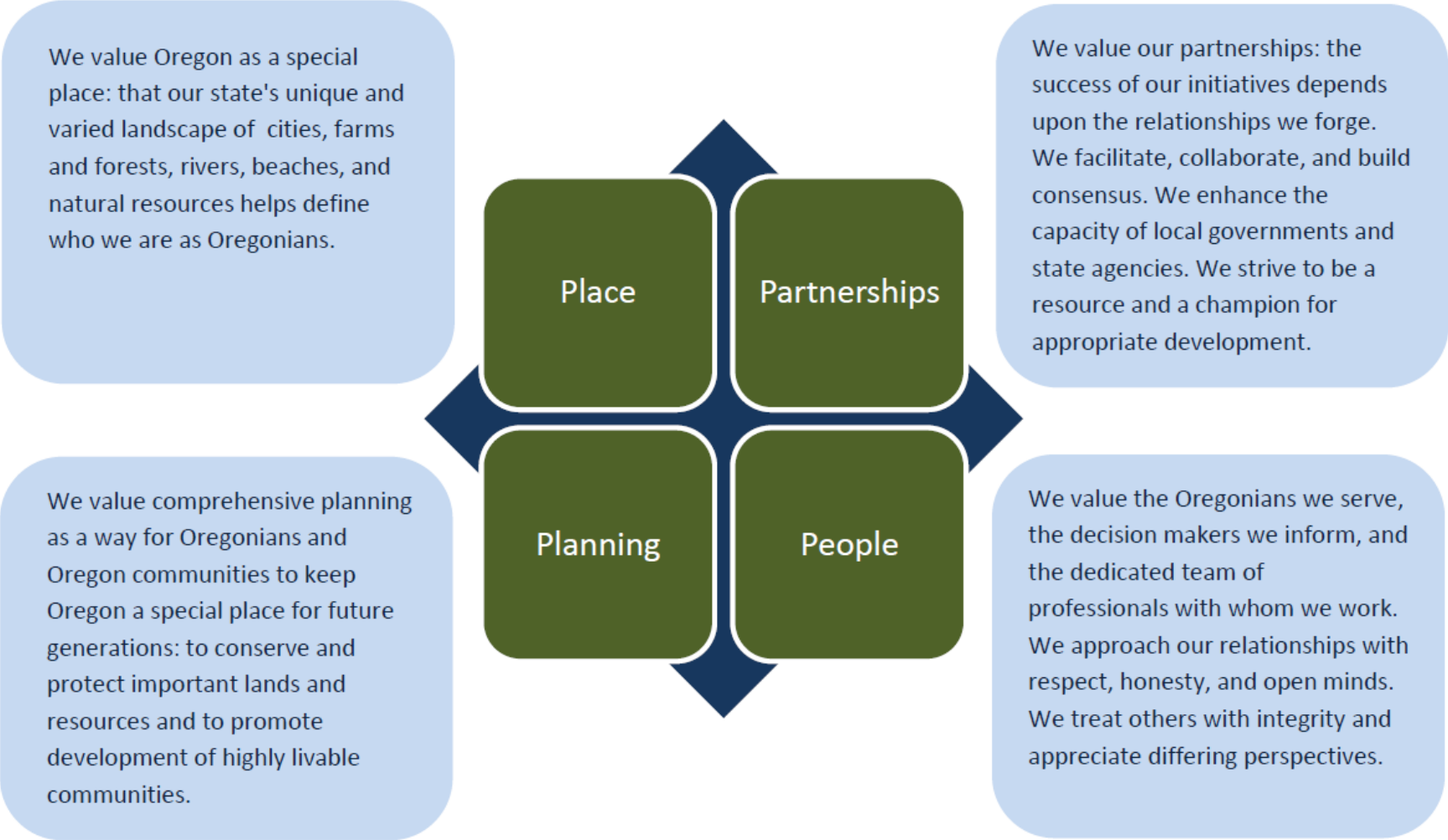
Katie Pearmine



Anyeley Hallova

The LCDC meets 6 times a year and holds meetings around the state

DLCD Values



Planning for thriving communities and protecting our natural resources legacy.

19 Statewide Land Use Planning Goals.



Process Goals

- Applies to all land use planning

Public Participation
Making fact based decisions
Evaluating alternatives
Creating implementation measures

Resource Goals

- Applies to cities and counties

Farm and Forest Lands
Natural Hazards
Recreation
Natural Resources
Willamette River Greenway

Urban Goals

- Applies to cities

Economic Development
Housing
Public Facilities
Transportation
Urban Growth Boundaries

Coastal Goals

- A networked partnership of federal and local governments, and tribes

Estuaries
Beaches and Dunes
Ocean Resources
Beach Access
Tsunami Resilience

DLCD Snapshot



Employees

- 57 FTE in 2017-19
- 8 offices around the state
- 9 Regional Representatives
- Approximately 15 technical experts

The City of Turner gave their 5th Annual Customer Service Award to a DLCD employee in 2018

Budget

- \$21 million budget (2017-19)
- \$12.9 million General Fund
- \$6.4 million in Federal Funds, \$1.7 million in other funds
- \$1.2 million dollars in grant funding for local governments

Approx. 66% decrease in local government grant funding from 2000-2017

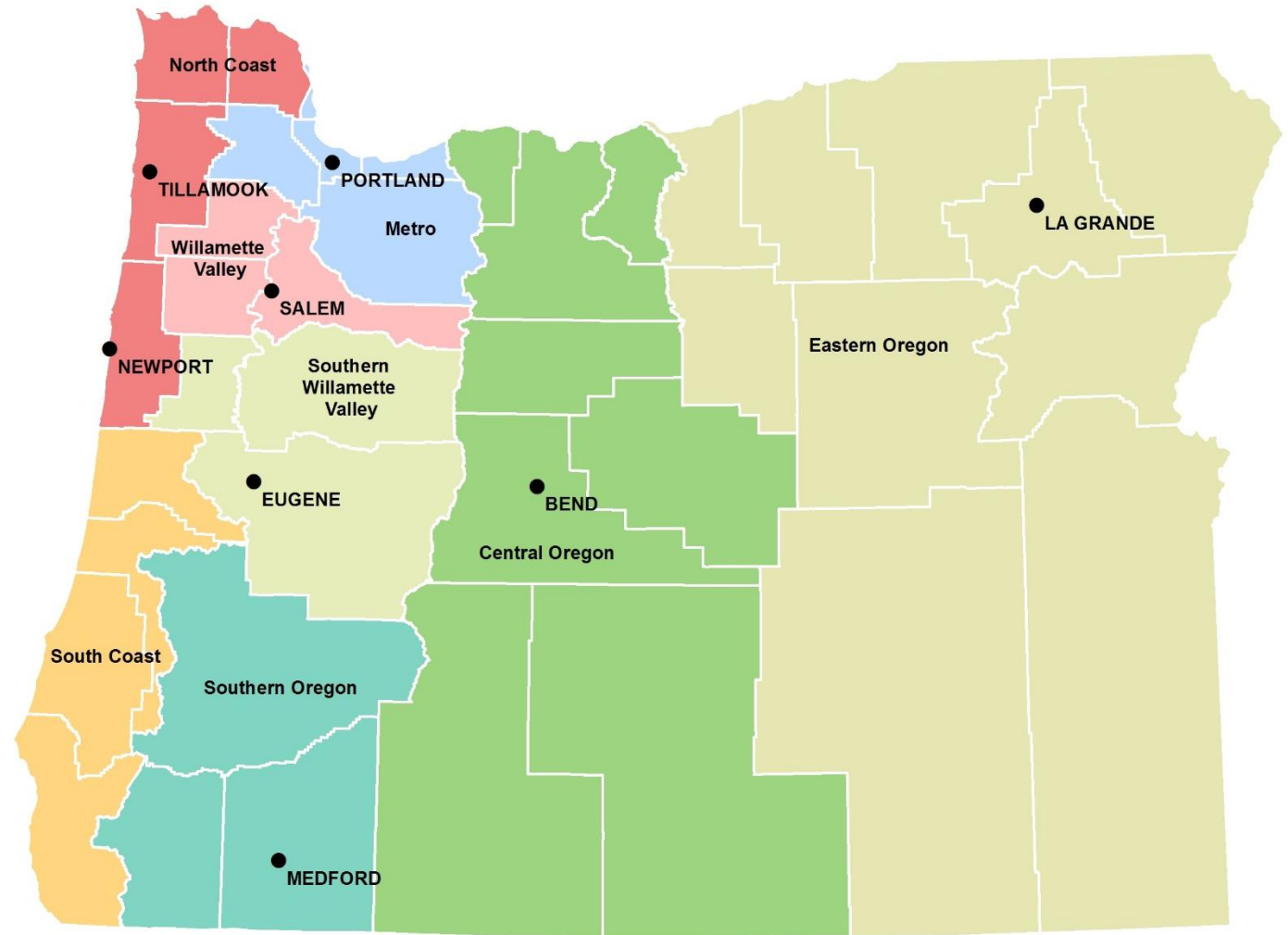
Provide State Assistance & Guidance

- “Acknowledge” plans *after* adoption at the local level
- Each city and county has a *unique* plan
- DLCD makes sure that plans meet statewide goals

The goal is coordinated land use and predictable development

How We Achieve Outcomes

Maintaining a Regional Presence – Eight Field Offices and Regional Solutions Centers



How does DLCD serve local governments?



Technical Assistance

- Approximately 15 experts on staff
e.g. economic development, tsunami resilience, transportation, housing
- 9 Regional Staff

Model Code

- Implementing ADU requirement
- Model Code for Small Cities
- Tsunami Planning
- Flood Damage Prevention

Guidance Documents

- Housing Choices Guide Book
- Space efficient infill development
- Planning for Schools & Livable Communities

Data Availability

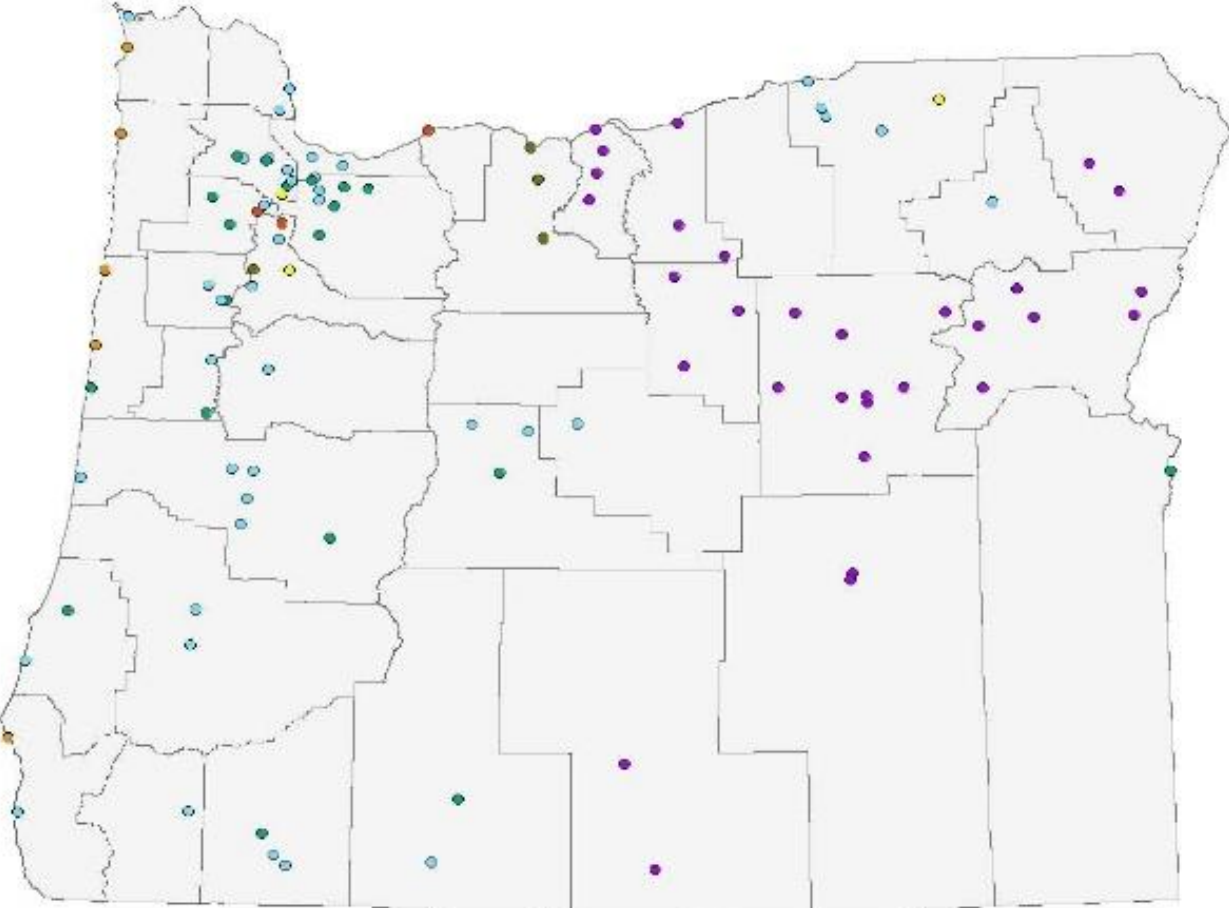
- Online Mapping / GIS Applications
- Population forecasts
- Online reporting for cities and counties
- Simplified UGB Calculator

Grants & Direct Assistance

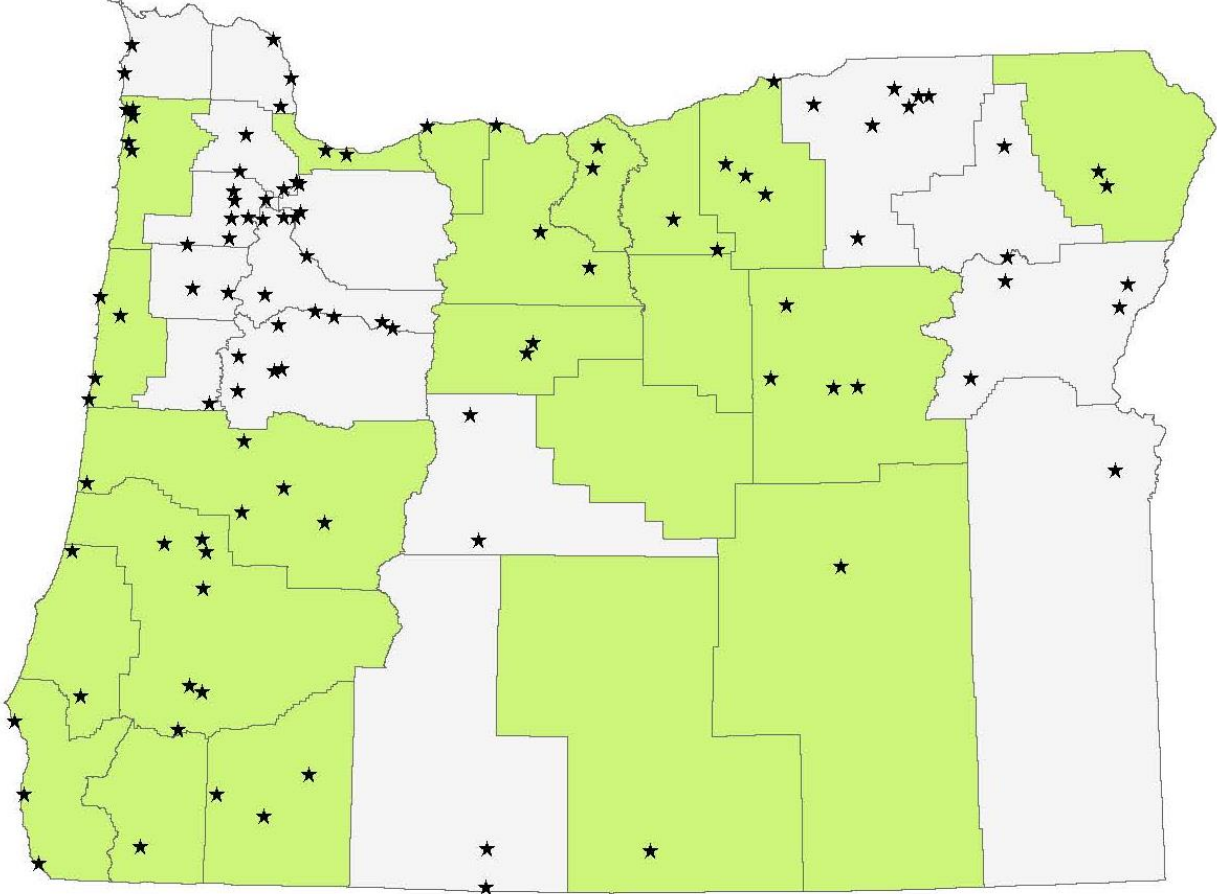
- Small cities and counties
- General Grants
- Planning for Housing
- EO Econ Dev.
- Transportation and Growth Management
- Coastal Grants

DLCD: Direct Assistance and Grant Funding

DLCD Direct and Grant Assistance

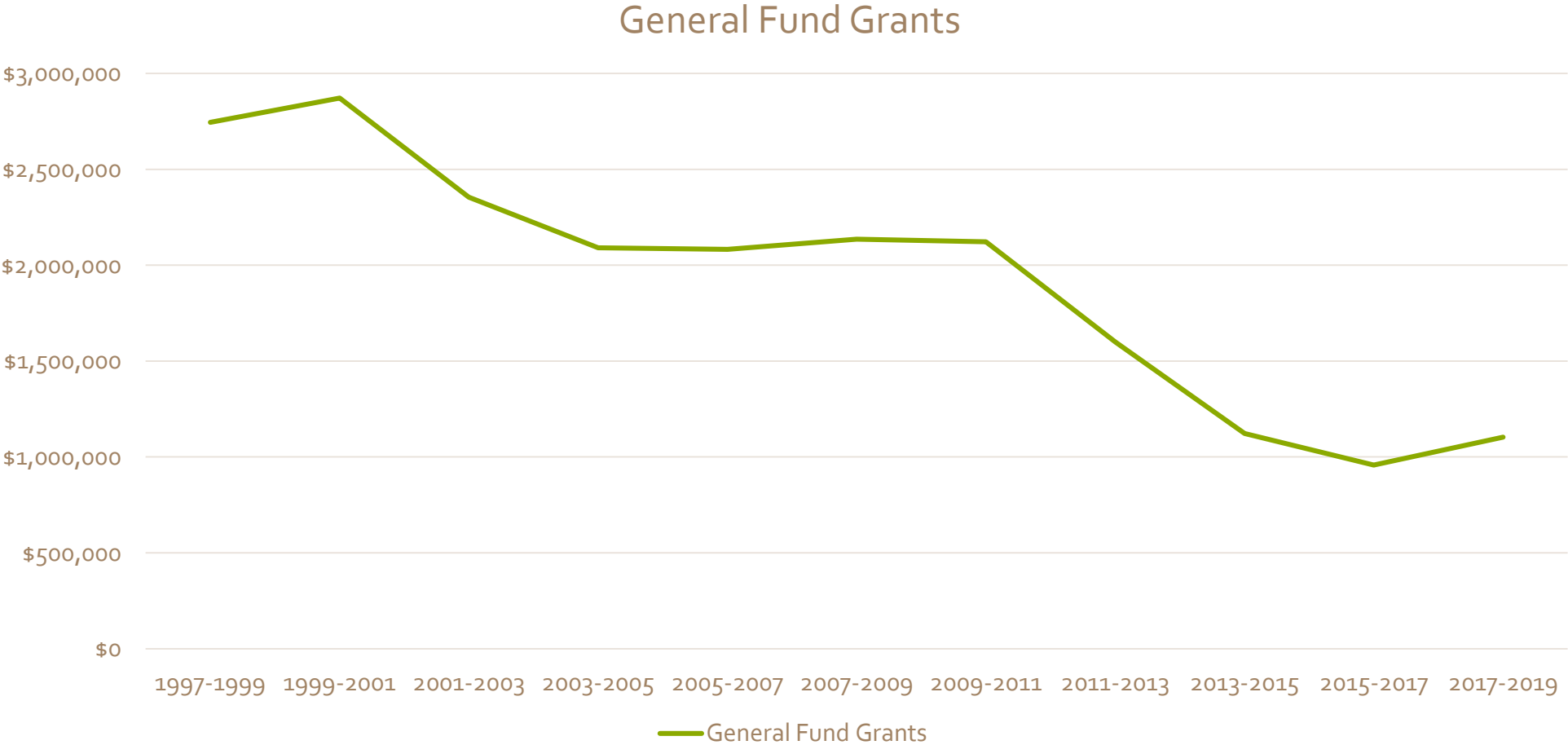


Planning Assistance for Small Cities and Counties



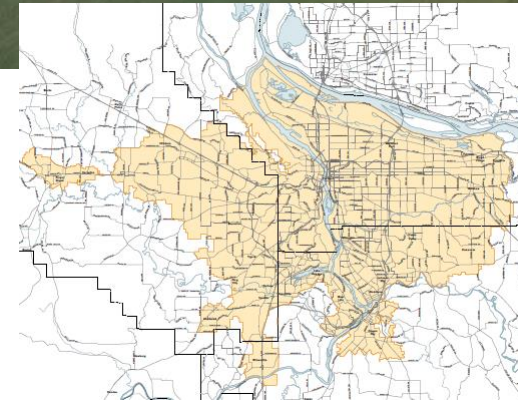
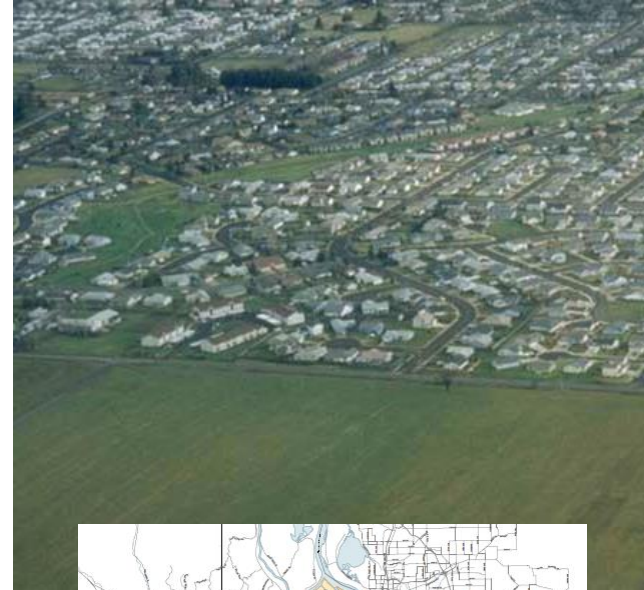
*2017-19 Biennium: includes Direct Assistance funding for Oregon Housing Planning Project and Eastern Oregon Economic Opportunities Analyses

Decreasing Grant Assistance to Communities



*Does not include DLCD grant funding permanently allocated to the Portland State University Population Research Center

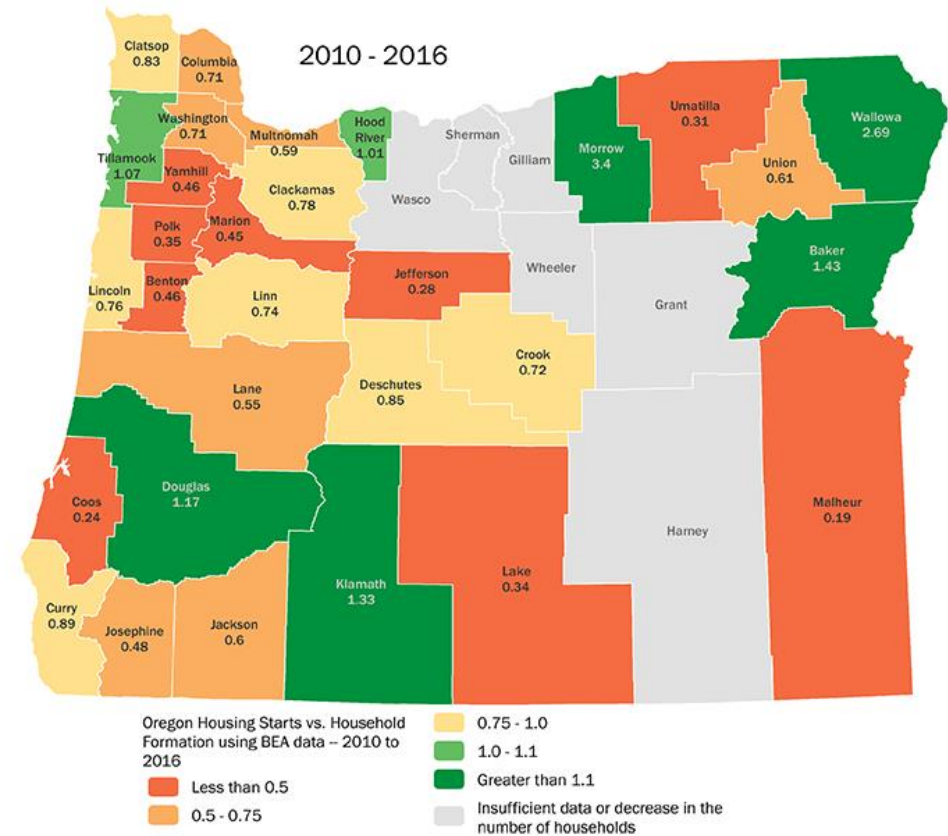
Urban Growth Boundaries



Where We Work: Housing

- Goal 10 & Goal 14
- 20 – year supply of residential land

Housing Units vs. Household Formation, 2010 to 2016

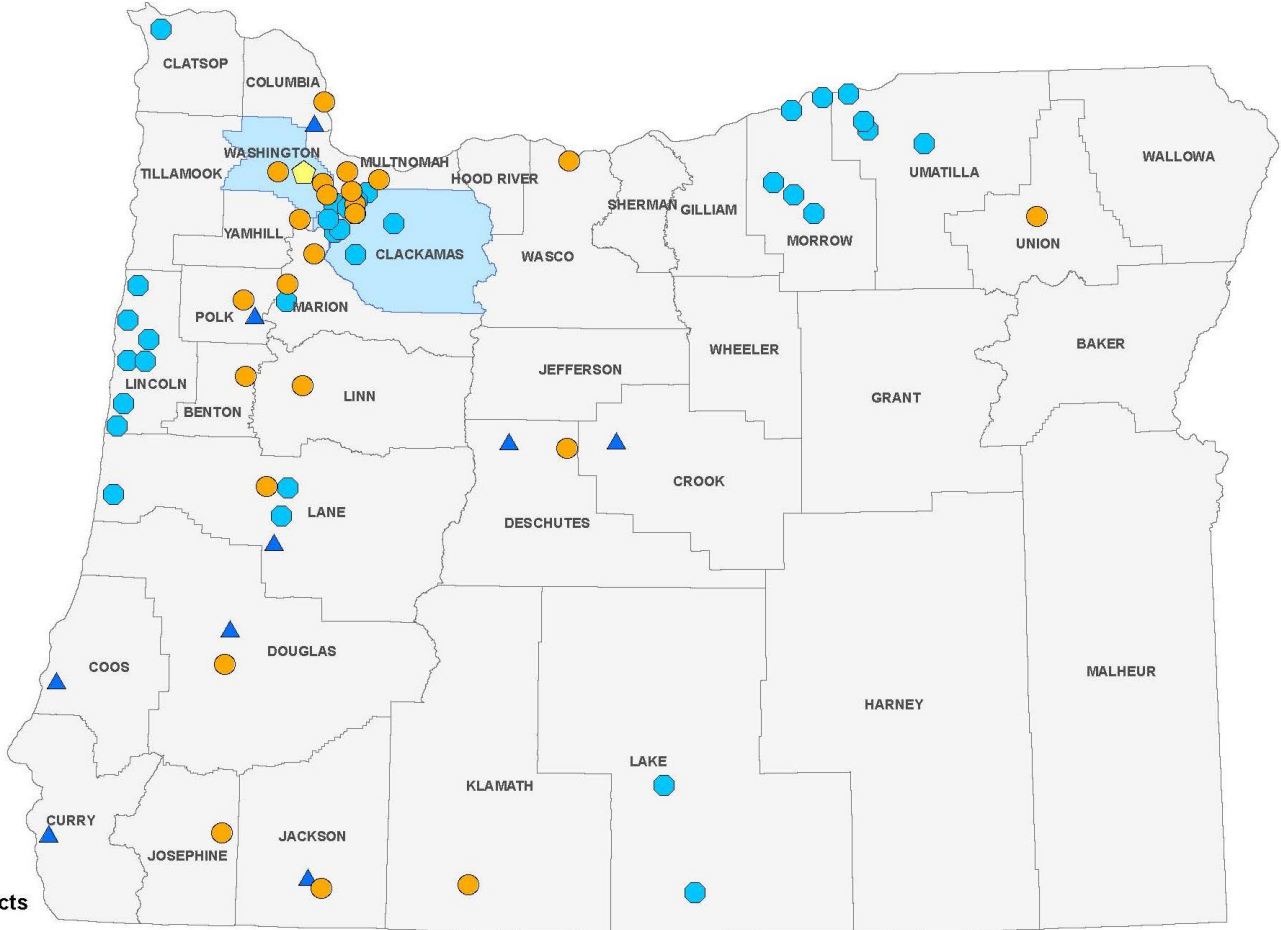


Oregon Housing Planning Project: HB 4006

1.73 Million
 100 Cities Applied
 56 cities served (45 projects)

Four Areas

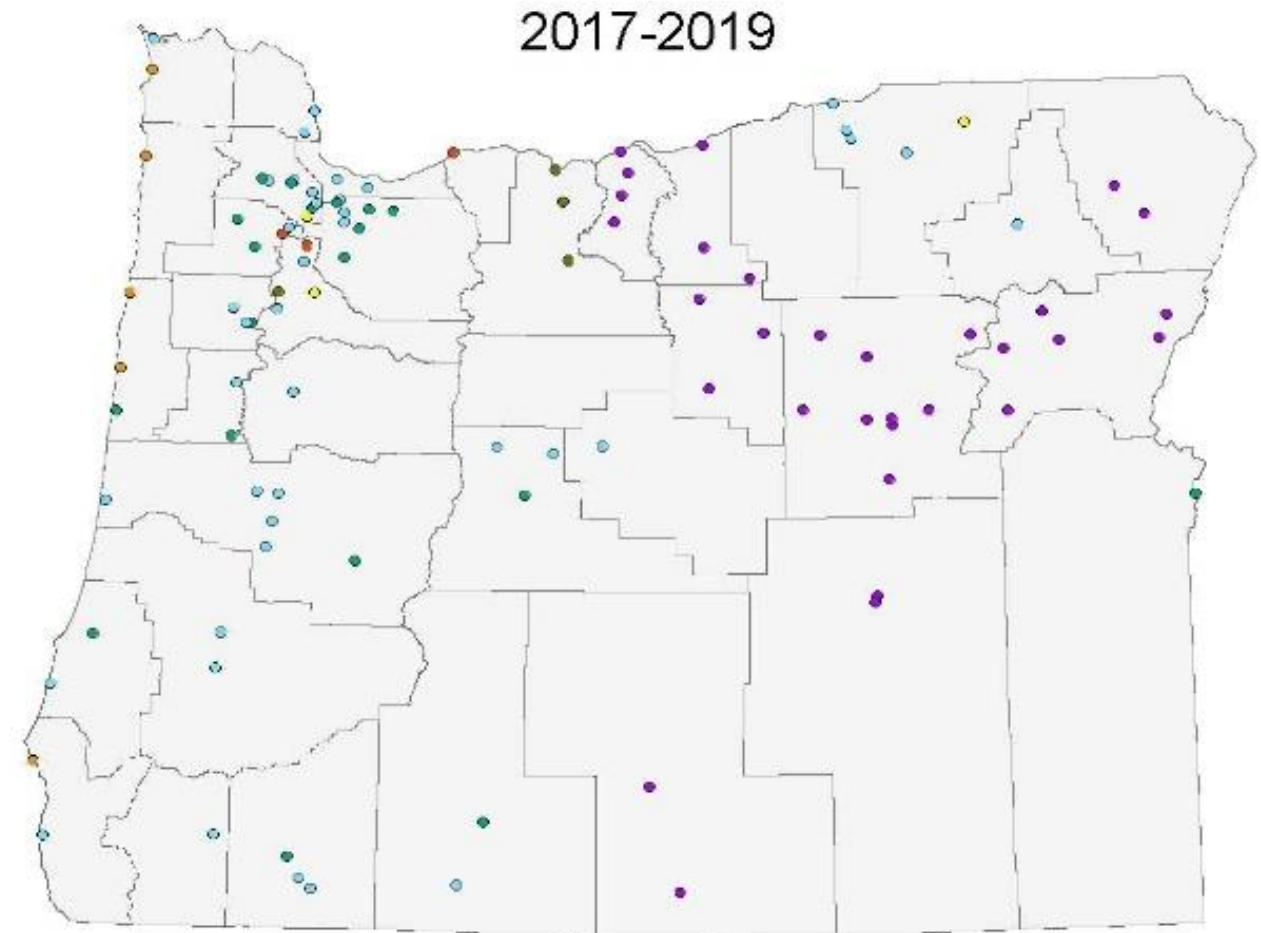
- HNA – 22 cities
- Code Audits – 7 cities
- Code Updates – 8 cities
- Implementation Plans – 8 cities



OHPP Funded Projects
 ● Priority 1 Cities
 ▲ Priority 2 Cities
 ⬡ Priority 3 Cities
 ● Priority 4 Cities and Counties

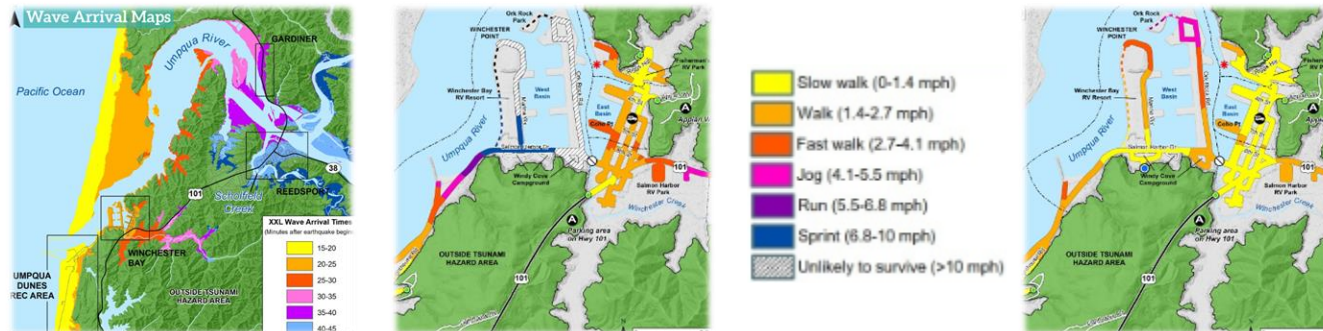
Economic Development

- Goal 8 & Goal 14
- 20 – year supply of employment land
- Eastern Oregon Economic Planning



Tsunami Resilience Project

1. Data – Beat the Wave Modeling



2. Land Use Strategies

Post-disaster & long-term planning

- Secure land above zone for emergency response
- Identify options for redevelopment & relocation of housing, business, & community functions



Tsunami Evacuation Facilities Improvement Plan

All-inclusive program:

- evacuation needs
- route designation
- system standards
- needed improvements



Tsunami Hazard Overlay Zone

For development & re-development:

- Limit certain new uses
- Incorporate evacuation measures
- Provide flexible development options



Transportation & Growth Management

- Joint program with ODOT
- Links transportation and land use
- Example of Quick Response Project
 - 4.5 acre downtown property
 - The “Talent Gateway Site Development Plan” was designed as part of a public-private partnership between the City, its selected private development partner, and project design team led by Walker Macy Architects.
 - Completed in 2018, the site design process assured compact, mixed-use, pedestrian-friendly development principles were integrated into five alternative development concepts considered by the City and its private development partner.



USE	
SENIOR HOUSING (3-stories)	60 UNITS
TOWNHOUSES	20 UNITS
BREWERY	5,000 GSF
MAKERSPACE	5,000 GSF
COMMERCIAL PAD	4,800 GSF
TOTAL PARKING	84 sp



The refined site plan includes commercial development connecting to the downtown, a brewery and makerspace that frame an open space gateway to the City, and desirable townhomes facing a central community open space (example above). Senior housing is located to the south with a protected southern patio.

The northern edge of the site at the corner of Valley View Rd. and Hwy. 99 provides an active commercial edge, drawing visitors into the City. The southern portion of the site transitions to residential uses compatible with the adjacent neighborhood.

Talent Gateway - Refined Site Plan

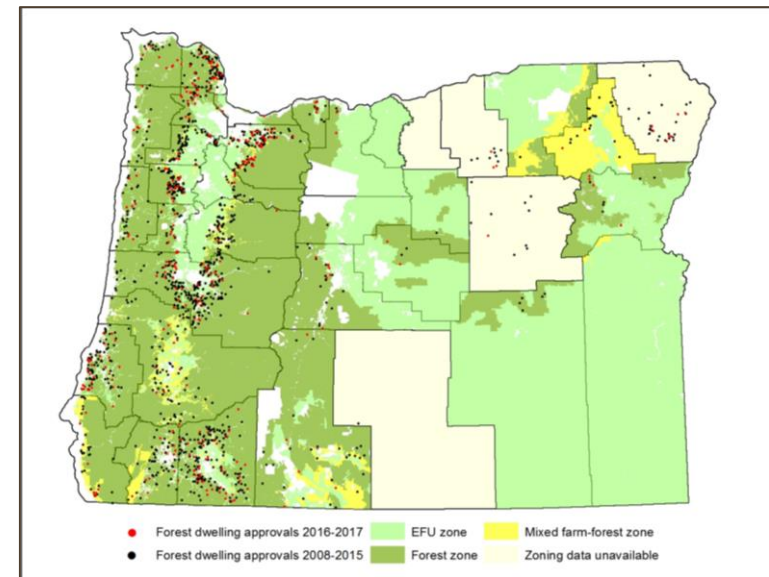
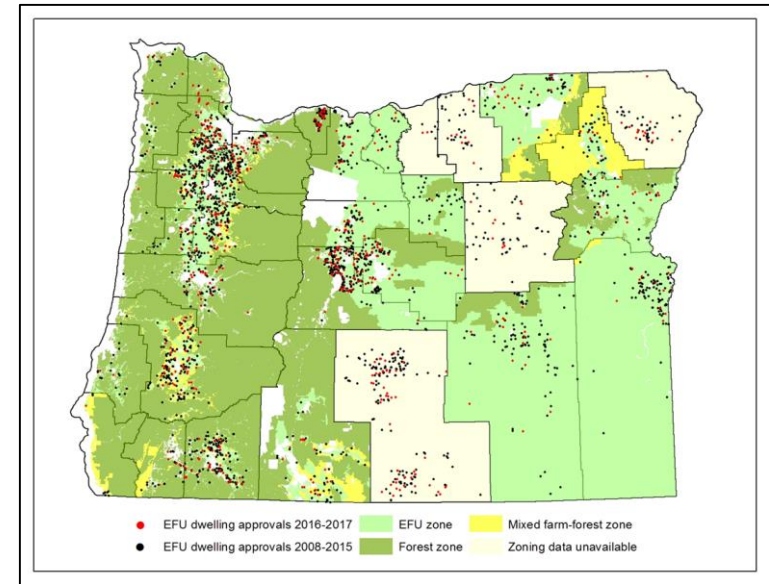
06.14.2018



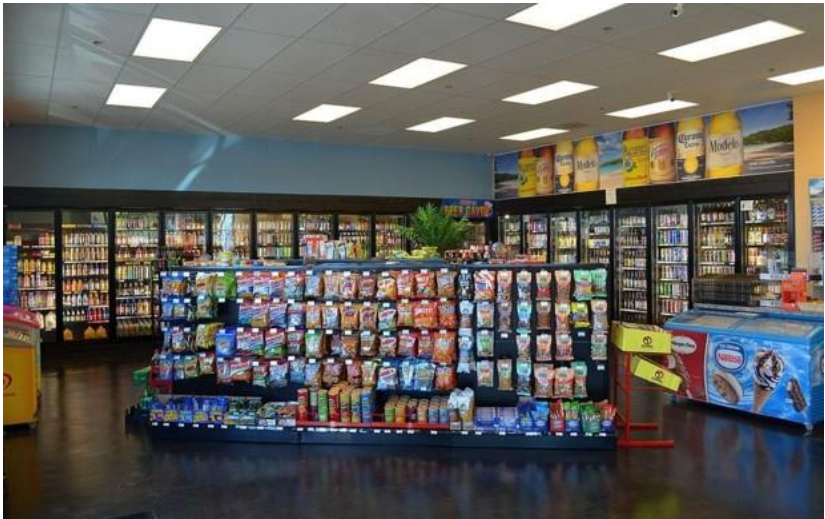
Farm & Forest Lands

- Protect farm and forest land base for commercial use
 - Agriculture: Linked to \$50 billion in sales & 326,000 jobs (14% of employment)
 - Timber: 61,000 jobs; national leader in production of softwood lumber and plywood

- Protect farm and forest lands from conflicts



DLCD Success Story: Independence, Oregon





Thank you

Carrie MacLaren, Deputy Director

Palmer Mason, Senior Policy Advisor

