



Early Childhood Education: Early Learning Division

Presentation for the House Education Committee

MIRIAM CALDERON, EARLY LEARNING SYSTEM DIRECTOR

January 23, 2019

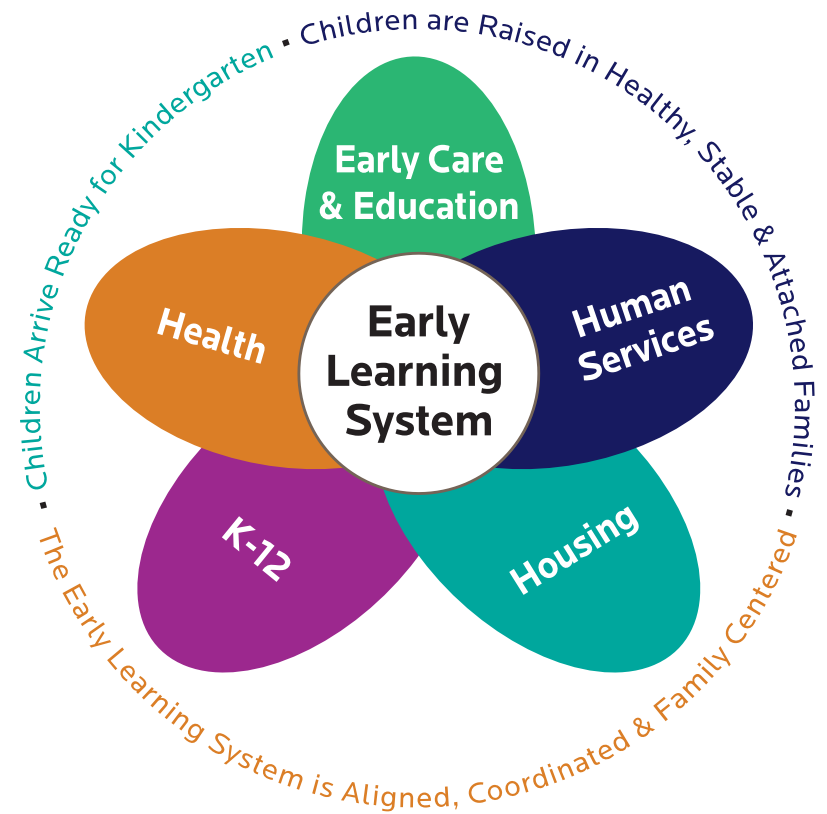
Early Learning Division Purpose

2

History and Mission

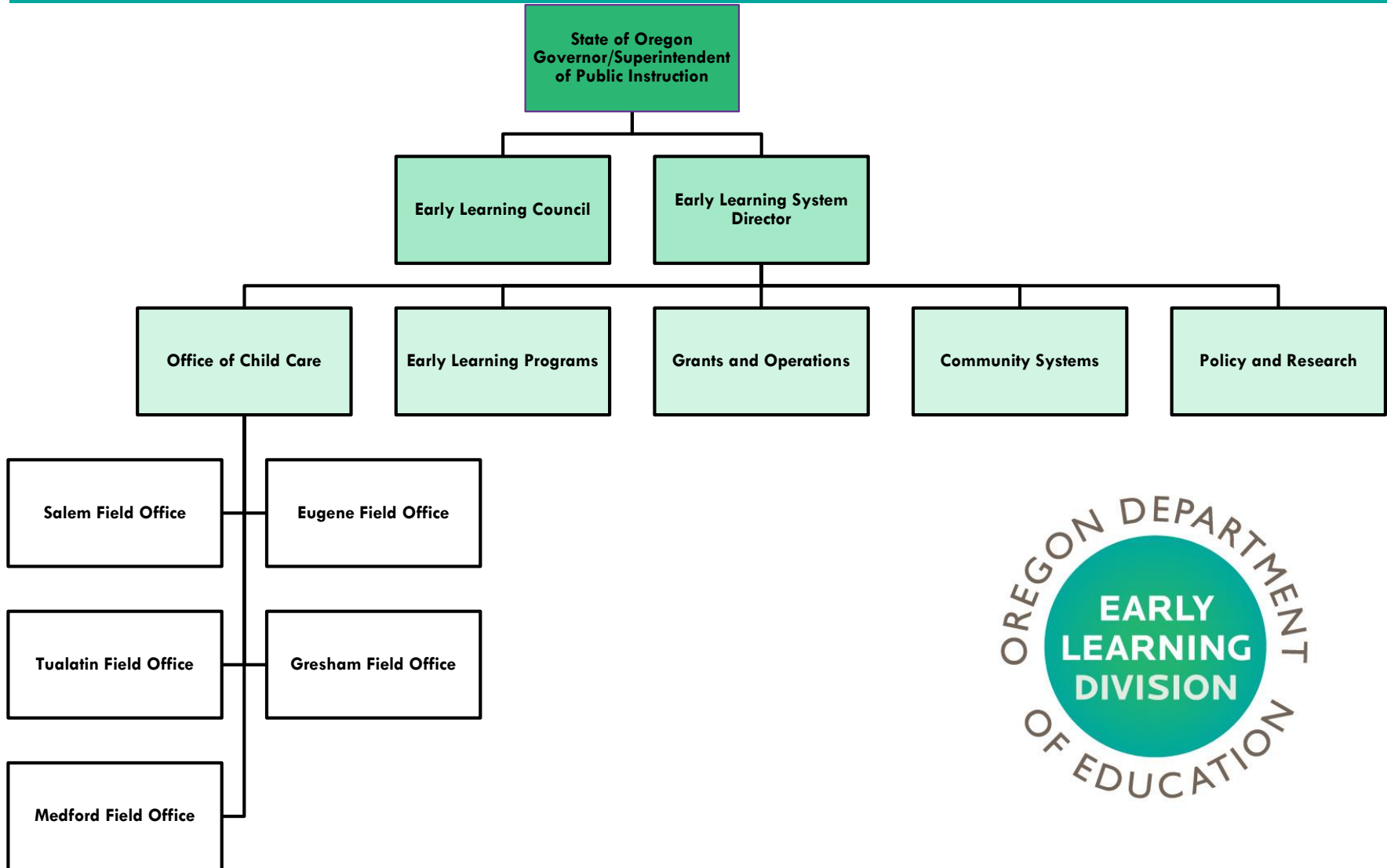
The Early Learning Division (ELD) was created in 2013 alongside the Early Learning Council (ELC) to coordinate and elevate an early learning system and consolidate early learning programs.

The ELD supports all of Oregon's young children and families to learn and thrive.



Organizational Structure

3

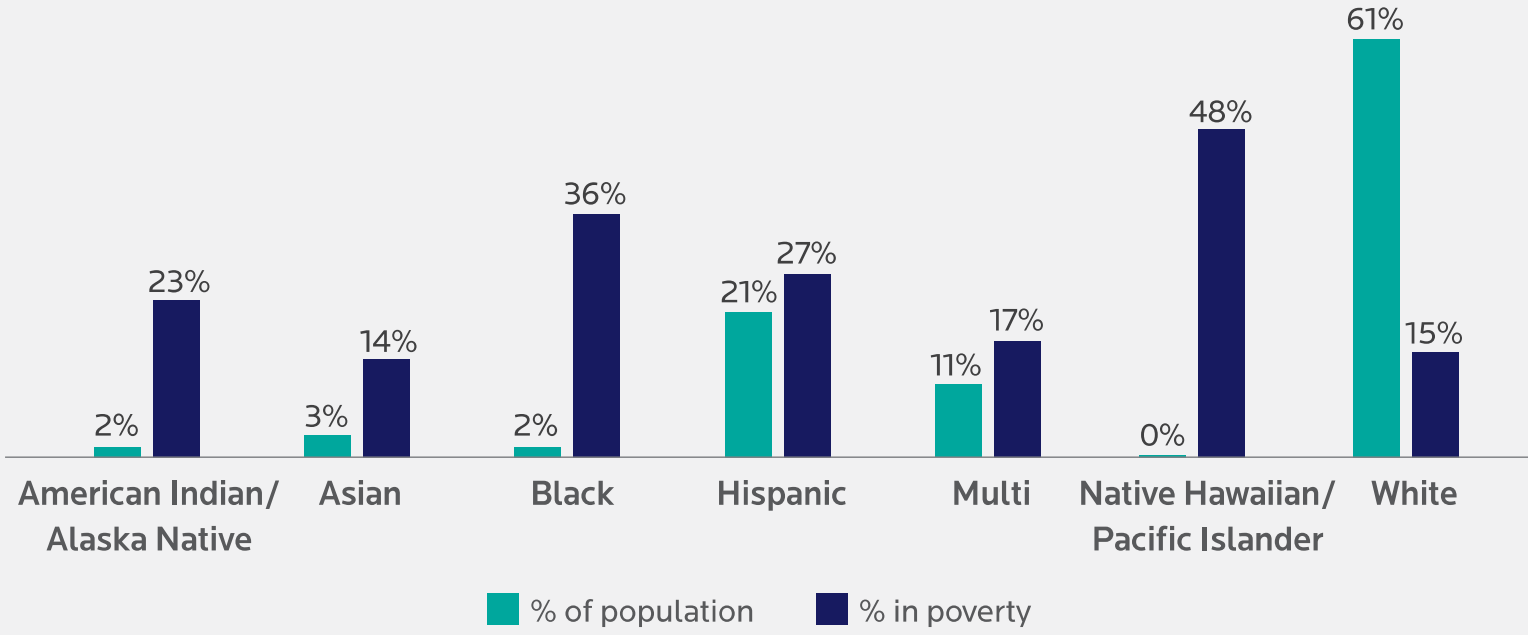


Focus on historically underserved children, families, and communities

Of 230,000 children under 5 in Oregon:

Racial and economic disparities emerge early.

Figure 3. Oregon children under 5: percent of population and percent in poverty by racial/ethnic groups^x



And the providers who care and educate them....

Approx. 25,000 early childhood educators across Oregon work in B-5 settings: child care centers, homes, schools, Head Start



29%
people
of color

\$8-
\$35/
hour

13 – 31%
bilingual or
non-English
speaking

35%
BA+

25%
turnover

Early Learning Division Programs

Child Care and Preschool

- Oregon Prekindergarten
- Preschool Promise
- Child Care Licensing
- Spark
- Child Care Lead Agency

Early Childhood Workforce

- Professional Development
- Oregon Registry Online
- Education Awards

Family Supports

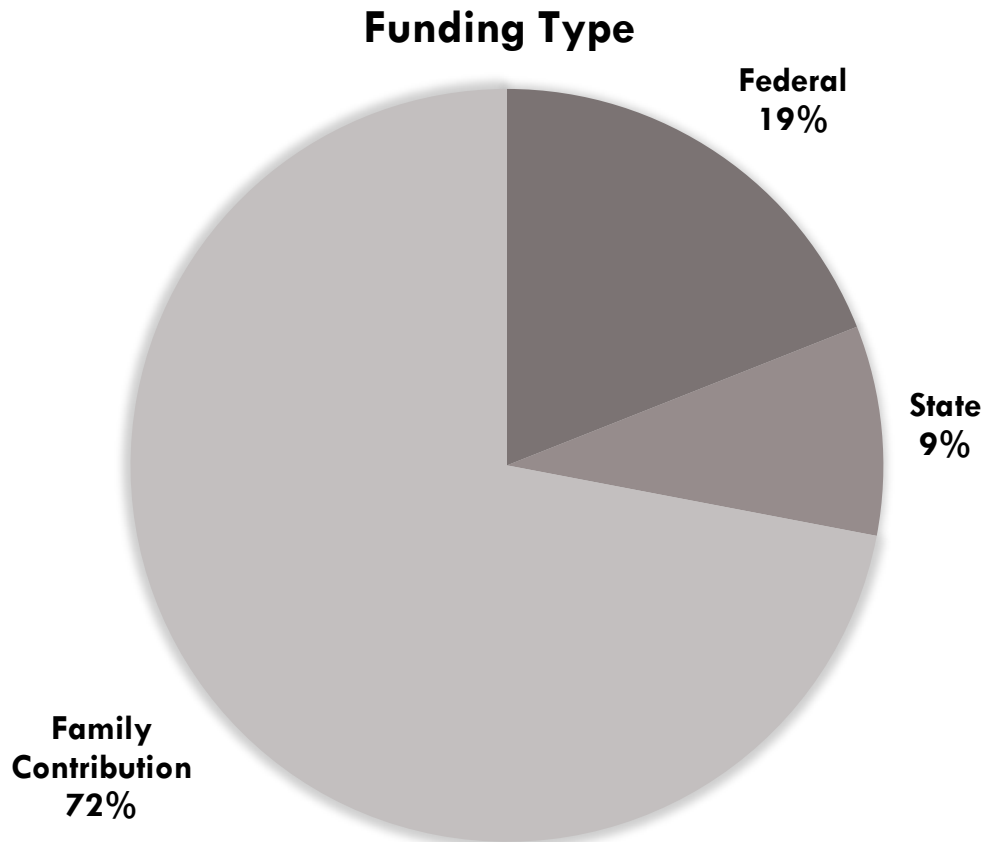
- Healthy Families Oregon
- Relief Nurseries
- 211 (Child Care Referral)
- Vroom Parenting Education Initiative

Kindergarten Transitions

- Kindergarten Partnership and Innovation Fund

16 regional Early Learning Hubs work across traditional sector boundaries to align and coordinate early learning programs and services in their communities.

ECE is predominately a market system, and revenue sources shape the market



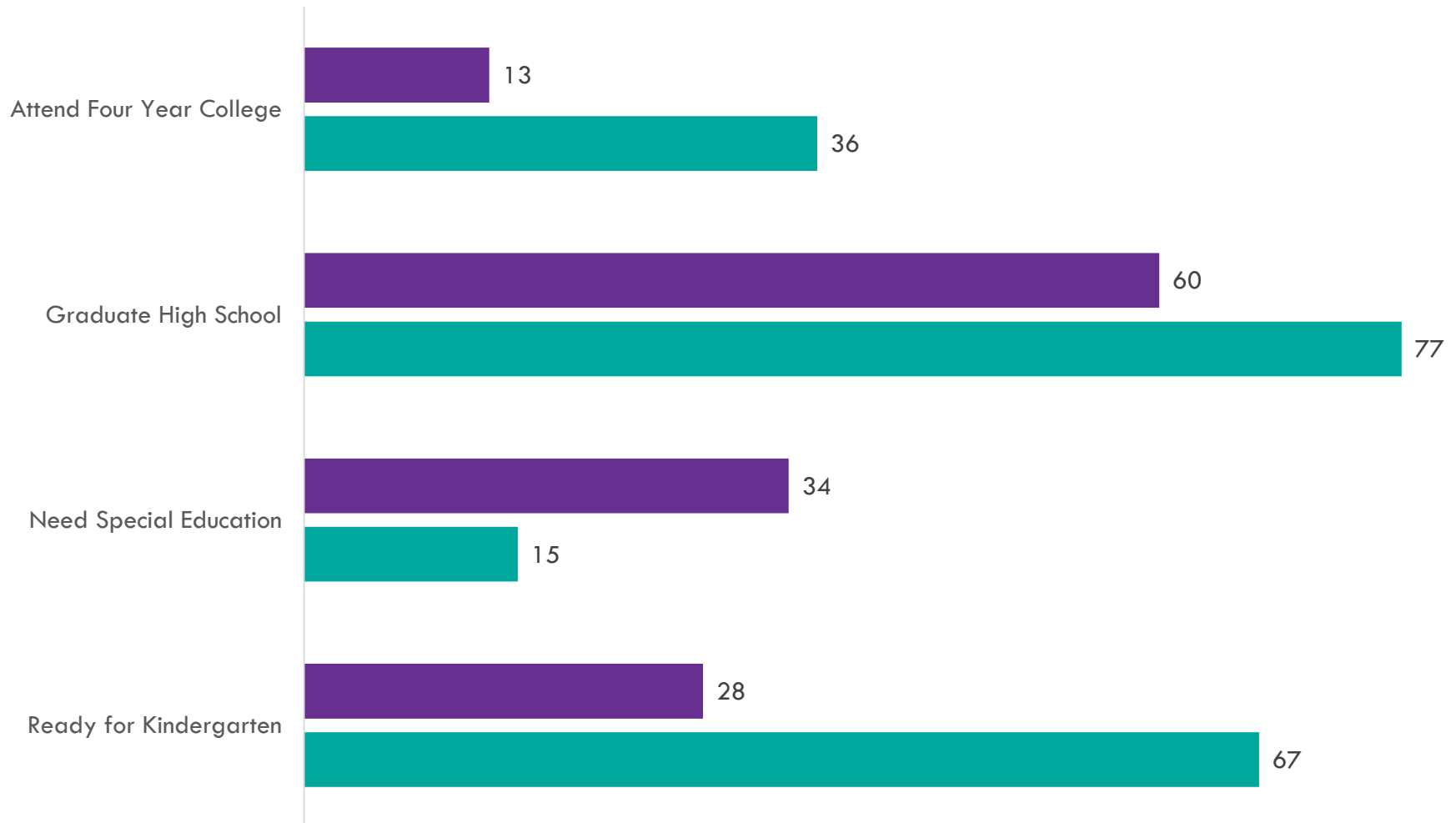
- ✓ **30,000 preschoolers in low-income families cannot access preschool**
- ✓ **1 available child care slot for every 8 infants in almost every community in Oregon**
- ✓ **Gap between what parents can afford and the cost of delivering quality care**

SOURCE: WEBER & PRATT, OHSU, 2018

Access to ECE improves educational outcomes and attainment

8

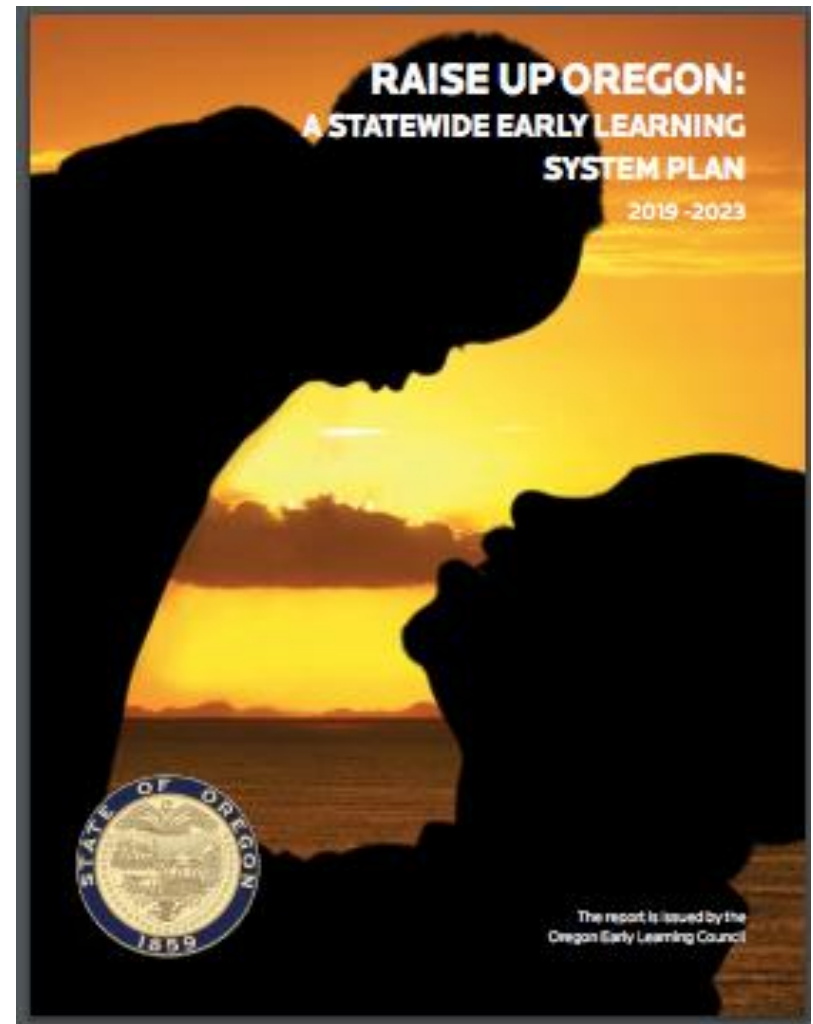
■ No High-Quality Early Learning ■ High-Quality Early Learning



ELD 2019 Selected Initiatives

9

- Raise Up Oregon
- Preschool Development Grants Birth to Five
- Baby Promise (pilot)





Questions?

