

ANNUAL VISITOR INFORMATION*

Day-use: 51.5 million; Overnight Camping: 2.7 million
Compared to other 49 states, Oregon ranks:

Category of Comparison	Oregon's Ranking	Oregon's Number	National Median
State park acreage	30	107,960	151,410
Number of park areas	8	258	74
Day-use attendance	3	51.5 million	7.8 million
Overnight attendance	7	2.7 million	904.6K
Campsite nights rented	6	735,211	244.1K
Total visits per state park acre	2	502:1	73:1
State park acres per 1,000 population	29	26:1	30:1
Number of cabins/cottage nights rented	5	74,556	22.9K

*Data Source: National Association of State Park Directors annual survey for July 1, 2015–June 30, 2016 (fiscal year).

CAMPING FEES

NOTE—Rate ranges are per site, per night and vary from park to park. Call 1-800-551-6949, or visit www.oregonstateparks.org for specific rates. All rates are subject to change.

Full hookup: \$24–32 Electric: \$22–29
Tent: \$17–21 Primitive: \$10–11

Special (non-traditional) camping rates:

Standard Yurts: \$41–45 Deluxe Yurts: \$80
Tepees: \$41–44 Hiker/Biker: \$5–6
Rustic Cabins: \$41–44 Deluxe Cabins: \$85–90

30 parks statewide feature designated yurts and/or cabins that allow up to two pets for \$10 extra per night.

DAY-USE PARKING FEES

Day-use permits are required year-round in 26 parks.

Daily parking – \$5 per vehicle
12-month parking permits – \$30
24-month parking permits – \$50

Special sales: 12-month permits \$25 in December

Annual and two-year parking passes are sold by some merchants near day-use fee parks and at major OPRD offices. Also sold online at oregonstateparks.org and by the State Parks Information Center: 1-800-551-6949 and OPRD office in Salem: 503-986-0980.

TEN SAFETY PRINCIPLES (The OPRD Safety Cornerstone)

We provide places where people are healthy and safe.

1. Each OPRD manager, employee and volunteer is an active participant in safety.
2. Employees work safely to achieve goals, not to avoid failure.
3. Leaders set the example for safe work practices and train others to work safely.
4. Managers ensure that safety is a key value by sharing the vision. They establish, enforce and personally follow good safety practices.
5. Safety plans and activities are flexible enough to meet the needs, expectations and culture of each group and individual.
6. Everyone honors the ICARE Contract, which encourages any employee to point out unsafe acts and to promote open, honest and respectful communication.
7. Effective training is an essential part of everything we do and safety is an integral part of all training.
8. A job hazard assessment, which examines conditions, methods and potential hazards, is conducted before starting each task.
9. A thorough analysis is conducted promptly after any incident of potential injury or property damage. The analysis identifies system failures and recommends remedial action.
10. Each OPRD manager, employee and volunteer is accountable for working safely. Positive safety behaviors are rewarded. Unsafe behaviors are corrected.

CENTENNIAL HORIZON for all

The state park system is fast approaching its 2022 centennial. The Centennial Horizon plan guides OPRD in shaping the future of Oregon parks, recreation and preservation. The core guiding principles are:

- **Saving Oregon's special places.** OPRD serves as Oregon's leading advocate for protecting some of the most iconic and popular places in Oregon.
- **Connect people to meaningful experiences.** A place—be it a park, an historic property, or an archaeological site—is meaningless without experiences. OPRD aims to provide great experiences to all who visit.
- **Taking the long view.** When we build and maintain parks, heritage areas, and facilities, we must balance the needs of today with tomorrow's health. This means using environmentally sound and culturally sensitive construction methods; being mindful of future costs; and creating strong partnerships to accomplish more together.

At the intersection of these three goals lies our agency mission, bolstered when creative staff work in cooperation with partners, volunteers, and the people we serve.

Centennial Horizon is online
oregon.gov/oprd/pages/centennial.aspx



OPRD Pocket Facts 2017-2018



OUR MISSION

Provide and protect outstanding natural, scenic, cultural, historic and recreational sites for the enjoyment and education of present and future generations.

Oregon Parks and Recreation Department
725 Summer Street NE, Suite C
Salem, Oregon 97301
Phone: 503-986-0980

www.oregonstateparks.org

ABOUT OREGON STATE PARKS
Overnight and Day-use Facilities

Overnight Camping: Camping in 52 parks (year-round camping in 28, reservations accepted at 38). Sites include:

Site Type	Number of parks with this site type	Total number of sites statewide
Full Hookup	24	1,248*
Electrical	36	2,395*
Tent	32	1,592*
Walk-in Tent	6	65
Primitive	13	212
Horse Camp	8	67
Standard Yurts	18	186
Deluxe Yurts	1	6
Rustic Cabins	11	61
Deluxe Cabins	6	29
Tepees	2	4
TOTAL	NA	5,865*

*Numbers are approximate
 The following additional types of overnight sites/accommodations are available:

- 31 Hiker/Biker camps
- 47 Group Tent areas
- 4 Group RV areas
- Rooms at two historic inns
- Silver Falls Conference Center and Youth Camp

DAY USE, GRANTS, OTHER PROGRAMS

- Day-use parking permit fees charged at 26 parks
- 51 reservable **day-use areas** at 18 parks
- 39 reservable **picnic shelters** at 24 parks
- **Meeting halls** in 15 parks
- **Park trails:** 1,000+ miles of OPRD-managed trails
- **Boating:** Docks, ramps or launch sites in 47 parks
- 154 **boat moorages** in four parks can be reserved

Natural Resource Programs

- Ocean Shores protects 362-mile shoreline
- State Scenic Waterways protects approximately 1,200 miles on 21 rivers and one lake.
- Willamette River Greenway protects 83 parcels totaling 3,838 acres.

Historic Preservation & Cultural Resources

- State Historic Preservation Office (SHPO)
- Oregon Heritage Commission
- Oregon Commission on Historic Cemeteries

Major OPRD-Administered Grant Programs

- Local Government/Veterans' and War Memorial (Lottery funded)
- County Opportunity (RV registration fee-funded)
- All-terrain Vehicle (ATV) program (funded from ATV permit sales and ODOT fuel tax transfer)
- Land and Water (Federal funds)
- Recreational Trails (Federal funds)

OREGON STATE PARKS RESERVATIONS
 1-800-452-5687 • oregonstateparks.org

Overnight accommodations may be reserved at 41 parks. Standard campsites (full hookup, electric hookup and tent), yurts, cabins, tepees, group camps, picnic shelters, group picnic areas, meeting halls and other special facilities are reservable by calling the number above or going online: www.oregonstateparks.org. Sites may be reserved from one day to nine months in advance.

Full payment – An \$8 non-refundable reservation fee, plus full payment for the length of stay, is required at the time reservations are made or changed.

Changes and cancellations – For arrivals today, call the park directly. For all other cancellations call the number above M-F, 8am-5pm or go online via www.reserveamerica.com

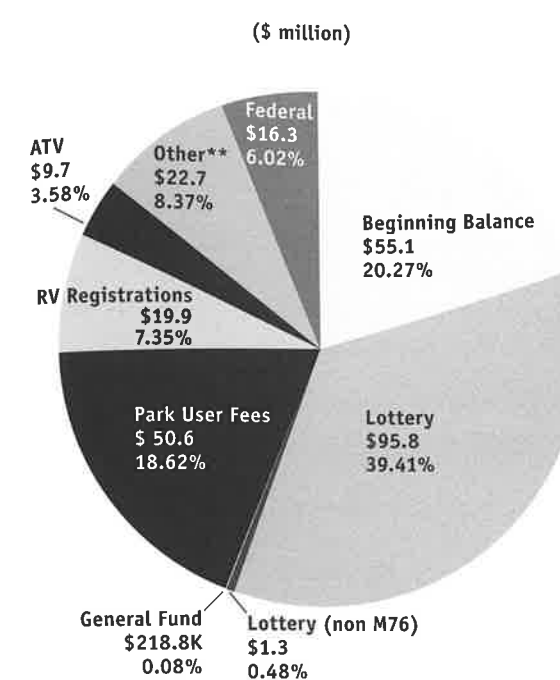
Changes are subject to fee and policy restrictions.

At campgrounds, check-in after 4 p.m.; check-out by 1 p.m.

OTHER OPRD INFORMATION SOURCES

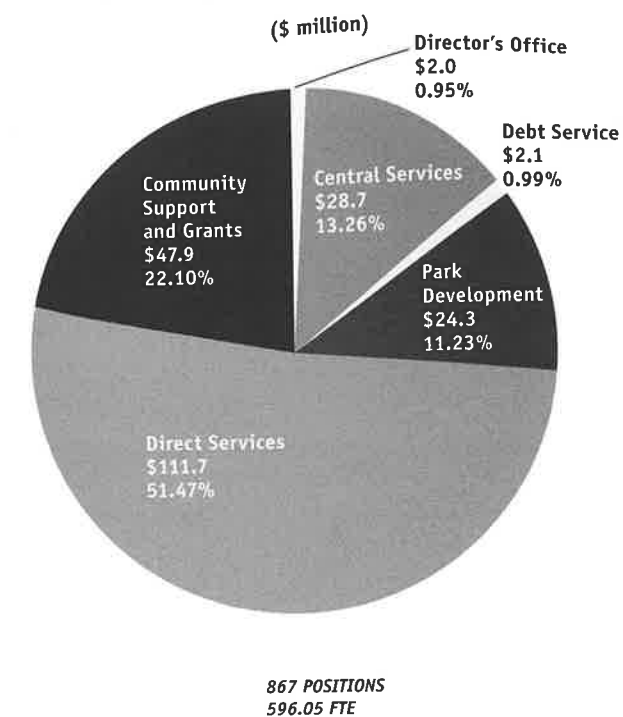
- State Park Information Center and Volunteer information: 1-800-551-6949
- Salem Office: 503-986-0707
- oregon.gov/oprd

2017-19 OPRD BUDGET REVENUES
 Legislatively Adopted Total \$272.1 million



**Other includes Salmon license plates, forest management, transfers from other agencies, Main Street Bond proceeds, etc.

2017-19 OPRD BUDGET EXPENDITURES
 Legislatively Adopted Total \$217.0 million



867 POSITIONS
 596.05 FTE