



---

# COVID-19 Update

Miriam Calderon  
Early Learning System Director

House Human Services Committee  
December 16, 2020



# Timeline of Emergency Child Care (ECC)

- **March 8:** Governor Brown declares State of Emergency
- **March 23:** Executive Order 20-12 closed child care March 25 – April 28 and established Emergency Child Care
- **April 30:** Phase 1 Emergency Child Care Grants
- **June 8:** Phase 2 Emergency Child Care Grants
- **August 14:** Release of the revised Guidelines
- **September 3:** Supplemental and Opportunity Grants
- **September 14:** Supplies Disbursement
- **November 2:** Phase 3 Emergency Child Care Grants
- **November 16:** Phase 4 Emergency Child Care Grants





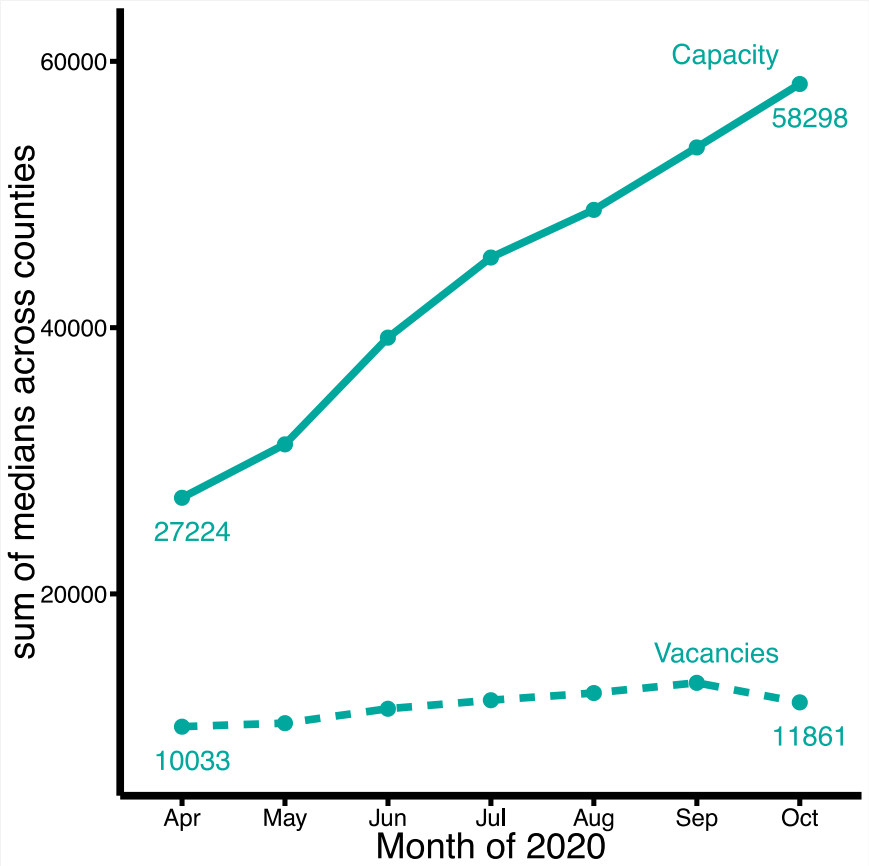
# COVID-19 Cases in ECE Settings

- ELD and Oregon Health Authority (OHA) have been working together to include outbreaks in child care in their weekly reports.
- The Office of Child Care (OCC) has been tracking the number of facilities with COVID-19 cases.
- When COVID-19 is in the community, it shows up in child care. However, child care has not been identified as a significant source of community spread.
- OHA has identified 28 active COVID-19 outbreaks linked to ECE settings in the most recent weekly report.

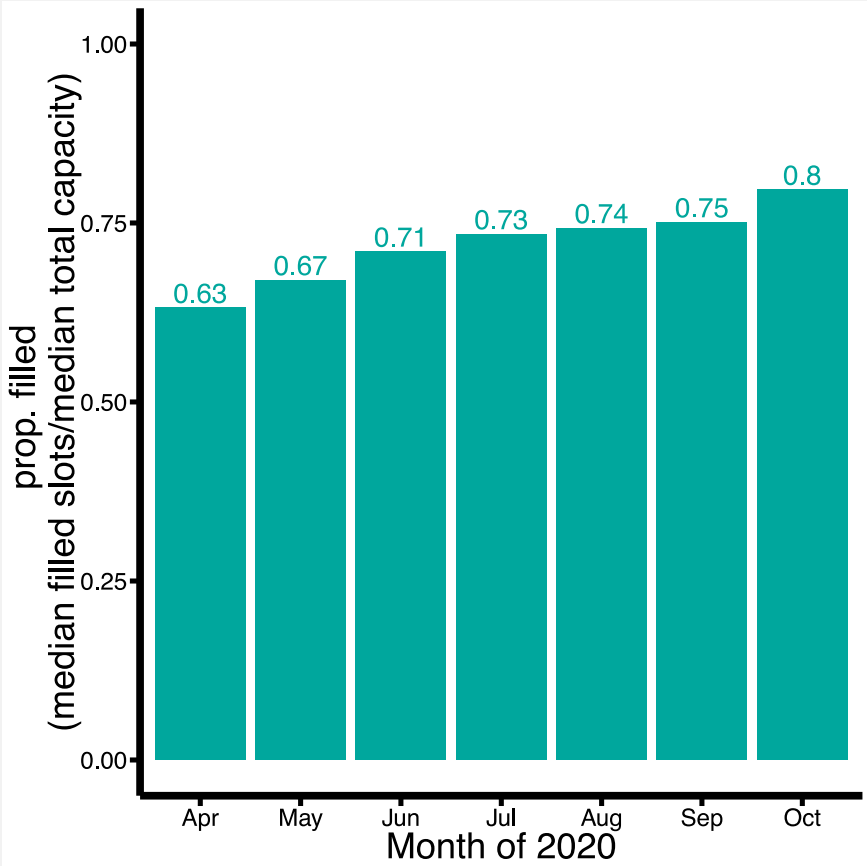


# Capacity and Vacancies during COVID-19

Both capacity and vacancies have generally increased during the pandemic.



Because vacancies and capacity have mostly tracked together, the proportion filled has been mostly the same over time, with a slight increase.

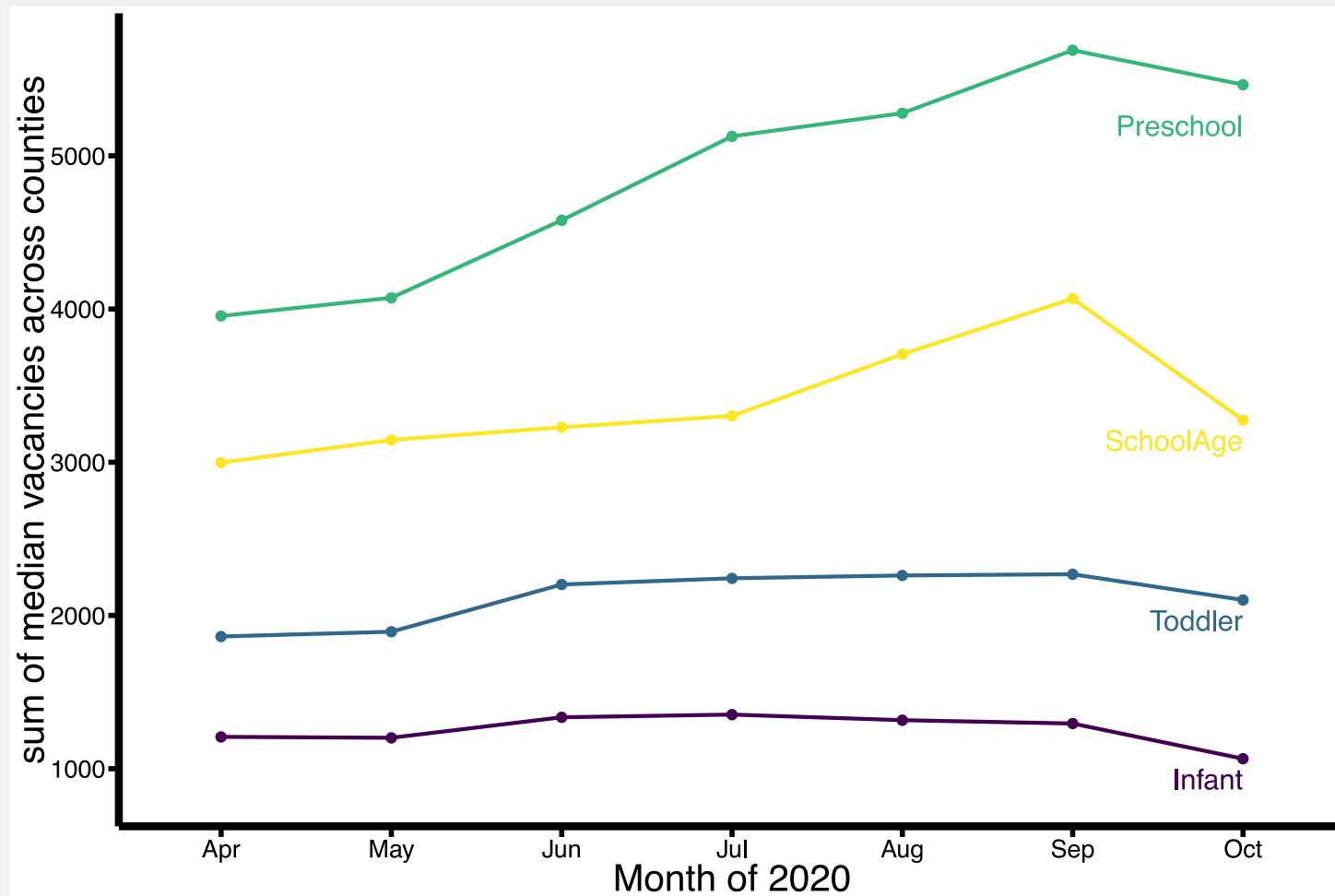




# Vacancies by Age Group

Infant & toddler care was hard to find before the pandemic and has remained hard to find during the pandemic (low vacancies).

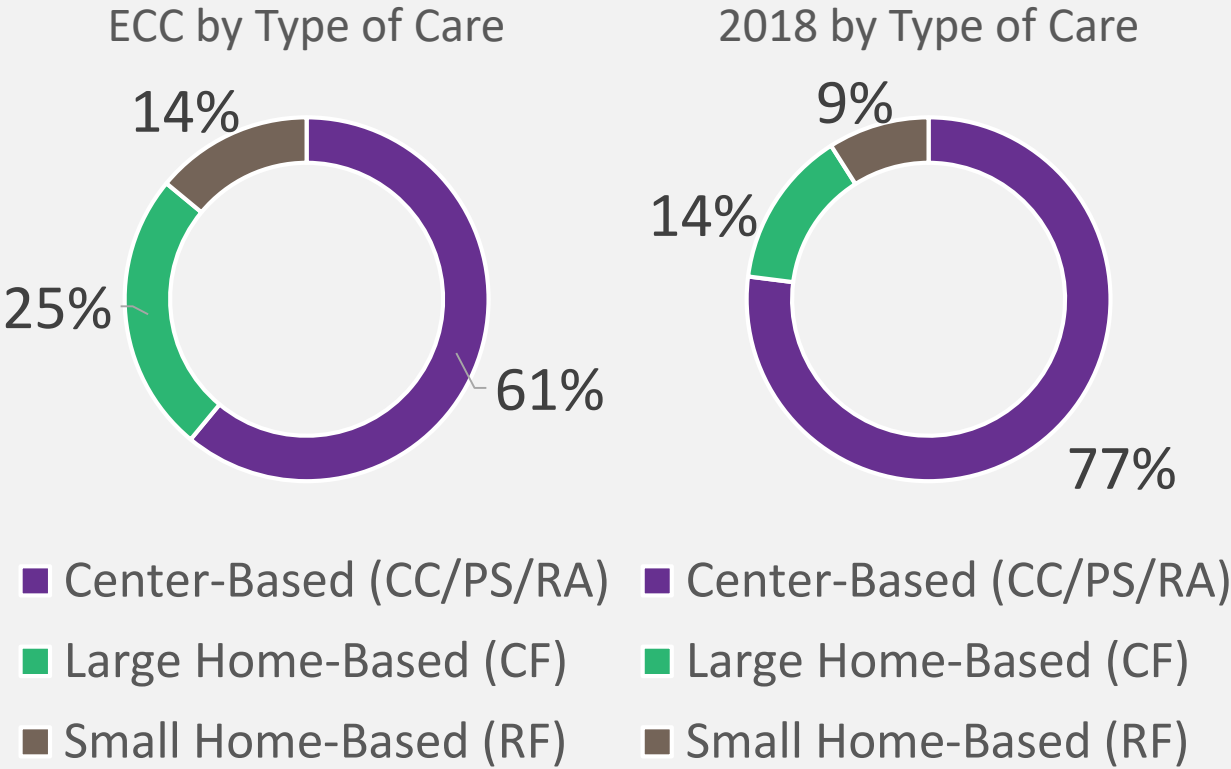
High vacancy rates during the pandemic are recently starting to decline.





# ECC Workforce

The ECC workforce analysis consists of 7,625 individuals who work directly with children were included in the analysis: directors, site directors, head teachers, teachers, aides, assistants, and large and small home-based providers.



Workforce by Race/Ethnicity	ECC Workforce N = 6,050		2018 Workforce N = 17,604	
Overall				
White	4,193	69%	12,253	70%
Person of Color	1,857	31%	5,351	30%
Race/Ethnicity by Category				
American Indian	90	1%	259	1%
Asian	216	4%	774	4%
Black	246	4%	615	3%
Hispanic/Latino/Spanish	1,168	19%	3,346	19%
Native Hawaiian	48	1%	144	1%
White	4,193	69%	12,253	70%
Multiracial	69	1%	137	1%
Other	20	0%	76	0%



# ELD Grants and Federal Relief Funding

- Total Amount of Grant Disbursement for ECC Grants: \$75,664,897 (includes CRF and CARES Act funding) and with more grant funds being disbursed daily.
- Total Number of Providers that received a grant: 3,921 providers
  - Additionally, ODHS disbursed Employment Related Day Care subsidy payments to roughly an additional 1,300 providers



## \$43.5 Million in Additional Coronavirus Relief Funds (CRF)

Allocation	Funds
Comprehensive Supports for School-Age Children	\$7.5 million
Emergency Child Care Grants – Phase 4	\$33.1 million
Transfer to ODHS for Family, Friends and Neighbor Providers	\$3 million
Administrative Costs	\$200,000
<b>Total</b>	<b>\$43.8 million</b>

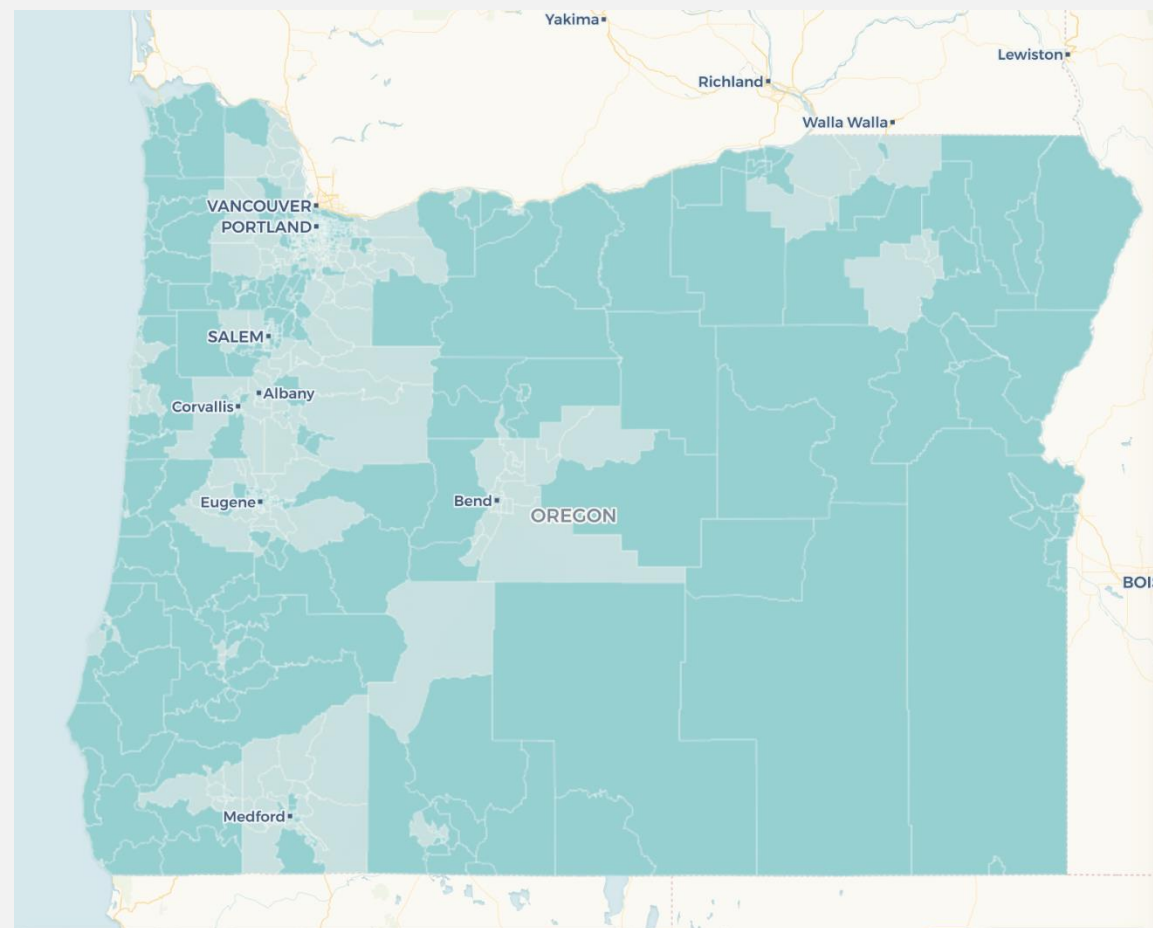




# Opportunity Grants: Focusing Resources to Maintain Supply in Hardest Hit Communities

53% of Oregon's census tracts were Opportunity Zones  
*(in dark teal)*

- Child Care Deserts
- High and Concentrated Poverty
- Residential Racial Isolation and Children of Color
- Rurality



Map available here: <https://oregonearlylearning.com/opportunity-zones-in-oregon/>

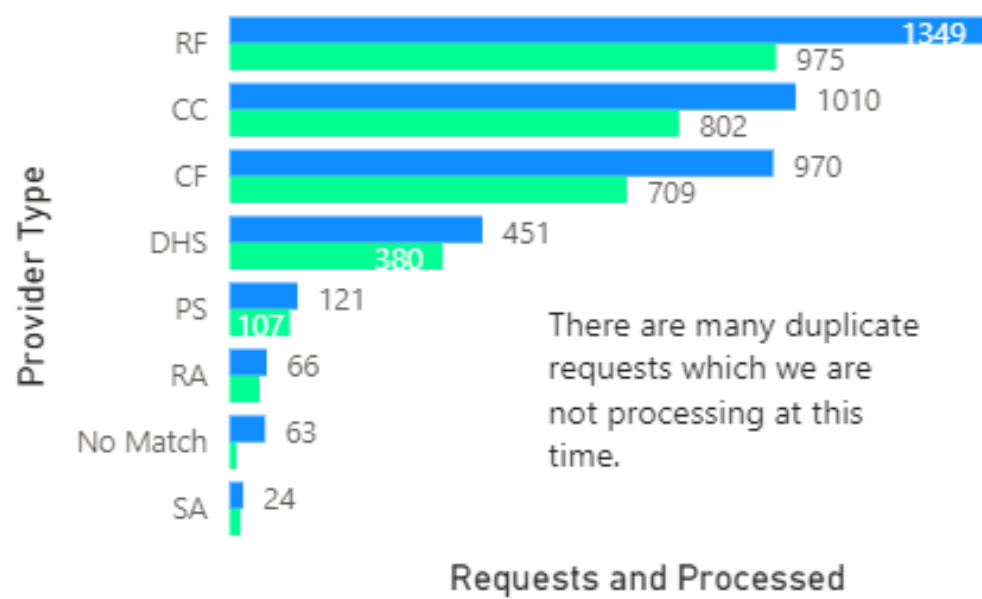


# ECC Supplies

Total processed orders: 3,090

## Requests and Processed Orders by Provider Type

● Requests ● Processed



To ensure that child care providers had access to personal protective equipment (PPE) and cleaning supplies for safe operations, ELD provided free supplies. Care Packages contained masks, gloves, disinfectant wipes, baby wipes, and a thermometer. (Total Cost of Supplies: \$3.09 Million)

# Additional Supports Being Explored

---

- Telehealth consultation for child care providers to support implementation Emergency Child Care Guidelines
- Support for local community based child care supply building initiatives

# ERDC Response to COVID-19

---



## Employment Related Day Care (ERDC) Policy Changes

- \$13.2M in federal CARES Act allocated for these COVID responses:
  - Eliminated copays for all families
  - Increase income eligibility to 85% SMI/250% FPL
  - Expanded absence & closure payment policy
  - New guidance on use of ERDC during distance learning

# ERDC Caseload

ERDC Comparative Caseload

