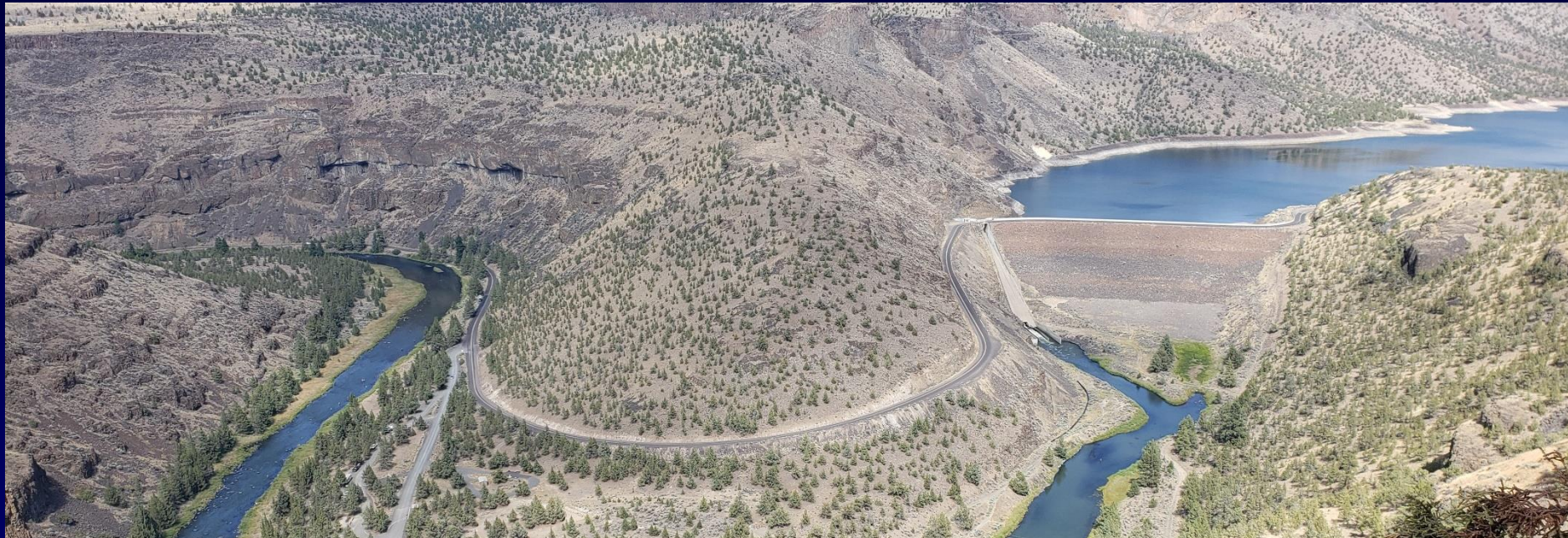


# Bowman Dam

House Water Committee

December 17, 2020

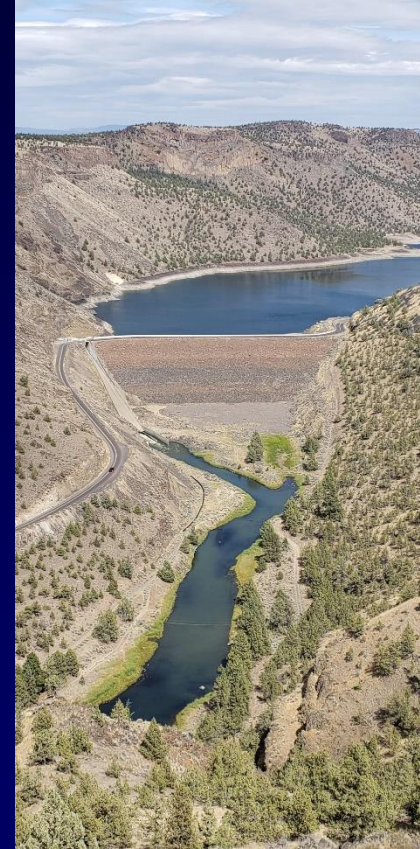


Alan Ritchey- Fish Screens and Passage Program Manager  
Dr. Shaun Clements- Interim Deputy Fish Division Administrator



# Fish Passage Options

- Fish Passage Approval
- Fish Passage Exemption
- Fish Passage Waiver





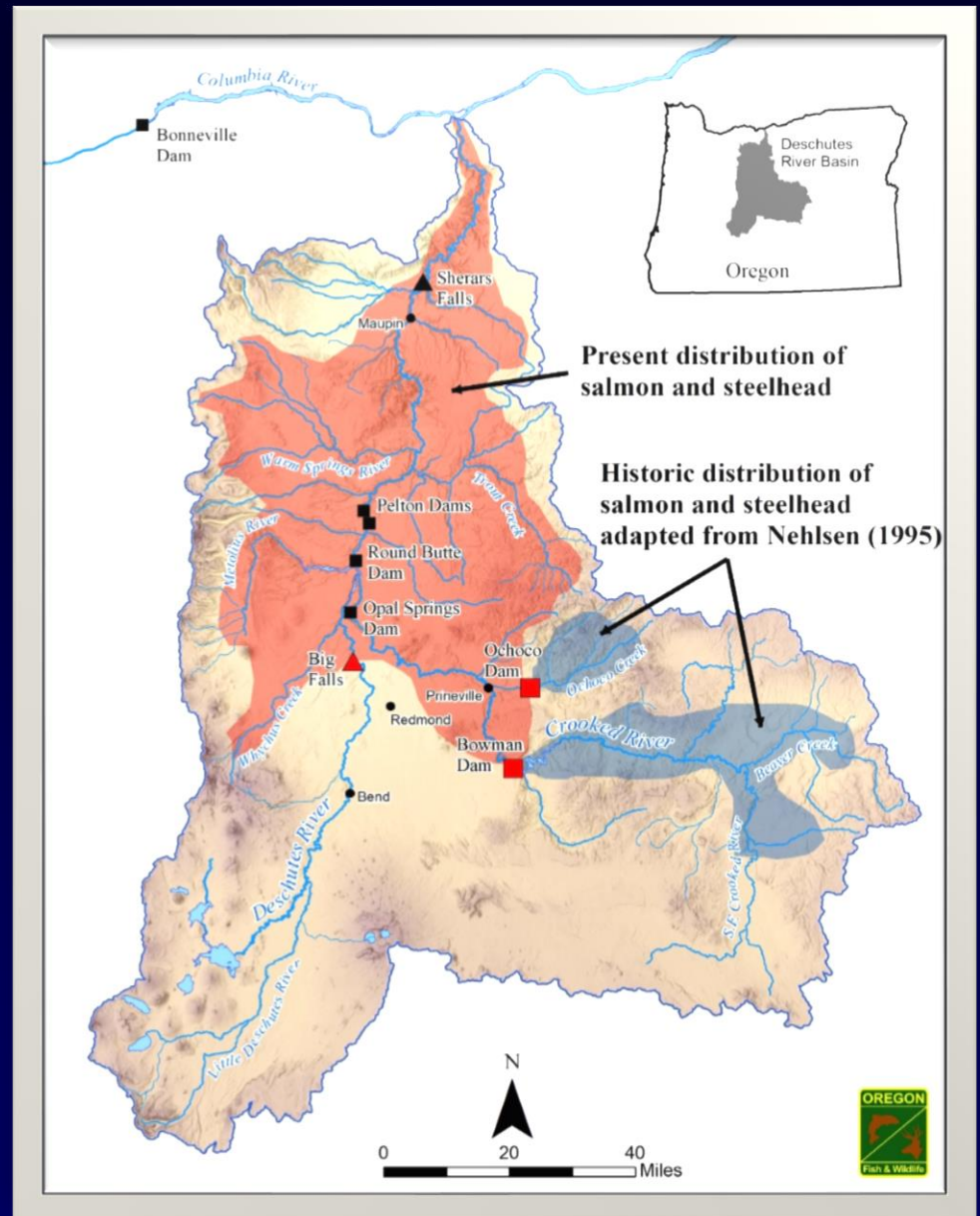
# Fish Passage Waiver

- Net benefit means an increase in habitat quality or quantity that is biologically likely to lead to an increased number of native migratory fish compared to passage at the triggered obstruction.





Opal Springs Dam and Fish  
Passage Facility



# Current Native Migratory Fish

## Approximate Miles of Habitat Above Bowman Dam

■ redband trout	464
■ steelhead trout	63
■ Chinook salmon	57
■ Mountain Whitefish	Unknown
■ Northern pikeminnow	Unknown
■ largescale sucker	Unknown
■ bridgelip sucker	Unknown



# Bowman Dam Waiver

- Large amount of upstream habitat.
- Mitigation shall not include any activity that is a requirement of any other permit.



Deschutes River steelhead streams, summer conditions

# Questions?



Oregon Fish Commission Biologist with  
steelhead trout caught above Bowman Dam  
location in the Paulina Creek weir circa 1952  
(Source ODFW Files)

Alan Ritchey [Alan.D.Ritchey@state.or.us](mailto:Alan.D.Ritchey@state.or.us)

Shaun Clements [Shaun.Clements@state.or.us](mailto:Shaun.Clements@state.or.us)