

A photograph of a wind farm at sunset. The sky is a mix of orange, yellow, and blue, with wispy clouds. Several wind turbines are visible in the distance, silhouetted against the bright horizon. In the foreground, there is a field of green crops, possibly corn.

House Interim Committee on Energy and Environment

PUC Work Plans Executive Order 20-04

Megan Decker
Commission Chair
12/16/20



EO 20-04 – Climate Action



- Sets new GHG emission reduction goals for Oregon.
- Directs state agencies to identify and prioritize actions to meet goals.
- Specific directives to several state agencies, including the PUC.

EO 20-04 PUC Directives



PUC-specific directives cover three themes:

- Reduce utility and state GHG emissions.
- Aid vulnerable populations and impacted communities.
- Assist utilities in identifying and communicating about utility wildfire risks and prevention best practices.

Retains existing Commission decision-making autonomy and legal authority.

PUC Work Plan Overview



Governor Directives

EO 20-04

Themes

GHG Reduction Activities

Vulnerable &
Impacted
Communities

Wildfire
Prevention &
Mitigation

Work Plans

Utility Planning

Utility Services
& Activities

Transportation
Electrification

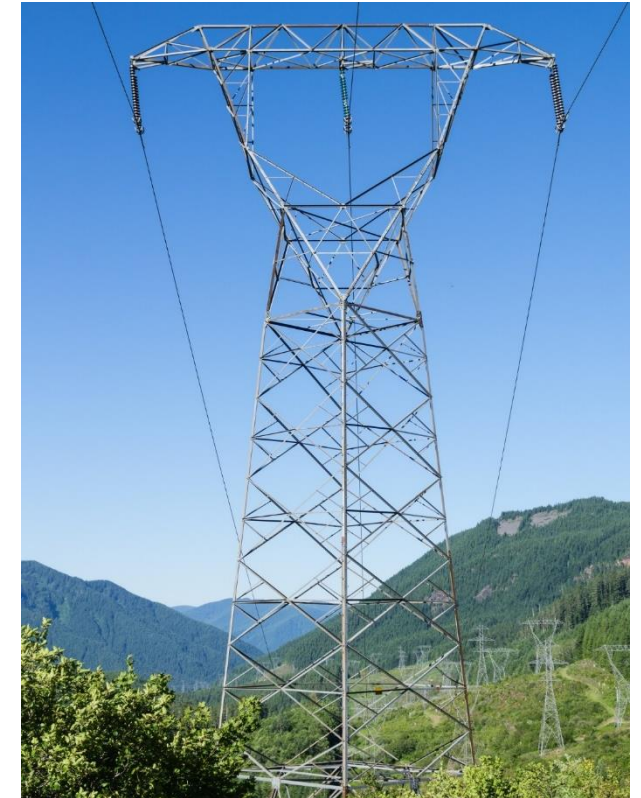
Impacted
Communities

Wildfire
Prevention &
Mitigation

EO Work Plans: Utility Planning



- Advance assessment of GHGs in utility Integrated Resource Plans (IRPs)
- Collaborate with DEQ
 - Cap and Reduce Program
 - Clean Fuels Program
- Fact finding effort regarding potential changes in end use natural gas and customer impacts



EO Work Plans: Utility Services & Activities

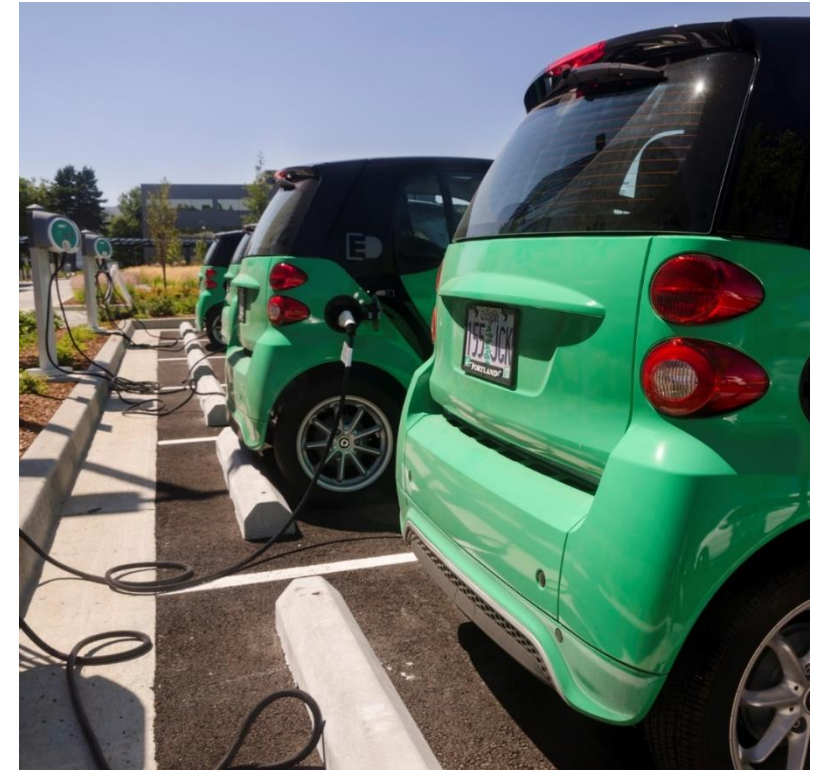


- Prioritize development of community-wide green tariffs
- Implement distribution system planning reforms
- Quantify and incorporate measurable co-benefits from emission reductions into energy efficiency programs

EO Work Plans: Transportation Electrification (TE)



- Work from utility TE pilots toward comprehensive, integrated programs
- Explore new approaches to
 - Quantify value of utility TE actions
 - Encourage smart EV charging through time-of-use rates
 - Prioritize equitable TE infrastructure investments



EO Work Plans: Impacted Communities



- Focus on Diversity, Equity and Inclusion within agency structure/operations, with stakeholders
- Collaboration within state, with stakeholders
 - Environmental Justice Task Force
 - Interagency Workgroup on Climate Change Impacts to Impacted Communities
- Increase regulatory awareness, build new tools on energy burden and other equity issues
 - COVID follow up, PUC Low Income working group
 - With OHCS, public process on energy burden

EO Work Plans: Wildfire Prevention & Mitigation



- Develop and promulgate wildfire mitigation plan rules
 - Investor-owned utility wildfire mitigation plans – robust, risk-based
 - Open, inclusive, accessible process
- Facilitate regular Oregon Wildfire and Electric Collaborative (OWEC) meetings for all electricity providers
 - Discuss technical wildfire mitigation issues and best practices

